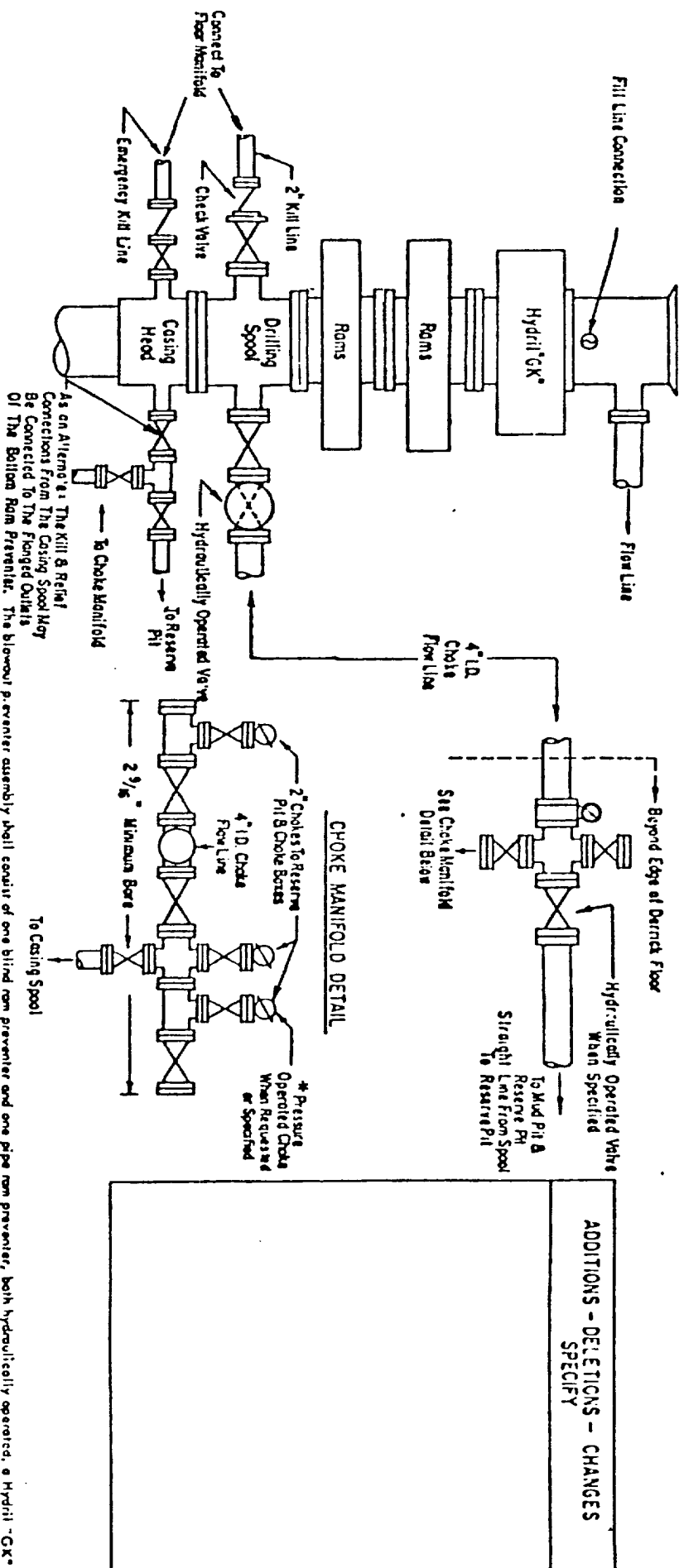




RECEIVED

JUL 21 1983

G.C.D.  
HOBBS OFFICE



### 3000 PSI WORKING PRESSURE BLOWOUT PREVENTER HOOK-UP

a precharge of nitrogen of not less than 750 PSI and connected to as to receive the aforementioned fluid change. With the changing pumps shut down, the pressurized fluid volume stored in the remaining accumulator fluid volume of least \_\_\_\_\_ percent of the original. (3) When required, an additional source of power, remote and equivalent, is to be available to operate the above pumps, or there shall be additional pumps operated by separate power and equal in performance capabilities.

The closing manifold and remote closing manifold shall have a separate control for each pressure-operated device. Controls are to be labeled, with control handles indicating open and closed positions. A pressure reducer and regulator must be provided for operating the Hydril preventer. When required, a second pressure reducer shall be available to limit operating fluid pressures to ram preventers. Gulf Legion No. 38 hydraulic oil, an equivalent or better, is to be used as the fluid to operate the hydraulic equipment.

The choke manifold, choke flow line, and choke lines are to be supported by metal stands and adequately anchored. The choke flow line and choke lines shall be constructed as straight as possible and without sharp bends. Easy and safe access is to be maintained to the choke manifold. All valves are to be selected for operation in the presence of oil, gas, and drilling fluids. The choke flow line valves connected to the drilling spool and all ram type preventers must be equipped with stem extensions, universal joints if needed, and hand wheels which are to extend beyond the edge of the derrick substructure. All other valves are to be equipped with handles.

\* To include derrick floor mounted controls.

RECEIVED

JUL 21 1983

CLERK  
HOBBS OFFICE

**MEXICO OIL CONSERVATION COMMISSION  
WELL LOCATION AND ACREAGE DEDICATION PLAT**

Form C-102  
Supersedes C-128  
Effective 1-1-65

All distances must be from the outer boundaries of the Section

Operator <b>Gulf Oil Corporation</b>			Lease <b>Lea TR State</b>		Well No. <b>1</b>
Unit Letter <b>C</b>	Section <b>18</b>	Township <b>14 South</b>	Range <b>33 East</b>	County <b>Lea</b>	
Actual Footage Location of Well:					
<b>554</b>	feet from the <b>North</b>	line and <b>2022</b>	feet from the <b>West</b>	line	
Ground Level Elev. <b>4265.3</b>	Producing Formation <b>PENN</b>	Pool <b>BAUM Upper Penn</b>	Dedicated Acreage: <b>40</b>		

1. Outline the acreage dedicated to the subject well by colored pencil or hachure marks on the plat below.

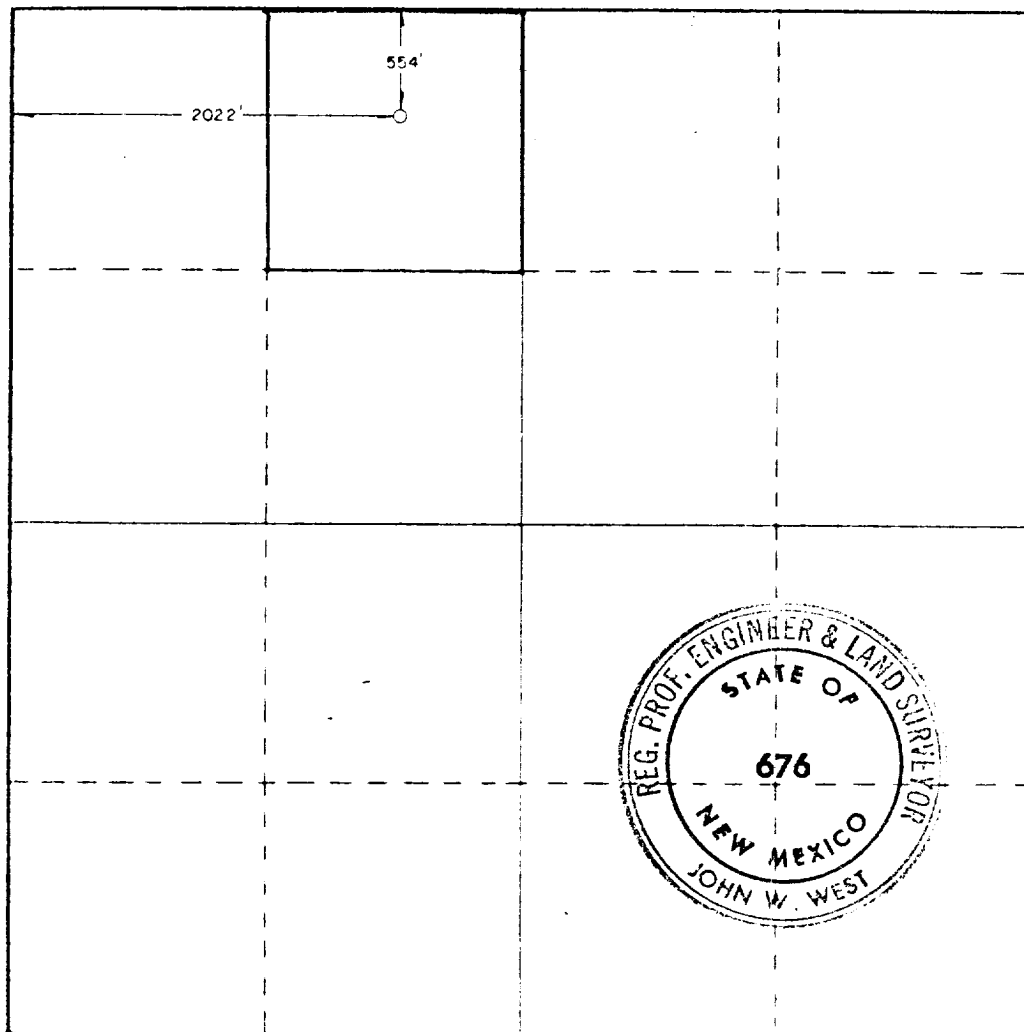
2. If more than one lease is dedicated to the well, outline each and identify the ownership thereof (both as to working interest and royalty).

3. If more than one lease of different ownership is dedicated to the well, have the interests of all owners been consolidated by communitization, unitization, force-pooling, etc?

☐ Yes    ☐ No    If answer is "yes," type of consolidation \_\_\_\_\_

If answer is "no," list the owners and tract descriptions which have actually been consolidated. (Use reverse side of this form if necessary.) \_\_\_\_\_

No allowable will be assigned to the well until all interests have been consolidated (by communitization, unitization, forced-pooling, or otherwise) or until a non-standard unit, eliminating such interests, has been approved by the Commission.



**CERTIFICATION**

I hereby certify that the information contained herein is true and complete to the best of my knowledge and belief.

*R.C. Anderson*

Name  
**R.C. ANDERSON**

Position  
**AREA PROD. MANAGER**

Company  
**Gulf Oil Corporation**

Date  
**7-20-83**

I hereby certify that the well location shown on this plat was plotted from field notes of actual surveys made by me or under my supervision, and that the same is true and correct to the best of my knowledge and belief.

Date Surveyed

**July 18, 1983**

Registered Professional Engineer and/or Land Surveyor

*John W. West*

Certificate No. **JOHN W. WEST, 676**  
**RONALD J. EIDSON, 5239**

330 660 990 1320 1650 1980 2310 2640 2970 3300 3630 3960 4290 4620 4950 5280

**MEXICO OIL CONSERVATION COMMISSION  
WELL LOCATION AND ACREAGE DEDICATION PLAT**

Form C-102  
Supersedes C-128  
Effective 1-1-65

All distances must be from the outer boundaries of the Section

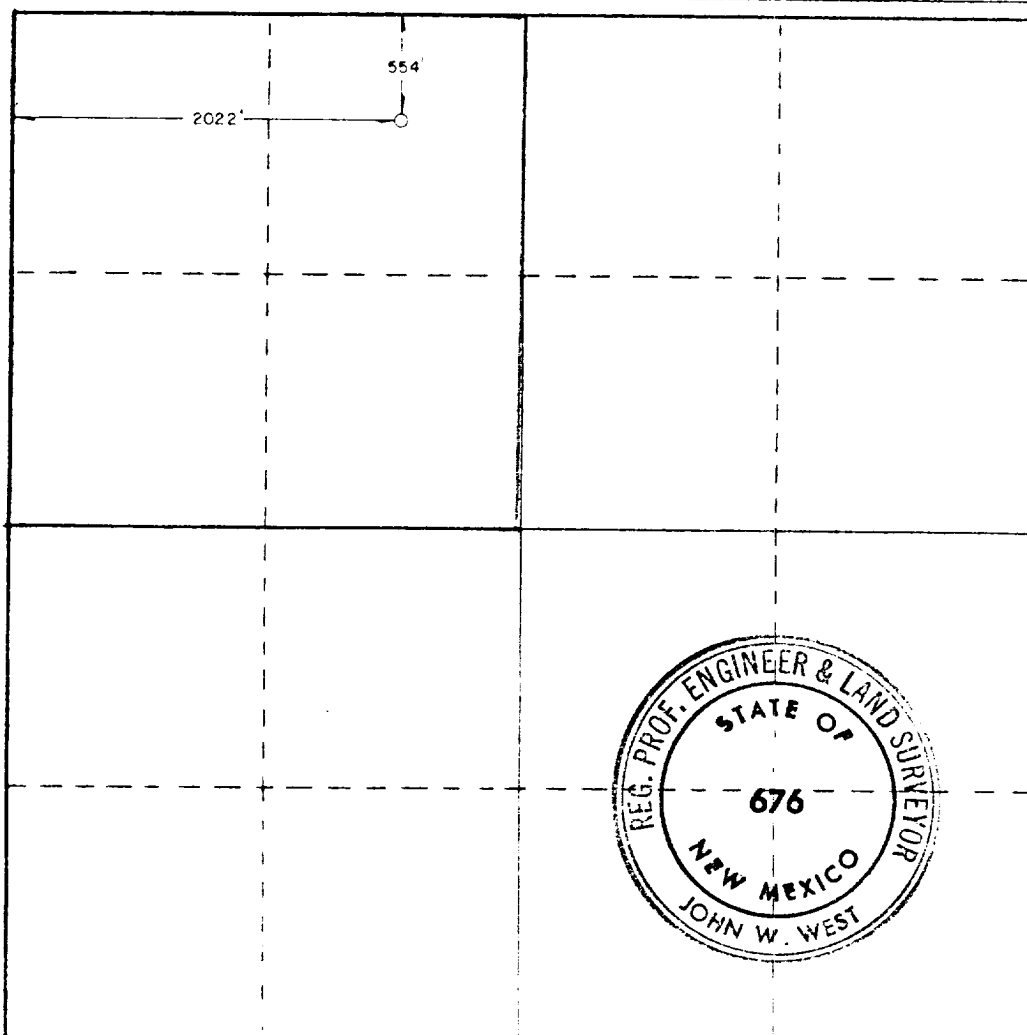
Operator <b>Gulf Oil Corporation</b>			Lease <b>Lea TR State</b>		Well No. <b>1</b>
Tract Letter <b>C</b>	Section <b>18</b>	Township <b>14 South</b>	Range <b>33 East</b>	County <b>Lea</b>	
Actual Footage Location of Well:					
<b>554</b> feet from the <b>North</b> line and		<b>2022</b> feet from the <b>West</b> line			
Ground Level Elev. <b>4265.3</b>	Producing Formation <b>Penn</b>	Pool <b>Baum</b>	Dedicated Acreage: <b>160</b>		

1. Outline the acreage dedicated to the subject well by colored pencil or hatchure marks on the plat below.
2. If more than one lease is dedicated to the well, outline each and identify the ownership thereof (both as to working interest and royalty).
3. If more than one lease of different ownership is dedicated to the well, have the interests of all owners been consolidated by communitization, unitization, force-pooling, etc?

☐ Yes    ☐ No    If answer is "yes," type of consolidation \_\_\_\_\_

If answer is "no," list the owners and tract descriptions which have actually been consolidated. (Use reverse side of this form if necessary.) \_\_\_\_\_

No allowable will be assigned to the well until all interests have been consolidated (by communitization, unitization, forced-pooling, or otherwise) or until a non-standard unit, eliminating such interests, has been approved by the Commission.



**CERTIFICATION**

I hereby certify that the information contained herein is true and complete to the best of my knowledge and belief.

*R.D. Pitre*

Name

**R.D. PITRE**

Position

**AREA ENGINEER**

Company

**GULF OIL CORPORATION**

Date

**7-22-83**

I hereby certify that the well location shown on this plat was plotted from field notes of actual surveys made by me or under my supervision, and that the same is true and correct to the best of my knowledge and belief.

Date Surveyed

**July 18, 1983**

Registered Professional Engineer  
and/or Land Surveyor

*John W. West*

Certificate No. **JOHN W. WEST**

**RINAL E. DASH**

300 600 900 1200 1500 1800 2100 2400 2700 3000 3300 3600 3900 4200 4500 4800 5100 5400 5700 6000

RECEIVED  
JUL 25 1983  
O.C.D.  
HOBB'S OFFICE

