

NEW MEXICO OIL CONSERVATION COMMISSION
WELL LOCATION AND ACREAGE DEDICATION PLAT

Form C-102
 Supersedes C-1
 Effective 1-1-65

All distances must be from the outer boundaries of the Section

Operator Coastal Oil & Gas Corp.			Lease State 32		Well No. 3
Section Letter N	Section 32	Township 13 South	Range 33 East	County Lea	

Actual Footage Location of Well:

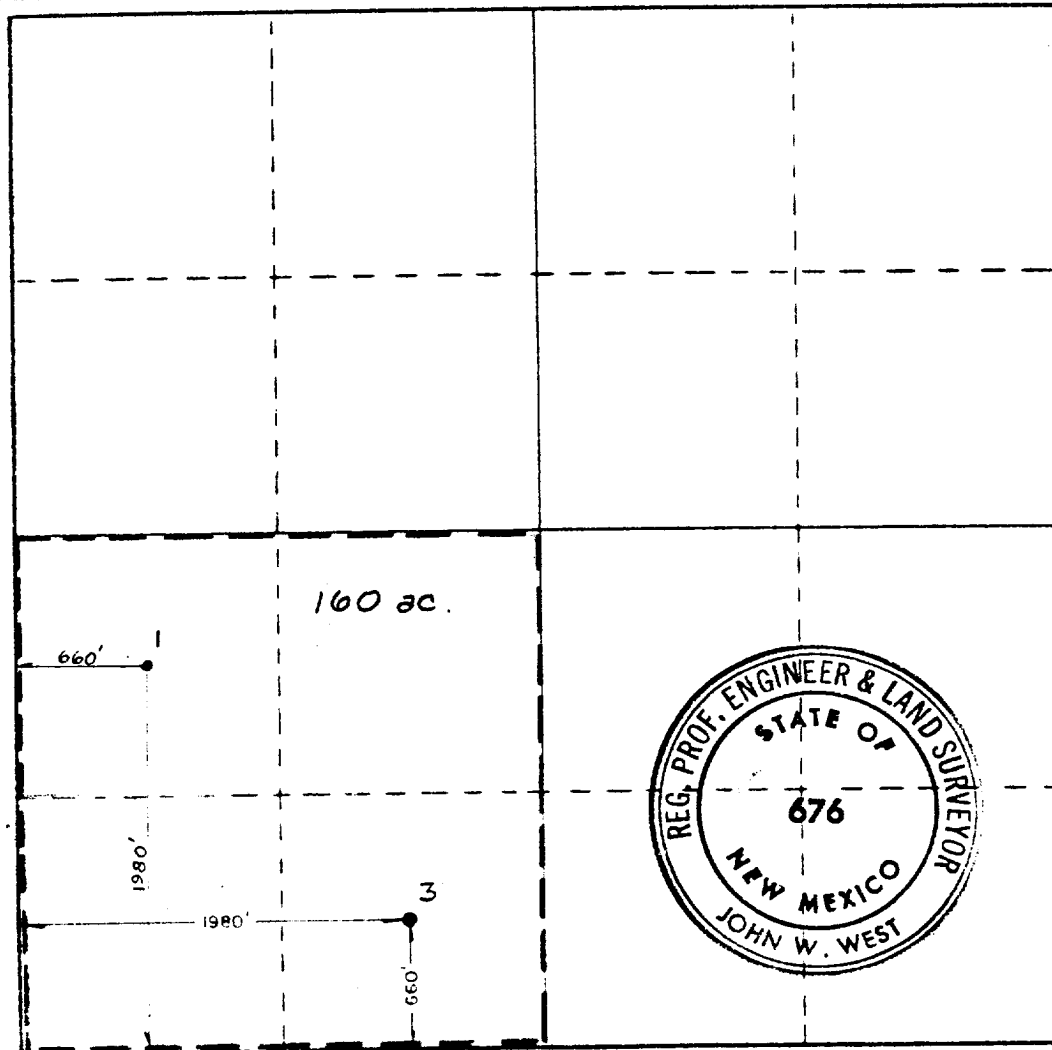
660	feet from the South	line and	1980	feet from the West	line
Ground Level Elev. 4261.5	Producing Formation Upper Penn		Pool Baum (Upper Penn)		Dedicated Acreage: 160 Acres

1. Outline the acreage dedicated to the subject well by colored pencil or hachure marks on the plat below.
2. If more than one lease is dedicated to the well, outline each and identify the ownership thereof (both as to working interest and royalty).
3. If more than one lease of different ownership is dedicated to the well, have the interests of all owners been consolidated by communitization, unitization, force-pooling, etc?

☐ Yes ☒ No If answer is "yes," type of consolidation _____

If answer is "no," list the owners and tract descriptions which have actually been consolidated. (Use reverse side of this form if necessary.) _____

No allowable will be assigned to the well until all interests have been consolidated (by communitization, unitization, forced-pooling, or otherwise) or until a non-standard unit, eliminating such interests, has been approved by the Commission.



CERTIFICATION

I hereby certify that the information contained herein is true and complete to the best of my knowledge and belief.

D. G. Campbell

Name
D. G. Campbell

Position
Sr. Petroleum Engineer

Company
Coastal Oil & Gas Corp.

Date
10-25-83

I hereby certify that the well location shown on this plat was plotted from field notes of actual surveys made by me or under my supervision, and that the same is true and correct to the best of my knowledge and belief.

Date Surveyed
July 19, 1983

Registered Professional Engineer and/or Land Surveyor

John W. West

Certificate No. **JOHN W. WEST, 676**
RONALD J. EIDSON, 3239

360 320 280 240 200 160 120 80 40 0 400 800 1200 1600 2000 2400 2800 3200 3600