

30-025-28294

NO. OF COPIES RECEIVED	
DISTRIBUTION	
SANTA FE	
FILE	
U.S.G.S.	
LAND OFFICE	
OPERATOR	

NEW MEXICO OIL CONSERVATION COMMISSION

Form O-101
Revised 1-1-65

A. Indicate Type of Lease	
STATE <input checked="" type="checkbox"/>	FEE <input type="checkbox"/>
B. State Oil & Gas Lease No.	
B-9505	

APPLICATION FOR PERMIT TO DRILL, DEEPEN, OR PLUG BACK

1a. Type of Work		7. Unit Agreement Name	
b. Type of Well OIL WELL <input checked="" type="checkbox"/> GAS WELL <input type="checkbox"/> OTHER <input type="checkbox"/>		7. Firm or Lease Name New Mexico "AT" State	
2. Name of Operator Texaco Inc.		9. Well No. 11	
3. Address of Operator Box 3109, Midland, Texas 79702		10. Field and Pool, or Wildcat Saunders Permo-Upper Penn	
4. Location of Well UNIT LETTER D LOCATED 990' FEET FROM THE North LINE AND 990 FEET FROM THE West LINE OF SEC. 15 TWP. 14-S RGE. 33-E		12. County Lea	
13. Proposed Depth 10,100'		14. Formation Permo-Upper Penn	
21. Elevations (Show whether DF, RT, etc.) 4215' Gr		23. Rotary or C.T. Rotary	
21A. Kind & Status Plug. Bond -----		22. Approx. Date Work will start Immediately	

23.

PROPOSED CASING AND CEMENT PROGRAM

SIZE OF HOLE	SIZE OF CASING	WEIGHT PER FOOT	SETTING DEPTH	BACKS OF CEMENT	EST. TOP
17 1/2"	13 3/8"	48#, H-40	500'	600	Circulate
12 1/4"	8 5/8"	24#, K-55	4190'	2000	Circulate
		24#, S-80			
		28#, S-80			
7 7/8"	5 1/2"	17#, N-80	10,100'	1850	Circulate
		17#, K-55			

Surface Casing: 600 sxs Class "H" w/2% CaCl₂ (15.6 ppg, 1.18 ft³/sx).
 Intermediate Casing: 1800 sxs HLW w/15# salt, 5# gilsonite & 1/4# flocele/sx (13.0 ppg, 2.00 ft³/sx) followed by 200 sxs Class "H" w/1/4# flocele/sx (15.6 ppg, 1.18 ft³/sx)
 Production Casing: 1st Stage: 700 sxs HLW w/10# gilsonite, 1/4# flocele & 0.6% HALAD-9/sx (12.4 ppg, 1.99 ft³/sx) followed by 200 sxs 50:50 Pozmix Class "H" w/2% gel, 6# gilsonite 1/4# flocele & 0.8% HALAD-9/sx (13.6 ppg, 1.40 ft³/sx). DV Tool at 7000'
 2nd Stage: 750 sxs HLW w/10# gilsonite, 1/4# flocele & 0.2% HR-4/sx (12.4 ppg, 1.99 ft³/sx) followed by 200 sxs 50:50 Pozmix Class "H" w/2% gel, 6# gilsonite, 1/4# flocele & 0.2% HR-4/sx (13.6 ppg, 1.40 ft³/sx).

APPROVAL VALID FOR 180 DAYS
 PERMIT EXPIRES 2/1/84
 UNLESS DRILLING UNDERWAY

IN ABOVE SPACE DESCRIBE PROPOSED PROGRAM: IS PROPOSED PLUG BACK? IF YES, GIVE BLOWOUT PREVENTER PROGRAM, IF ANY.

I hereby certify that the information above is true and complete to the best of my knowledge.

Signed R. S. Lane Asst. Petr. Engr. Manager July 27, 1983

(This space for State Use)

ORIGINAL OF THIS PERMIT TO DRILL, DEEPEN, OR PLUG BACK
 DISTRICT I SUPERVISOR

APPROVED BY

AUG 1 1983

CONDITIONS OF APPROVAL, IF ANY:

NEW MEXICO OIL CONSERVATION COMMISSION
WELL LOCATION AND ACREAGE DEDICATION PLAT

Form C-102
Supersedes C-128
Effective 1-1-65

All distances must be from the outer boundaries of the Section.

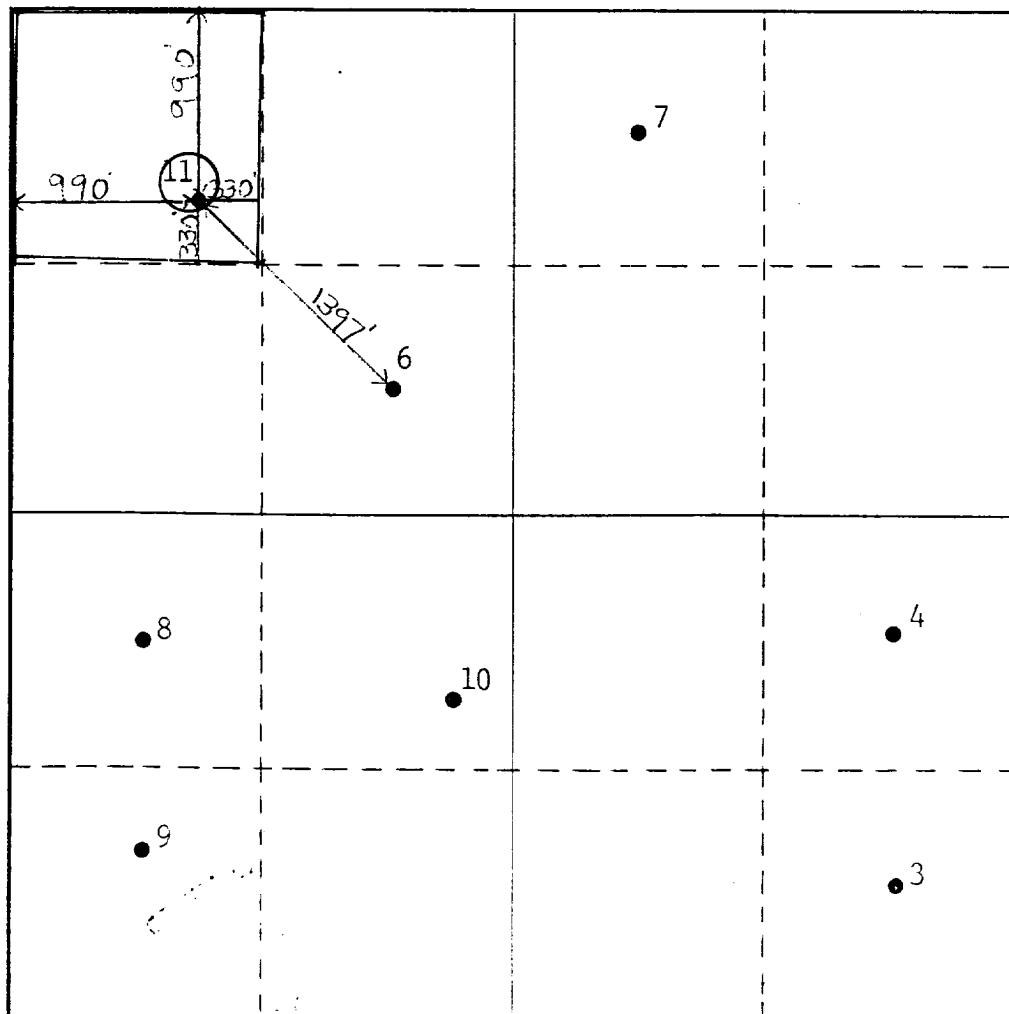
Operator Texaco Inc.			Lease New Mexico "AT" State		Well No. 11
Unit Letter D	Section 15	Township 14 South	Range 33 East	County Lea	
Actual Footage Location of Well: 990 feet from the North line and 990 feet from the West line					
Ground Level Elev. 4215' Gr	Producing Formation Permo-Upper Penn		Pool Saunders Permo-Upper Penn		Dedicated Acreage: 40 Acres

1. Outline the acreage dedicated to the subject well by colored pencil or hachure marks on the plat below.
2. If more than one lease is dedicated to the well, outline each and identify the ownership thereof (both as to working interest and royalty).
3. If more than one lease of different ownership is dedicated to the well, have the interests of all owners been consolidated by communitization, unitization, force-pooling, etc?

☐ Yes ☐ No If answer is "yes," type of consolidation _____

If answer is "no," list the owners and tract descriptions which have actually been consolidated. (Use reverse side of this form if necessary.) _____

No allowable will be assigned to the well until all interests have been consolidated (by communitization, unitization, forced-pooling, or otherwise) or until a non-standard unit, eliminating such interests, has been approved by the Commission.



CERTIFICATION

I hereby certify that the information contained herein is true and complete to the best of my knowledge and belief.

Name **B. L. Eiland**

Position **Division Surveyor**

Company **Texaco Inc.**

Date **July 26, 1983**

I hereby certify that the well location shown on this plat was plotted from field notes of actual surveys made by me or under my supervision, and that the same is true and correct to the best of my knowledge and belief.

July 22, 1983

MEXICO

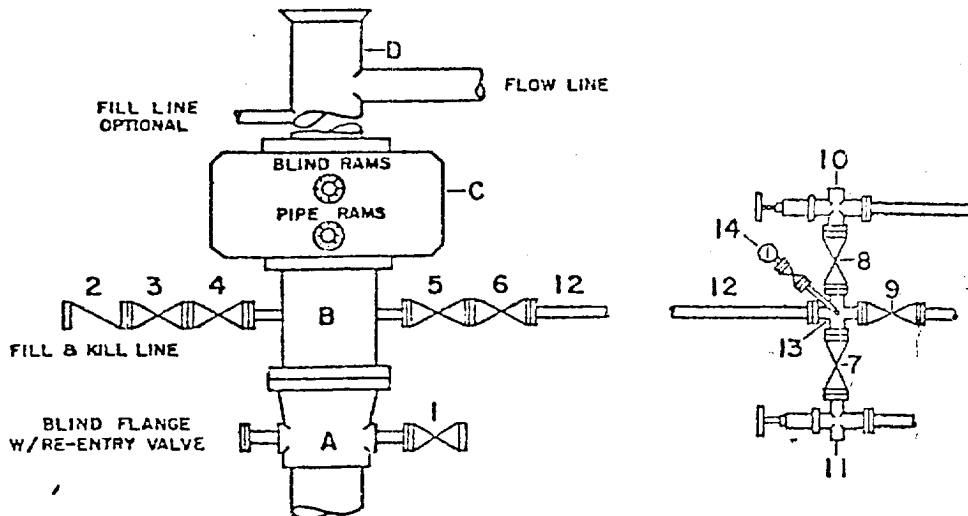
Registered Professional Engineer and Land Surveyor

B. L. Eiland

Certificate No.
4386

DRILLING CONTROL CONDITION II-3000 PSI WP

H₂S TRIM REQUIRED
YES _____ NO _____



DRILLING CONTROL

MATERIAL LIST - CONDITION II

- | | |
|------------|---|
| A | Texaco Wellhead |
| B | 3000# W.P. drilling spool with a 2" minimum flanged outlet for kill-line and 3" minimum flanged outlet for choke line |
| C | 3000# W.P. Dual ram type preventer, hydraulic operated with 1" steel, 3000# W.P. control lines (where sub-structure height is adequate, 2-3000# W.P. single ram type preventers may be utilized.) |
| D | Bell nipple with flowline and fill-up outlets. (Kill line may also be used for fill-up line.) |
| 1,3,4, 7,8 | 2" minimum 3000# W.P. flanged full opening steel gate valve, or Halliburton Lo Torc Plug valve. |
| 2 | 2" minimum 3000# W.P. back pressure valve |
| 5,6,9 | 3" minimum 3000# W.P. flanged full opening steel gate valve, or Halliburton Lo Torc Plug valve. |
| 12 | 3" minimum schedule 80, Grade "B", seamless line pipe |
| 13 | 2" minimum x 3" minimum 3000# W.P. flanged cross |
| 10, 11 | 2" minimum 3000# W.P. adjustable choke bodies |
| 14 | Cameron Mud Gauge or equivalent (location optional in choke line.) |



TEXACO, INC.
PRODUCING DEPARTMENT U S
MIDLAND, TEXAS



SCALE	DATE	EST NO.	DRG NO.
DRAWN BY			
CHECKED BY			
APPROVED BY			

EXHIBIT B