

NO. OF COPIES RECEIVED	
DISTRIBUTION	
SANTA FE	
FILL	
U.S.G.S.	
LAND OFFICE	
OPERATOR	

P. O. BOX 2088

SANTA FE, NEW MEXICO 87501

5A. Indicate Type of Lease STATE <input checked="" type="checkbox"/> REC <input type="checkbox"/>
5. State Oil & Gas Lease No. K-6444
7. Unit Agreement Name
8. Farm or Lease Name Hanladdie "WR" St.
9. Well No. 3
10. Field and Pool, or Wildcat Saunders Permo-Penn
11. Undesignated
12. County Lea

APPLICATION FOR PERMIT TO DRILL, DEEPEN, OR PLUG BACK

a. Type of Work

DRILL ☒DEEPEN ☐PLUG BACK ☐

b. Type of Well

OIL
WELL ☒GAS
WELL ☐

OTHER

SINGLE
ZONE ☐MULTIPLE
ZONE ☐

c. Name of Operator

Yates Petroleum Corporation

d. Address of Operator

207 S. 4th, Artesia, New Mexico 88210

e. Location of Well

UNIT LETTER E LOCATED 2310 FEET FROM THE North LINE

NO 2310 FEET FROM THE West LINE OF SEC. 16 TWP. 14 RGE. 33 NMPM

18. Elevations (show whether DF, RT, etc.) 4221.2 GL	21A. Kind & Status Plug. Bond Blanket	19. Proposed Depth approx. 10,500'	19A. Formation Permo-Penn	20. Rotary or C.T. Rotary
22. Approx. Date Work will start ASAP				

PROPOSED CASING AND CEMENT PROGRAM

SIZE OF HOLE	SIZE OF CASING	WEIGHT PER FOOT	SETTING DEPTH	SACKS OF CEMENT	EST. TOP
17 1/2"	13 3/8"	48# J-55	450'	400 sx	circulated
12 1/4"	8 5/8"	24# J-55	4200'	1300 sx	400'
7 7/8"	5 1/2"	17# N-80-L	TD	450 sx	9200'
		17# N-55-L			
		17# N-55-S			
		17# N-80-L			

We propose to drill a 10,500' well and test the Permo-Penn and intermediate formations. Approximately 450' of surface casing will be set and cement circulated and approximately 4500' of intermediate casing will be set and cement circulated back to about 400'. Production casing will be set to TD and cemented back to approximately 9200'.

MUD PROGRAM: FW gel to 450', Native mud 4500', water & paper to 7500', starch/drisk/KCL to TD.

BOP PROGRAM: BOP's will be installed at the offset and tested daily.

ABOVE SPACE DESCRIBE PROPOSED PROGRAM; IF PROPOSAL IS TO DEEPEN OR PLUG BACK, GIVE DATA ON PRESENT PRODUCTIVE ZONE AND PROPOSED NEW PRODUCTION ZONE. GIVE BLOWOUT PREVENTER PROGRAM, IF ANY.

I hereby certify that the information above is true and complete to the best of my knowledge and belief.

and Gustavo Rodriguez Title Regulatory Agent

Date 8/22/83

(This space for Stamp)
ORIGINAL SIGNED BY JERRY SEXTON
DISTRICT 1 SUPERVISOR

PROVED BY

TITLE

DATE

CONDITIONS OF APPROVAL, IF ANY:

APPROVAL VALID FOR 180 DAYS
PERMIT EXPIRES 3/23/84
UNLESS DRILLING UNDERWAY

AUG 23 1983

NEW MEXICO OIL CONSERVATION COMMISSION
WELL LOCATION AND ACREAGE DEDICATION PLAT

Form C-102
Supersedes C-128
Effective 1-1-65

All distances must be from the outer boundaries of the Section.

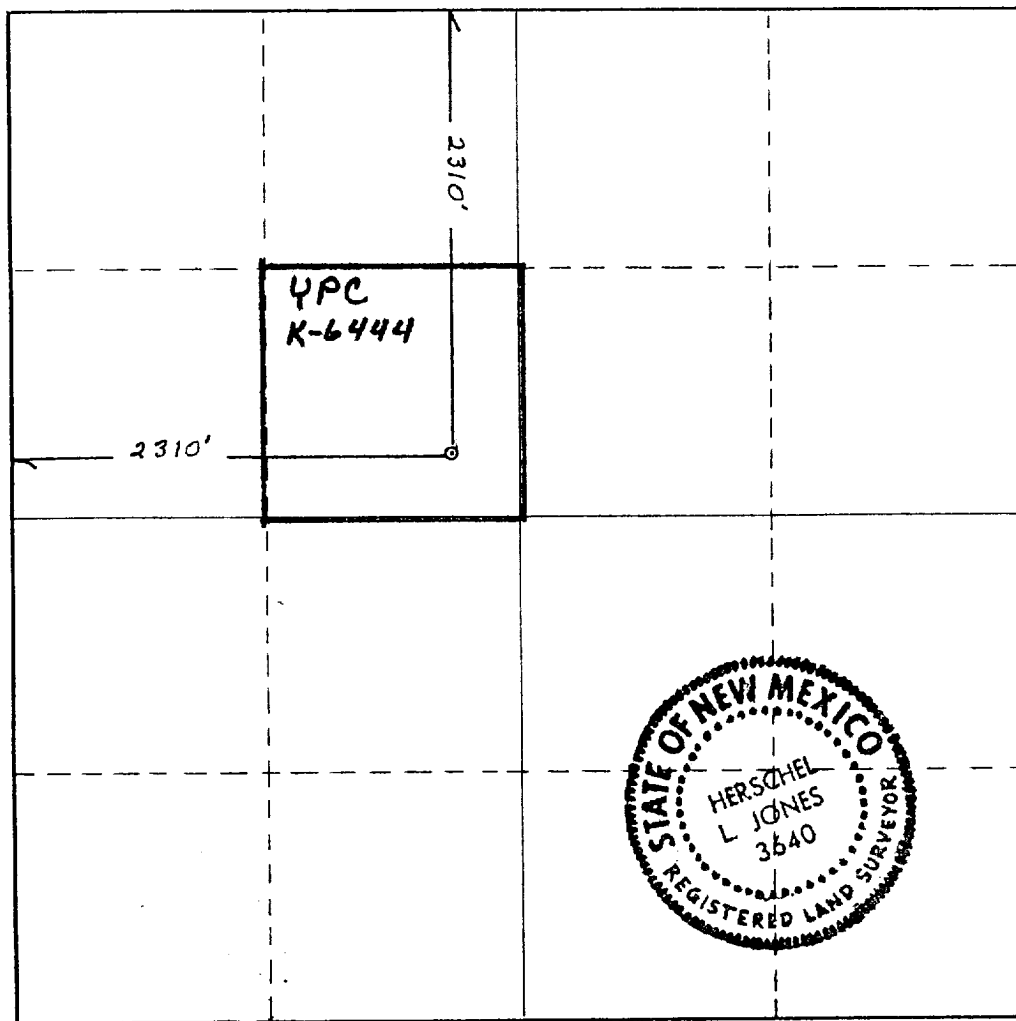
Operator YATES PETROLEUM CORPORATION			Lease Hanladdie "WR" State		Well No. 3
Unit Letter E	Section 16	Township 14 South	Range 33 East	County Lea	
Actual Footage Location of Well:					
2310 feet from the North line and		2310 feet from the West line			
Ground Level Elev. 4221.2	Producing Formation Permo-Penn	Pool Saunders Permo-Penn	Dedicated Acreage: 40 Acres		

1. Outline the acreage dedicated to the subject well by colored pencil or hachure marks on the plat below.
2. If more than one lease is dedicated to the well, outline each and identify the ownership thereof (both as to working interest and royalty).
3. If more than one lease of different ownership is dedicated to the well, have the interests of all owners been consolidated by communitization, unitization, force-pooling, etc?

☐ Yes ☐ No If answer is "yes," type of consolidation _____

If answer is "no," list the owners and tract descriptions which have actually been consolidated. (Use reverse side of this form if necessary.) _____

No allowable will be assigned to the well until all interests have been consolidated (by communitization, unitization, forced-pooling, or otherwise) or until a non-standard unit, eliminating such interests, has been approved by the Commission.



CERTIFICATION

I hereby certify that the information contained herein is true and complete to the best of my knowledge and belief.

Name
Gliserio Rodriguez

Position
Regulatory Agent

Company
Yates Petroleum Corp.

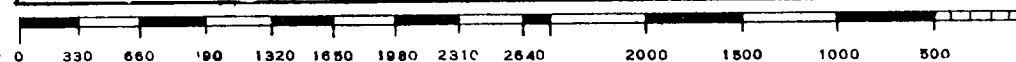
Date
8/22/83

I hereby certify that the well location shown on this plat was plotted from field notes of actual surveys made by me or under my supervision, and that the same is true and correct to the best of my knowledge and belief.

Date Surveyed
August 19, 1983

Registered Professional Engineer and/or Land Surveyor

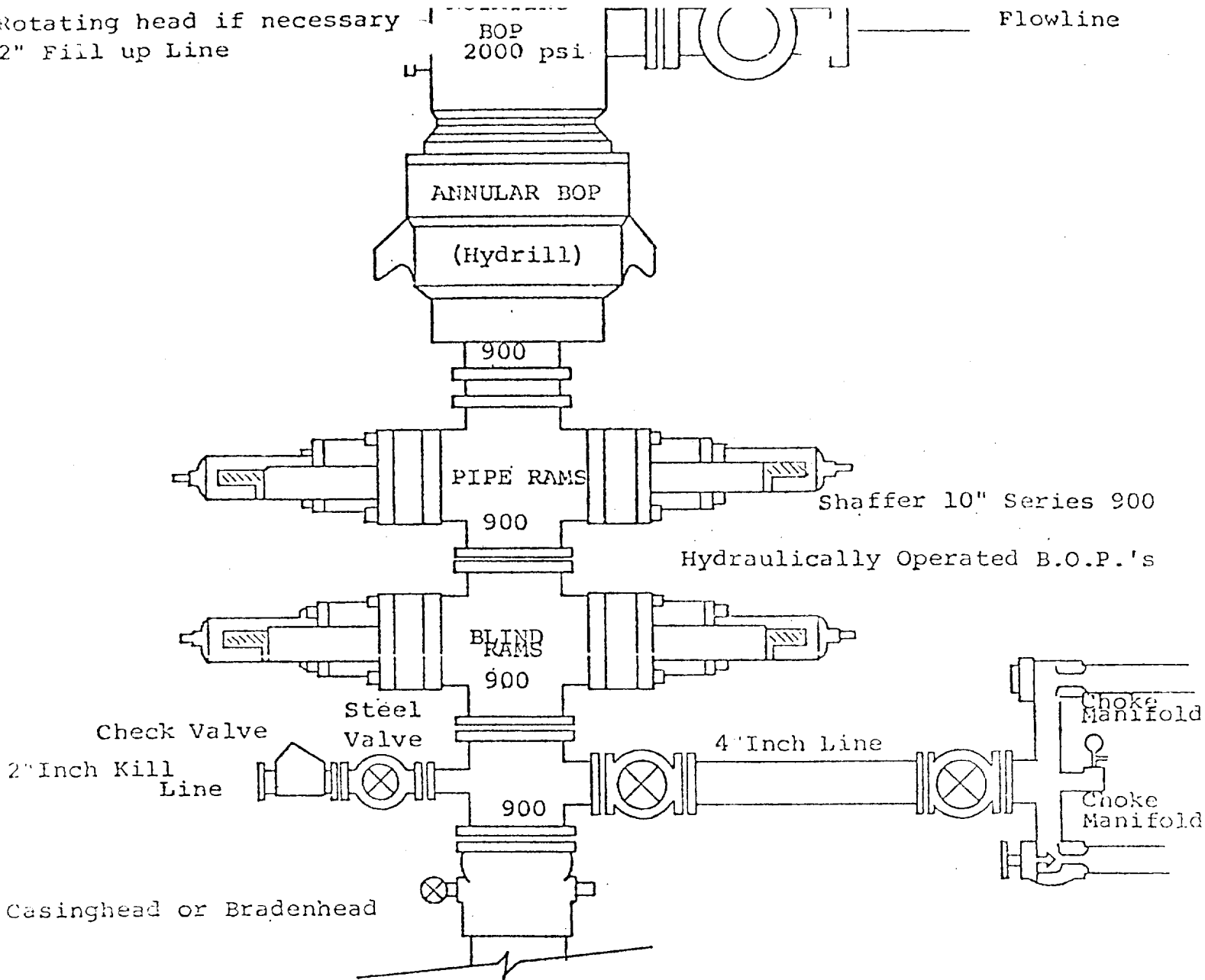
Certificate No.
3640



Rotating head if necessary
2" Fill up Line

BOP
2000 psi

Flowline



THE FOLLOWING CONSTITUTE MINIMUM BLOWOUT PREVENTER REQUIREMENTS

1. All preventers to be hydraulically operated with secondary manual controls installed prior to drilling out from under casing.
2. Choke outlet to be a minimum of 4" diameter.
3. Kill line to be of all steel construction of 2" minimum diameter.
4. All connections from operating manifolds to preventers to be all steel. hole or tube a minimum of one inch in diameter.
5. The available closing pressure shall be at least 15% in excess of that required with sufficient volume to operate the B.O.P.'s.
6. All connections to and from preventer to have a pressure rating equivalent to that of the B.O.P.'s.
7. Inside blowout preventer to be available on rig floor.
8. Operating controls located a safe distance from the rig floor.
9. Hole must be kept filled on trips below intermediate casing.
10. D. P. float must be installed and used below zone of first gas intrusion.