

MEXICO OIL CONSERVATION COMMISSION
WELL LOCATION AND ACREAGE DEDICATION PLAT

Form C-102
 Supersedes C-121
 Effective 1-1-65

All distances must be from the outer boundaries of the Section.

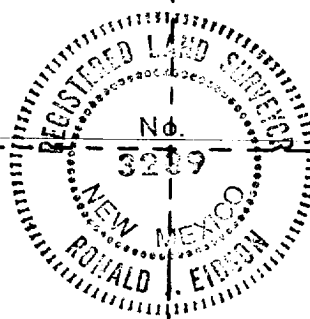
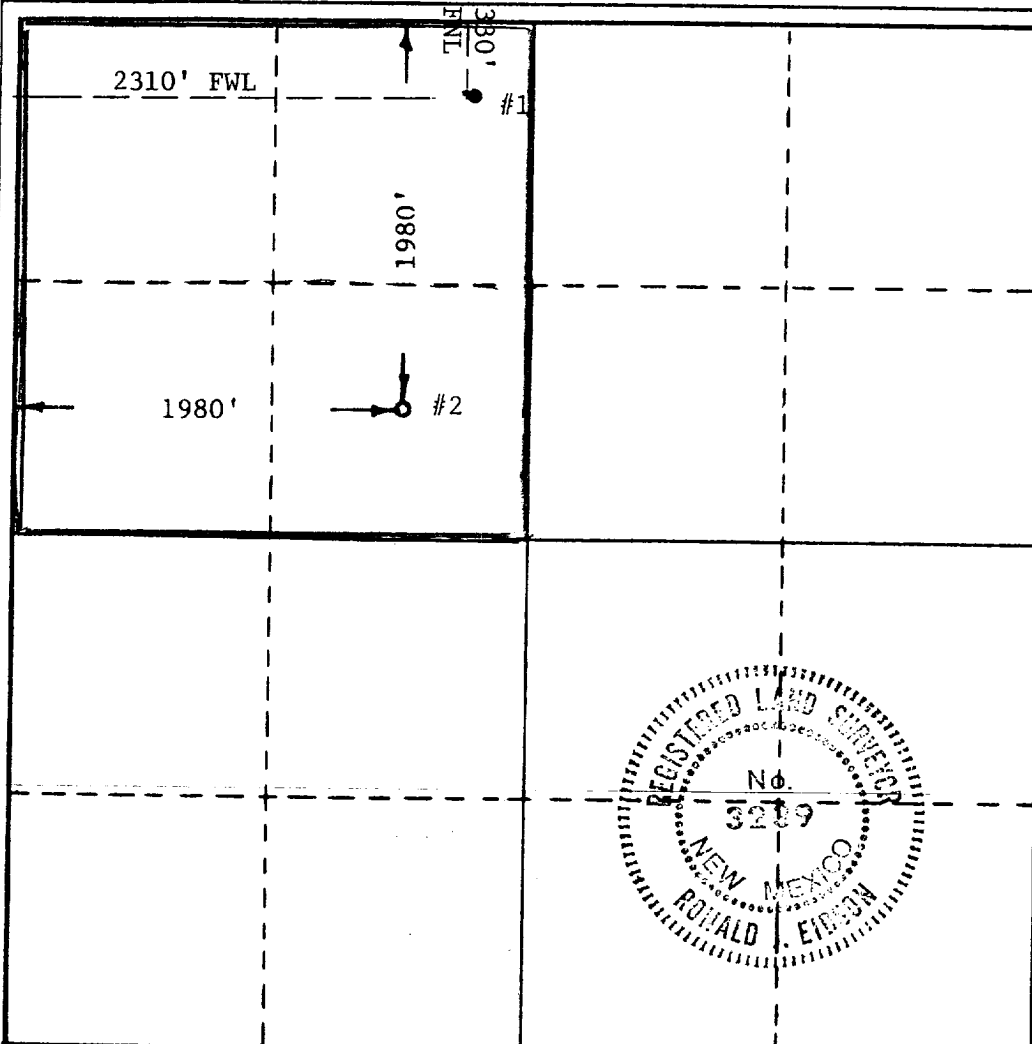
Operator M. W. J. PRODUCING CO.			Lease Baum E		Well No. 2
Unit Letter F	Section 9	Township 14 South	Range 33 East	County Lea	
Actual Footage Location of Well:					
1980 feet from the North line and		1980 feet from the West line			
Ground Level Elev. 4240.4' GL	Producing Formation Baum Upper Penn		Pool Penn	Dedicated Acreage: 160 Acres	

1. Outline the acreage dedicated to the subject well by colored pencil or hachure marks on the plat below.
2. If more than one lease is dedicated to the well, outline each and identify the ownership thereof (both as to working interest and royalty).
3. If more than one lease of different ownership is dedicated to the well, have the interests of all owners been consolidated by communitization, unitization, force-pooling, etc?

☐ Yes ☐ No If answer is "yes," type of consolidation _____

If answer is "no," list the owners and tract descriptions which have actually been consolidated. (Use reverse side of this form if necessary.) _____

No allowable will be assigned to the well until all interests have been consolidated (by communitization, unitization, forced-pooling, or otherwise) or until a non-standard unit, eliminating such interests, has been approved by the Commission.



CERTIFICATION

I hereby certify that the information contained herein is true and complete to the best of my knowledge and belief.

Pat Bishop

Name
Pat Bishop - Agent
 Position
Agent
 Company
MWJ PRODUCING COMPANY
 Date
8/29/83

I hereby certify that the well location shown on this plat was plotted from field notes of actual surveys made by me or under my supervision, and that the same is true and correct to the best of my knowledge and belief.

Date Surveyed
August 30, 1983
 Registered Professional Engineer
 and/or Land Surveyor

Ronald J. Eldson

Certificate No. **JOHN W. WEST 676**
- PATRICK A. ROMERO 6461
Ronald J. Eldson 3231

RECEIVED
SEP 1 1983
G.C.D.
HOBBS OFFICE

SEP 1 1983