

30-025-28385

NO. OF COPIES RECEIVED	
DISTRIBUTION	
SANTA FE	
FILE	
U.S.G.S.	
LAND OFFICE	
OPERATOR	

NEW MEXICO OIL CONSERVATION COMMISSION  
Texaco Lse # 89019

Form C-101  
Revised 1-1-65

5A. Indicate Type of Lease	
STATE <input checked="" type="checkbox"/>	FEE <input type="checkbox"/>
6. State Oil & Gas Lease No. B-9385	
7. Unit Agreement Name	
8. Farm or Lease Name New Mexico "AN" State	
9. Well No. 12	
10. Field and Pool, or Wildcat Saunders Permo Upper Penn	
12. County Lea	
19. Proposed Depth 10,000	19A. Formation Permo Upper Penn
20. Rotary or C.T. Rotary	
21. Elevations (Show whether DF, RT, etc.) 4208' Gr	22. Approx. Date Work will start Immediately

1a. Type of Work	
b. Type of Well DRILL <input checked="" type="checkbox"/> DEEPEN <input type="checkbox"/> PLUG BACK <input type="checkbox"/> OIL WELL <input checked="" type="checkbox"/> GAS WELL <input type="checkbox"/> OTHER <input type="checkbox"/> SINGLE ZONE <input checked="" type="checkbox"/> MULTIPLE ZONE <input type="checkbox"/>	
2. Name of Operator Texaco Inc.	
3. Address of Operator Box 3109, Midland, Texas	
4. Location of Well UNIT LETTER G LOCATED 1980 FEET FROM THE North LINE AND 2303 FEET FROM THE East LINE OF SEC. 22 TWP. 14-S RGE. 33-E NMPM	
21. Elevations (Show whether DF, RT, etc.) 4208' Gr	
21A. Kind & Status Plug. Bond -----	
21B. Drilling Contractor -----	

PROPOSED CASING AND CEMENT PROGRAM

SIZE OF HOLE	SIZE OF CASING	WEIGHT PER FOOT	SETTING DEPTH	SACKS OF CEMENT	EST. TOP
17 1/2"	13 3/8"	48#, H-40	525'	650	Circulate
12 1/4"	8 5/8"	24#, K-55	4200'	2100	Circulate
		24#, S-80			
		28#, S-80			
7 7/8"	5 1/2"	17#, N-80	10000"	2150	Circulate
		17#, K-55			

1. Surface Casing: 650 sxs Class "H" w/2% CaCl<sub>2</sub> (15.6 ppg, 1.18 ft<sup>3</sup>/sx).
2. Intermediate Casing: 1800 sxs HLW w/15# salt & 1/4# flocele/sx (13.6 ppg, 1.71 ft<sup>3</sup>/sx) followed by 300 sxs Class "H" w/1/4# flocele/sx (15.6 ppg, 1.18 ft<sup>3</sup>/sx).
3. Production Casing: 1st Stage; 750 sxs HLW w/5# gilsonite, 1/4# flocele & 0.6% HALAD-9/sx (12.8 ppg, 1.73 ft<sup>3</sup>/sx) followed by 200 sxs 50-50 Pozmix Class "H" w/5# gilsonite, 1/4# flocele & .8% HALAD-9/sx (13.6 ppg, 1.40 ft<sup>3</sup>/sx). DV Tool at 7000'. 2nd Stage; 1200 sxs HLW w/5# gilsonite & 1/4# flocele/sx (12.8 ppg, 1.73 ft<sup>3</sup>/sx).

APPROVAL VALID FOR 180 DAYS  
PERMIT EXPIRES 3/12/84  
UNLESS DRILLING UNDERWAY

IN ABOVE SPACE DESCRIBE PROPOSED PROGRAM; IF PROPOSAL IS TO DRILL IN A NEW PRODUCTIVE ZONE AND PROPOSED NEW PRODUCTIVE ZONE, GIVE BLOWOUT PREVENTER PROGRAM, IF ANY.

I hereby certify that the information above is true and accurate to the best of my knowledge and belief.

Signed R. S. Lane Asst. Petr. Engr. Manager September 9, 1983

ORIGINAL SIGNED BY JERRY SEXTON  
DISTRICT I SUPERVISOR

APPROVED BY \_\_\_\_\_ DATE \_\_\_\_\_  
CONDITIONS OF APPROVAL, IF ANY:

SEP 12 1983

RECEIVED  
SEP 12 1983  
O.C.D.  
HOBBS OFFICE

NE MEXICO OIL CONSERVATION COMMISSIC  
WELL LOCATION AND ACREAGE DEDICATION PLAT

Form C-102  
Supersedes C-128  
Effective 1-1-65

All distances must be from the outer boundaries of the Section.

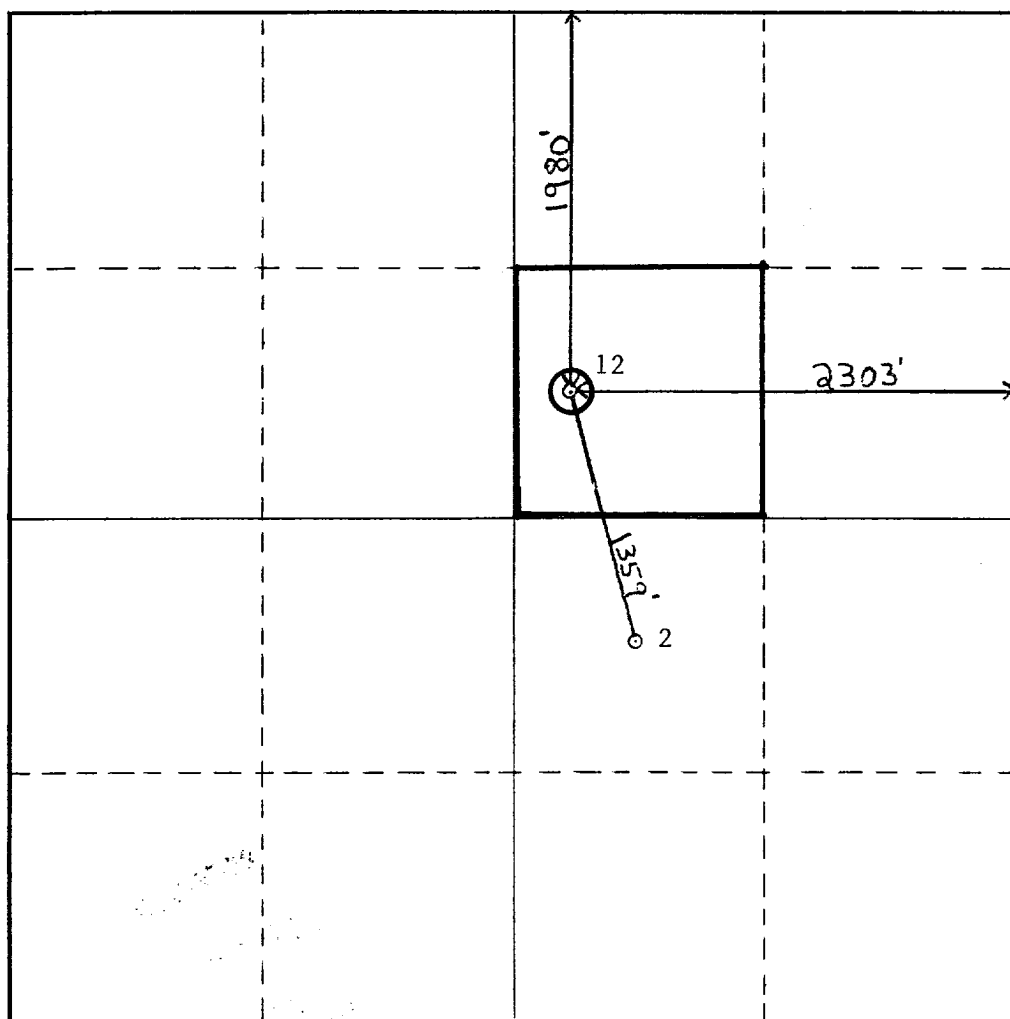
Operator <b>Texaco Inc.</b>			Lease <b>New Mexico "AN" State</b>		Well No. <b>12</b>
Unit Letter <b>G</b>	Section <b>22</b>	Township <b>14-S</b>	Range <b>33-E</b>	County <b>Lea</b>	
Actual Footage Location of Well: <b>1980</b> feet from the <b>North</b> line and <b>2303</b> feet from the <b>East</b> line					
Ground Level Elev. <b>4208'GR</b>	Producing Formation <b>Permo Upper Penn</b>		Pool <b>Saunders Permo Upper Penn</b>		Dedicated Acreage: <b>40</b> Acres

1. Outline the acreage dedicated to the subject well by colored pencil or hachure marks on the plat below.
2. If more than one lease is dedicated to the well, outline each and identify the ownership thereof (both as to working interest and royalty).
3. If more than one lease of different ownership is dedicated to the well, have the interests of all owners been consolidated by communitization, unitization, force-pooling, etc?

☐ Yes ☐ No If answer is "yes," type of consolidation \_\_\_\_\_

If answer is "no," list the owners and tract descriptions which have actually been consolidated. (Use reverse side of this form if necessary.) \_\_\_\_\_

No allowable will be assigned to the well until all interests have been consolidated (by communitization, unitization, forced-pooling, or otherwise) or until a non-standard unit, eliminating such interests, has been approved by the Commission.



**CERTIFICATION**

I hereby certify that the information contained herein is true and complete to the best of my knowledge and belief.

*B. L. Eiland*

Name  
**B. L. Eiland**

Position  
**Division Surveyor**

Company  
**Texaco Inc.**

Date  
**September 9, 1983**

I hereby certify that the well location shown on this plat was plotted from field notes of actual surveys made by me or under my supervision, and that the same is true and correct to the best of my knowledge and belief.

Date Surveyed  
**September 1, 1983**

Registered Professional Engineer and/or Land Surveyor

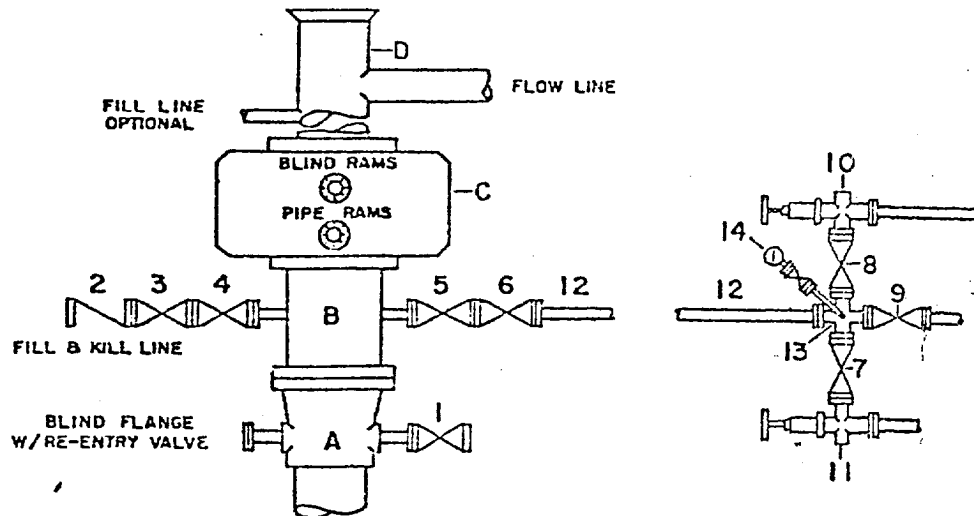
*B. L. Eiland*  
**B. L. Eiland**

Certificate No.  
**4386**

RECEIVED  
SEP 12 1983  
O.C.D.  
HOBBS OFFICE

# DRILLING CONTROL CONDITION II-3000 PSI WP

H<sub>2</sub>S TRIM REQUIRED  
YES \_\_\_\_\_ NO \_\_\_\_\_



## DRILLING CONTROL

### MATERIAL LIST - CONDITION II

- A Texaco Wellhead
- B 3000# W.P. drilling spool with a 2" minimum flanged outlet for kill-line and 3" minimum flanged outlet for choke line
- C 3000# W.P. Dual ram type preventer, hydraulic operated with 1" steel, 3000# W.P. control lines (where sub-structure height is adequate, 2-3000# W.P. single ram type preventers may be utilized.)
- D Bell nipple with flowline and fill-up outlets. (Kill line may also be used for fill-up line.)
- 1,3,4, 7,8 2" minimum 3000# W.P. flanged full opening steel gate valve, or Halliburton Lo Torc Plug valve.
- 2 2" minimum 3000# W.P. back pressure valve
- 5,6,9 3" minimum 3000# W.P. flanged full opening steel gate valve, or Halliburton Lo Torc Plug valve.
- 12 3" minimum schedule 80, Grade "B", seamless line pipe
- 13 2" minimum x 3" minimum 3000# W.P. flanged cross
- 10, 11 2" minimum 3000# W.P. adjustable choke bodies
- 14 Cameron Mud Gauge or equivalent (location optional in choke line.)



TEXACO, INC.  
PRODUCING DEPARTMENT U.S.  
MIDLAND, TEXAS



SCALE	DATE	EST. NO.	DRG. NO.
DRAWN BY			
CHECKED BY			
APPROVED BY			

EXHIBIT B

473

RECEIVED

SEP 12 1983

O.C.D.  
HOBBS OFFICE