

30-025-28386

NO. OF COPIES RECEIVED	
DISTRIBUTION	
SANTA FE	
FILE	
U.S.G.S.	
LAND OFFICE	
OPERATOR	

NEW MEXICO OIL CONSERVATION COMMISSION

Texaco Lse # 89126

Form O-101
Revised 1-1-65

1A. Indicate Type of Lease	
STATE <input checked="" type="checkbox"/>	FEE <input type="checkbox"/>
2. State Oil & Gas Lease No.	
B-9505	
3. Unit Agreement Name	
4. Firm or Lease Name	
New Mexico "AT" State	
5. Well No.	
12	
10. Field and Pool, or Wildcat	
Saunders Permo Upper Penn	
12. County	
Lea	
13. Formation	14. Formation
10,000	Permo Upper Penn
20. Rotary or C.T.	
Rotary	
21. Elevations (Show whether DE, KI, etc.)	22. Approx. Date Work will start
4200' Gr	Immediately

APPLICATION FOR PERMIT TO DRILL, DEEPEN, OR PLUG BACK

1a. Type of Work		2. Name of Operator		3. Address of Operator		4. Location of Well		5. Unit Letter		6. Located		7. Year		8. Direction		9. Line		10. Section		11. Township		12. Range		13. Meridian		14. County		15. State		16. Formation		17. Rotary or C.T.		18. Approx. Date Work will start	
b. Type of Well		Texaco Inc.		Box 3109, Midland, Texas 79702		1650		G		1980				North				15		14-S		33-E													
DRILL <input checked="" type="checkbox"/>																																			
OIL WELL <input checked="" type="checkbox"/>																																			
GAS WELL <input type="checkbox"/>																																			
OTHER <input type="checkbox"/>																																			

23.

PROPOSED CASING AND CEMENT PROGRAM

SIZE OF HOLE	SIZE OF CASING	WEIGHT PER FOOT	SETTING DEPTH	SACKS OF CEMENT	EST. TOP
17 1/2"	13 3/8"	48#, H-40	525'	650	Circulate
12 1/4"	8 5/8"	24#, K-55	4200'	2100	Circulate
		24#, S-80			
		28#, S-80			
7 7/8"	5 1/2"	17#, N-80	10000'	2150	Circulate
		17#, K-55			

1. Surface Casing: 650 sxs Class "H" w/2% CaCl₂ (15.6 ppg, 1.18 ft³/sx).
2. Intermediate Casing: 1800 sxs HLW w/15# salt & 1/4# flocele/sx (13.6 ppg, 1.71 ft³/sx) followed by 300 sxs Class "H" w/1/4# flocele/sx (15.6 ppg, 1.18 ft³/sx).
3. Production Casing: 1st Stage: 750 sxs HLW w/5# gilsonite, 1/4# flocele & 0.6% HALAD-9/sx (12.8 ppg, 1.73 ft³/sx) followed by 200 sxs 50-50 Pozmix Class "H" w/5# gilsonite, 1/4# flocele & .8% HALAD-9/sx (13.6 ppg, 1.40 ft³/sx). DV Tool at 7000'
2nd Stage; 1200 sxs HLW w/5# gilsonite & 1/4# flocele/sx (12.8 ppg, 1.73 ft³/sx).

APPROVAL VALID FOR 180 DAYS
 PERMIT EXPIRES 5/12/84
 UNLESS DRILLING UNDERWAY

IN ABOVE SPACE DESCRIBE PROPOSED PROGRAM IN DETAIL, INCLUDING ZONE, GIVE BLOWOUT PREVENTER PROGRAM, IF ANY.

I hereby certify that the information above is true and correct.

Signed

R. S. Lane

Asst. Petr. Engr. Manager

September 9, 1983

ORIGINAL SIGNED BY JERRY SEXTON
 DISTRICT 1 SUPERVISOR

APPROVED BY

CONDITIONS OF APPROVAL, IF ANY:

SEP 12 1983

**NEW MEXICO OIL CONSERVATION COMMISSION
WELL LOCATION AND ACREAGE DEDICATION PLAT**

Form C-102
Supersedes C-128
Effective 1-1-65

All distances must be from the outer boundaries of the Section.

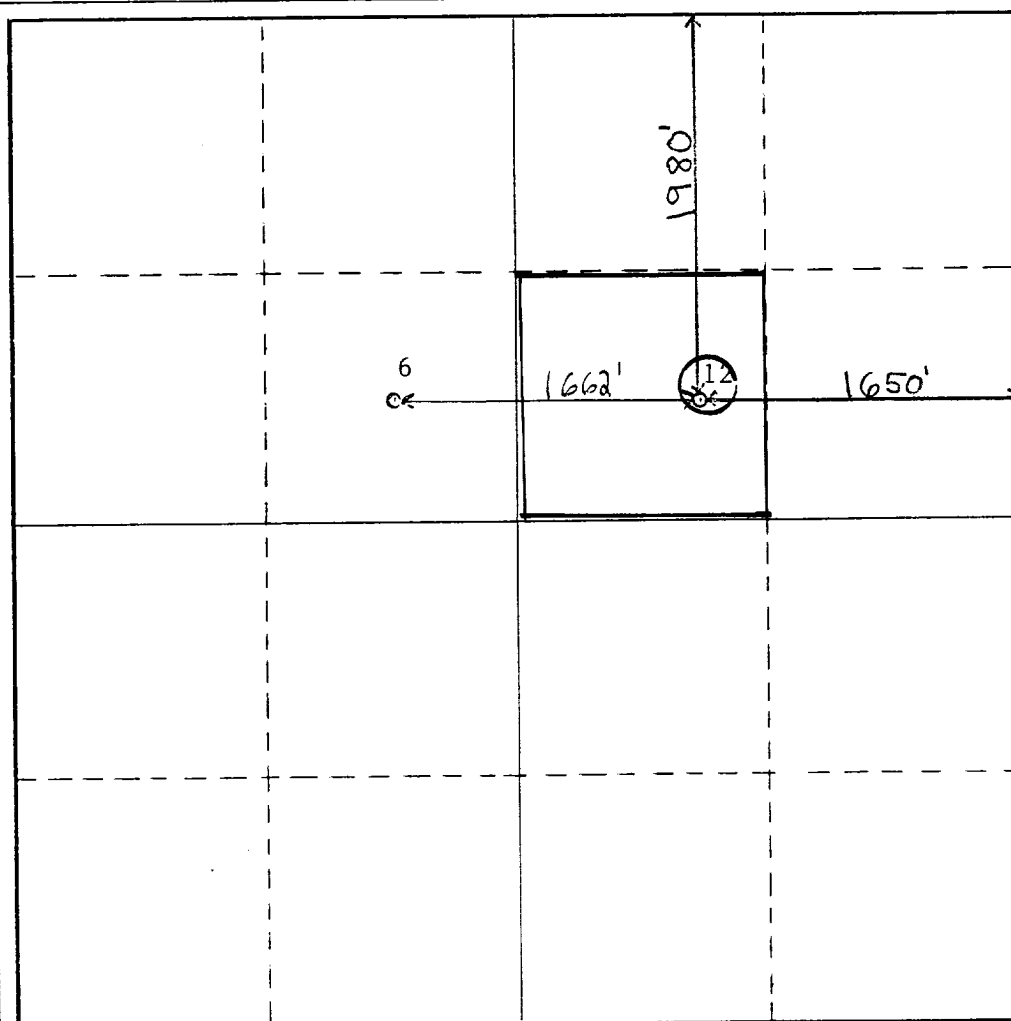
Operator Texaco Inc.			Lease New Mexico "AT" State		Well No. 12
Unit Letter G	Section 15	Township 14-S	Range 33-E	County Lea	
Actual Footage Location of Well: <div style="display: flex; justify-content: space-between;"> 1980 feet from the North line and 1650 feet from the East line </div>					
Ground Level Elev. 4200' GR	Producing Formation Permo-Upper Penn		Pool Saunders Permo-Upper Penn		Dedicated Acreage: 40 Acres

1. Outline the acreage dedicated to the subject well by colored pencil or hachure marks on the plat below.
2. If more than one lease is dedicated to the well, outline each and identify the ownership thereof (both as to working interest and royalty).
3. If more than one lease of different ownership is dedicated to the well, have the interests of all owners been consolidated by communitization, unitization, force-pooling, etc?

☐ Yes ☐ No If answer is "yes," type of consolidation _____

If answer is "no," list the owners and tract descriptions which have actually been consolidated. (Use reverse side of this form if necessary.) _____

No allowable will be assigned to the well until all interests have been consolidated (by communitization, unitization, forced-pooling, or otherwise) or until a non-standard unit, eliminating such interests, has been approved by the Commission.



CERTIFICATION

I hereby certify that the information contained herein is true and complete to the best of my knowledge and belief.

B. L. Eiland

Name

B. L. Eiland

Position

Division Surveyor

Company

Texaco Inc.

Date

September 9, 1983

I hereby certify that the well location shown on this plat was plotted from field notes of actual surveys made by me or under my supervision, and that the same is true and correct to the best of my knowledge and belief.

Date Surveyed

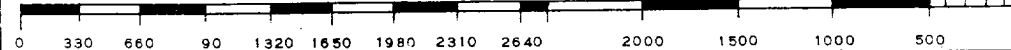
September 1, 1983

Registered Professional Engineer and/or Land Surveyor

B. L. Eiland
B. L. Eiland

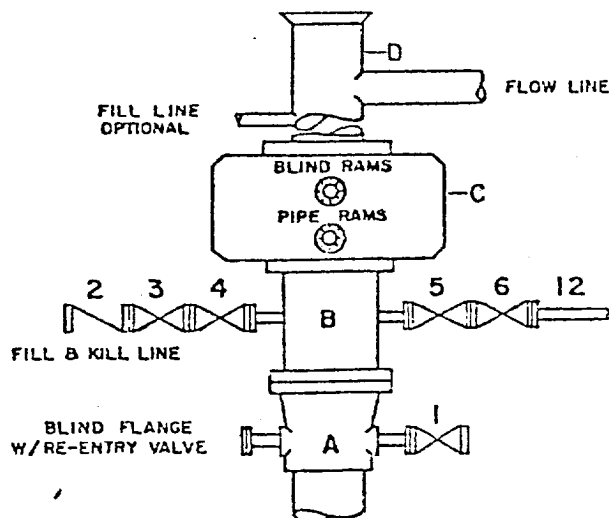
Certificate No.

4386



DRILLING CONTROL CONDITION II-3000 PSI WP

H₂S TRIM REQUIRED
YES _____ NO _____



DRILLING CONTROL

MATERIAL LIST - CONDITION II

- | | |
|-----------|---|
| A | Texaco Wellhead |
| B | 3000# W.P. drilling spool with a 2" minimum flanged outlet for kill-line and 3" minimum flanged outlet for choke line |
| C | 3000# W.P. Dual ram type preventer, hydraulic operated with 1" steel, 3000# W.P. control lines (where sub-structure height is adequate, 2-3000# W.P. single ram type preventers may be utilized.) |
| D | Bell nipple with flowline and fill-up outlets. (Kill line may also be used for fill-up line.) |
| 1,3,4,7,8 | 2" minimum 3000# W.P. flanged full opening steel gate valve, or Halliburton Lo Torc Plug valve. |
| 2 | 2" minimum 3000# W.P. back pressure valve |
| 5,6,9 | 3" minimum 3000# W.P. flanged full opening steel gate valve, or Halliburton Lo Torc Plug valve. |
| 12 | 3" minimum schedule 80, Grade "B", seamless line pipe |
| 13 | 2" minimum x 3" minimum 3000# W.P. flanged cross |
| 10, 11 | 2" minimum 3000# W.P. adjustable choke bodies |
| 14 | Cameron Mud Gauge or equivalent (location optional in choke line.) |



TEXACO, INC.
PRODUCING DEPARTMENT U.S.
MIDLAND, TEXAS



SCALE	DATE	EST NO	DRG NO
DRAWN BY			
CHECKED BY			
APPROVED BY			

EXHIBIT B