

NE EXICO OIL CONSERVATION COMMISSIC
WELL LOCATION AND ACREAGE DEDICATION PLAT

Form C-102
Supersedes C-128
Effective 1-1-65

All distances must be from the outer boundaries of the Section

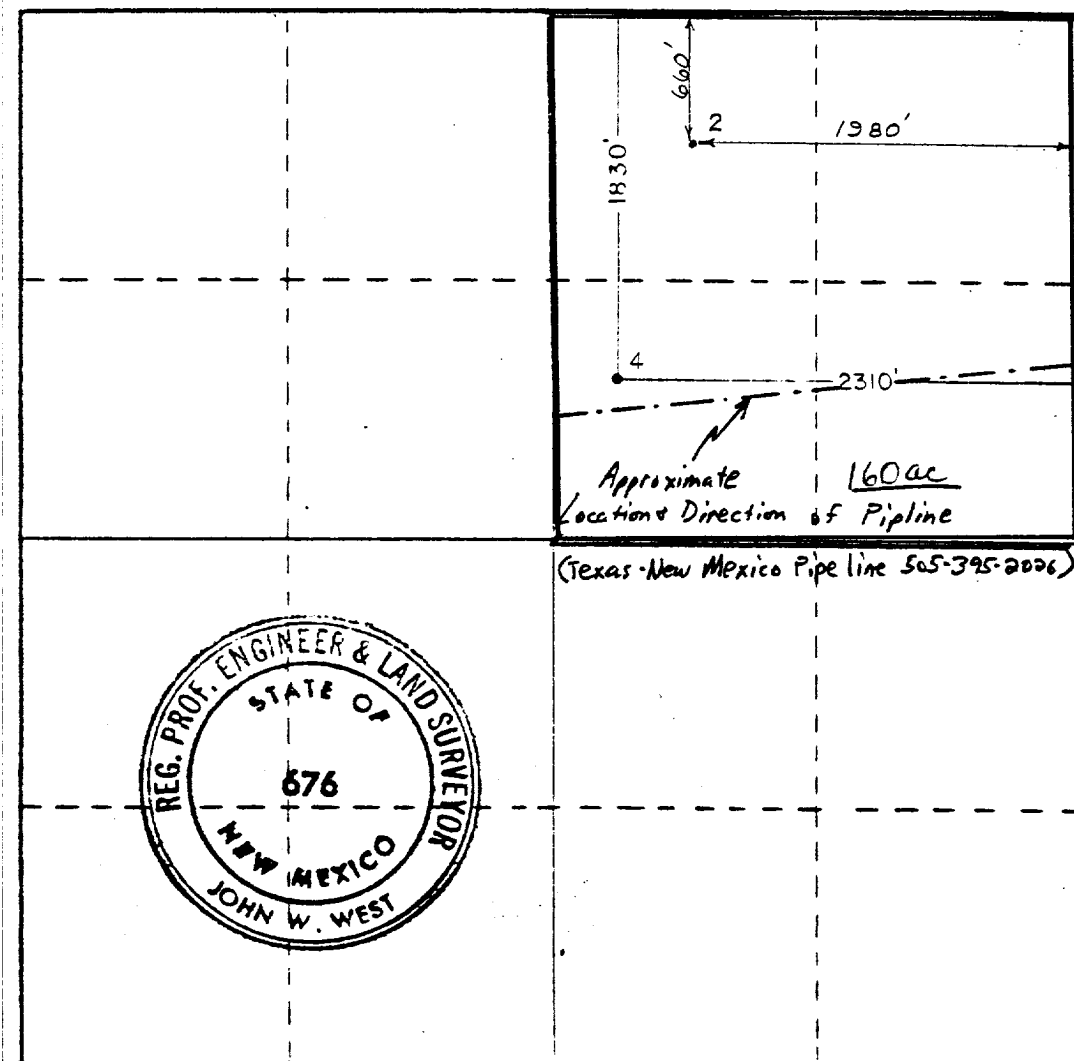
Operator COASTAL OIL & GAS CO.			Lease STATE 8		Well No. 4
Section 8	Township 14 SOUTH	Range 33 EAST	County LEA		
Actual Portage Location of Well: 2310 feet from the EAST line and 1830 feet from the NORTH line					
Ground Level Elev. 4249.9	Producing Formation Bough	Pool Upper Penn	Dedicated Acreage: 160 Acres		

1. Outline the acreage dedicated to the subject well by colored pencil or hachure marks on the plat below.
2. If more than one lease is dedicated to the well, outline each and identify the ownership thereof (both as to working interest and royalty).
3. If more than one lease of different ownership is dedicated to the well, have the interests of all owners been consolidated by communitization, unitization, force-pooling, etc?

☐ Yes ☒ No If answer is "yes," type of consolidation _____

If answer is "no," list the owners and tract descriptions which have actually been consolidated. (Use reverse side of this form if necessary.) _____

No allowable will be assigned to the well until all interests have been consolidated (by communitization, unitization, forced-pooling, or otherwise) or until a non-standard unit, eliminating such interests, has been approved by the Commission.



CERTIFICATION

I hereby certify that the information contained herein is true and complete to the best of my knowledge and belief.

Name Joe Vandenberg
Position Operations Analyst
Company Coastal Oil & Gas Corp.
Date September 29, 1983

I hereby certify that the well location shown on this plat was plotted from field notes of actual surveys made by me or under my supervision, and that the same is true and correct to the best of my knowledge and belief.

Date Surveyed 9-14-83

Registered Professional Engineer and/or Land Surveyor

John W. West
Certificate No. JOHN W. WEST, E
RONALD EIDSON