

NO. OF COPIES RECEIVED	
DISTRIBUTION	
SANTA FE	
FILE	
U.S.G.S.	
LAND OFFICE	
OPERATOR	

5A. Indicate Type of Lease	
STATE <input checked="" type="checkbox"/>	FED <input type="checkbox"/>
6. State Oil & Gas Lease No.	
LC-814	

APPLICATION FOR PERMIT TO DRILL, DEEPEN, OR PLUG BACK

1a. Type of Work

b. Type of Well DRILL ☒ DEEPEN ☐ PLUG BACK ☐
 OIL WELL ☒ GAS WELL ☐ OTHER ☐ SINGLE ZONE ☐ MULTIPLE ZONE ☐

2. Name of Operator

Yates Petroleum Corporation

3. Address of Operator

207 S. 4th, Artesia, New Mexico 88210

4. Location of Well

UNIT LETTER E LOCATED 1980 FEET FROM THE North LINE

AND 660 FEET FROM THE West LINE OF SEC. 21 TWP. 14S RGE. 33E NMPM

7. Unit Agreement Name

8. Farm or Lease Name

Woodpecker "SY" St.

9. Well No.

8

10. Field and Pool, or Wildcat

Saunders Permo-Penn

11. County

Lea

19. Proposed Depth

10,250'

18A. Formation

Permo-Penn

13. Rotary or C.T.

Rotary

20. Elevations (Show whether DF, KI, etc.)

4223.4' GL

21A. Kind & Status Plug. Bond

Blanket

21B. Drilling Contractor

22. Approx. Date Work will start

ASAP

23.

PROPOSED CASING AND CEMENT PROGRAM

SIZE OF HOLE	SIZE OF CASING	WEIGHT PER FOOT	SETTING DEPTH	SACKS OF CEMENT	EST. TOP
17 1/2"	13 3/8"	54# J-55	450'	400 sx	circulate
12 1/4"	8 5/8"	32# J-55	4200'	1300 sx	400'
7 7/8"	5 1/2"	17# N-80-L	TD	450 sx	9200'
		17# K-55-L			
		17# K-55-S			
		17# N-80-L			

We propose to drill a 10,250' well and test the Permo-Penn and intermediate formations. Approximately 450' of surface casing will be set and cement circulated and approximately 4200' of intermediate will be set and cement circulated back to about 400'. Production casing will be set to TD and cemented back to approximately 9200'.

MUD PROGRAM: FW gel to 450', native mud 4200', water/paper to 7500', starch/driskpak/KCL to TD.

BOP PROGRAM: BOP's will be installed at the offset and tested daily.

4. ABOVE SPACE DESCRIBE PROPOSED PROGRAM; IF PROPOSAL IS TO DEEPEN OR PLUG BACK, GIVE DATA ON PRESENT PRODUCTIVE ZONE AND PROPOSED NEW PRODUCTIVE ZONE. GIVE BLOWOUT PREVENTER PROGRAM, IF ANY.

hereby certify that the information above is true and complete to the best of my knowledge and belief.

Signed Jerry Sexton Title Regulatory Agent Date 12/8/83

(This space for State Use)

ORIGINAL SIGNED BY JERRY SEXTON

DISTRICT I SUPERVISOR

APPROVED BY

TITLE

DATE

DEC 12 1983

CONDITIONS OF APPROVAL, IF ANY:

APPROVAL VALID FOR 180 DAYS
 PERMIT EXPIRES 6/12/84
 UNLESS DRILLING UNDERWAY

RECEIVED
DEC 9 1983
C.C.D.
HOBBS OFFICE

**NEW MEXICO OIL CONSERVATION COMMISSION
WELL LOCATION AND ACREAGE DEDICATION PLAT**

Form C-102
Supersedes C-128
Effective 1-1-65

All distances must be from the outer boundaries of the Section

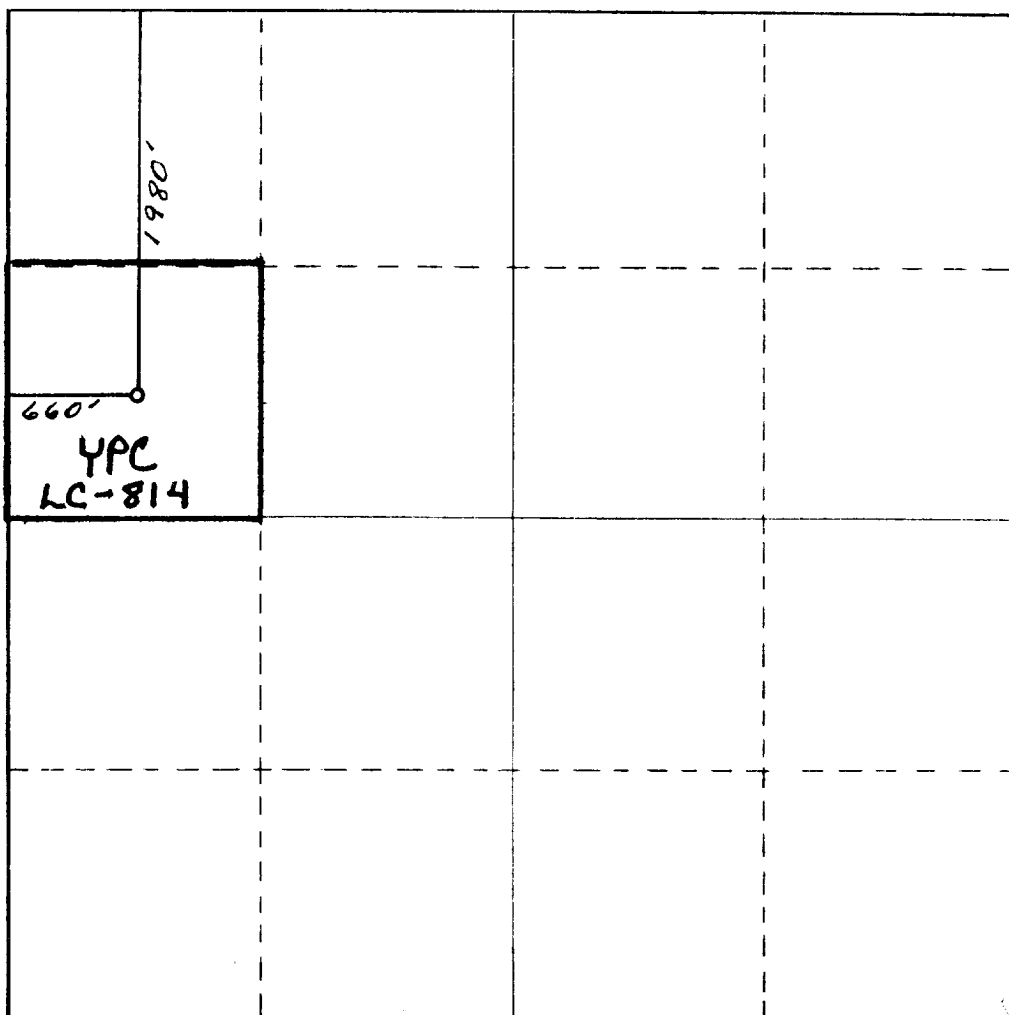
Operator YATES PETROLEUM CORPORATION			Lease Woodpecker "SY" State		Well No. 8
Unit Letter E	Section 21	Township 14 South	Range 33 East	County Lea	
Actual Footage Location of Well: 1980 feet from the North line and 660 feet from the West line					
Ground Level Elev. 4223.4' GL	Producing Formation Permo-Penn		Pool Saunders Permo-Penn		Dedicated Acreage: 40 Acres

1. Outline the acreage dedicated to the subject well by colored pencil or hachure marks on the plat below.
2. If more than one lease is dedicated to the well, outline each and identify the ownership thereof (both as to working interest and royalty).
3. If more than one lease of different ownership is dedicated to the well, have the interests of all owners been consolidated by communitization, unitization, force-pooling, etc?

☐ Yes ☐ No If answer is "yes," type of consolidation _____

If answer is "no," list the owners and tract descriptions which have actually been consolidated. (Use reverse side of this form if necessary.) _____

No allowable will be assigned to the well until all interests have been consolidated (by communitization, unitization, forced-pooling, or otherwise) or until a non-standard unit, eliminating such interests, has been approved by the Commission.



CERTIFICATION

I hereby certify that the information contained herein is true and complete to the best of my knowledge and belief.

Name
Gliserio Rodriguez

Position
Regulatory Agent

Company
Yates Petroleum Corp.

Date
12/8/83

I hereby certify that the well location shown on this plat was plotted from field notes of actual surveys made by me or under my supervision, and that the same is true and correct to the best of my knowledge and belief.

HERSCHEL JONES

Date Surveyed
December 7, 1983

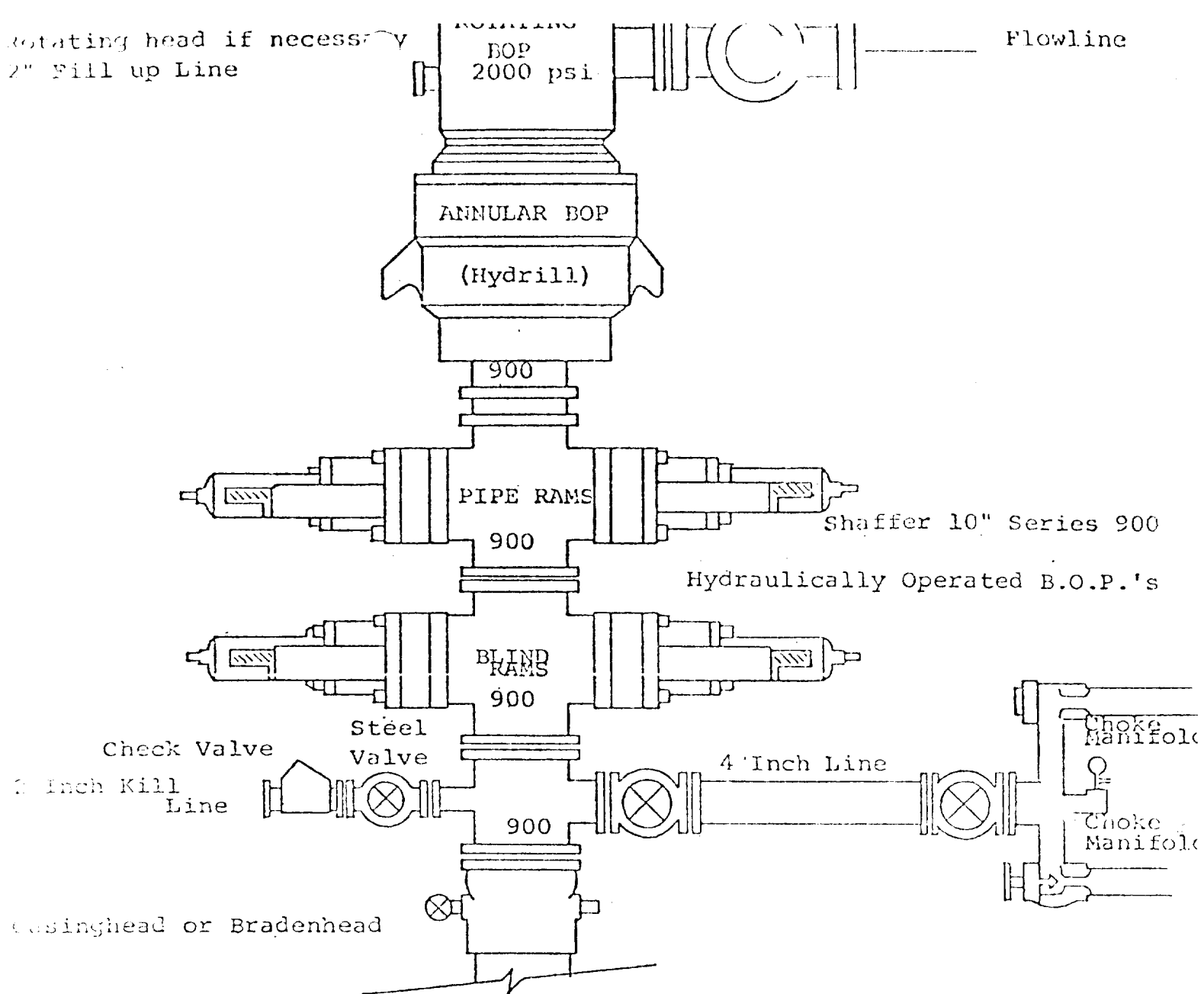
Registered Professional Engineer and/or Land Surveyor

Certificate No. **3640**



RECEIVED
DEC 9 1983
C.C.P.
HOBBS OFFICE

rotating head if necessary
2" Fill up Line



THE FOLLOWING CONSTITUTE MINIMUM BLOWOUT PREVENTER REQUIREMENTS

1. All preventers to be hydraulically operated with secondary manual controls installed prior to drilling out from under casing.
2. Choke outlet to be a minimum of 4" diameter.
3. Kill line to be of all steel construction of 2" minimum diameter.
4. All connections from operating manifolds to preventers to be all steel. hole or tube a minimum of one inch in diameter.
5. The available closing pressure shall be at least 15% in excess of that required with sufficient volume to operate the B.O.P.'s.
6. All connections to and from preventer to have a pressure rating equivalent to that of the B.O.P.'s.
7. Inside blowout preventer to be available on rig floor.
8. Operating controls located a safe distance from the rig floor.
9. Hole must be kept filled on trips below intermediate casing.
10. D. P. float must be installed and used below zone of first gas intrusion.

RECEIVED
DEC 9 1983
C.S.D.
FIELD OFFICE

12
12
12