

NO. OF COPIES RECEIVED	
DISTRIBUTION	
SANTA FE	
FILE	
U.S.G.S.	
LAND OFFICE	
OPERATOR	

5A. Indicate Type of Lease

STATE ☐ FEE ☒

5. State Oil & Gas Lease No.

APPLICATION FOR PERMIT TO DRILL, DEEPEN, OR PLUG BACK

1a. Type of Work

DRILL ☒DEEPEN ☐PLUG BACK ☐

b. Type of Well

OIL
WELL ☒GAS
WELL ☐

OTHER

SINGLE
ZONE ☐MULTIPLE
ZONE ☐

2. Name of Operator

Great Western Drilling Company

3. Address of Operator

P.O. Box 1659, Midland, TX 79702

4. Location of Well

UNIT LETTER

P

LOCATED

510

FEET FROM THE

South

LINE

AND 560

FEET FROM THE

East

LINE OF SEC. 31

TWP. 12S

RGE. 36E

NMPM

7. Unit Agreement Name

8. Farm or Lease Name

Libbie James

9. Well No.

1

10. Field and Pool, or Wildcat

Tatum-Wolfcamp Pool

12. County

Lea

19. Proposed Depth

10,500'

19A. Formation

Wolfcamp

20. Rotary or C.T.

Rotary

21. Elevations (Show whether DF, RT, etc.)

4005.6'

21A. Kind & Status Plug. Bond

Blanket

21B. Drilling Contractor

N.A.

22. Approx. Date Work will start

February 14, 1984

23.

PROPOSED CASING AND CEMENT PROGRAM

SIZE OF HOLE	SIZE OF CASING	WEIGHT PER FOOT	SETTING DEPTH	SACKS OF CEMENT	EST. TOP
17-1/2"	13-3/8"	48#	450'	460	Surface
12-1/4"	8-5/8"	24, 32 & 36#	4,600'	2,280	Surface
7-7/8"	5-1/2"	17#	10,500'	1,525	4,600'

Blowout Preventer: 3,000 psi Hydraulic Double, 10"x900 Series w/accumulator closing unit.
Manifold 4"x900 Series flanged connections, 1 positive and 1 adjustable
choke. One Hydril 10"x900 Series.

APPROVAL VALID FOR 180 DAYS
PERMIT EXPIRES 8/13/84
UNLESS DRILLING UNDERWAY

IN ABOVE SPACE DESCRIBE PROPOSED PROGRAM; IF PROPOSAL IS TO DEEPEN OR PLUG BACK, GIVE DATA ON PRESENT PRODUCTIVE ZONE AND PROPOSED NEW PRODUCTIVE ZONE. GIVE BLOWOUT PREVENTER PROGRAM, IF ANY.

I hereby certify that the information above is true and complete to the best of my knowledge and belief.

Signed M. H. Meyer Title Ass't. to Gen. Supt. Date 2-3-84

(This space for State Use)

Eddie W. Seay
Oil & Gas Inspector

APPROVED BY _____ TITLE _____ DATE FEB 10 1984

CONDITIONS OF APPROVAL, IF ANY:

Approved for drilling, only. Production will not be authorized until approval is obtained for the unorthodox location.

**NEW MEXICO OIL CONSERVATION COMMISSION
WELL LOCATION AND ACREAGE DEDICATION - LAT**

Form C-102
Supersedes C-128
Effective 1-1-65

All distances must be from the outer boundaries of the Section.

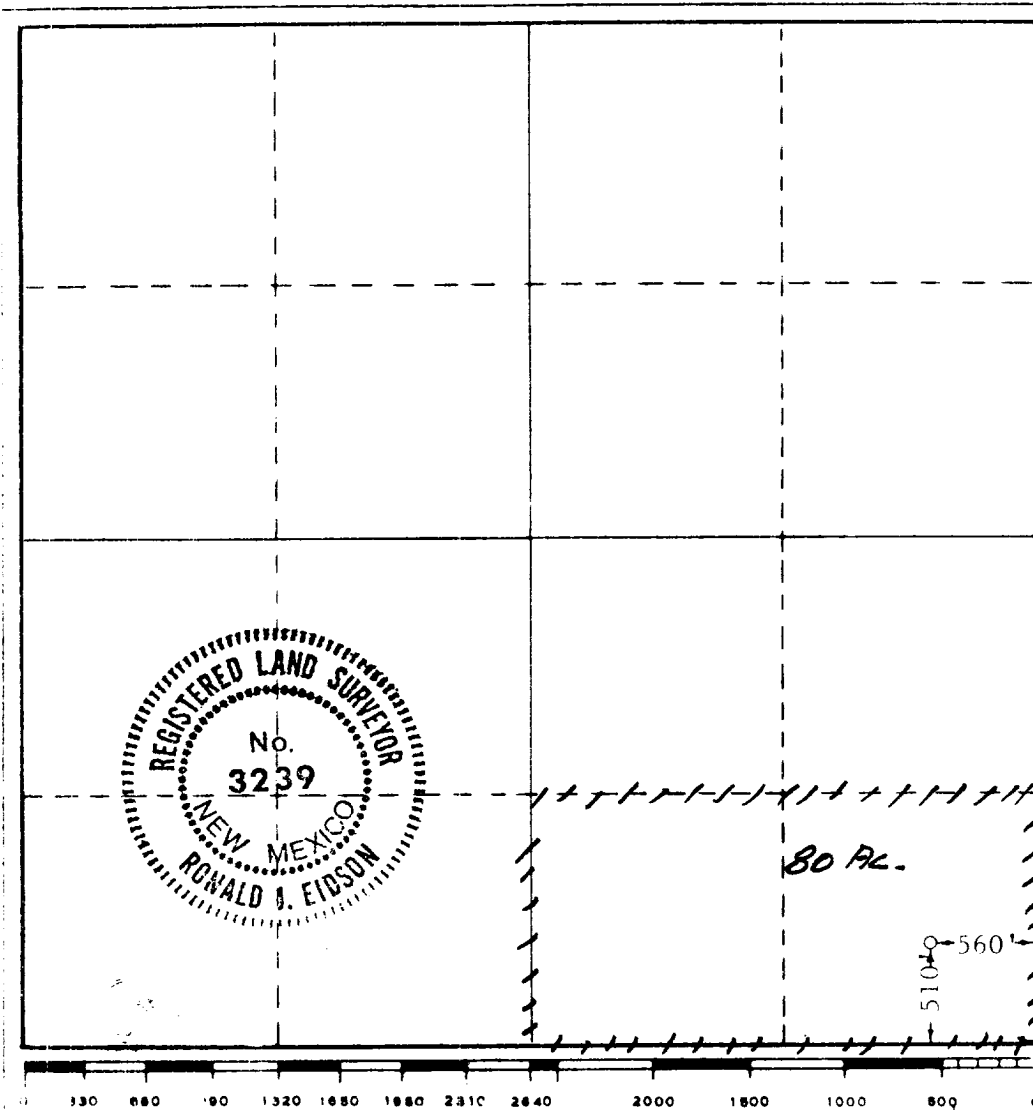
Operator Great Western Drilling Co.			Lease Libbie James		Well No. 1
Tract Letter P	Section 31	Township 12 South	Range 36 East	County Lea	
Actual Footage Location of Well: 510 feet from the South line and 560 feet from the East line					
Ground Level Elev. 4005.6'	Producing Formation Wolfcamp		Pool Tatum-Wolfcamp		Dedicated Acreage: 80 Acres

1. Outline the acreage dedicated to the subject well by colored pencil or hachure marks on the plat below.
2. If more than one lease is dedicated to the well, outline each and identify the ownership thereof (both as to working interest and royalty).
3. If more than one lease of different ownership is dedicated to the well, have the interests of all owners been consolidated by communitization, unitization, force-pooling, etc?

☐ Yes ☐ No If answer is "yes," type of consolidation _____

If answer is "no," list the owners and tract descriptions which have actually been consolidated. (Use reverse side of this form if necessary.) _____

No allowable will be assigned to the well until all interests have been consolidated (by communitization, unitization, forced-pooling, or otherwise) or until a non-standard unit, eliminating such interests, has been approved by the Commission.



CERTIFICATION

I hereby certify that the information contained herein is true and complete to the best of my knowledge and belief.

M. B. Myers

Name

M. B. Myers

Position

Ass't to Gen. Supt.

Company

Great Western Drilling Co.

Date

2-3-84

I hereby certify that the well location shown on this plat was plotted from field notes of actual surveys made by me or under my supervision, and that the same is true and correct to the best of my knowledge and belief.

Date Surveyed

February 2, 1984

Registered Professional Engineer and Land Surveyor

Ronald J. Eidson

Certificate No. **JOHN W. WEST 676**
PATRICK A. ROMERO 6663
Ronald J. Eidson 3239

RECEIVED
FEB 6 1984
O.C.D.
HOBBS OFFICE

177