

STATE OF NEW MEXICO
ENERGY AND MINERALS DEPARTMENT

OIL CONSERVATION DIVISION

P. O. BOX 2088

SANTA FE, NEW MEXICO 87501

30-025-28819

Form C-101
Revised 10-1-78

NO. OF COPIES RECEIVED	
DISTRIBUTION	
SANTA FE	
FILE	
U.S.G.S.	
LAND OFFICE	
OPERATOR	

5A. Indicate Type of Lease

STATE ☒ FEDERAL ☐

5. State Oil & Gas Lease No.
B-9380

APPLICATION FOR PERMIT TO DRILL, DEEPEN, OR PLUG BACK

1a. Type of Work b. Type of Well OIL WELL <input checked="" type="checkbox"/> GAS WELL <input type="checkbox"/> OTHER <input type="checkbox"/> SINGLE ZONE <input checked="" type="checkbox"/> MULTIPLE ZONE <input type="checkbox"/>		2. Name of Operator Texaco Inc.		7. Unit Agreement Name	
3. Address of Operator P. O. Box 3109, Midland, Texas 79702		8. Farm or Lease Name New Mexico "AQ" State NCT-11		9. Well No. 3	
4. Location of Well UNIT LETTER K LOCATED 1980 FEET FROM THE south LINE AND 1980 FEET FROM THE west LINE OF SEC. 3 TWP. 14-S RGE. 33-E NMPM		10. Field and Pool, or Wildcat Lazy J. Penn		12. County Lea	
11. Elevations (show whether DF, KT, etc.) 4225' GR		19. Proposed Depth 10,200'		19A. Formation Wolfcamp	
21A. Kind & Status Plug. Bond -		21B. Drilling Contractor -		20. History or C.T. Rotary	
22. Approx. Date Work will start August 15, 1984					

23.

PROPOSED CASING AND CEMENT PROGRAM

SIZE OF HOLE	SIZE OF CASING	WEIGHT PER FOOT	SETTING DEPTH	SACKS OF CEMENT	EST. TOP
17 1/2"	13-3/8"	48# H-40	525'	600	Circulate
12 1/4"	8-5/8"	24# K-55	4200'	2000	Circulate
		24# S-80			
		28# S-80			
7-7/8"	5 1/2"	17# N-80	10,200'	2150	Circulate
		17# K-55			

CEMENT PROGRAM

SURFACE CASING: 600 sxs Class "H" w/2% CaCl (15.6 ppg, 1.18 ft³/sx).

INTERMEDIATE CASING: 1800 sxs Light Weight w/15# salt and 1/4# flocele (12.7 ppg, 2.10 ft³/sx) followed by 200 sxs Class "H" w/1/4# flocele (15.6 ppg, 1.18 ft³/sx).

PRODUCTION CASING: 1ST STAGE: 750 sxs Light Weight W/1/4# flocele (12.3 ppg, 200 ft³/sx) followed by 200 sxs 50-50 Pozmix Class "H" w/1/4# flocele and 0.8% HALAD-9 (13.6 ppg, 1.40 ft³/sx). DV Tool @ 7000' (Displacement type)

2ND STAGE: 1200 sxs Light Weight w/1/4# flocele (12.3 ppg, 2.00 ft³/sx).

IN ABOVE SPACE DESCRIBE PROPOSED PROGRAM; IF PROPOSAL IS TO DEEPEN OR PLUG BACK, GIVE DATA ON PRESENT PRODUCTIVE ZONE AND PROPOSED NEW PRODUCTIVE ZONE. GIVE BLOWOUT PREVENTER PROGRAM, IF ANY.

I hereby certify that the information above is true and complete to the best of my knowledge and belief.

Signed Russell E. Sexton Title Engineer's Assistant Date July 23, 1984

(This space for State Use)

Oil & Gas Inspector

APPROVED BY _____ TITLE _____ DATE JUL 25 1984

CONDITIONS OF APPROVAL, IF ANY:

APPROVAL VALID FOR 120 DAYS
PERMIT EXPIRES 10-25-84
UNLESS DRILLING UNDERWAY

NEW MEXICO OIL CONSERVATION COMMISSION
WELL LOCATION AND ACREAGE DEDICATION PLAT

Form 7-1-1
Supersedes 6-12-8
Effective 1-1-8

All distances must be from the outer boundaries of the Section

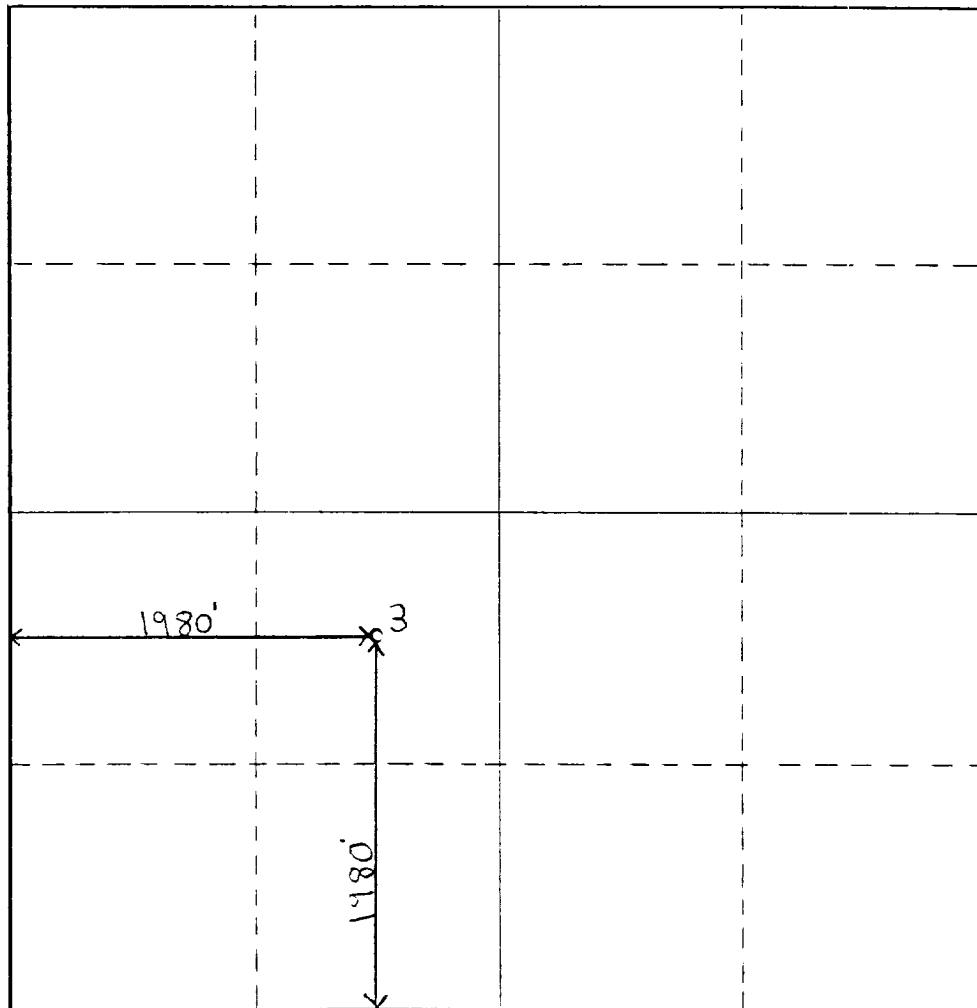
Owner Texaco Inc.			Lease New Mexico "AQ" State NCT-11		Well No. 3
Section K	Section 3	Township 14-S	Range 33-E	County Lea	
Actual Well Location of Well:					
1980 feet from the south line and		1980 feet from the west line			
Ground Level Elev. 4225' GR	Producing Formation Wolfcamp	Pool Lazy J. Penn		Dedicated Acreage 40 Acres	

1. Outline the acreage dedicated to the subject well by colored pencil or hatchure marks on the plat below.
2. If more than one lease is dedicated to the well, outline each and identify the ownership thereof (both as to working interest and royalty).
3. If more than one lease of different ownership is dedicated to the well, have the interests of all owners been consolidated by communitization, unitization, force-pooling, etc?

☐ Yes ☐ No If answer is "yes," type of consolidation _____

If answer is "no," list the owners and tract descriptions which have actually been consolidated. (Use reverse side of this form if necessary.) _____

No allowable will be assigned to the well until all interests have been consolidated (by communitization, unitization, forced-pooling, or otherwise) or until a non-standard unit, eliminating such interests, has been approved by the Commission.



CERTIFICATION

I hereby certify that the information contained herein is true and complete to the best of my knowledge and belief.

Russell E. Sexton
Name

Russell E. Sexton

Position
Engineer's Assistant

Company
Texaco Inc.

Date
July 23, 1984

I hereby certify that the well location shown on this plat was plotted from field notes of actual surveys made by me or under my supervision, and that the same is true and correct to the best of my knowledge and belief.

July 16, 1984

Date Surveyed
R. S. Lane

Registered Professional Engineer and/or Land Surveyor

R. S. Lane **#8103**

Certificate No.



ELF

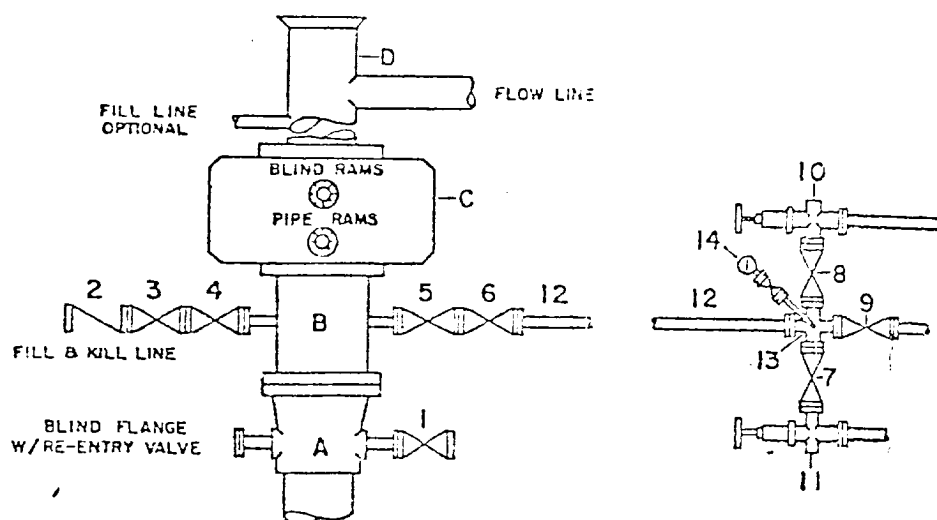
RECEIVED

APR 24 1984

U.S. DEPT. OF JUSTICE
FEDERAL BUREAU OF INVESTIGATION

DRILLING CONTROL
CONDITION II-3000 PSI WP

H₂S TRIM REQUIRED
YES _____ NO _____



DRILLING CONTROL

MATERIAL LIST - CONDITION II

- | | |
|---------------|---|
| A | Texaco Wellhead |
| B | 3000# W.P. drilling spool with a 2" minimum flanged outlet for kill-line and 3" minimum flanged outlet for choke line |
| C | 3000# W.P. Dual ram type preventer, hydraulic operated with 1" steel, 3000# W.P. control lines (where sub-structure height is adequate, 2-3000# W.P. single ram type preventers may be utilized.) |
| D | Bell nipple with flowline and fill-up outlets. (Kill line may also be used for fill-up line.) |
| 1,3,4,
7,8 | 2" minimum 3000# W.P. flanged full opening steel gate valve, or Halliburton Lo Torc Plug valve. |
| 2 | 2" minimum 3000# W.P. back pressure valve |
| 5,6,9 | 3" minimum 3000# W.P. flanged full opening steel gate valve, or Halliburton Lo Torc Plug valve. |
| 12 | 3" minimum schedule 80, Grade "B", seamless line pipe |
| 13 | 2" minimum x 3" minimum 3000# W.P. flanged cross |
| 10, 11 | 2" minimum 3000# W.P. adjustable choke bodies |
| 14 | Cameron Mud Gauge or equivalent (location optional in choke line.) |



TEXACO, INC.
PRODUCING DEPARTMENT U.S.
MIDLAND, TEXAS



SCALE	DATE	EXT. NO.	Dwg. NO.
DRAWN BY			
CHECKED BY			
APPROVED BY			

EXHIBIT B

ELF

RECEIVED

JUL 24 1984

U.S. DEPT. OF JUSTICE
FEDERAL BUREAU OF INVESTIGATION
WASHINGTON, D.C. 20535