

STATE OF NEW MEXICO
ENERGY AND MINERALS DEPARTMENT

OIL CONSERVATION DIVISION

P. O. BOX 2088
SANTA FE, NEW MEXICO 87501

Form C-101
Revised 10-1-78

NO. OF COPIES RECEIVED	
DISTRIBUTION	
SANTA FE	
FILE	
U.S.G.S.	
LAND OFFICE	
OPERATOR	

5A. Indicate Type of Lease
STATE ☒ FEE ☐
5. State Oil & Gas Lease No.
B-9560

APPLICATION FOR PERMIT TO DRILL, DEEPEN, OR PLUG BACK

1a. Type of Work b. Type of Well OIL WELL <input checked="" type="checkbox"/> GAS WELL <input type="checkbox"/> OTHER <input type="checkbox"/> SINGLE ZONE <input checked="" type="checkbox"/> MULTIPLE ZONE <input type="checkbox"/>		7. Unit Agreement Name	
2. Name of Operator Texaco Inc.		8. Farm or Lease Name NCT-1 New Mexico "BG" State	
3. Address of Operator P. O. Box 3109, Midland, Texas 79702		9. Well No. 9	
4. Location of Well UNIT LETTER G LOCATED 1980 FEET FROM THE North LINE AND 2180 FEET FROM THE East LINE OF SEC. 14 TWP. 14-S RGE. 33-E NMPM		10. Field and Pool, or Wildcat Saunders Permo U. Penn UNDESIGNATED	
12. County Lea		19. Proposed Depth 10,100'	
1. Elevations (Show whether D.F., K.I., etc.) 4193' GR		19A. Formation Permo Upper Penn	
21A. Kind & Status Plug. Bond -		20. Rotary or C.T. Rotary	
21B. Drilling Contractor -		22. Approx. Date Work will start October 1, 1984	

PROPOSED CASING AND CEMENT PROGRAM

SIZE OF HOLE	SIZE OF CASING	WEIGHT PER FOOT	SETTING DEPTH	SACKS OF CEMENT	EST. TOP
17 1/2"	13 3/8"	48#, H-40	525'	600	Circulate
12 1/4"	8 5/8"	24#, K-55	4200'	2000	Circulate
7 7/8"	5 1/2"	24#, S-80			
		17#, N-80	10,100'	2150	Circulate
		17#, K-55			

CEMENT PROGRAM

- SURFACE CASING: 600 sacks Class "H" w/2% CaCl (15.6 ppg, 1.18 ft³/sack).
- INTERMEDIATE CASING: 1800 sacks Light Weight w/15# salt and 1/4# flocele (12.7 ppg, 2.10 ft³/sack) followed by 200 sacks Class "H" w/1/4# flocele (15.6 ppg, 1.18 ft³/sack).
- PRODUCTION CASING: 1st Stage: 750 sacks Light Weight w/1/4# flocele, (12.3 ppg, 2.00 ft³/sack) followed by 200 sacks 50-50 Pozmix Class "H" w/1/4# flocele and 0.8% HALAD-9 (13.6 ppg, 1.40 ft³/sack). DV Tool at 7000' (Displacement type).
2nd Stage: 1200 sacks Light Weight w/1/4# flocele (12.3 ppg, 2.00 ft³/sack).

IN ABOVE SPACE DESCRIBE PROPOSED PROGRAM; IF PROPOSAL IS TO DEEPEN OR PLUG BACK, GIVE DATA ON PRESENT PRODUCTIVE ZONE AND PROPOSED NEW PRODUCTIVE ZONE. GIVE BLOWOUT PREVENTER PROGRAM, IF ANY.

I hereby certify that the information above is true and complete to the best of my knowledge and belief.

Signed Russell E. Sexton Russell E. Sexton Title Engineer's Asst.

Date 9-14-84

(This space for State Use)

ORIGINAL SIGNED BY JERRY SEXTON

APPROVED BY DISTRICT 1 SUPERVISOR

TITLE

DATE

CONDITIONS OF APPROVAL, IF ANY:

SEP 18 1984

APPROVAL VALID FOR 180 DAYS
PERMIT EXPIRES 3/18/85
UNLESS DRILLING UNDERWAY

N MEXICO OIL CONSERVATION COMMISS
WELL LOCATION AND ACREAGE DEDICATION PLAT

Form C-102
Supersedes C-128
Effective 1-1-65

All distances must be from the outer boundaries of the Section.

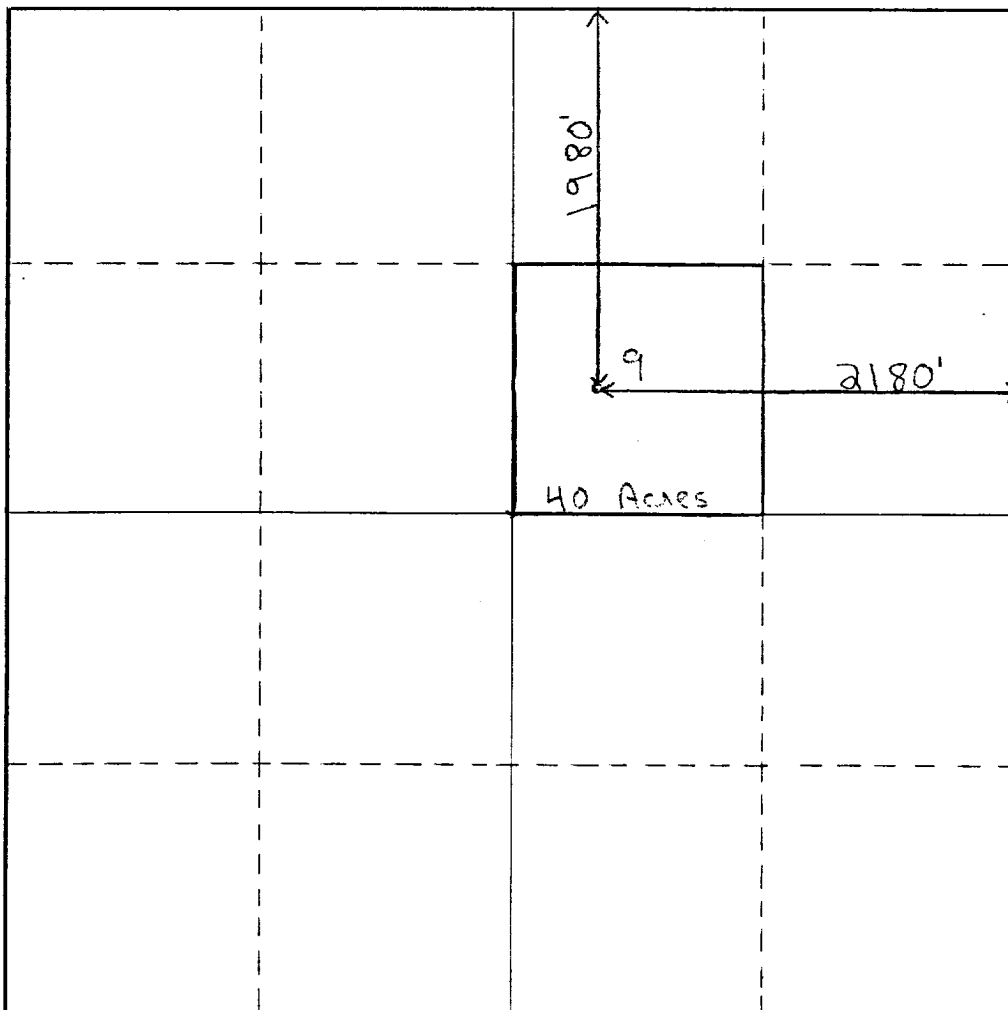
Operator Texaco Inc.			Lease New Mexico "BG" State NCT-1		Well No. 9
Unit Letter G	Section 14	Township 14-S	Range 33-E	County Lea	
Actual Footage Location of Well: 1980 feet from the North line and 2180 feet from the East line					
Ground Level Elev. 4193'	Producing Formation Permo Upper Penn		Pool Saunders Permo Upper Penn		Dedicated Acreage: 40 Acres

1. Outline the acreage dedicated to the subject well by colored pencil or hachure marks on the plat below.
2. If more than one lease is dedicated to the well, outline each and identify the ownership thereof (both as to working interest and royalty).
3. If more than one lease of different ownership is dedicated to the well, have the interests of all owners been consolidated by communitization, unitization, force-pooling, etc?

☐ Yes ☐ No If answer is "yes," type of consolidation _____

If answer is "no," list the owners and tract descriptions which have actually been consolidated. (Use reverse side of this form if necessary.) _____

No allowable will be assigned to the well until all interests have been consolidated (by communitization, unitization, forced-pooling, or otherwise) or until a non-standard unit, eliminating such interests, has been approved by the Commission.



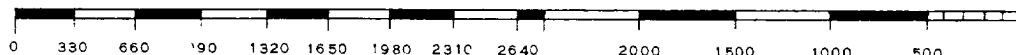
CERTIFICATION

I hereby certify that the information contained herein is true and complete to the best of my knowledge and belief.

Russell E. Sexton
Name
Russell E. Sexton
Position
Engineer's Asst.
Company
Texaco Inc.
Date
9-14-84

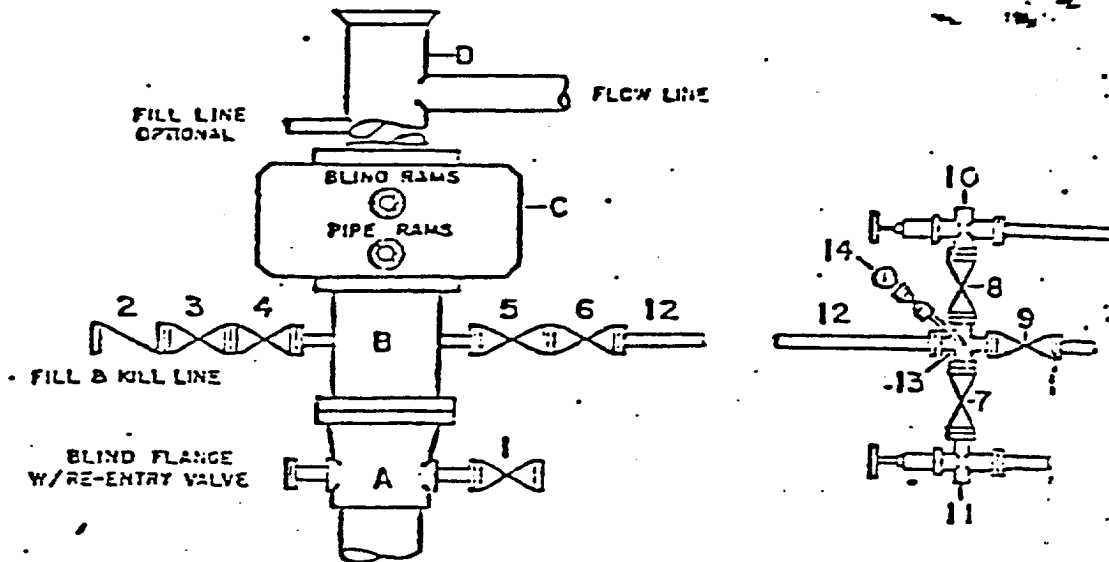
I hereby certify that the well location shown on this plat was plotted from field notes of actual surveys made by me or under my supervision, and that the same is true and correct to the best of my knowledge and belief.

Date Surveyed
8-17-84
Registered Professional Engineer and/or Land Surveyor
B. L. Eiland
Certificate No.
4386



DRILLING CONTROL CONDITION II-3000 PSI WP

H₂S TRIM REQUIRED
YES _____ NO _____



DRILLING CONTROL

MATERIAL LIST - CONDITION II

- A Texaco Wellhead
- B 3000 W.P. drilling spool with a 2" minimum flanged outlet for kill-line and 3" minimum flanged outlet for choke line
- C 3000 W.P. Dual ram type preventer, hydraulic operated with 1" steel, 3000 W.P. control lines (where sub-structure height is adequate, 2-3000 W.P. single ram type preventers may be utilized.)
- D Bell nipple with flowline and fill-up outlets. (Kill line may also be used for fill-up line.)
- 1,3,4, 7,8 2" minimum 3000 W.P. flanged full opening steel gate valve, or Halliburton Lo Torc Plug Valve.
- 2 2" minimum 3000 W.P. back pressure valve
- 5,6,9 3" minimum 3000 W.P. flanged full opening steel gate valve, or Halliburton Lo Torc Plug Valve.
- 12 3" minimum schedule 80, Grade "B", seamless line pipe
- 13 2" minimum x 3" minimum 3000 W.P. flanged cross
- 10, 11 2" minimum 3000 W.P. adjustable choke bodies
- 14 Cameron Mud Gauge or equivalent (location optional in choke line.)

Campana, Raul
1990-1991

RECEIVED

SEP 17 1984

U.S. AIR FORCE
HONOLULU OFFICE

