

OIL CONSERVATION DIVISION

P. O. BOX 2088
SANTA FE, NEW MEXICO 87501

Form C-101
Revised 10-1-78

NO. OF COPIES RECEIVED	
DISTRIBUTION	
SANTA FE	
FILE	
U.S.G.S.	
LAND OFFICE	
OPERATOR	

5A. Indicate Type of Lease
STATE ☒ FEE ☐

5. State Oil & Gas Lease No.
K-4670

APPLICATION FOR PERMIT TO DRILL, DEEPEN, OR PLUG BACK

1a. Type of Work
b. Type of Well DRILL ☒ DEEPEN ☐ PLUG BACK ☐
OIL WELL ☒ GAS WELL ☐ OTHER ☐ SINGLE ZONE ☐ MULTIPLE ZONE ☐

2. Name of Operator
Amoco Production Company

3. Address of Operator
P.O. Box 68, Hobbs NM 88240

4. Location of Well
UNIT LETTER D LOCATED 710 FEET FROM THE North LINE
AND 660 FEET FROM THE West LINE OF SEC. 19 TWP. 13-S RGE. 33-E

7. Unit Agreement Name

8. Term or Lease Name
State "DY"

9. Well No.
3

10. Field and Pool, or Wildcat
Baum Upper Penn

12. County
Lea

19. Proposed Depth
10,200'

19A. Formation
Bough "C"

20. Rig or C.T.
Rotary

21. Elevations (Show whether D.F., H.I., etc.)
4296.1'

21A. Kind & Status Plug and
Blanket-on-file

21B. Drilling Contractor
N/A

22. Approx. Date Work will start
ASAP

PROPOSED CASING AND CEMENT PROGRAM

SIZE OF HOLE	SIZE OF CASING	WEIGHT PER FOOT	SETTING DEPTH	SACKS OF CEMENT	EST. TOP
17 1/2"	13 3/8"	48#	450'	Circulate	Surface
11"	8 5/8"	24#	4060'	Tieback to 13 3/8"	450'
7 7/8"	5 1/2"	15.5#	10,200'	Tieback 500' above wellcamp	8450'

Propose to drill and equip well in the Bough "C" formation. After reaching TD, logs will be run and evaluated. Perforate and/or stimulate as necessary in attempting commercial production. Mud Program: 0-450' Fresh Water and Native Mud
450-4060' Brine Water
4060-9500' Fresh Water w/min. properties for safe hole conditions.
9500'-TD LSND or Salt Gel/Starch

* This is a replacement well for State "DY" No. 2

BOP Diagram attached

0+6 NMOC, H 1-JRB 1-FIN 1-CC

ABOVE SPACE DESCRIBE PROPOSED PROGRAM: IF PROPOSAL IS TO DEEPEN OR PLUG BACK, GIVE DATA ON PRESENT PRODUCTIVE ZONE AND PROPOSED NEW PRODUCTIVE ZONE. GIVE BLOWOUT PREVENTER PROGRAM, IF ANY.

I hereby certify that the information above is true and complete to the best of my knowledge and belief.

Signed Larry C. Clark Title Asst. Admin. Analyst Date 2-1-85
(This space for State Use)

APPROVED BY Eddie W. Seay TITLE Oil & Gas Inspector DATE FEB - 1 1985
CONDITIONS OF APPROVAL, IF ANY:

Permit Expires 6 Months From Approval
Date Unless Drilling Underway.

NEW MEXICO OIL CONSERVATION COMMISSION
WELL LOCATION AND ACREAGE DEDICATION PLAT

Form C-102
Supersedes C-128
Effective 1-1-65

All distances must be from the outer boundaries of the Section.

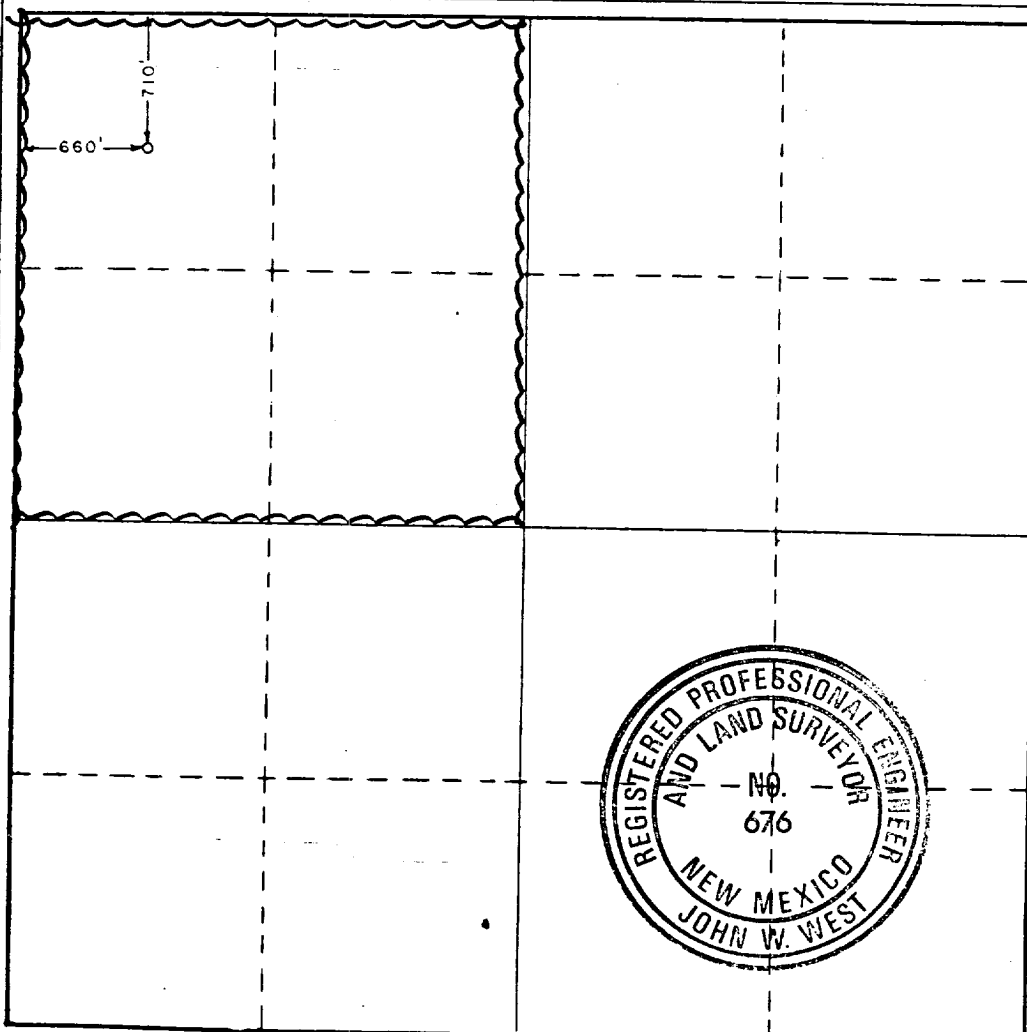
Operator AMOCO PRODUCTION CO.			Lease STATE "DY"		Well No. 3
Unit Letter D	Section 19	Township 13S	Range 33E	County LEA	
Actual Footage Location of Well: 710 feet from the NORTH line and 660 feet from the WEST line					
Ground Level Elev. 4296.1	Producing Formation Bough "C"		Pool Baum Upper Penn	Dedicated Acreage: 160 Acres	

1. Outline the acreage dedicated to the subject well by colored pencil or hachure marks on the plat below.
2. If more than one lease is dedicated to the well, outline each and identify the ownership thereof (both as to working interest and royalty).
3. If more than one lease of different ownership is dedicated to the well, have the interests of all owners been consolidated by communitization, unitization, force-pooling, etc?

☐ Yes ☐ No If answer is "yes," type of consolidation _____

If answer is "no," list the owners and tract descriptions which have actually been consolidated. (Use reverse side of this form if necessary.) _____

No allowable will be assigned to the well until all interests have been consolidated (by communitization, unitization, forced-pooling, or otherwise) or until a non-standard unit, eliminating such interests, has been approved by the Commission.



CERTIFICATION

I hereby certify that the information contained herein is true and complete to the best of my knowledge and belief.

Name Harry C. Clark
Position Asst. Admin. Analyst
Company Amoco Production Co.
Date 2-1-85

I hereby certify that the well location shown on this plat was plotted from field notes of actual surveys made by me or under my supervision, and that the same is true and correct to the best of my knowledge and belief.

Date Surveyed
1/29/85

Registered Professional Engineer and/or Land Surveyor

John W. West
Certificate No. JOHN W. WEST, 676
RONALD J. EIDSON, 3239

0 330 660 990 1320 1650 1980 2310 2640 2000 1600 1000 600 0

RECEIVED

FEB -1 1985

C.C.D.
HOBBS OFFICE

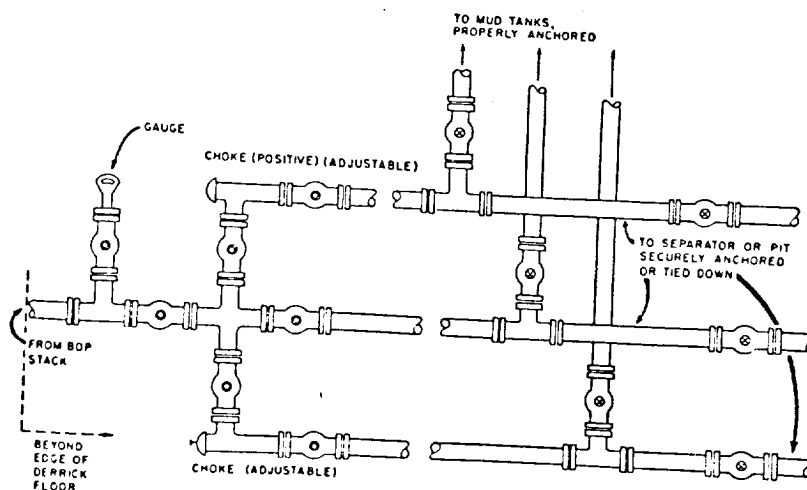
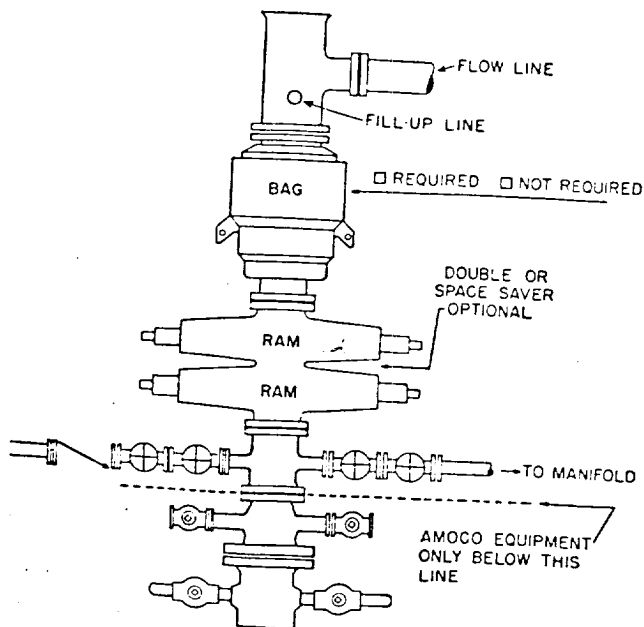
1. BOP's to be fluid operated. BOP's and all fittings must be in good condition and rated at 3000 psi w.p. minimum.
2. Equipment through which bit must pass shall be at least as large as casing size being drilled through.
3. Upper kelly cock is required and shall be 3000 psi w.p. minimum. Lower kelly cock is (required)(not required).
4. Hydril or comparable safety valve shall be available on rig floor with connection or subs to fit any tool joint in the string. Valve to be full bore 5000 psi w.p. minimum.
5. Hydril or equivalent drill pipe back pressure valve is (required)(not required).
6. All equipment upstream of chokes, including kill line equipment shall be flanged or clamped and of a test pressure no less than that of the blowout preventer. All valves upstream of choke shall be (3") (4") gate valves Cameron Type "F" or equivalent. All equipment downstream of chokes may be flanged or screw end gate or plug. Line from spool to manifold cross to be a minimum of 3", straight and short as possible with minimum bends. Other lines may be 2", 3" or 4". Choke manifold, beyond second valve from cross, must be positioned outside of substructure. Manifold, header and all lines must be adequately supported and properly anchored. Two inch (2") lines and valves are permitted on the kill line. All valves designated for H₂S service are (required) (not required).
7. Blowout preventer closing unit equipment to include accumulator capable of closing, opening and closing the bag and pipe rams with a minimum remaining pressure of 1200 psi. After closure, the remaining fluid volume will be at least 50 percent of original volume. Two independent sources of pump power are required on each closing unit installation and shall meet all IADC specifications. Operating time for closing unit shall not be greater than one minute with charging pump shut down. Time test must be witnessed by Amoco representative while nipping up and test results reported on IADC report. Failure to meet these conditions will necessitate corrective action by contractor and retesting all at contractor's expense.
8. The accumulator must be located at least 50 feet from the well. Blowout preventer controls must be properly labeled and located as close to drillers position as feasible. Floor control valves are (required)(not required).
9. Fluid lines from accumulator to BOP's and all remote control fluid lines shall be steel, and rated at or above maximum accumulator pressure. Lines shall be routed in bundles and adequately protected from damage.
10. Use rams in following positions:*

Upper ram
Lower Ram

Drilling
Drill pipe
Blind

Running Casing
Casing
Blind

11. Extensions and hand wheels to be installed and braced at all times.



10-1-42
10-1-42
10-1-42

Amant Bond
10-1-42
ELF