

**NEW MEXICO OIL CONSERVATION COMMISSION
WELL LOCATION AND ACREAGE DEDICATION PLAT**

Form C-102
Supersedes C-128
Effective 1-4-65

All distances must be from the outer boundaries of the Section.

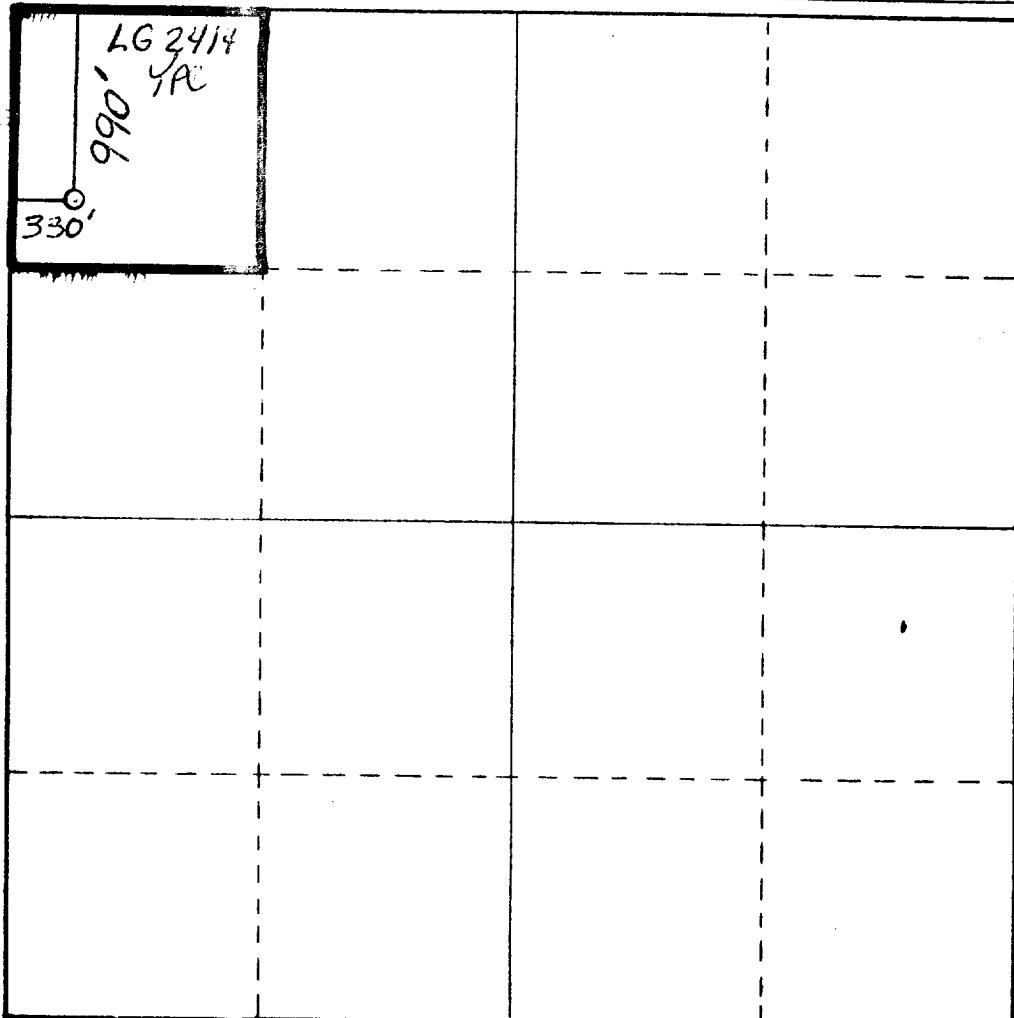
Operator Yates Petroleum Corporation			Lease Chalupa "AAD" State		Well No. 3
Unit Letter D	Section 13	Township 14S	Range 33E	County Lea	
Actual Footage Location of Well: <div style="display: flex; justify-content: space-between;"> 990 feet from the North line and 330 feet from the West line </div>					
Ground Level Elev. 4184.1GL	Producing Formation Bough "C"	Pool SAUNDERS Permo Upper Penn	Dedicated Acreage: 40 Acres		

1. Outline the acreage dedicated to the subject well by colored pencil or hatchure marks on the plat below.
2. If more than one lease is dedicated to the well, outline each and identify the ownership thereof (both as to working interest and royalty).
3. If more than one lease of different ownership is dedicated to the well, have the interests of all owners been consolidated by communitization, unitization, force-pooling, etc?

☐ Yes ☒ No If answer is "yes," type of consolidation _____

If answer is "no," list the owners and tract descriptions which have actually been consolidated. (Use reverse side of this form if necessary.) _____

No allowable will be assigned to the well until all interests have been consolidated (by communitization, unitization, forced-pooling, or otherwise) or until a non-standard unit, eliminating such interests, has been approved by the Commission.



CERTIFICATION

I hereby certify that the information contained herein is true and complete to the best of my knowledge and belief.

Cy Cowan

Name
Cy Cowan
Position
Regulatory Agent
Company
Yates Petroleum Corp.

Date
02/27/85

I hereby certify that the well location shown on this plat was plotted from old notes of actual surveys made by me or under my supervision, and that the same is true and correct to the best of my knowledge and belief.

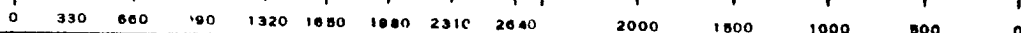
02/27/85

Date Surveyed

Registered Professional Engineer and/or Land Surveyor

Certificate No.

3640



RECEIVED

FEB 28 1985

C.C.D.
HOLDS OFFICE