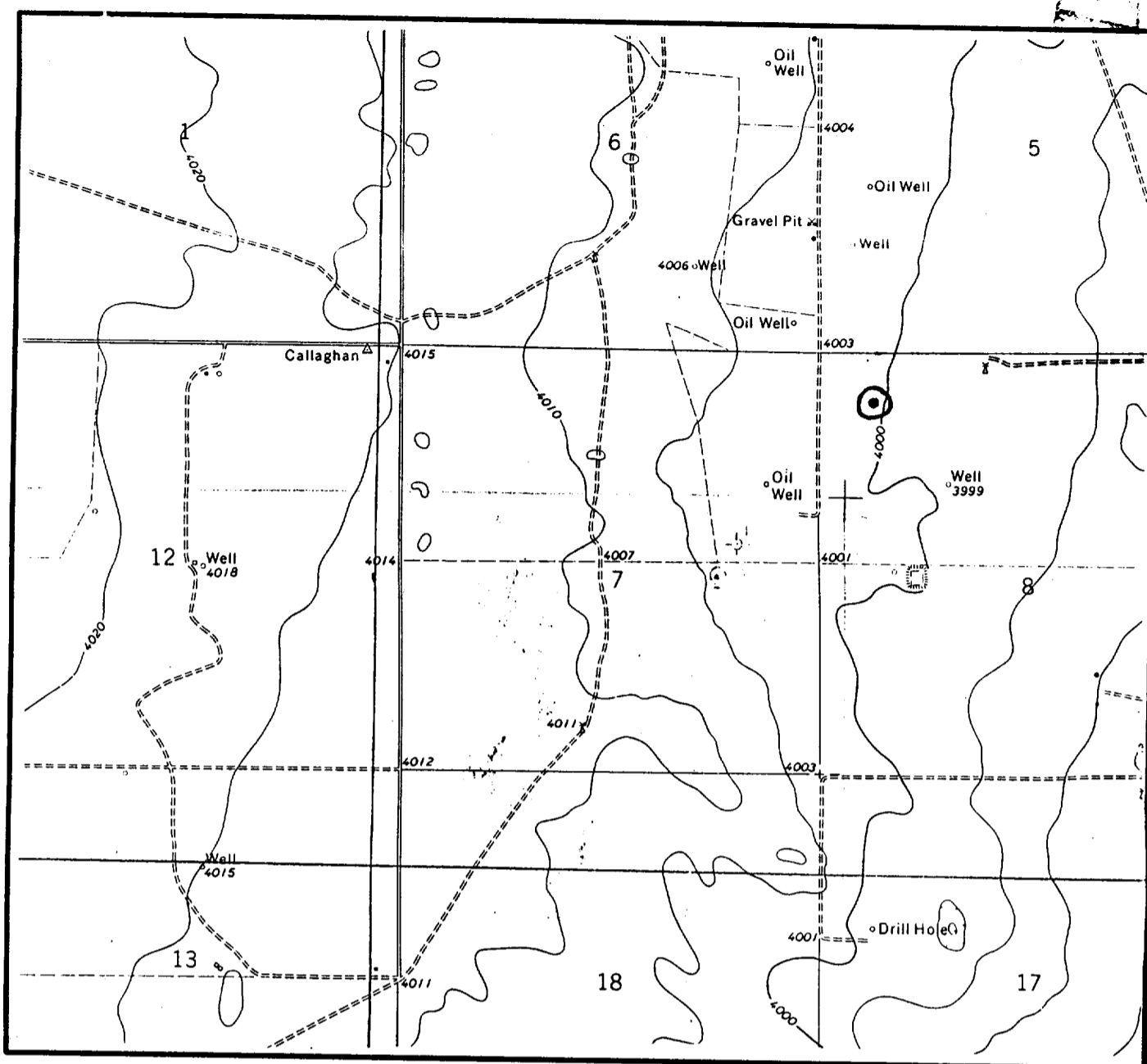


LOCATION & ELEVATION VERIFICATION MAP



SCALE : 1" = 2000'

CONTOUR INTERVAL 5'

SECTION 8 TWP 13-S RGE 36-E

SURVEY NEW MEXICO PRINCIPAL MERIDIAN

COUNTY LEA STATE NM

DESCRIPTION 661' FNL & 659' FWL

ELEVATION 4001'

OPERATOR SABA ENERGY OF TEXAS, INC.

LEASE MORRIS #1

U.S.G.S. TOPOGRAPHIC MAP

TATUM SOUTH, NEW MEXICO

SCALED LAT. N 33°12'41"

LONG. W 103°19'56"



This location has been very carefully staked on the ground according to the best official survey records, maps, and other data available to us.
Review this plat and notify us immediately of any possible discrepancy.

TOPOGRAPHIC LAND SURVEYORS

Surveying & Mapping for the Oil & Gas Industry

1307 N. HOBART
PAMPA, TX. 79065
(800) 658-6382

6709 N. CLASSEN BLVD.
OKLAHOMA CITY, OK. 73116
(800) 654-3219

2903 N. BIG SPRING
MIDLAND, TX. 79705
(800) 767-1653

