

30-025-29331

STATE OF NEW MEXICO
ENERGY AND MINERALS DEPARTMENT

NO. OF COPIES RECEIVED	
DISTRIBUTION	
SANTA FE	
FILE	
U.S.G.S.	
LAND OFFICE	
OPERATOR	

OIL CONSERVATION DIVISION
P. O. BOX 2088
SANTA FE, NEW MEXICO 87501

Form C-101
Revised 10-1-78

5A. Indicate Type of Lease
STATE ☒ FEE ☐

5. State Oil & Gas Lease No.
LG-2265

APPLICATION FOR PERMIT TO DRILL, DEEPEN, OR PLUG BACK

1a. Type of Work
b. Type of Well DRILL ☒ DEEPEN ☐ PLUG BACK ☐
OIL WELL ☒ GAS WELL ☐ OTHER ☐ SINGLE ZONE ☐ MULTIPLE ZONE ☐

2. Name of Operator
Yates Petroleum Corporation

3. Address of Operator
207 South Fourth Street - Artesia, NM 88210

4. Location of Well
UNIT LETTER F LOCATED 1980 FEET FROM THE North LINE
AND 1980 FEET FROM THE West LINE OF SEC. 11 TWP. 14S RGE. 33E NMPM

19. Proposed Depth
10250'

19A. Formation
Bough C

20. Rotary or C.T.
Rotary

21. Elevations (Show whether DF, KT, etc.)
4197' GR

21A. Kind & Status Plug. Bond
Blanket

21B. Drilling Contractor
McVay Drilling Rig #4

22. Approx. Date Work will start
ASAP

7. Unit Agreement Name

8. Farm or Lease Name
Superior "WA" State

9. Well No.
3

10. Field and Pool, or Wildcat
Under Saunders Permo Penn

12. County
Lea

23. PROPOSED CASING AND CEMENT PROGRAM

SIZE OF HOLE	SIZE OF CASING	WEIGHT PER FOOT	SETTING DEPTH	SACKS OF CEMENT	EST. TOP
17-1/2"	13-3/8"	48# J-55	Approx. 450'	400 sacks	Circulate
12-1/4"	8-5/8"	24# J-55	" 4200'	1300 sacks	400'
7-7/8"	5-1/2"	17# N-80	TD	450 sacks	9200'

We propose to drill a 10250' well and test the Permo-Penn and intermediate formations. Approximately 450' of surface casing will be set and cement circulated. Approximately 4200' of intermediate casing will be set and cement circulated back to about 400'. Production casing will be set to TD and cemented back to approximately 9200'.

MUD PROGRAM: FW gel to 450', native mud to 4200', water/paper to 7500', starch/driskak/KCL to TD.

BOP PROGRAM: BOP's will be installed at the offset and tested daily.

Permit Expires 6 Months From Approval Date Unless Drilling Underway.

IN ABOVE SPACE DESCRIBE PROPOSED PROGRAM: IF PROPOSAL IS TO DEEPEN OR PLUG BACK, GIVE DATA ON PRESENT PRODUCTIVE ZONE AND PROPOSED NEW PRODUCTIVE ZONE. GIVE BLOWOUT PREVENTER PROGRAM, IF ANY.

I hereby certify that the information above is true and complete to the best of my knowledge and belief.
Signed [Signature] Title Regulatory Agent Date July 2, 1985

(This space for State Use)
ORIGINAL SIGNED BY JERRY SEXTON
APPROVED BY DISTRICT 1 SUPERVISOR TITLE DATE
CONDITIONS OF APPROVAL, IF ANY:

JUL - 3 1985

RECEIVED

JUL - 3 1985

12-14
HONOLULU

**NEW MEXICO OIL CONSERVATION COMMISSION
WELL LOCATION AND ACREAGE DEDICATION PLAT**

Form C-102
Supersedes C-128
Effective 1-1-65

All distances must be from the outer boundaries of the Section.

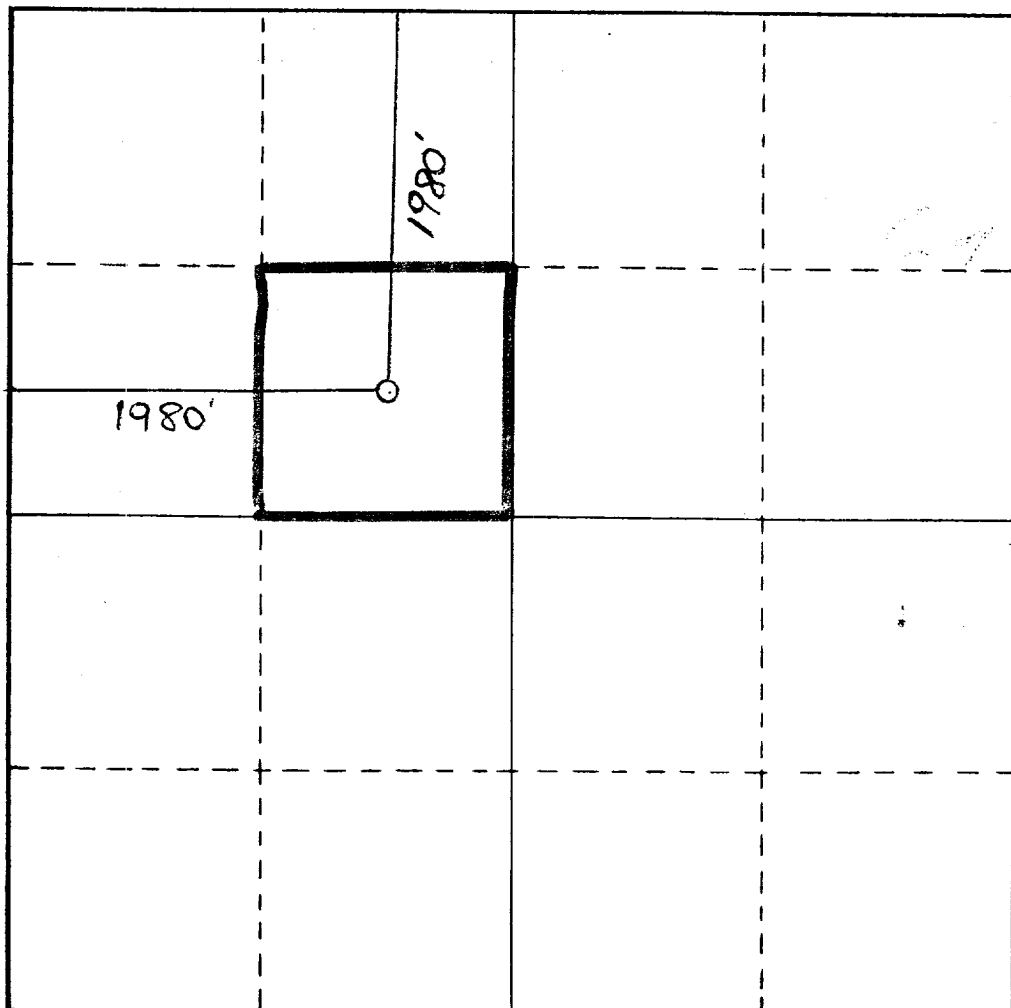
Operator Yates Petroleum Corporation			Lease Superior "WA" State		Well No. 3
Unit Letter F	Section 11	Township 14S	Range 33E	County Lea	
Actual Footage Location of Well:					
1980 feet from the North line and		1980 feet from the West line			
Ground Level Elev. 4197'	Producing Formation Bough C	Pool CANDY SAUNDERS Permo Penn		Dedicated Acreage: 40 Acres	

1. Outline the acreage dedicated to the subject well by colored pencil or hatchure marks on the plat below.
2. If more than one lease is dedicated to the well, outline each and identify the ownership thereof (both as to working interest and royalty).
3. If more than one lease of different ownership is dedicated to the well, have the interests of all owners been consolidated by communitization, unitization, force-pooling, etc?

☐ Yes ☒ No If answer is "yes," type of consolidation _____

If answer is "no," list the owners and tract descriptions which have actually been consolidated. (Use reverse side of this form if necessary.) _____

No allowable will be assigned to the well until all interests have been consolidated (by communitization, unitization, forced-pooling, or otherwise) or until a non-standard unit, eliminating such interests, has been approved by the Commission.



CERTIFICATION

I hereby certify that the information contained herein is true and complete to the best of my knowledge and belief.

Cy Cowan
Name

Cy Cowan

Position

Regulatory Agent

Company

Yates Petroleum Corporation

Date

HERSCHEL L JONES
3640
I hereby certify that the well location shown on this plat was plotted from field notes of actual surveys made by me or under my supervision, and that the same is true and correct to the best of my knowledge and belief.

Date Surveyed

June 30, 1985

Registered Professional Engineer
and/or Land Surveyor

Herschel L Jones
Certificate No.

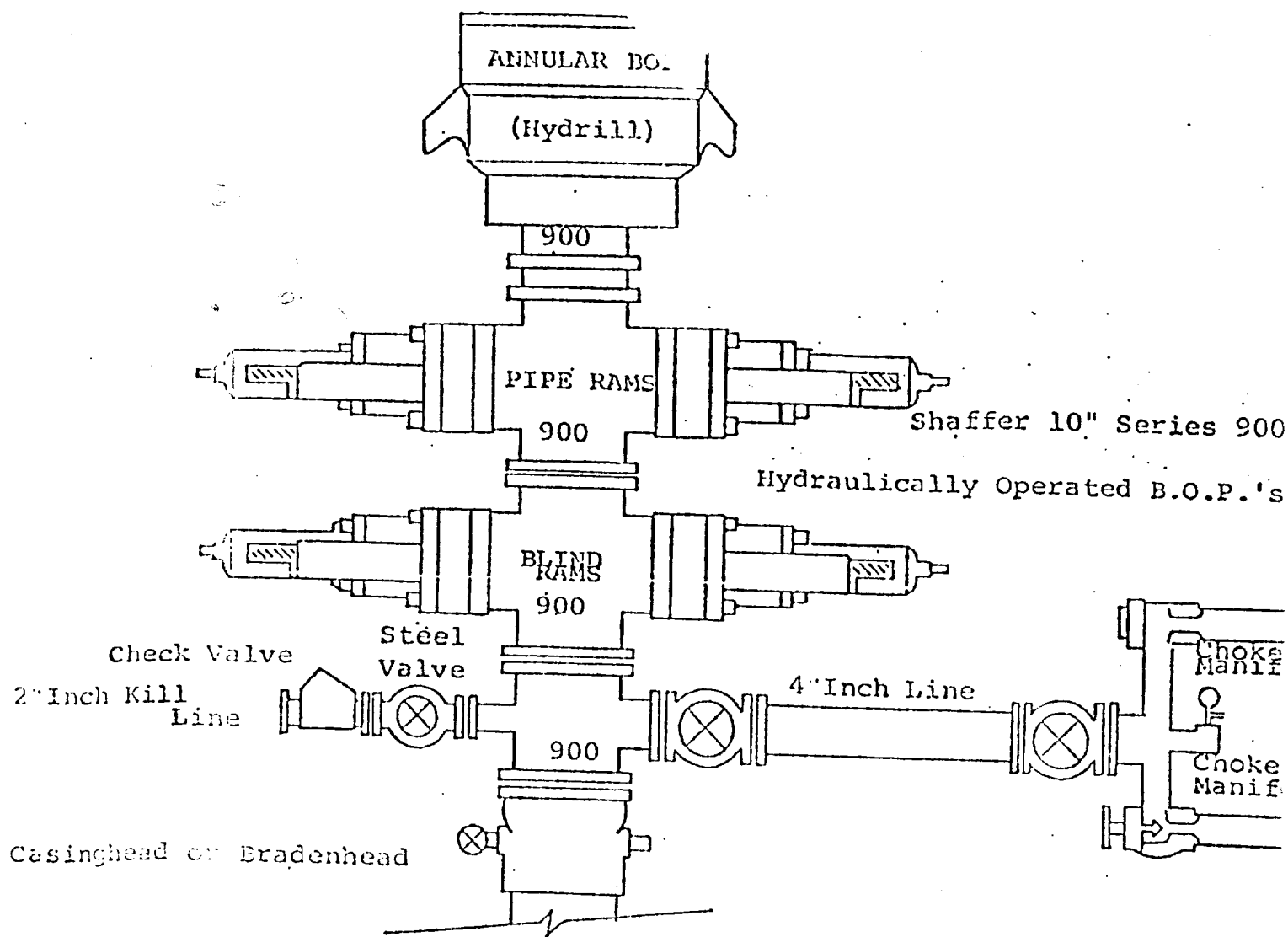
3640



RECEIVED

JUL - 3 1985

POST OFFICE



THE FOLLOWING CONSTITUTE MINIMUM BLOWOUT PREVENTER REQUIREMENTS

1. All preventers to be hydraulically operated with secondary manual control installed prior to drilling out from under casing.
2. Choke outlet to be a minimum of 4" diameter.
3. Kill line to be of all steel construction of 2" minimum diameter.
4. All connections from operating manifolds to preventers to be all steel. hole or tube a minimum of one inch in diameter.
5. The available closing pressure shall be at least 15% in excess of that required with sufficient volume to operate the B.O.P.'s.
6. All connections to and from preventer to have a pressure rating equivalent to that of the B.O.P.'s.
7. Inside blowout preventer to be available on rig floor.
8. Operating controls located a safe distance from the rig floor.
9. Hole must be kept filled on trips below intermediate casing.
10. D. P. float must be installed and used below zone of first gas intrusion.

RECEIVED
JUL 3 1985
HOLERS

RECEIVED
JUL - 3 1985
HOLERS