

WRS COMPLETION REPORT

REISSUES SEC 26 TWP 12S RGE 36E
PI# 30-T-0010 05/08/89 30-025-29496-0000 PAGE 1

NMEX LEA * 990FSL 2310FWL SEC SE SW
STATE COUNTY FOOTAGE SPOT
COX JOHN L WF WFD
OPERATOR WELL CLASS INIT FIN
1 STATE "26"
WELL NO LEASE NAME
3988KB 3962GR TATUM
OPER ELEV FIELD/POOL AREA
API 30-025-29496-0000

LEASE TYPE NO. PERMIT OR WELL I.D. NO.
12/02/1985 06/29/1986 ROTARY GAS
SPUD DATE COMP. DATE TYPE TOOL STATUS
14500 MORROW SHARP DRLG CO 62 RIG SUB 24
PROJ DEPTH PROJ FORM CONTRACTOR
DTD 14104 PB 12830 FM/TD DEVONIAN
DRILLERS T.D. LOG T.D. PLUG BACK TD OLD T.D. FORM T.D.

LOCATION DESCRIPTION

2 MI SE TATUM, NM

WELL IDENTIFICATION/CHANGES

FIELD CHGD FROM WILDCAT
FIELD CHGD FROM UNNAMED
PROJ FM CHGD FROM DEVONIAN

CASING/LINER DATA

CSG 13 3/8 @ 525 W/ 450 SACKS
CSG 8 5/8 @ 4945 W/ 1400 SACKS
CSG 5 1/2 @ 14104 W/ 1570 SACKS

TUBING DATA

TBG 2 7/8 AT 12507

INITIAL POTENTIAL

IPF 30BCPD 750.0MCFD 12/64CK 24HRS
MORROW PERF W/ 10/IT 12674-12696
PERF 12674-12696
ACID 12674-12696 5000GALS
MORFLO
TP 1200
P/L CON WARREN PETROLEUM CORP
FIELD /RESERVOIR
/MORROW

CONTINUED IC# 300257056985

REISSUES
PI# 30-T-0010 05/08/89 SEC 26 TWP 12S RGE 36E
30-025-29496-0000 PAGE 2

COX JOHN L
1 STATE "26" WF WFD

INITIAL POTENTIAL

BHT NOT RPTD
GTY (GAS)-NO DETAILS

| TYPE | FORMATION | LTH | TOP | DEPTH/SUB | BSE | DEPTH/SUB |
|------|-----------|-----|-------|-----------|-----|-----------|
| LOG | RUSTLER | | 2215 | 1773 | | |
| LOG | YATES | | 3115 | 873 | | |
| LOG | SN ANDRS | | 4503 | -515 | | |
| LOG | TUBB | | 7392 | -3404 | | |
| LOG | WOLFCAMP | | 9612 | -5624 | | |
| LOG | CANYON | | 10907 | -6919 | | |
| LOG | STRAWN | | 11240 | -7252 | | |
| LOG | ATOKA | | 12046 | -8058 | | |
| LOG | MSSP | | 13091 | -9103 | | |
| LOG | WOODFORD | | 13777 | -9789 | | |
| LOG | DEVONIAN | | 13883 | -9895 | | |

SUBSEA MEASUREMENTS FROM KB

FORMATION TEST DATA

DST 1 9886- 9921 WOLFCAMP PKRFLR
REC 30.0 FT MUD

DST 2 12610-12686 ATOKA S
OVERLAPS MORROW
REC 1000.0 FT OCWCUSH
INIT OP 30M IFP 842
FINAL OP 1H FFP 1079
ISIP 5326 1H FSIP 5326 2H

DST 3 13900-13992 DEVONIAN PKRFLR
REC 19.0 BBL WCUSH 9.0 BBL WCM
REC 37.0 BBL MUD
INIT OP 30M IFP 961 FFP 864
ISIP 4951 1H

PRODUCTION TEST DATA

DEVONIAN PERF W/ 17/IT 13940-13990
PERF 13940-13990
ACID 13940-13990 50GALS
15%

CONTINUED

REISSUES
PI# 30-T-0010 05/08/89 SEC 26 TWP 12S RGE 36E
30-025-29496-0000 PAGE 3

COX JOHN L
1

STATE "26"

WF WFD

PRODUCTION TEST DATA

ACID 13940-13990 5000GALS
RE-ACID 20%
SWBD W/NS

DEVONIAN PERF W/ 10/IT 13958-13974
PERF 13958-13974
ACID 13958-13974 2000GALS
20%
BRPG @12830 13958-13990
SWBD W/NS

LOGS AND SURVEYS /INTERVAL,TYPE/

LOGS
LOGS

CNL
LDT

DLL

BHCS

DRILLING PROGRESS DETAILS

COX JOHN L
BOX 2217
MIDLAND, TX 79702
915-682-9435
11/12 LOC/1985/
12/03 DRLG 460
12/11 4945 TD, RNG CSG
12/17 DRLG 7060
12/27 DRLG 10054
12/30 DRLG 10657
01/07 DRLG 12292
01/14 DRLG 13065
01/20 DRLG 13933
01/22 13992 TD, PREP DST #3
01/28 14104 TD, WOCT
03/12 14104 TD, PB 12830, PREP ACID
03/18 14104 TD, PB 12830, TSTG
06/20 14104 TD, PB 12830, TSTG
07/21 TD REACHED 01/24/86 RIG REL 01/25/86
14104 TD, PB 12830
COMP 6/29/86, IPF 750 MCFG, 30 BCPD,
12/64 CK, GTY (GAS) (NR),
FTP 1200
PROD ZONE - MORROW 12674-12696

CONTINUED

REISSUES
PI# 30-T-0010 05/08/89 SEC 26 TWP 12S RGE 36E
30-025-29496-0000 PAGE 4

COX JOHN L
1

STATE "26"

WF WFD

DRILLING PROGRESS DETAILS

| | |
|-------|----------------------------------------------------------------------------------------------------|
| 07/21 | NO CORES, THREE DSTS RPTD MORROW DISCOVERY - NEW FIELD |
| 11/13 | FIELD DESIGNATED TATUM REISSUED TO CORRECT FIELD, DISC STMT REPLACEMENT FOR CT ISSUED 8/4/86 |
| 05/03 | REISSUED TO CORRECT PROJ FM, DST STMT & ADD DSTS REPLACEMENT FOR CT ISSUED 11/14/86 |

**NEW MEXICO OIL CONSERVATION COMMISSION
WELL LOCATION AND ACREAGE DEDICATION PLAT**

Form C-102
Supersedes C-128
Effective 1-1-65

All distances must be from the outer boundaries of the Section.

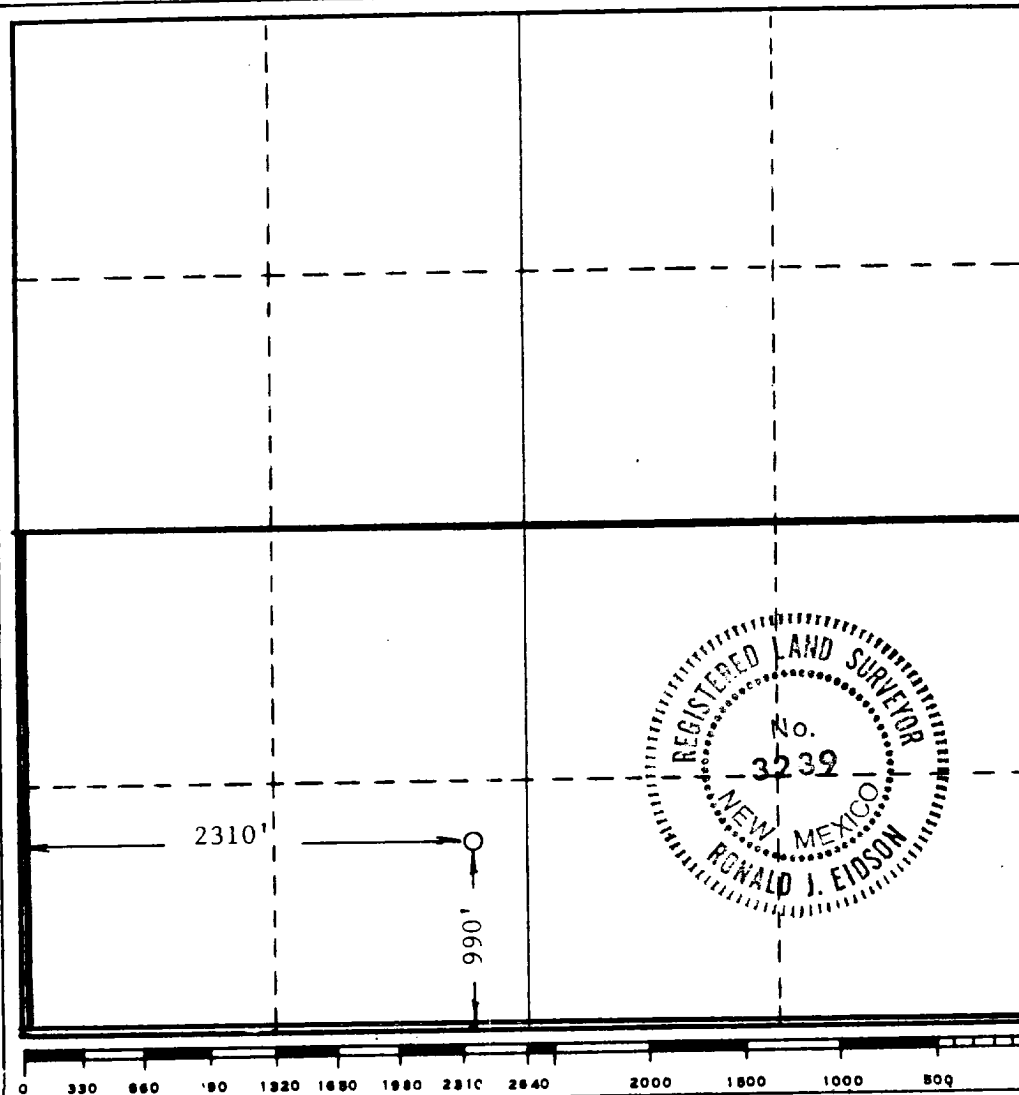
| | | | | | |
|-------------------------------------------------------------------------------------------------------------------------------|--------------------------------------|-----------------------------|--------------------------|----------------------------------------|----------------------|
| Operator John L. Cox | | | Lease State 26 | | Well No. 1 |
| Unit Letter N | Section 26 | Township 12 South | Range 36 East | County Lea | |
| Actual Footage Location of Well: 990 feet from the South line and 2310 feet from the West line | | | | | |
| Ground Level Elev. 3961.8 | Producing Formation MORROW | Pool | | Dedicated Acreage: 320 Acres | |

1. Outline the acreage dedicated to the subject well by colored pencil or hachure marks on the plat below.
2. If more than one lease is dedicated to the well, outline each and identify the ownership thereof (both as to working interest and royalty).
3. If more than one lease of different ownership is dedicated to the well, have the interests of all owners been consolidated by communitization, unitization, force-pooling, etc?

☒ Yes ☐ No If answer is "yes," type of consolidation Communitization

If answer is "no," list the owners and tract descriptions which have actually been consolidated. (Use reverse side of this form if necessary.) _____

No allowable will be assigned to the well until all interests have been consolidated (by communitization, unitization, forced-pooling, or otherwise) or until a non-standard unit, eliminating such interests, has been approved by the Commission.



CERTIFICATION

I hereby certify that the information contained herein is true and complete to the best of my knowledge and belief.

MARTHA WITTENBACH

Name
PRODUCTION MANAGER

Position
JOHN L. COX

Company
JULY 16, 1986

Date
Martha Wittenbach

I hereby certify that the well location shown on this plat was plotted from field notes of actual surveys made by me or under my supervision, and that the same is true and correct to the best of my knowledge and belief.

Date Surveyed
11-5-85

Registered Professional Engineer
and of Land Surveyor
Ronald J. Eidson

Certificate No. **JOHN W. WEST, 876**
RONALD J. EIDSON, 3239