

**NEW MEXICO OIL CONSERVATION COMMISSION  
WELL LOCATION AND ACREAGE DEDICATION PLAT**

Form C-102  
Supersedes C-128  
Effective 1-1-85

All distances must be from the outer boundaries of the Section.

Operator <b>YATES PETROLEUM CORPORATION</b>			Lease <b>SUPERIOR "WA" STATE</b>		Well No. <b>4</b>
Unit Letter <b>H</b>	Section <b>11</b>	Township <b>14S</b>	Range <b>33E</b>	County <b>Lea</b>	

Actual Footage Location of Well:

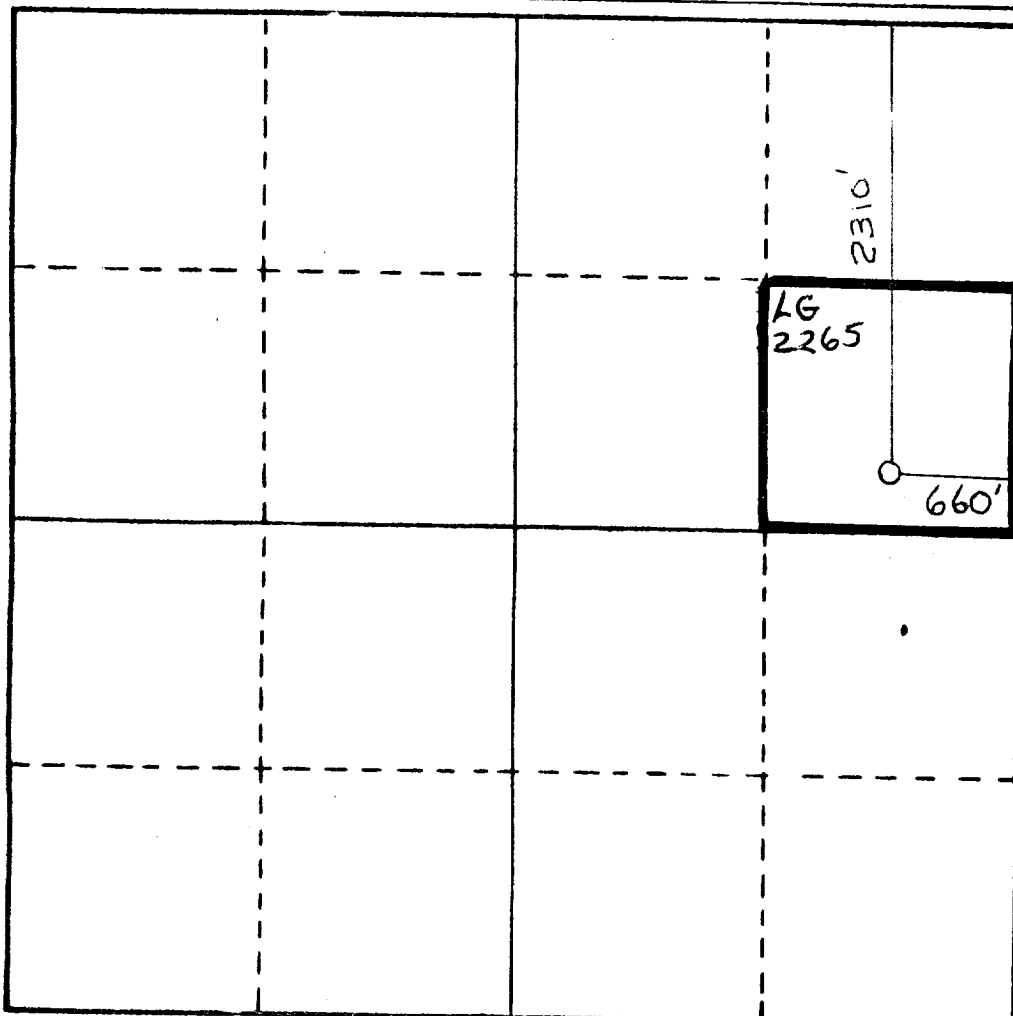
2310	feet from the	North	line and	660	feet from the	East	line
Ground Level Elev. <b>4188'</b>	Producing Formation <b>Bought 'C'</b>		Pool <b>SAUNDERS Permo/PENN</b>		Dedicated Acreage <b>40</b>		

1. Outline the acreage dedicated to the subject well by colored pencil or hatchure marks on the plat below.
2. If more than one lease is dedicated to the well, outline each and identify the ownership thereof (both as to working interest and royalty).
3. If more than one lease of different ownership is dedicated to the well, have the interests of all owners been consolidated by communitization, unitization, force-pooling, etc?

☐ Yes ☒ No If answer is "yes," type of consolidation \_\_\_\_\_

If answer is "no," list the owners and tract descriptions which have actually been consolidated. (Use reverse side of this form if necessary.) \_\_\_\_\_

No allowable will be assigned to the well until all interests have been consolidated (by communitization, unitization, forced-pooling, or otherwise) or until a non-standard unit, eliminating such interests, has been approved by the Commission.



**CERTIFICATION**

I hereby certify that the information contained herein is true and complete to the best of my knowledge and belief.

*Cy Cowan*  
Name  
Cy Cowan

Position  
Regulatory Agent

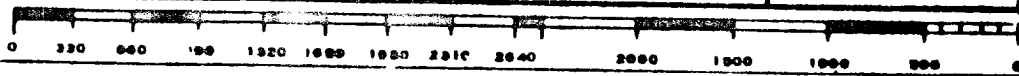
Company  
Yates Petroleum Corporation

Date  
November 14, 1985

I hereby certify that the well location shown on this plat was plotted from field notes of actual surveys made by me or under my supervision, and that the same is true and correct to the best of my knowledge and belief.

November 13, 1985

Date Surveyed  
\_\_\_\_\_  
Registered Professional Engineer and/or Geologist  
**HERSCHEL L JONES**  
3616  
Certification No. \_\_\_\_\_  
**NEW MEXICO**  
**REGISTERED LAND SURVEYOR**  
**40**



RECEIVED  
NOV 15 1985  
O.C.D.  
HOBBS OFFICE