

STATE OF NEW MEXICO  
ENERGY AND MINERALS DEPARTMENT

OIL CONSERVATION DIVISION  
P. O. BOX 2088  
SANTA FE, NEW MEXICO 87501

Form C-101  
Revised 10-1-78

NO. OF COPIES RECEIVED	
DISTRIBUTION	
SANTA FE	
FILE	
U.S.G.S.	
LAND OFFICE	
OPERATOR	

5A. Indicate Type of Lease  
STATE ☒ FEE ☐  
5. State Oil & Gas Lease No.  
E-2064

APPLICATION FOR PERMIT TO DRILL, DEEPEN, OR PLUG BACK

1a. Type of Work b. Type of Well OIL WELL <input type="checkbox"/> GAS WELL <input checked="" type="checkbox"/> OTHER <input type="checkbox"/> SINGLE ZONE <input checked="" type="checkbox"/> MULTIPLE ZONE <input type="checkbox"/>				2. Name of Operator Exxon Corporation		7. Unit Agreement Name	
3. Address of Operator Box 1600, Midland, Texas 79702				8. Farm or Lease Name South Four Lakes Unit 1		9. Well No. 8	
4. Location of Well UNIT LETTER <u>Lot 1 A</u> LOCATED <u>660</u> FEET FROM THE <u>North</u> LINE AND <u>990</u> FEET FROM THE <u>East</u> LINE OF SEC. <u>2</u> TWP. <u>12S</u> RGE. <u>34E</u> NMPM				10. Field and Pool, or Wildcat Four Lakes Devonian		11. County Lea	
19. Proposed Depth 13,000				19A. Formation Devonian		20. Rotary or C.T. Rotary	
21. Elevations (Show whether DF, RT, etc.) 4150' GR		21A. Kind & Status Plug. Band Blanket		21B. Drilling Contractor Unknown		22. Approx. Date Work will start 12-15-85	

PROPOSED CASING AND CEMENT PROGRAM

SIZE OF HOLE	SIZE OF CASING	WEIGHT PER FOOT	SETTING DEPTH	SACKS OF CEMENT	EST. TOP
17 1/2"	13 3/8"	68	400'	225	Surf.
11"	8 5/8"	24	4200'	200	3200'
7 7/8"	5 1/2"	15.5, 17	12900'	1000	3800'

BOP Program

Casing	Type	WP
13 3/8	SA Diverter	3000 psi
8 5/8	RRA	3000 psi

Mud Program

Interval	Type	Density	FV	pH
0-400'	FW	8.3 - 8.5	28	N.C
400-4200'	SBW	10.0+	28-30	10-11
4200-9500'	FW	8.3-8.7	28-30	10-11
9500-TD	FWM	8.5-8.8	35-45	10-11

Diagrammatic sketch and specifications of BOP are attached.

Permit Expires 6 Months From Approval  
Date Unless Drilling Underway.

IN ABOVE SPACE DESCRIBE PROPOSED PROGRAM; IF PROPOSAL IS TO DEEPEN OR PLUG BACK, GIVE DATA ON PRESENT PRODUCTIVE ZONE AND PROPOSED NEW PRODUCTIVE ZONE. GIVE BLOWOUT PREVENTER PROGRAM, IF ANY.

I hereby certify that the information above is true and complete to the best of my knowledge and belief.

Signed Edgar Runkel Title Unit Head Date 12-2-85

(This space for State Use)  
ORIGINAL SIGNED BY JERRY SEXTON  
DISTRICT I SUPERVISOR

APPROVED BY \_\_\_\_\_ TITLE \_\_\_\_\_

DATE \_\_\_\_\_

CONDITIONS OF APPROVAL, IF ANY:

DEC 5 - 1985

RECEIVED

DEC 4 - 1985

G.P.O.  
HOBBS OFFICE

Exxon Lse. No. \_\_\_\_\_ MEXICO OIL CONSERVATION COMMISSION  
State Lse. No. \_\_\_\_\_ WELL LOCATION AND ACREAGE DEDICATION PLAT  
Federal Lse. No. \_\_\_\_\_ All distances must be from the outer boundaries of the Section.

Form C-102  
Supersedes C-128  
Effective 1-1-65

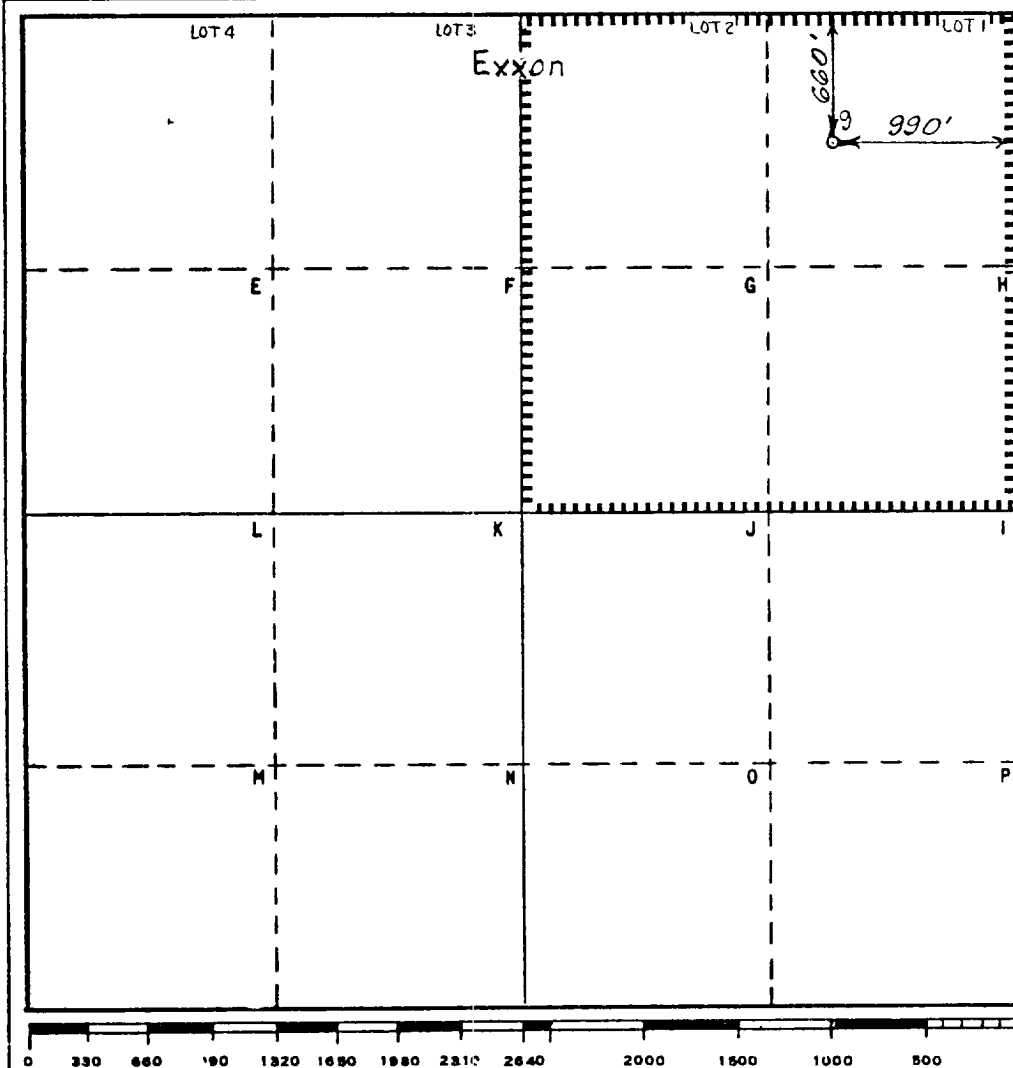
Operator Exxon Corporation		Lease South Four Lakes Unit 1		Well No. 8
Unit Letter Lot 1	Section 2	Township 12 S	Range 34 E	County Lea
Actual Footage Location of Well: 660 feet from the North line and 990 feet from the East line				
Ground Level Elev. 4150'	Producing Formation Devonian	Pool Four Lakes	Dedicated Acreage: 160 Acres	

1. Outline the acreage dedicated to the subject well by colored pencil or hachure marks on the plat below.
2. If more than one lease is dedicated to the well, outline each and identify the ownership thereof (both as to working interest and royalty).
3. If more than one lease of different ownership is dedicated to the well, have the interests of all owners been consolidated by communitization, unitization, force-pooling, etc?

☐ Yes ☐ No If answer is "yes," type of consolidation \_\_\_\_\_

If answer is "no," list the owners and tract descriptions which have actually been consolidated. (Use reverse side of this form if necessary.) \_\_\_\_\_

No allowable will be assigned to the well until all interests have been consolidated (by communitization, unitization, forced-pooling, or otherwise) or until a non-standard unit, eliminating such interests, has been approved by the Commission.



#### CERTIFICATION

I hereby certify that the information contained herein is true and complete to the best of my knowledge and belief.

Name  
*Edgar Runkel*

Position  
UNIT HEAD

Company Exxon Corporation  
Box 1600 Midland, Texas

Date  
12-2-85

I hereby certify that the well location shown on this plat was plotted from field notes of actual surveys made by me or under my supervision, and that the same is true and correct to the best of my knowledge and belief.

Date Surveyed  
10-25-85

Registered Professional Engineer  
and/or Land Surveyor

*Bruce R. Pennell*

Certificate No.  
# 9062

10 Miles N.W. of Tatum, New Mexico

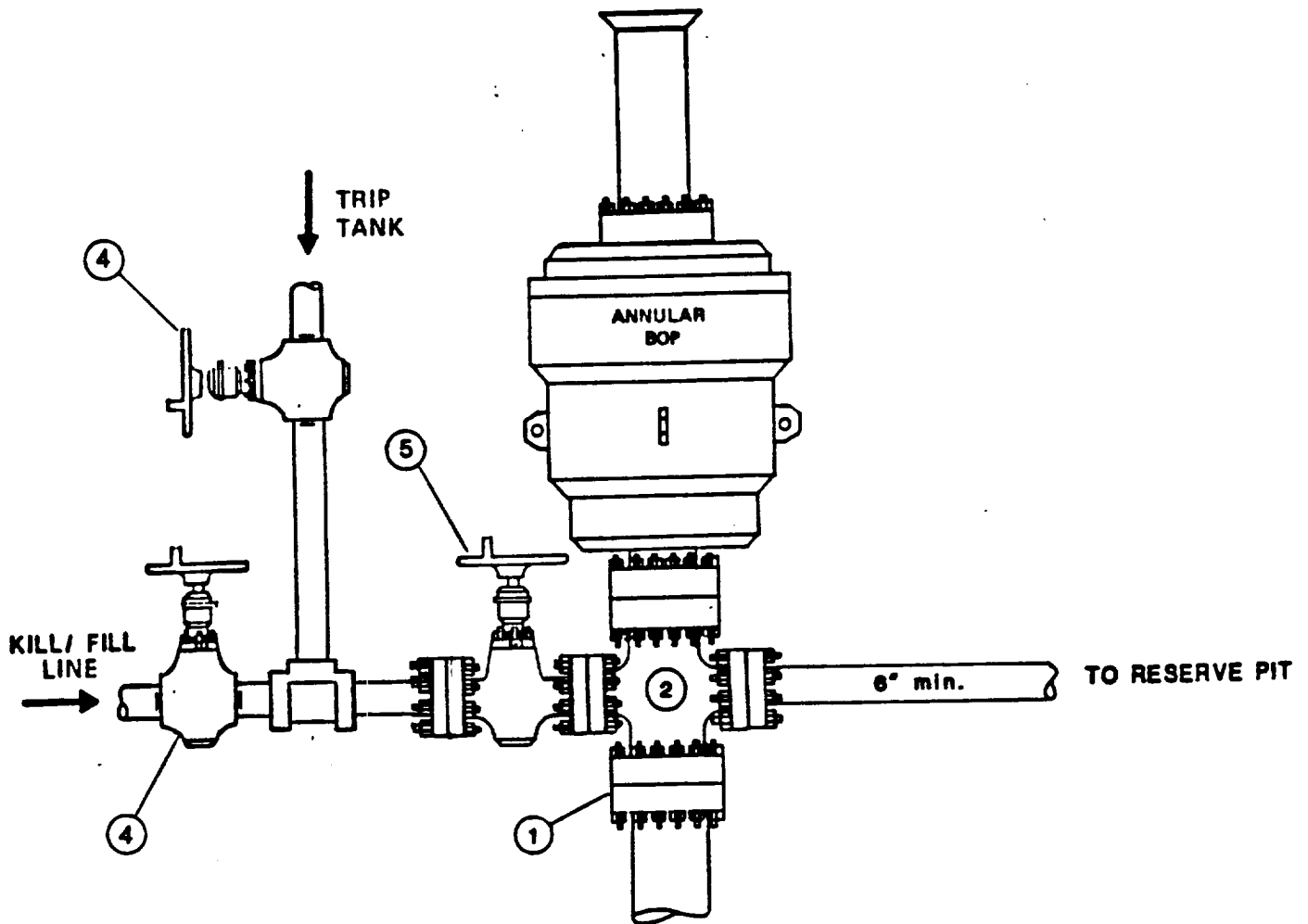
C.E. Sec. File No. W-A-9155

RECEIVED

DEC 4 - 1985

G.C.D.  
HOBBS OFFICE

## TYPE SA DIVERTER



RECEIVED

DEC 4 - 1985

O.D.D.  
HOBBS OFFICE

## **COMPONENT SPECIFICATIONS**

### **Type SA Diverter**

1. Wellhead or BOP Companion flange - screwed or welded to casing.
2. Flanged Drilling Spool.
3. Diverter line minimum size 6" internal diameter, steel pipe. Diverter lines must be securely anchored. Only flanged or welded connections can be used for pipe joint connections and 45° or 90° ells must not be installed on the end of diverter lines to direct flow downward.
4. Flanged or screwed gate or plug valve -- 2" minimum nominal diameter and 2000 psi minimum working pressure.
5. Full opening flanged gate or plug valve -- 2" minimum -- 2000 psi minimum working pressure.

RECEIVED

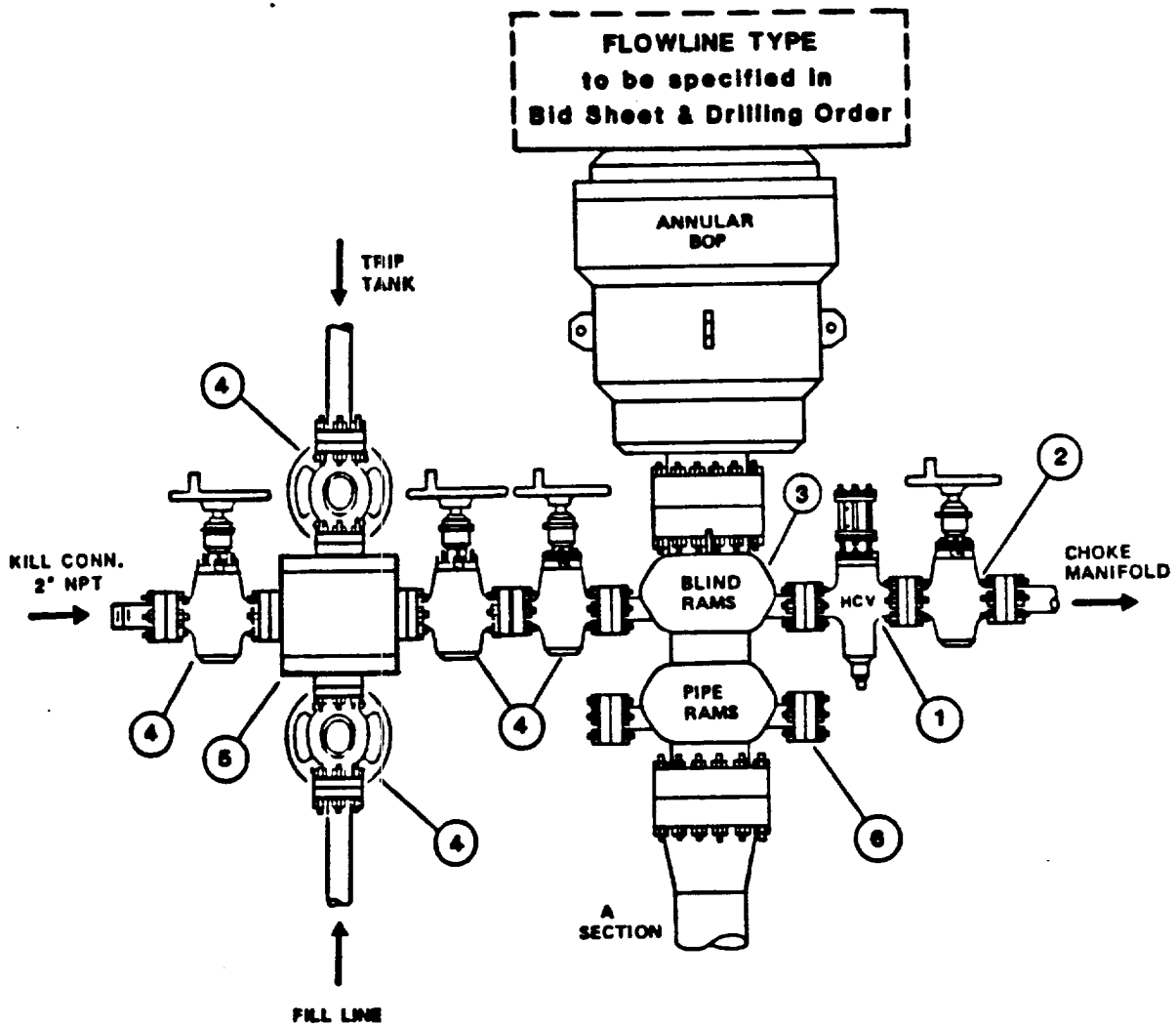
DEC 4 - 1985

O.C.D.  
HODES OFFICE



# TYPE RRA BOP STACK

## THREE PREVENTERS



RECEIVED

DEC 4 - 1985

C.C.D.  
HOBBS OFFICE

## **COMPONENT SPECIFICATIONS**

### **Type RRA BOP Stack**

1. Flanged hydraulically controlled gate valve -- 3" minimum nominal diameter -- same working pressure as BOP stack.
2. Flanged plug gate valve -- 3" minimum nominal diameter -- same working pressure as BOP stack.
3. BOP outlets must be 2" minimum nominal diameter for kill line and 3" minimum diameter for choke line.
4. Flanged plug or gate valve -- 2" minimum nominal diameter -- same working pressure as BOP stack.
5. Flanged cross or two (2) flanged tees.
6. Any BOP side outlet flange, located below the bottom ram, must be equipped with a blind flange.

NOTE: Each BOP stack must have separate side outlet connections for kill and choke lines, unless specific approval for a single side-outlet is obtained from the Exxon Division Drilling Manager prior to rig-up. Such approval will not be granted unless the equipment arrangement conforms to the specifications shown on pages 14 and 15 of this Section.

RECEIVED

DEC 4 - 1985

O.C.D.  
HOBBS OFFICE

11