

42412

STATE OF NEW MEXICO
ENERGY AND MINERALS DEPARTMENT

OIL CONSERVATION DIVISION

P. O. BOX 2088

SANTA FE, NEW MEXICO 87501

Form C-102
Revised 10-1-78

All distances must be from the outer boundaries of the Section.

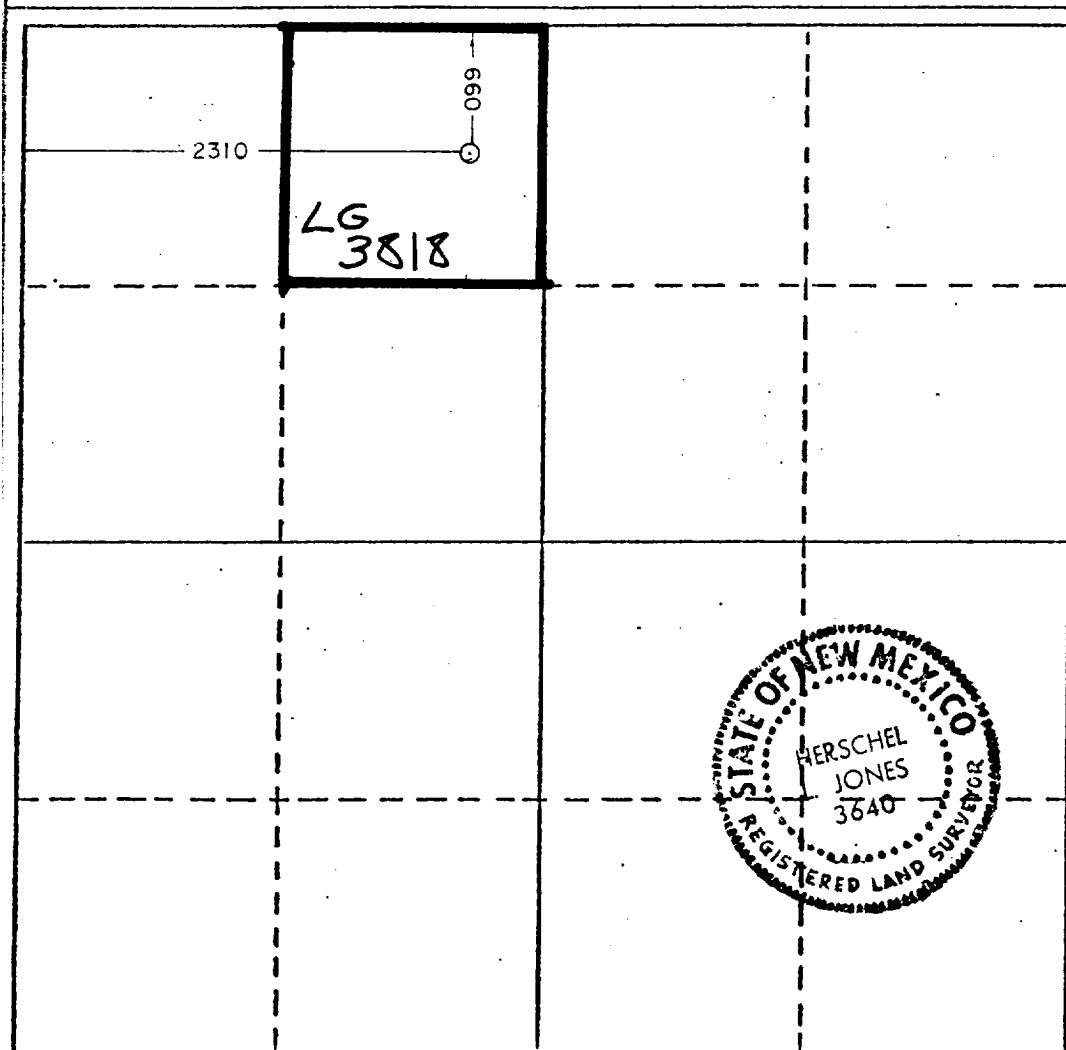
Operator YATES PETROLEUM CORPORATION		Lease PYRO "ABK" STATE		Well No. 2
Unit Letter C	Section 33	Township 13 South	Range 33 East	County Lea
Actual Footage Location of Well: 660 feet from the North line and 2310 feet from the West line				
Ground Level Elev. 4247.5	Producing Formation Bough D	Pool LAZY J	Dedicated Acreage: 40 Acres	

1. Outline the acreage dedicated to the subject well by colored pencil or hatchure marks on the plat below.
2. If more than one lease is dedicated to the well, outline each and identify the ownership thereof (both as to working interest and royalty).
3. If more than one lease of different ownership is dedicated to the well, have the interests of all owners been consolidated by communitization, unitization, force-pooling, etc?

☐ Yes ☒ No If answer is "yes," type of consolidation _____

If answer is "no," list the owners and tract descriptions which have actually been consolidated. (Use reverse side of this form if necessary.) _____

No allowable will be assigned to the well until all interests have been consolidated (by communitization, unitization, forced-pooling, or otherwise) or until a non-standard unit, eliminating such interests, has been approved by the Division.



CERTIFICATION

I hereby certify that the information contained herein is true and complete to the best of my knowledge and belief.

Cy Cowan
Name
Cy Cowan

Position
Regulatory Agent

Company
Yates Petroleum Corporation

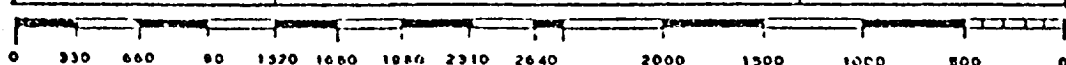
Date
December 23, 1985

I hereby certify that the well location shown on this plat was plotted from field notes of actual surveys made by me or under my supervision, and that the same is true and correct to the best of my knowledge and belief.

Date Surveyed
December 5 1985

Registered Professional Engineer
and/or Land Surveyor

[Signature]
Certificate No.
3640



RECEIVED
DEC 23 1985
C-103
HOBBS OFFICE