

30-025-29827

NO. OF COPIES RECEIVED	
DISTRIBUTION	
SANTA FE	
FILE	
U.S.G.S.	
LAND OFFICE	
OPERATOR	

NEW MEXICO OIL CONSERVATION COMMISSION

Form C-101
Revised 1-1-65

5A. Indicate Type of Lease STATE <input checked="" type="checkbox"/> FEE <input type="checkbox"/>
5. State Oil & Gas Lease No. E-8087
7. Unit Agreement Name
8. Farm or Lease Name Mesa AAF State
9. Well No. 1
10. Field and Pool, or Wildcat Undesignated Lazy J
12. County Lea
19. Proposed Depth 10100'
19A. Formation Bough D
20. Rotary or C.T. Rotary
21. Elevations (Show whether DF, RT, etc.) 4246.5' GR
21A. Kind & Status Plug. Bond Blanket
21B. Drilling Contractor Undesignated
22. Approx. Date Work will start ASAP

APPLICATION FOR PERMIT TO DRILL, DEEPEN, OR PLUG BACK	
1a. Type of Work b. Type of Well OIL WELL <input checked="" type="checkbox"/> GAS WELL <input type="checkbox"/> OTHER <input type="checkbox"/> DEEPEN <input type="checkbox"/> PLUG BACK <input type="checkbox"/>	2. Name of Operator Yates Petroleum Corporation
3. Address of Operator 105 South Fourth Street - Artesia, NM 88210	4. Location of Well UNIT LETTER M LOCATED 990 FEET FROM THE South LINE AND 990 FEET FROM THE West LINE OF SEC. 28 TWP. 13S RGE. 33E NMPM
23.	

PROPOSED CASING AND CEMENT PROGRAM

SIZE OF HOLE	SIZE OF CASING	WEIGHT PER FOOT	SETTING DEPTH	SACKS OF CEMENT	EST. TOP
17-1/2"	13-3/8"	48# H-40	Approx. 466'	400 sacks	Circulate
12-1/4"	8-5/8"	32# K-55	" 4195'	1200 sacks	Circulate
7-7/8"	5-1/2"	17 & 20# N-80	TD	450 sacks	

We propose to drill and test the Bough D and intermediate formations. Approximately 466' of surface casing will be set and cement circulated to shut off gravel and cavings. If commercial, production casing will be run and cemented with adequate cover, perforated and stimulated as needed for production.

MUD PROGRAM: FW gel/LCM from surface to 466', fresh water to 4195', SW gel/starch to TD

BOP PROGRAM: BOP's will be installed at the offset and tested daily.

**Permit Expires 6 Months From Approval
Date Unless Drilling Underway.**

IN ABOVE SPACE DESCRIBE PROPOSED PROGRAM: IF PROPOSAL IS TO DEEPEN OR PLUG BACK, GIVE DATA ON PRESENT PRODUCTIVE ZONE AND PROPOSED NEW PRODUCTIVE ZONE. GIVE BLOWOUT PREVENTER PROGRAM, IF ANY.

I hereby certify that the information above is true and complete to the best of my knowledge and belief.

Signed Ray Cowan Title Regulatory Agent Date Dec. 16, 1986

(This space for State Use)
Orig. Signed by
Paul Kautz
Geologist

APPROVED BY _____ TITLE _____ DATE **DEC 18 1986**

CONDITIONS OF APPROVAL, IF ANY:

RECEIVED
DEC 18 1995
OCD
HOBBS OFFICE

**NEW MEXICO OIL CONSERVATION COMMISSION
WELL LOCATION AND ACREAGE DEDICATION PLAT**

Form C-102
Supersedes C-128
Effective 1-4-65

All distances must be from the outer boundaries of the Section.

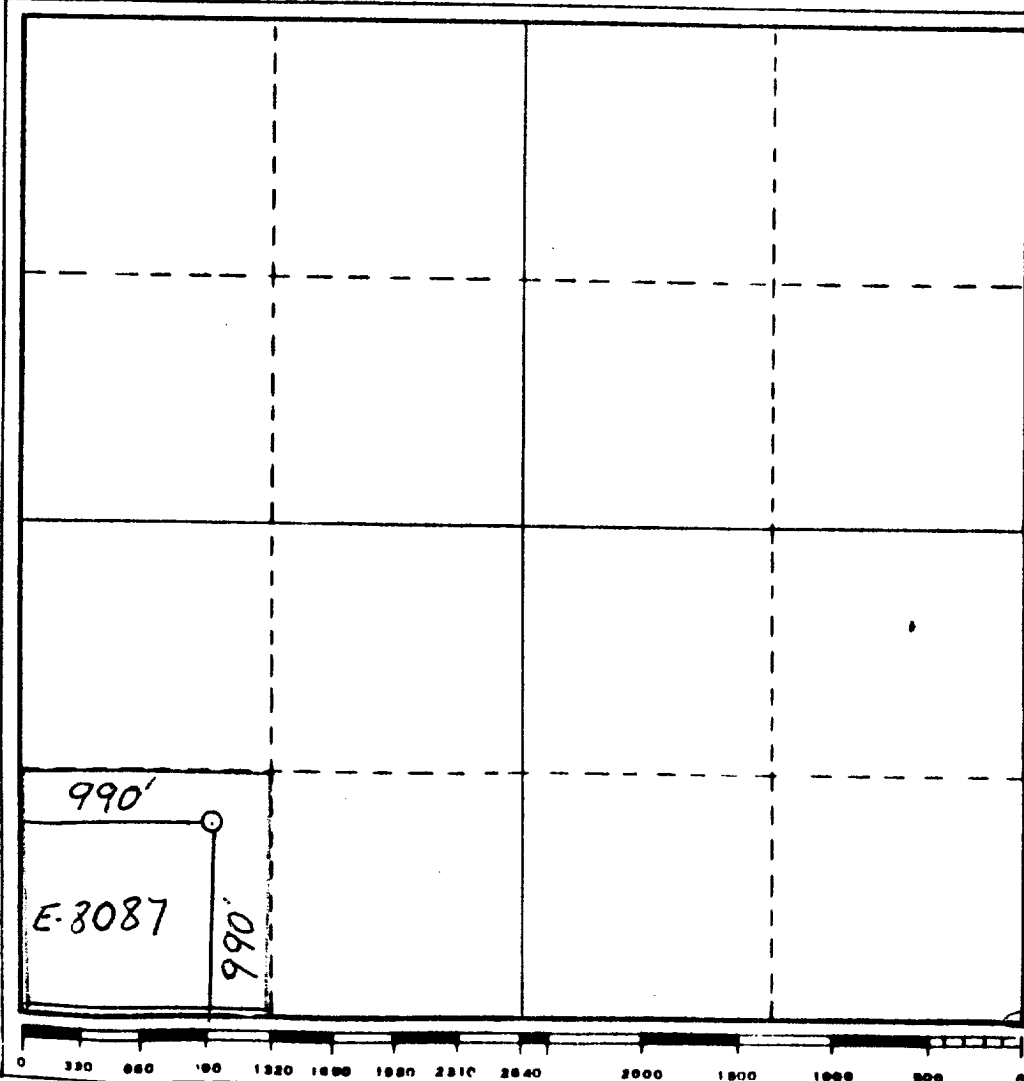
Operator YATES PETROLEUM CORPORATION			Lease MESA AAF STATE		Well No. 1
Unit Letter M	Section 28	Township 13S	Range 33E	County LEA	
Actual Footage Location of Well:					
990	feet from the	South	line and	990	feet from the West line
Ground Level Elev. 4246.5'	Producing Formation Bough D		Pool LAZY J		Dedicated Acreage 40 Acres

1. Outline the acreage dedicated to the subject well by colored pencil or hatchure marks on the plat below.
2. If more than one lease is dedicated to the well, outline each and identify the ownership thereof (both as to working interest and royalty).
3. If more than one lease of different ownership is dedicated to the well, have the interests of all owners been consolidated by communitization, unitization, force-pooling, etc?

☐ Yes ☒ No If answer is "yes," type of consolidation _____

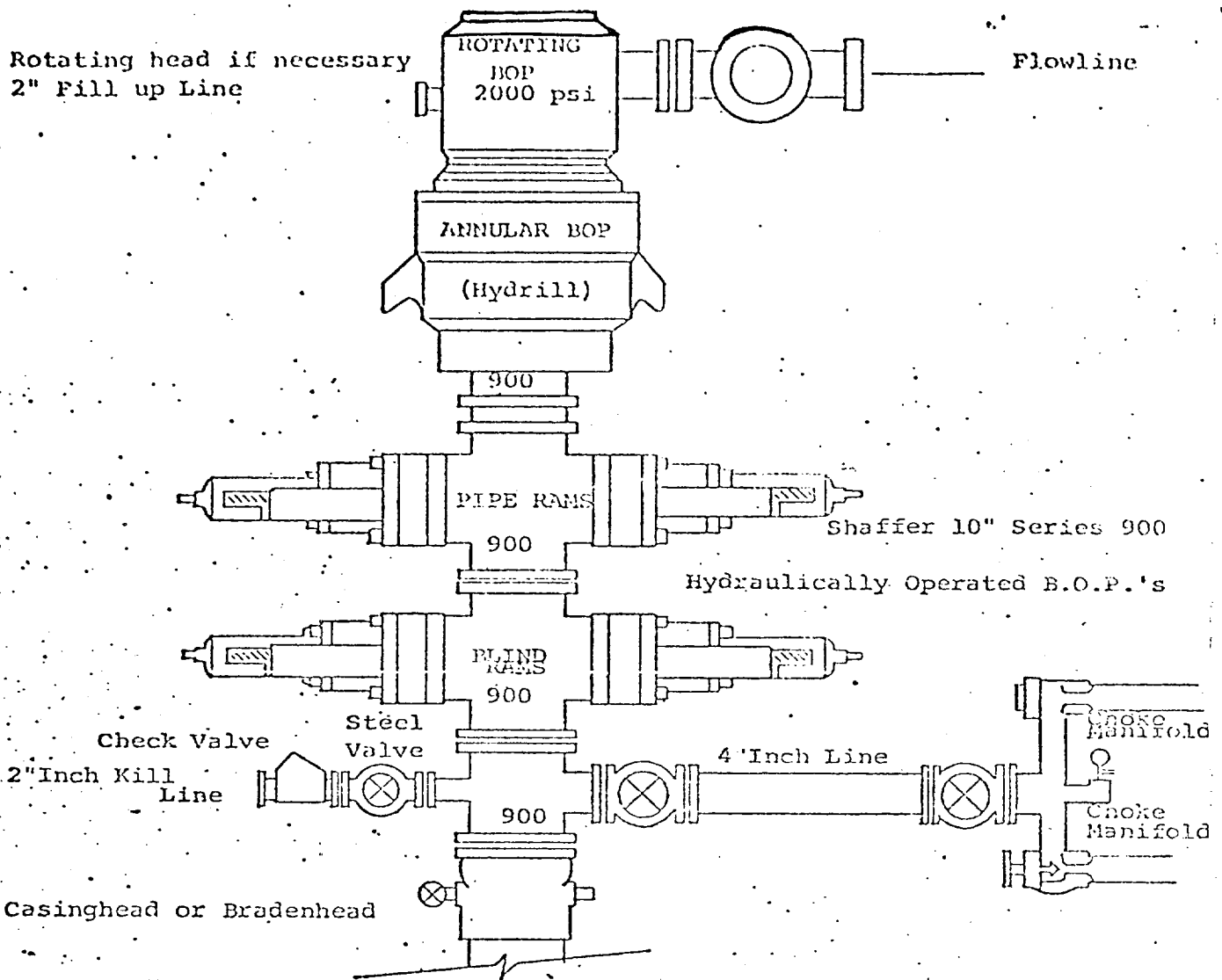
If answer is "no," list the owners and tract descriptions which have actually been consolidated. (Use reverse side of this form if necessary.) _____

No allowable will be assigned to the well until all interests have been consolidated (by communitization, unitization, forced-pooling, or otherwise) or until a non-standard unit, eliminating such interests, has been approved by the Commission.



CERTIFICATION	
I hereby certify that the information contained herein is true and complete to the best of my knowledge and belief.	
<i>Cy Cowan</i>	
Name	Cy Cowan
Position	Regulatory Agent
Company	Yates Petroleum Corporation
Date	Dec. 16, 1986
I hereby certify that the well location shown on this plat was plotted from field notes of actual surveys made by me or under my supervision, and that the same is true and correct to the best of my knowledge and belief.	
Date Surveyed	12-16-86
<div align="center"> </div>	
Certificate No.	3640

RECEIVED
DEC 18 1985
OCD
HOBBS OFFICE



THE FOLLOWING CONSTITUTE MINIMUM BLOWOUT PREVENTER REQUIREMENTS

1. All preventers to be hydraulically operated with secondary manual controls installed prior to drilling out from under casing.
2. Choke outlet to be a minimum of 4" diameter.
3. Kill line to be of all steel construction of 2" minimum diameter.
4. All connections from operating manifolds to preventers to be all steel. hole or tube a minimum of one inch in diameter.
5. The available closing pressure shall be at least 15% in excess of that required with sufficient volume to operate the B.O.P.'s.
6. All connections to and from preventer to have a pressure rating equivalent to that of the B.O.P.'s.
7. Inside blowout preventer to be available on rig floor.
8. Operating controls located a safe distance from the rig floor.
9. Hole must be kept filled on trips below intermediate casing. Operator not responsible for blowouts resulting from not keeping hole full.
10. D. P. float must be installed and used below zone of first gas intrusion.

RECEIVED
DEC 18 1986
OCD
HOBBS OFFICE

DEC 18 1986
HOBBS OFFICE