

## O CONSERVATION DIVISION

P. O. BOX 2088

SANTA FE, NEW MEXICO 87101

30-025-29915

Form C-101  
Revised 10-1-78

CO. OF COMPLETION	
DISTRIBUTION	
SANTA FE	
FILE	
U.S.G.S.	
LAND OFFICE	
OPERATOR	

3A. Indicate Type of Lease
STATE <input checked="" type="checkbox"/> REC <input type="checkbox"/>

3. State Oil & Gas Lease No.  
V-684

## APPLICATION FOR PERMIT TO DRILL, DEEPEN, OR PLUG BACK

Type of Work

Type of Well DRILL ☒ DEEPEN ☐ PLUG BACK ☐  
Oil ☒ GAS WELL ☐ OTHER ☐ SINGLE ZONE ☒ MULTIPLE ZONE ☐Name of Operator  
TEXACO INC.Address of Operator  
P. O. Box 728, Hobbs, New Mexico 88240Location of Well  
UNIT LETTER 0 LOCATED 660 FEET FROM THE South LINE  
1980 FEET FROM THE East LINE OF SEC. 11 TWP. 14-S. REC. 33-E. NMPM

7. Unit Agreement Name

8. Farm or Lease Name  
J.M. Huber St. (NCT-2)9. Well No.  
110. Field and Pool, or Wildcat  
Saunders Permo Upper Penn12. County  
Lea

19. Proposed Depth 10200'	19A. Formation Bough A, B, C	20. Rotary or C.T. Rotary
21A. Kind & Status Plug. Bond Blanket	21B. Drilling Contractor	22. Approx. Date Work will start April 29, 1987

## PROPOSED CASING AND CEMENT PROGRAM

SIZE OF HOLE	SIZE OF CASING	WEIGHT PER FOOT	SETTING DEPTH	SACKS OF CEMENT	EST. TOP
24"	20"	90#	40'	Redimix	Surface
15"	11-3/4"	40#	1740'	1500	Circulate
11"	8-5/8"	24# & 28#	3810'	1750	Circulate
7-7/8"	5-1/2"	17#	10,200	1700	Circulate

## CEMENTING PROGRAM

SURFACE CASING: 1500 sxs Class "H" w/2% Cacl (15.6 ppg, 1.18 cu. ft./sx.).

INTERMEDIATE CASING: 1500 sxs Light Weight with 15# salt, 1/4# flocele (12.7 ppg, 2.1 cu.ft./sx.) followed by 250 sxs Class "H" with 1/4# flocele, (15.6 ppg, 1.18 cu.ft./sx.).

PRODUCTION CASING: 1ST STAGE: 500 sxs Light Weight 1/4# Flocele (12.3 ppg, 2.00 cu. ft./sx.) followed by 200 sacks 50-50 pozmix Class "H", 1/4# Flocele and .8% Halad-9 (13.6 ppg, 1.40 cu. ft./sx.).  
2ND STAGE: 1000 sxs Light Weight with 1/4# flocele (12.3 ppg, 2.00 cu.ft./sx.).  
(DV Tool at approximately 7000').

NOTE: There are no other wells in this 1/4, 1/4 section.

GIVE SPACE DESCRIBE PROPOSED PROGRAM IF PROPOSAL IS TO DEEPEN OR PLUG BACK, GIVE DATA ON PRESENT PRODUCTIVE ZONE AND PROPOSED NEW PRODU

I certify that the information above is true and complete to the best of my knowledge and belief.

Signature: J. P. Bulman Title: Dist. Petroleum Engineer Date: 5/1/87

(This space for State Use)

ORIGINAL SIGNED BY JERRY SEXTON

VED BY DISTRICT SUPERVISOR

TITLE

DATE

MAY 4 1987

SIGNATURES OF APPROVAL, IF ANY:

Permit Expires 6 Months From Approval  
Date Unless Drilling Underway.

RECEIVED  
MAY 1 1987  
OCD  
HOBBS OFFICE

All distances must be from the outer boundaries of the Section.

Operator Texaco Inc.			Lease J. M. Huber State NCT-2			Well No. 1		
Unit Letter 0	Section 11	Township 14-S	Range 33-E	County Lea				
Actual Footage Location of Well:								
660' feet from the South line and			1980' feet from the East line					
Ground Level Elev. 4194'	Producing Formation Bough "A", "B", "C"			Pool Saunders Permo Upper Penn			Dedicated Acreage: 40 Acres	

1. Outline the acreage dedicated to the subject well by colored pencil or hachure marks on the plat below.
2. If more than one lease is dedicated to the well, outline each and identify the ownership thereof (both as to working interest and royalty).
3. If more than one lease of different ownership is dedicated to the well, have the interests of all owners been consolidated by communitization, unitization, force-pooling, etc?

☐ Yes ☐ No If answer is "yes," type of consolidation \_\_\_\_\_

If answer is "no," list the owners and tract descriptions which have actually been consolidated. (Use reverse side of this form if necessary.) \_\_\_\_\_

No allowable will be assigned to the well until all interests have been consolidated (by communitization, unitization, forced-pooling, or otherwise) or until a non-standard unit, eliminating such interests, has been approved by the Division.

#### CERTIFICATION

I hereby certify that the information contained herein is true and complete to the best of my knowledge and belief.

*Bethel L. Eiland*  
Name

Bethel L. Eiland

Position

Division Surveyor

Company

Texaco Inc.

Date

April 28, 1987

I hereby certify that the well location shown on this plat was plotted from field notes of actual surveys made by me or under my supervision, and that the same is true and correct to the best of my knowledge and belief.

Date Surveyed

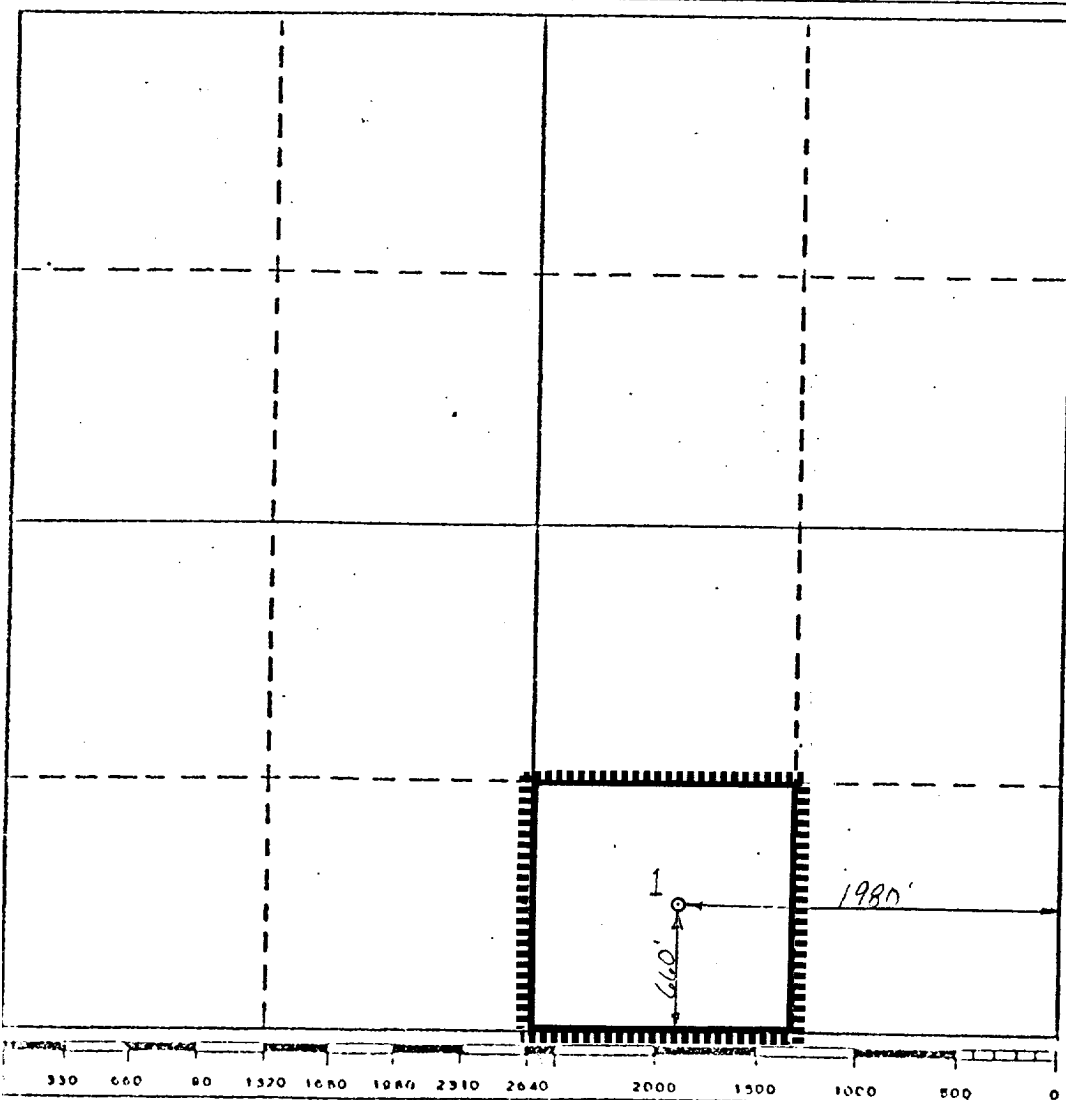
NEW  
March 27, 1987

Registered Professional Engineer  
and/or Land Surveyor

4386

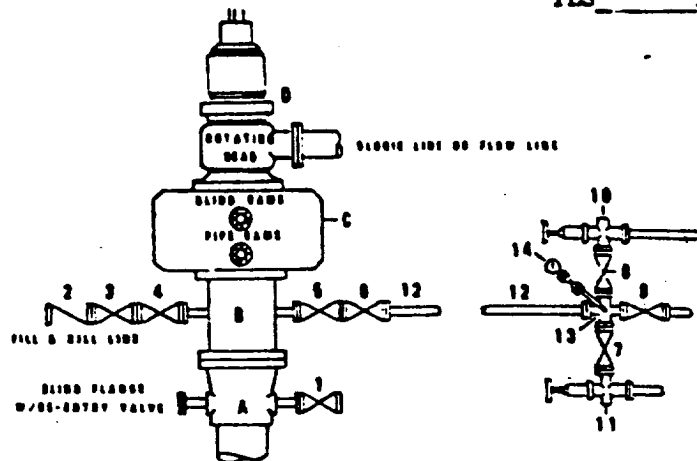
Certified Not

4986



**DRILLING CONTROL**  
**CONDITION II-B 3000 WP**  
**FOR AIR DRILLING OR**  
**WHERE YATES AIR BLOWS ARE EXPECTED**

**H<sub>2</sub>S TRIM REQUIRED**  
**YES \_\_\_\_\_ NO \_\_\_\_\_**



**DRILLING CONTROL**

**MATERIAL LIST - CONDITION II - B**  
**FOR AIR DRILLING**

- A Texaco Wellhead
- B 3000# W.P. drilling spool with a 2" minimum flanged outlet for kill-line and 3" minimum flanged outlet for choke line
- C 3000# W.P. Dual ram type preventer, hydraulic operated with 1" steel, 3000# W.P. control lines (where sub-structure height is adequate, 2-3000# W.P. single ram type preventers may be utilized.)
- D Rotating Head and extended Blosie Line.
- 1,3,4, 7,8 2" minimum 3000# W.P. flanged full opening steel gate valve, or Halliburton Lo Torc Plug valve.
- 2 2" minimum 3000# W.P. back pressure valve
- 5,6,9 3" minimum 3000# W.P. flanged full opening steel gate valve, or Halliburton Lo Torc Plug valve.
- 12 3" minimum schedule 80, Grade "B", seamless line pipe
- 13 2" minimum x 3" minimum 3000# W.P. flanged cross
- 10, 11 2" minimum 3000# W.P. adjustable choke bodies
- 14 Cameron Mud Gauge or equivalent (location optional in choke line.)



**TEXACO, INC.**  
 MIDLAND DIVISION  
 MIDLAND, TEXAS



SCALE	DATE	EST NO	DWG NO
DRAWN BY			
CHECKED BY			
APPROVED BY			

**EXHIBIT C**

RECEIVED  
MAY 1 1987  
OCD  
HOBBS OFFICE

Recd. 8/2/87

Recd 6/2/87

173