

District I
1625 N. French Dr., Hobbs, NM 88240
District II
1301 W. Grand Avenue, Artesia, NM 88210
District III
1000 Rio Brazos Road, Aztec, NM 87410
District IV
1220 S. St. Francis Dr., Santa Fe, NM 87505

State of New Mexico
Energy Minerals and Natural Resources

Oil Conservation Division
1220 South St. Francis Dr.
Santa Fe, NM 87505

Form C-101
Revised March 17, 1999

Submit to appropriate District Office
State Lease - 6 Copies
Fee Lease - 5 Copies

☐ AMENDED REPORT

APPLICATION FOR PERMIT TO DRILL, RE-ENTER, DEEPEN, PLUGBACK, OR ADD A ZONE

¹ Operator Name and Address Llmark Corporation P.O. Box 10708 Midland, Texas 79702-7708		² OGRID Number 152527
		³ API Number 30 - 025 - 30106
³ Property Code 30904	⁵ Property Name State DZ	⁶ Well No. 1

7 Surface Location

UL or lot no.	Section	Township	Range	Lot Idn	Feet from the	North/South line	Feet from the	East/West line	County
N	23	12S	38E		330	South	1650 1640	West	Lea

8 Proposed Bottom Hole Location If Different From Surface

UL or lot no.	Section	Township	Range	Lot Idn	Feet from the	North/South line	Feet from the	East/West line	County

⁹ Proposed Pool 1 Trinity; Wolfcamp	¹⁰ Proposed Pool 2
---	-------------------------------

¹¹ Work Type Code E	¹² Well Type Code O	¹³ Cable/Rotary R	¹⁴ Lease Type Code S	¹⁵ Ground Level Elevation 3792' GR
¹⁶ Multiple No	¹⁷ Proposed Depth 9300'	¹⁸ Formation Wolfcamp	¹⁹ Contractor Key	²⁰ Spud Date FEB 06 2002

21 Proposed Casing and Cement Program

Hole Size	Casing Size	Casing weight/foot	Setting Depth	Sacks of Cement	Estimated TOC
17 1/2"	13 3/8"	48# & 54.5#	400'	400 sx	surface
12 1/4"	9 5/8"	36# & 40#	4500'	2300 sx	surface
7 7/8"	5 1/2"	17#	9300'	450 sx	7500' (est)

²² Describe the proposed program. If this application is to DEEPEN or PLUG BACK, give the data on the present productive zone and proposed new productive zone.

Describe the blowout prevention program, if any. Use additional sheets if necessary.

Drill out plugs as follows:

10 sx @ surface, 50 sx - 362' to 462', 50 sx - 1907' to 2007', 50 sx - 4451' to 4551', 50 sx - 5813' to 5913', 50 sx - 7775' to 7875'. Run logs. Run 5 1/2" casing and cement.

Blowout preventor attached.

Permit Expires 1 Year From Approval
Date Unless Drilling Underway

²³ I hereby certify that the information given above is true and complete to the best of my knowledge and belief.

Signature:

Printed name: Mark A. Philpy

Title: President

Date: 11/26/2002

Phone: 915/684-5765

OIL CONSERVATION DIVISION

Approved by:

Title:

Approval Date:

Expiration Date:

Conditions of Approval:

Attached ☐

DISTRICT I
P.O. Box 1000, Hobbs, NM 88241-1000

State of New Mexico
Energy, Minerals and Natural Resources Department

Form C-102
Revised February 10, 1994
Submit to Appropriate District Office
State Lease - 4 Copies
Fee Lease - 3 Copies

DISTRICT II
P.O. Drawer 900, Artesia, NM 80211-0710

OIL CONSERVATION DIVISION
P.O. Box 2088
Santa Fe, New Mexico 87504-2088

DISTRICT III
1000 Rio Brason Rd., Aztec, NM 87410

DISTRICT IV
P.O. Box 2088, Santa Fe, N.M. 87504-2088

WELL LOCATION AND ACREAGE DEDICATION PLAT

☐ AMENDED REPORT

API Number 30-025-30106	Pool Code 59890	Pool Name TRINITY WOLFCAMP
Property Code 30904	Property Name STATE DZ	Well Number 1
OGRID No. 152527	Operator Name LIMARK CORPORATION	Elevation 3792'

Surface Location

UL or lot No.	Section	Township	Range	Lot Idn	Feet from the	North/South line	Feet from the	East/West line	County
N	23	12-S	38-E		330'	SOUTH	1640' 1650'	WEST	LEA

Bottom Hole Location If Different From Surface

UL or lot No.	Section	Township	Range	Lot Idn	Feet from the	North/South line	Feet from the	East/West line	County
40									
Dedicated Acres	Joint or Infill	Consolidation Code	Order No.						

NO ALLOWABLE WILL BE ASSIGNED TO THIS COMPLETION UNTIL ALL INTERESTS HAVE BEEN CONSOLIDATED
OR A NON-STANDARD UNIT HAS BEEN APPROVED BY THE DIVISION

LOT 1	
39.48 AC LOT 2	
38.57 AC LOT 3	GEODETIC COORDINATES NAD 27 NME Y = 823631.4 X = 886083.9 LAT. = 33°15'27.99"N LONG. = 103°04'13.36"W
37.69 AC LOT 4	
38.84 AC	

1650'
1640'
330'

OPERATOR CERTIFICATION

I hereby certify that the information contained herein is true and complete to the best of my knowledge and belief.

Robert W. Hodge
Signature
Robert W. Hodge
Printed Name
Vice President
Title
11-27-02
Date

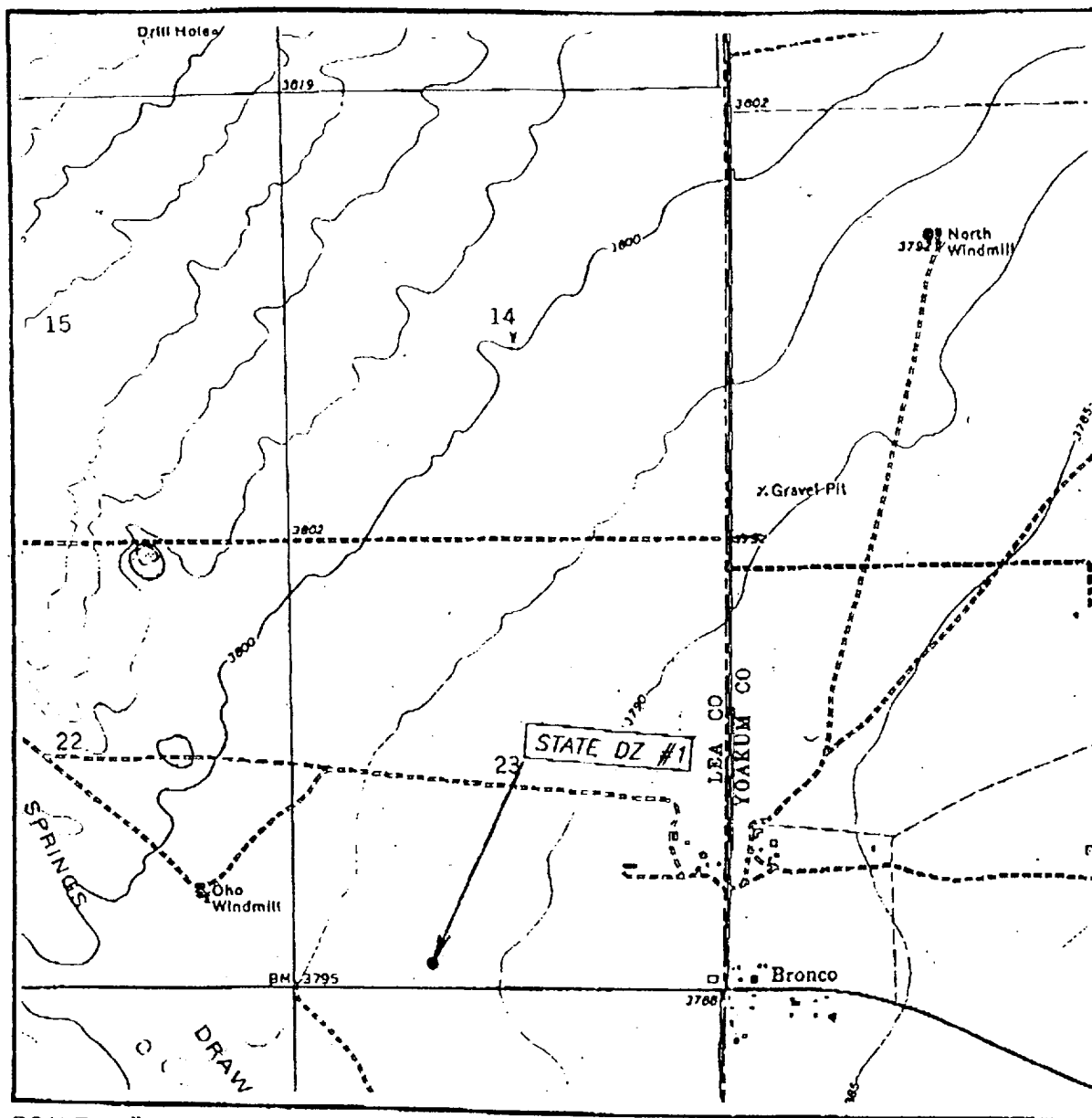
SURVEYOR CERTIFICATION

I hereby certify that the well location shown on this plat was plotted from field notes of actual surveys made by me or under my supervision and that the same is true and correct to the best of my belief.

NOVEMBER 26, 2002

Date Surveyed
Signature of Registered Professional Surveyor
Raymond J. Edson
12644
02.11.09225
Certification
RAYMOND J. EDSON 3239
12644

LOCATION VERIFICATION MAP



SCALE: 1" = 2000'

CONTOUR INTERVAL: 5'
BRONCO, N.M.

SEC. 23 TWP. 12-S RGE. 38-E

SURVEY N.M.P.M.

COUNTY LEA

DESCRIPTION 330' FSL & 1650' FWL

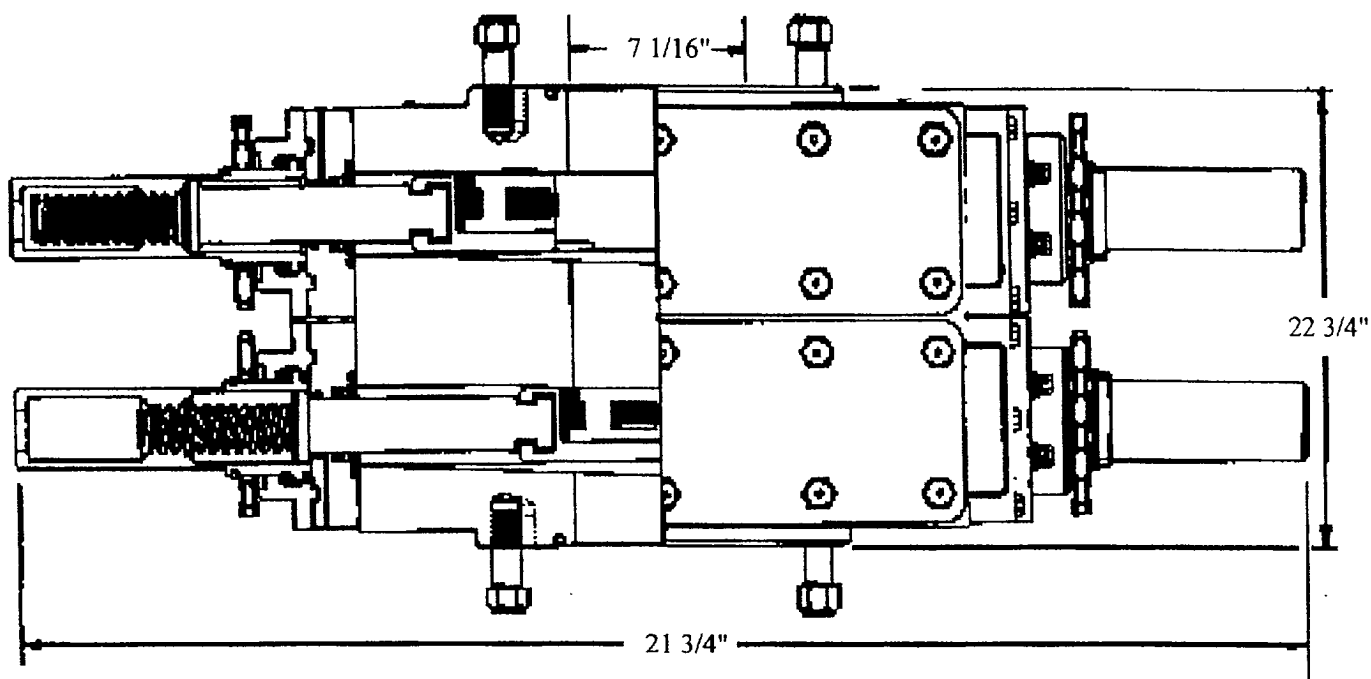
ELEVATION 3792'

OPERATOR LIMARK CORPORATION

LEASE STATE DZ

U.S.G.S. TOPOGRAPHIC MAP
BRONCO, N.M.

JOHN WEST SURVEYING
HOBBS, NEW MEXICO
(505) 393-3117



DIMENSIONS AND WEIGHTS

4.5

WEIGHT	2235 lbs.
Overall height less studs	22 3/4"
Overall Length	63"
Overall width	21 3/4"
Opening through Bore	7 1/16"
Working Pressure	3000 psi
Test Pressure	6000 psi
Ring Joint Gasket	R - 45

Reedy Manufacturing & Repair Service, Inc.

Copyright 1995 Reedy Manufacturing & Repair Service, Inc. all rights reserved. This manual may not be reproduced in any form without the express written permission of Reedy Manufacturing & Repair Service, Inc. NO MANUAL CHANGES ALLOWED.

**Operation.pm5
Manual**

Rev: 0.0

Page: 24 of 30

Date: 7/8/95

Approved by: jbc