

NEW MEXICO OIL CONSERVATION COMMISSION
WELL LOCATION AND ACREAGE DEDICATION PLAT

Form C-128
Supersedes C-128
Effective 10-65

All distances must be from the outer boundaries of the Section

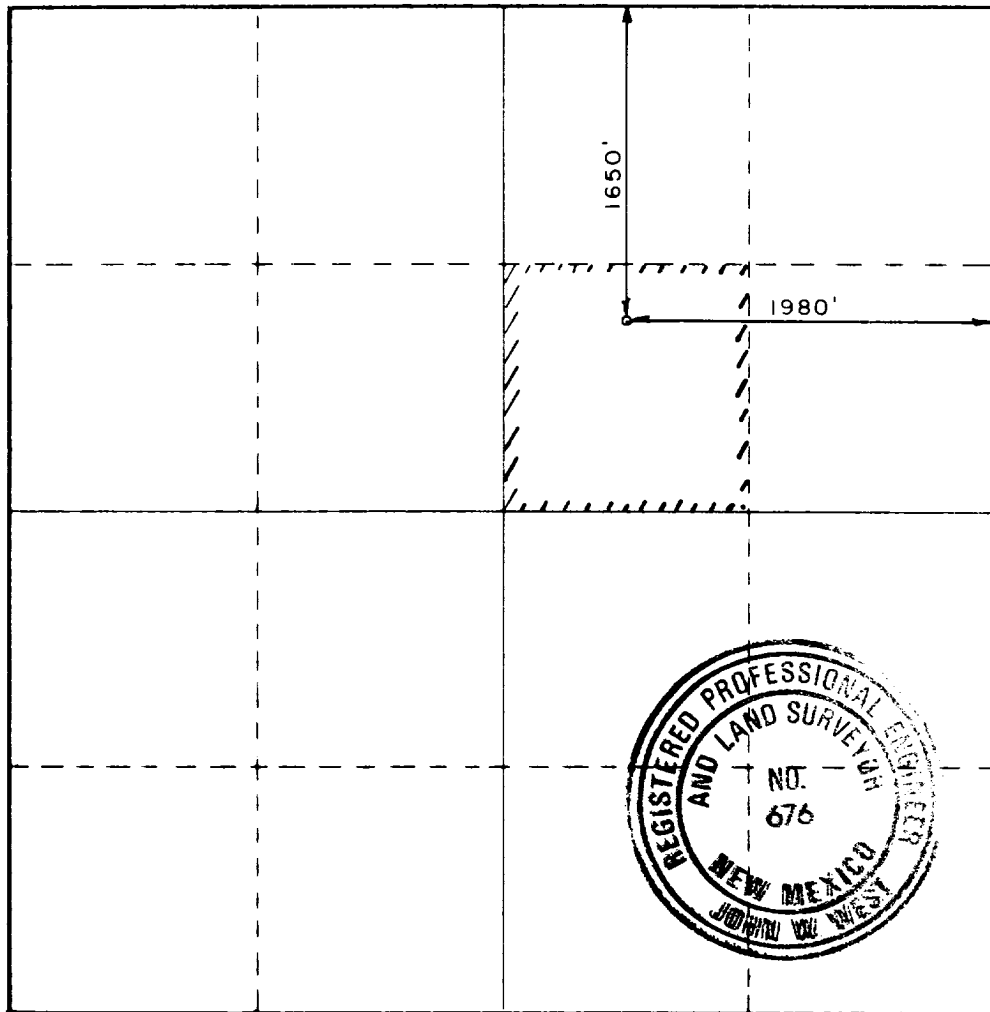
Operator Marathon Oil Company			Lease State 15			Well No. 1		
Tract Letter G	Section 15	Township 14 South	Range 32 East	County Lea				
Actual Footage Location of Well: 1650 feet from the North line and 1980 feet from the East line								
Ground Level Elev. 4309.6	Producing Formation Silurian		Pool Wildcat			Dedicated Acreage 40 Acres		

1. Outline the acreage dedicated to the subject well by colored pencil or hachure marks on the plat below.
2. If more than one lease is dedicated to the well, outline each and identify the ownership thereof (both as to working interest and royalty).
3. If more than one lease of different ownership is dedicated to the well, have the interests of all owners been consolidated by communitization, unitization, force-pooling, etc?

☐ Yes ☐ No If answer is "yes," type of consolidation _____

If answer is "no," list the owners and tract descriptions which have actually been consolidated. (Use reverse side of this form if necessary.) _____

No allowable will be assigned to the well until all interests have been consolidated (by communitization, unitization, forced-pooling, or otherwise) or until a non-standard unit, eliminating such interests, has been approved by the Commission.



CERTIFICATION

I hereby certify that the information contained herein is true and complete to the best of my knowledge and belief.

Name
W. J. Quian, Co. T. L. Rivers

Position
Dist. Drilling Supt.

Company
Marathon oil Company

Date
Dec. 22, 1987

I hereby certify that the well location shown on this plat was plotted from field notes of actual surveys made by me or under my supervision, and that the same is true and correct to the best of my knowledge and belief.

Date Surveyed
December 22, 1987

Registered Professional Engineer and/or Land Surveyor

[Signature]
Certificate No. JOHN W. WEST, 676
RONALD J. EIDSON, 3239

ELF
Rec'd 3/10/88

REC'D
MAR 10 1988
FBI - NEW YORK