

Submit to Appropriate
District Office
State Lease - 6 copies
Fee Lease - 5 copies

State of New Mexico
Energy, Minerals and Natural Resources Department

Form C-101
Revised 1-1-89

OIL CONSERVATION DIVISION

DISTRICT I
P.O. Box 1980, Hobbs, NM 88240

DISTRICT II
P.O. Drawer DD, Artesia, NM 88210

DISTRICT III
1000 Rio Brazos Rd., Aztec, NM 87410

P.O. Box 2088
Santa Fe, New Mexico 87504-2088

API NO. (assigned by OCD on New Wells)

30-035-30855

5. Indicate Type of Lease

STATE ☐

FEE ☒

6. State Oil & Gas Lease No.

APPLICATION FOR PERMIT TO DRILL, DEEPEN, OR PLUG BACK

1a. Type of Work:

DRILL ☐

RE-ENTER ☐

DEEPEN ☐

PLUG BACK ☒

b. Type of Well:

OIL
WELL ☒

GAS
WELL ☐

OTHER ☐

SINGLE
ZONE ☒

MULTIPLE
ZONE ☐

7. Lease Name or Unit Agreement Name

Howard Fleet

2. Name of Operator

American Exploration Company

8. Well No.

5

3. Address of Operator

1331 Lamar Street, Suite 900 Houston, Texas 77010-3088

9. Pool name or Wildcat

King Wolfcamp

4. Well Location

Unit Letter

I

: 2,950

Feet From The

South

Line and

600

Feet From The

East

Line

Section

35

Township

13S

Range

37E

NMPM

Lea

County

10. Proposed Depth

10,915'

11. Formation

Wolfcamp

12. Rotary or C.T.

Rotary

13. Elevations (Show whether DF, RT, GR, etc.)

3,843.5

14. Kind & Status Plug. Bond

Bond

15. Drilling Contractor

To be determined

16. Approx. Date Work will start

ASAP

17. PROPOSED CASING AND CEMENT PROGRAM

SIZE OF HOLE	SIZE OF CASING	WEIGHT PER FOOT	SETTING DEPTH	SACKS OF CEMENT	EST. TOP
17 1/2"	13 3/8"	54.5	415	500 SX	Surface
11"	8 5/8"	32	4,525	1400 SX LT + 200 SX C	Surface
7 7/8"	5 1/2"	17	10,915	1315 SX H + 320 SX LT + 200 SX H	6,700'

Current: King Penn - Perforations 10,087' to 10,874'.

Proposed: Recomplete to King Wolfcamp. Set a CIBP with 15' cement at 10,000'.
Perforate 9,322' to 9,877'.

IN ABOVE SPACE DESCRIBE PROPOSED PROGRAM: IF PROPOSAL IS TO DEEPEN OR PLUG BACK, GIVE DATA ON PRESENT PRODUCTIVE ZONE AND PROPOSED NEW PRODUCTIVE ZONE. GIVE BLOWOUT PREVENTER PROGRAM, IF ANY.

I hereby certify that the information above is true and complete to the best of my knowledge and belief.

SIGNATURE

Linda Onstott

TITLE Regulatory Coordinator

DATE November 15, 1993

TYPE OR PRINT NAME

Linda Onstott

TELEPHONE NO. (713) 756-6399

(This space for State Use)

ORIGINAL SIGNED BY JERRY SEXTON

DISTRICT I SUPERVISOR

APPROVED BY

TITLE

DATE NOV 16 1993

CONDITIONS OF APPROVAL, IF ANY:

Submit to Appropriate
District Office
State Lease - 4 copies
Fee Lease - 3 copies

State of New Mexico
Energy, Minerals and Natural Resources Department

Form C-102
Revised 1-1-89

OIL CONSERVATION DIVISION

P.O. Box 2088

Santa Fe, New Mexico 87504-2088

DISTRICT I

P.O. Box 1980, Hobbs, NM 88240

DISTRICT II

P.O. Drawer DD, Artesia, NM 88210

DISTRICT III

1000 Rio Brazos Rd., Aztec, NM 87410

WELL LOCATION AND ACREAGE DEDICATION PLAT

All Distances must be from the outer boundaries of the section

Operator AMERICAN EXPLORATION CO.			Lease Howard Fleet		Well No. 5
Unit Letter I	Section 35	Township 13 South	Range 37 East	County NMPM	Lea
Actual Footage Location of Well: 2250 feet from the South line and 600 feet from the East line					
Ground level Elev. 3843.5	Producing Formation Wolfcamp	Pool King Wolfcamp		Dedicated Acreage: 40 Acres	

1. Outline the acreage dedicated to the subject well by colored pencil or hatchure marks on the plat below.

2. If more than one lease is dedicated to the well, outline each and identify the ownership thereof (both as to working interest and royalty).

3. If more than one lease of different ownership is dedicated to the well, have the interest of all owners been consolidated by communitization, unitization, force-pooling, etc.?

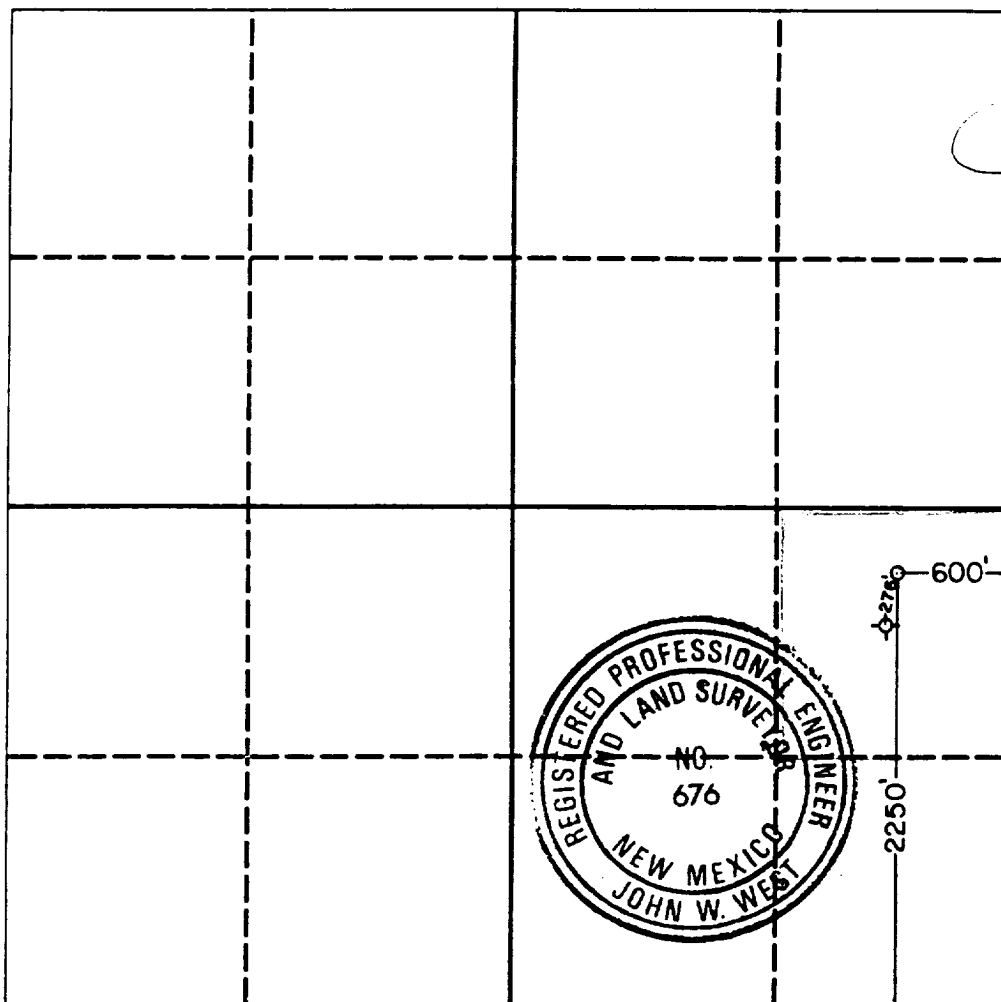
☐ Yes

☒ No

If answer is "yes" type of consolidation

If answer is "no" list the owners and tract descriptions which have actually been consolidated. (Use reverse side of this form if necessary.)

No allowable will be assigned to the well until all interests have been consolidated (by communitization, unitization, forced-pooling, or otherwise) or until a non-standard unit, eliminating such interest, has been approved by the Division.



OPERATOR CERTIFICATION

I hereby certify that the information contained herein is true and complete to the best of my knowledge and belief.

Signature

Linda Onstott

Printed Name

Regulatory Coordinator

Position

American Exploration Company

Company

November 15, 1993

Date

SURVEYOR CERTIFICATION

I hereby certify that the well location shown on this plat was plotted from field notes of actual surveys made by me or under my supervision, and that the same is true and correct to the best of my knowledge and belief.

Date Surveyed

March 19, 1990

Signature & Seal of
Professional Surveyor

Certificate No. JOHN W. WEST, 676

RONALD J. EIDSON, 3239