

Submit to Appropriate  
District Office  
State Lease - 6 copies  
Fee Lease - 5 copies

State of New Mexico  
Energy, Minerals and Natural Resources Department

Form C-101  
Revised 1-1-89

# OIL CONSERVATION DIVISION

DISTRICT I  
P.O. Box 1980, Hobbs, NM 88240

DISTRICT II  
P.O. Drawer DD, Artesia, NM 88210

DISTRICT III  
1000 Rio Brazos Rd., Aztec, NM 87410

P.O. Box 2088  
Santa Fe, New Mexico 87504-2088

API NO. (assigned by OCD on New Wells)

3002531152

5. Indicate Type of Lease

STATE ☐

FEE ☒

6. State Oil & Gas Lease No.

## APPLICATION FOR PERMIT TO DRILL, DEEPEN, OR PLUG BACK

1a. Type of Work:

DRILL ☐

RE-ENTER ☐

DEEPEN ☐

PLUG BACK ☒

b. Type of Well:

OIL  
WELL ☒

GAS  
WELL ☐

OTHER ☐

SINGLE  
ZONE ☒

MULTIPLE  
ZONE ☐

7. Lease Name or Unit Agreement Name

Kendrick

2. Name of Operator

Pitts Energy Co.

8. Well No.

1

3. Address of Operator

511 W. Ohio, #300 Midland, TX 79701

9. Pool name or Wildcat

Gladiola (Wolfcamp)

4. Well Location

Unit Letter J : 1650 Feet From The East Line and 1500 Feet From The South Line

Section 5 Township 12-S Range 38-E NMPM Lea County

10. Proposed Depth

11,968

11. Formation

Wolfcamp

12. Rotary or C.T.

Rotary

13. Elevations (Show whether DF, RT, GR, etc.)

3861 GR

14. Kind & Status Plug. Bond

1 well

15. Drilling Contractor

n/a

16. Approx. Date Work will start

March 1992

17.

### PROPOSED CASING AND CEMENT PROGRAM

SIZE OF HOLE	SIZE OF CASING	WEIGHT PER FOOT	SETTING DEPTH	SACKS OF CEMENT	EST. TOP
17 1/2	13 3/8	54.5#	378	420	surface
12 1/4	8 5/8	32 #	4494	1410	surface
7 7/8	5 1/2	17#	11,952	850	9601

DVT @ 9601

1460

4400

This application is to plug back to the Wolfcamp zone from 9468' to 9577'. A plug will be set as recommended by the District to isolate the Devonian which produces water with noncommercial amounts of oil. A BOP with 2 3/8" rams will be used during all plug back operations.

IN ABOVE SPACE DESCRIBE PROPOSED PROGRAM: IF PROPOSAL IS TO DEEPEN OR PLUG BACK, GIVE DATA ON PRESENT PRODUCTIVE ZONE AND PROPOSED NEW PRODUCTIVE ZONE. GIVE BLOWOUT PREVENTER PROGRAM, IF ANY.

I hereby certify that the information above is true and complete to the best of my knowledge and belief.

SIGNATURE \_\_\_\_\_ TITLE Engineer DATE 1/22/92

TYPE OR PRINT NAME Gregory S. Pitts TELEPHONE NO. 915/682-4101

(This space for State Use)

ORIGINAL SIGNED BY HARRY SEXTON

DISTRICT SUPERVISOR

APPROVED BY \_\_\_\_\_ TITLE \_\_\_\_\_ DATE \_\_\_\_\_

CONDITIONS OF APPROVAL, IF ANY:

JAN 24 '92

mit to Appropriate  
strict Office  
ate Lease - 4 copies  
ee Lease - 3 copies

State of New Mexico  
Energy, Minerals and Natural Resources Department

Form C-102  
Revised 1-1-89

+

OIL CONSERVATION DIVISION

P.O. Box 2088

Santa Fe, New Mexico 87504-2088

30 025-31152

DISTRICT I  
P.O. Box 1980, Hobbs, NM 88240

DISTRICT II  
P.O. Drawer DD, Artesia, NM 88210

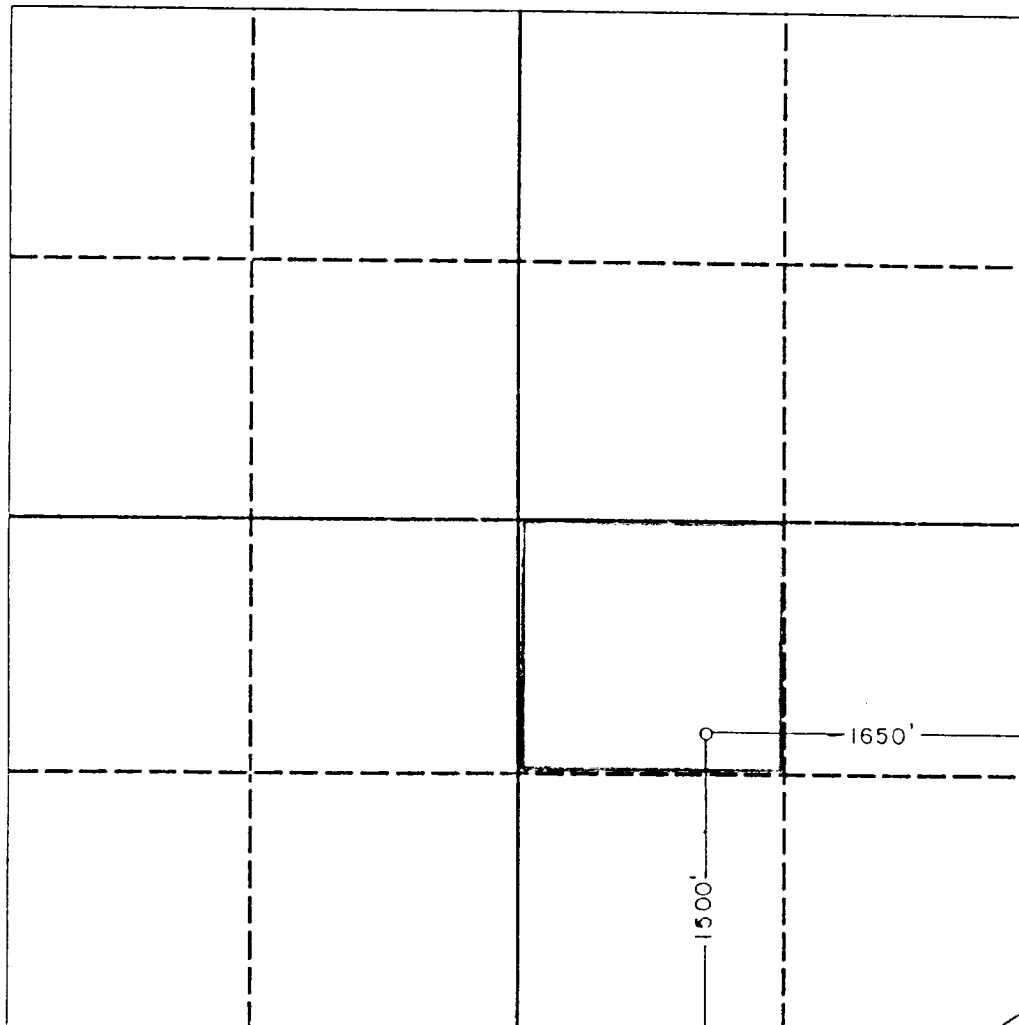
DISTRICT III  
1000 Rio Brazos Rd., Aztec, NM 87410

WELL LOCATION AND ACREAGE DEDICATION PLAT

All Distances must be from the outer boundaries of the section

Operator PITTS ENERGY			Lease KENDRICK		Well No. 1
Unit Letter J	Section 5	Township 12 SOUTH	Range 38 EAST	County LEA	
Actual Footage Location of Well: 1500 feet from the SOUTH line and 1650 feet from the EAST line					
Ground level Elev. 3861.0	Producing Formation Wolfcamp		Pool Gladiola Wolfcamp	Dedicated Acreage: 40 Acres	

1. Outline the acreage dedicated to the subject well by colored pencil or hatchure marks on the plat below.
2. If more than one lease is dedicated to the well, outline each and identify the ownership thereof (both as to working interest and royalty).
3. If more than one lease of different ownership is dedicated to the well, have the interest of all owners been consolidated by communization, unitization, force-pooling, etc.?  
☐ Yes ☐ No If answer is "yes" type of consolidation \_\_\_\_\_  
If answer is "no" list the owners and tract descriptions which have actually been consolidated. (Use reverse side of this form if necessary). \_\_\_\_\_  
No allowable will be assigned to the well until all interests have been consolidated (by communization, unitization, forced-pooling, or otherwise) or until a non-standard unit, eliminating such interest, has been approved by the Division.



OPERATOR CERTIFICATION

I hereby certify that the information contained herein is true and complete to the best of my knowledge and belief.

Signature  
Gregory S. Pitts  
Printed Name  
Engineer  
Position  
Pitts Energy Co.  
Company  
1/27/92  
Date

SURVEYOR CERTIFICATION

I hereby certify that the well location shown on this plat was plotted from field notes of actual surveys made by me or under my supervision, and that the same is true and correct to the best of my knowledge and belief.

Date Surveyed  
1-23-91  
Signature & Seal of  
Professional Surveyor

Certificate No. JOHN W. WEST, 675  
RONALD J. EIDSON, 3239

