

District II
PO Drawer DD, Artesia, NM 88211-0719
District III
1000 Rio Brazos Rd., Aztec, NM 87410
District IV
PO Box 2088, Santa Fe, NM 87504-2088

OIL CONSERVATION DIVISION
PO Box 2088
Santa Fe, NM 87504-2088

Instructions on back
Submit to Appropriate District Office
State Lease - 6 Copies
Fee Lease - 5 Copies

☐ AMENDED REPORT

APPLICATION FOR PERMIT TO DRILL, RE-ENTER, DEEPEN, PLUGBACK, OR ADD A ZONE

Operator Name and Address: RAND PAULSON OIL COMPANY, INC. 508 W. WALL, STE 100 MIDLAND, TX 79701		OGRID Number 159123
Property Code 20924	Property Name ESTACADO 14 STATE	API Number 30-025-34002
		Well No. 1

Surface Location

UL or lot no.	Section	Township	Range	Lot Idn	Feet from the	North/South line	Feet from the	East/West line	County
G	14	14 S	34 E		1980	NORTH	1980	EAST	LEA

Proposed Bottom Hole Location If Different From Surface

UL or lot no.	Section	Township	Range	Lot Idn	Feet from the	North/South line	Feet from the	East/West line	County

Proposed Pool 1

WILDCAT (ATOKA)

Proposed Pool 2

Work Type Code N	Well Type Code G	Cable/Rotary ROTARY	Lease Type Code S	Ground Level Elevation 4097'
Multiple NA	Proposed Depth 12,500'	Formation ATOKA	Contractor TMBR/SHARP	Spud Date ASAP

Proposed Casing and Cement Program

Hole Size	Casing Size	Casing weight/foot	Setting Depth	Sacks of Cement	Estimated TOC
17 1/2"	13 3/8"	54.5	450	450	SURFACE
11"	8 5/8"	32	6200	1100	SURFACE
7 7/8"	5 1/2"	17 1/2	12500	850	8000'

Permit Expires 1 Year From Approval
Date: Please Print Here

Describe the proposed program. If this application is to DEEPEN or PLUG BACK give the data on the present productive zone and proposed new productive zone. Describe the blowout prevention program, if any. Use additional sheets if necessary.

Purpose to drill an Atoka well to 12,500'. Cement will be circulated to surface on 13 3/8" and 8 5/8". Plan to test significant shows and evaluate with adequate logging program. Completion or abandonment will be performed in accordance with prudent practices and regulatory requirements. A double ram series 900 BOP and choke manifold will be used from 8 5/8" casing to total depth.

I hereby certify that the information given above is true and complete to the best of my knowledge and belief.

Signature:

O. H. Routh

Printed name:

O. H. ROUTH

Title:

AGENT

Date:

5-29-97

Phone:

915-687-0323

OIL CONSERVATION DIVISION

Approved by:

Title:

Approval Date:

JUN 06 1997

Expiration Date:

Conditions of Approval:

Attached ☐

DISTRICT I
P.O. Box 1980, Hobbs, NM 88241-1980

State of New Mexico
Energy, Minerals and Natural Resources Department

Form C-102
Revised February 10, 1994
Submit to Appropriate District Office
State Lease - 4 Copies
Fee Lease - 3 Copies

DISTRICT II
P.O. Drawer DD, Artesia, NM 88211-0719

DISTRICT III
1000 Rio Brazos Rd., Aztec, NM 87410

OIL CONSERVATION DIVISION

P.O. Box 2088
Santa Fe, New Mexico 87504-2088

☐ AMENDED REPORT

DISTRICT IV
P.O. Box 2088, Santa Fe, NM 87504-2088

WELL LOCATION AND ACREAGE DEDICATION PLAT

API Number 30-025-34002	Pool Code 1	Pool Name WILDCAT (ATOKA)
Property Code 20924	Property Name ESTACADO "14" STATE	Well Number 1
OGRID No. 159123	Operator Name RAND PAULSON OIL COMPANY, INC.	Elevation 4097

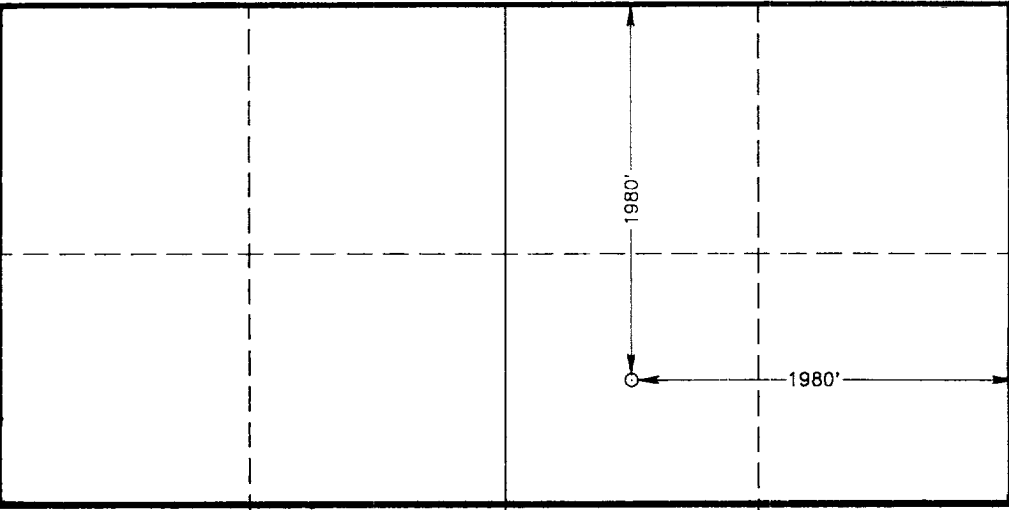

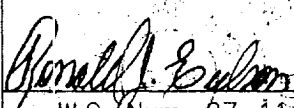
Surface Location

UL or lot No.	Section	Township	Range	Lot Idn	Feet from the	North/South line	Feet from the	East/West line	County
G	14	14 S	34 E		1980	NORTH	1890	EAST	LEA

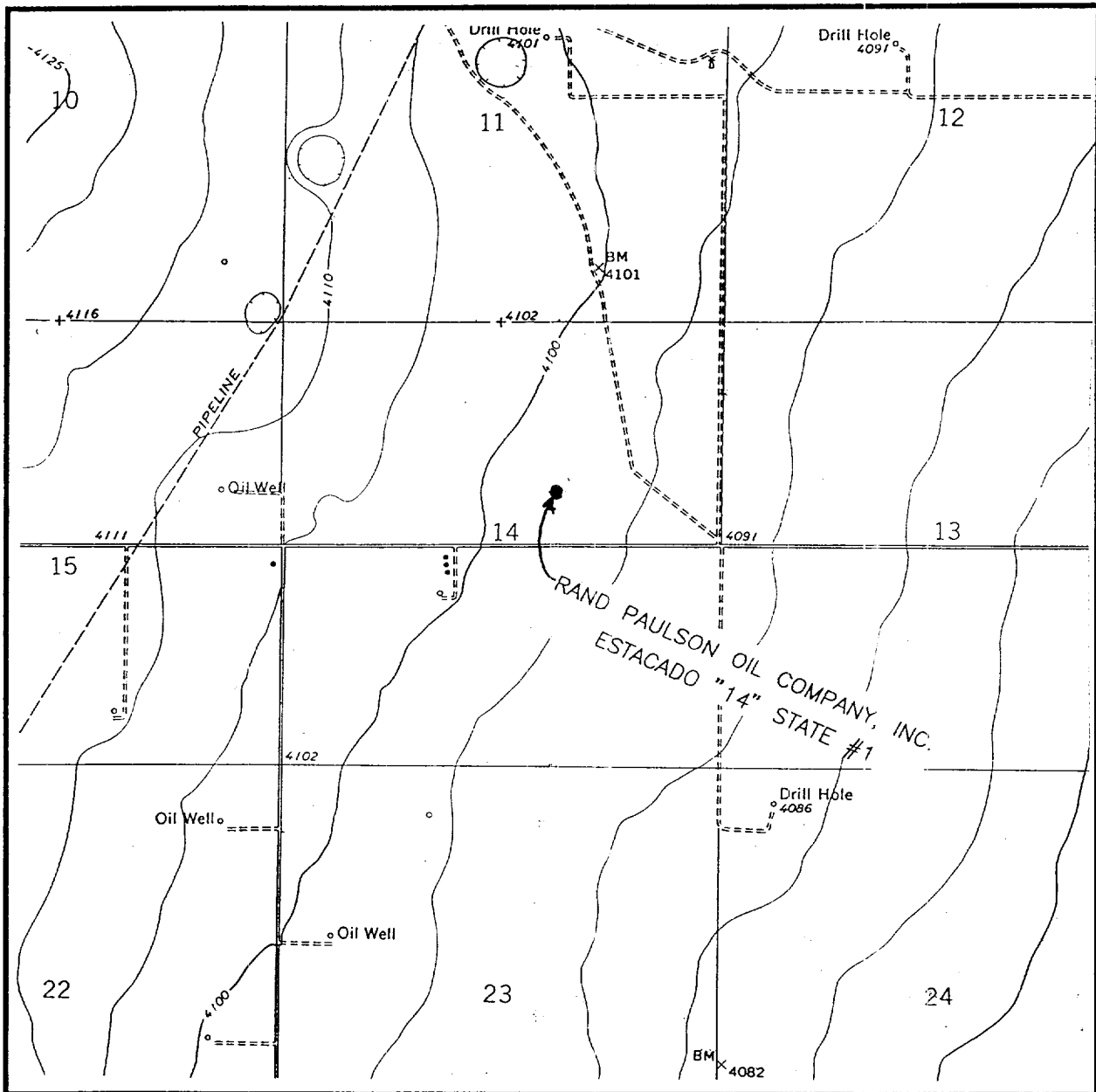
Bottom Hole Location If Different From Surface

UL or lot No.	Section	Township	Range	Lot Idn	Feet from the	North/South line	Feet from the	East/West line	County
Dedicated Acres 320	Joint or Infill N	Consolidation Code	Order No.						

NO ALLOWABLE WILL BE ASSIGNED TO THIS COMPLETION UNTIL ALL INTERESTS HAVE BEEN CONSOLIDATED
OR A NON-STANDARD UNIT HAS BEEN APPROVED BY THE DIVISION

	OPERATOR CERTIFICATION I hereby certify the the information contained herein is true and complete to the best of my knowledge and belief.  Signature O.H. ROUTH Printed Name AGENT Title 6-2-97 Date
	SURVEYOR CERTIFICATION I hereby certify that the well location shown on this plat was plotted from field notes of actual surveys made by me or under my supervision, and that the same is true and correct to the best of my belief. MAY 28, 1997 Date Surveyed Signature & Seal of Professional Surveyor  W.O. Num. 97-11-0907 Certificate No. JOHN W. WEST, 676 RONALD J. EIDSON, 3239 GARY G. EIDSON, 12641

LOCATION VERIFICATION MAP



SCALE: 1" = 2000'

CONTOUR INTERVAL - 5'

SEC. 14 TWP. 14-S RGE. 34-E

SURVEY N.M.P.M.

COUNTY LEA

DESCRIPTION 1980' FNL & 1980' FEL

ELEVATION 4097'

OPERATOR RAND PAULSON OIL COMPANY, INC.

LEASE ESTACADO "14" STATE

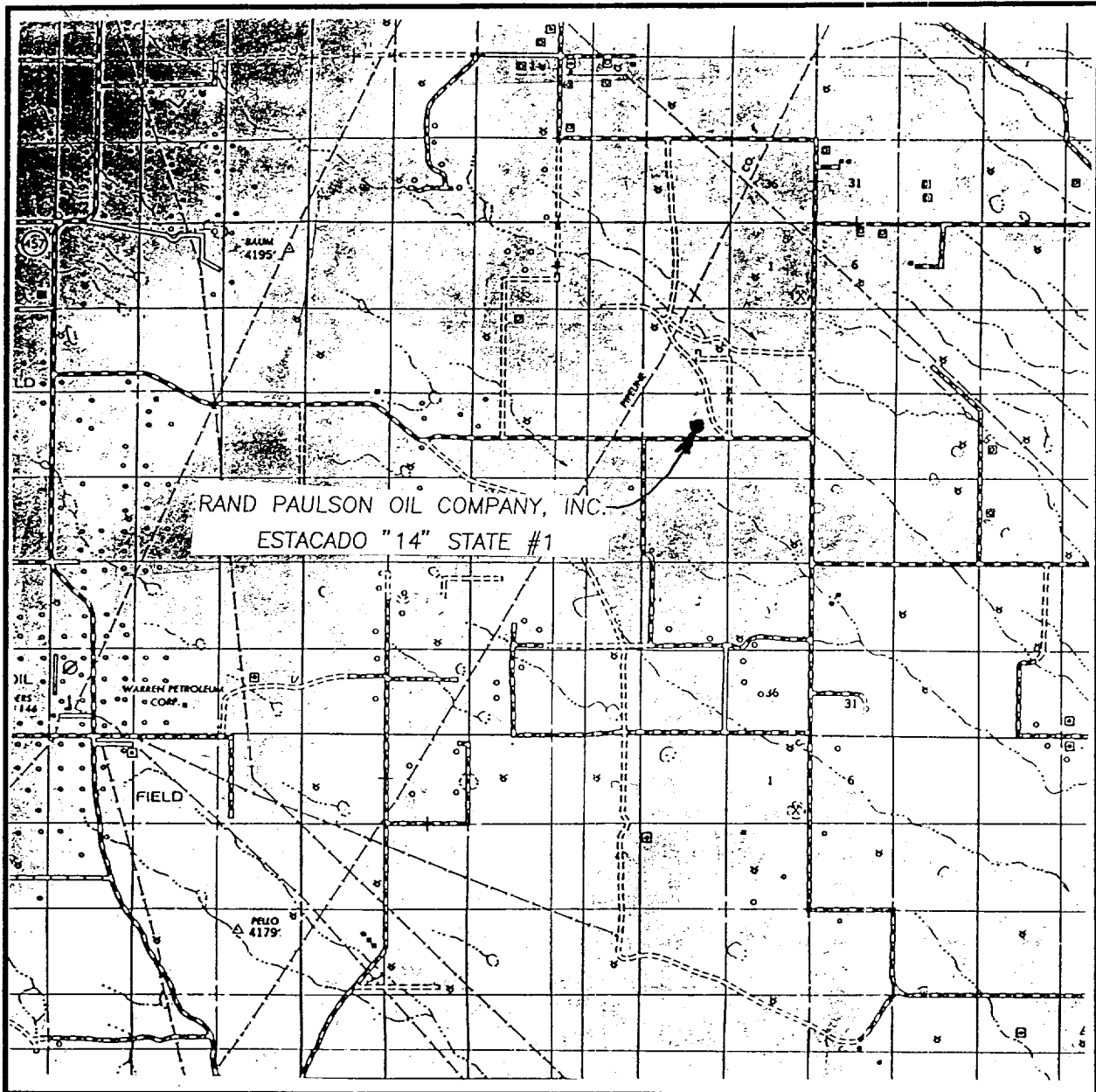
U.S.G.S. TOPOGRAPHIC MAP

HILLBURN CITY SW, N.M.

**JOHN WEST ENGINEERING
HOBBS, NEW MEXICO**

(505) 393-3117

VICINITY MAP



SCALE: 1" = 2 MILES

SEC. 14 TWP. 14-S RGE. 34-E

SURVEY N.M.P.M.

COUNTY LEA

DESCRIPTION 1980' FNL & 1980' FEL

ELEVATION 4097'

OPERATOR RAND PAULSON OIL COMPANY, INC.

LEASE ESTACADO "14" STATE

**JOHN WEST ENGINEERING
HOBBS, NEW MEXICO**

(505) 393-3117