

District I
PO Box 1980, Hobbs, NM 88241-1980
District II
PO Drawer DD, Artesia, NM 88211-0719
District III
1000 Rio Brazos Rd., Aztec, NM 87410
District IV
PO Box 2088, Santa Fe, NM 87504-2088

State of New Mexico
Energy, Minerals & Natural Resources Department

OIL CONSERVATION DIVISION
PO Box 2088
Santa Fe, NM 87504-2088

Form C-101
Revised February 10, 1994
Instructions on back
Submit to Appropriate District Office
State Lease - 6 Copies
Fee Lease - 5 Copies

☐ AMENDED REPORT

APPLICATION FOR PERMIT TO DRILL, RE-ENTER, DEEPEN, PLUGBACK, OR ADD A ZONE

Operator Name and Address: ASPEN EXPLORATION, INC. 508 W. WALL, SUITE 100 MIDLAND, TX 79701		OGRID Number 16R56
Property Code 22347	Property Name ASPEN 27 STATE	API Number 30-025-34280
		Well No. 1

Surface Location									
UL or lot no.	Section	Township	Range	Lot Idn	Feet from the	North/South line	Feet from the	East/West line	County
N	27	14-S	34-E		660	SOUTH	2130	WEST	LEA

Proposed Bottom Hole Location If Different From Surface									
UL or lot no.	Section	Township	Range	Lot Idn	Feet from the	North/South line	Feet from the	East/West line	County
Proposed Pool 1 WILDCAT (STRAWN)					Proposed Pool 2 N/A				

Work Type Code N	Well Type Code O	Cable/Rotary R	Lease Type Code S	Ground Level Elevation 4104'
Multiple NO	Proposed Depth 12,300	Formation STRAWN	Contractor DEL MAR	Spud Date ASAP

Proposed Casing and Cement Program					
Hole Size	Casing Size	Casing weight/foot	Setting Depth	Sacks of Cement	Estimated TOC
17 1/2"	13 3/8"	54.5	400'	450	SURF
11"	8 5/8"	32	6200'	1100	SURF
7 7/8"	5 1/2"	17 & 20	12,300'	400	10,500

Describe the proposed program. If this application is to DEEPEN or PLUG BACK give the data on the present productive zone and proposed new productive zone. Describe the blowout prevention program, if any. Use additional sheets if necessary.

Propose to drill a Strawn well to 12,300'. Cement will be circulated to surface on 13 3/8" and 8 5/8" casing
Plan to test significant shows and evaluate with adequate logging program. Completion or
abandonment will be performed in accordance with prudent practices and regulatory requirements.
A double ram Series 900 BOP and choke manifold will be used from 8 5/8" casing to TD.

Permit Expires 1 Year From Approval
Date Unless Drilling Underway

I hereby certify that the information given above is true and complete to the best of my knowledge and belief. Signature: <i>O.H. Routh</i>		OIL CONSERVATION DIVISION	
Printed name: O.H. ROUTH		Approved by: ORIGINAL SIGNED BY CHRIS WILLIAMS	
Title: AGENT		Title: DISTRICT I SUPERVISOR	
Date: 1-20-98	Phone: 915-687-0323	Approval Date: FEB 03 1998	Expiration Date:
		Conditions of Approval: Attached <input type="checkbox"/>	

DISTRICT I
P.O. Box 1980, Hobbs, NM 88241-1980

DISTRICT II
P.O. Drawer DD, Artesia, NM 88211-0719

DISTRICT III
1000 Rio Brazos Rd., Artesia, NM 87410

DISTRICT IV
P.O. Box 2088, Santa Fe, NM 87504-2088

State of New Mexico
Energy, Minerals and Natural Resources Department

Form C-102
Revised February 10, 1994
Submit to Appropriate District Office
State Lease - 4 Copies
Fee Lease - 3 Copies

OIL CONSERVATION DIVISION
P.O. Box 2088
Santa Fe, New Mexico 87504-2088

☐ AMENDED REPORT

WELL LOCATION AND ACREAGE DEDICATION PLAT

API Number 3D-025-34280	Pool Code ✓	Pool Name WILDCAT (STRAWN)
Property Code 22347	Property Name ASPEN "27" STATE	Well Number 1
OGRID No. 167956	Operator Name ASPEN EXPLORATION, INC.	Elevation 4104

Surface Location

UL or lot No.	Section	Township	Range	Lot Idn	Feet from the	North/South line	Feet from the	East/West line	County
N	27	14 S	34 E		660	SOUTH	2130	WEST	LEA

Bottom Hole Location If Different From Surface

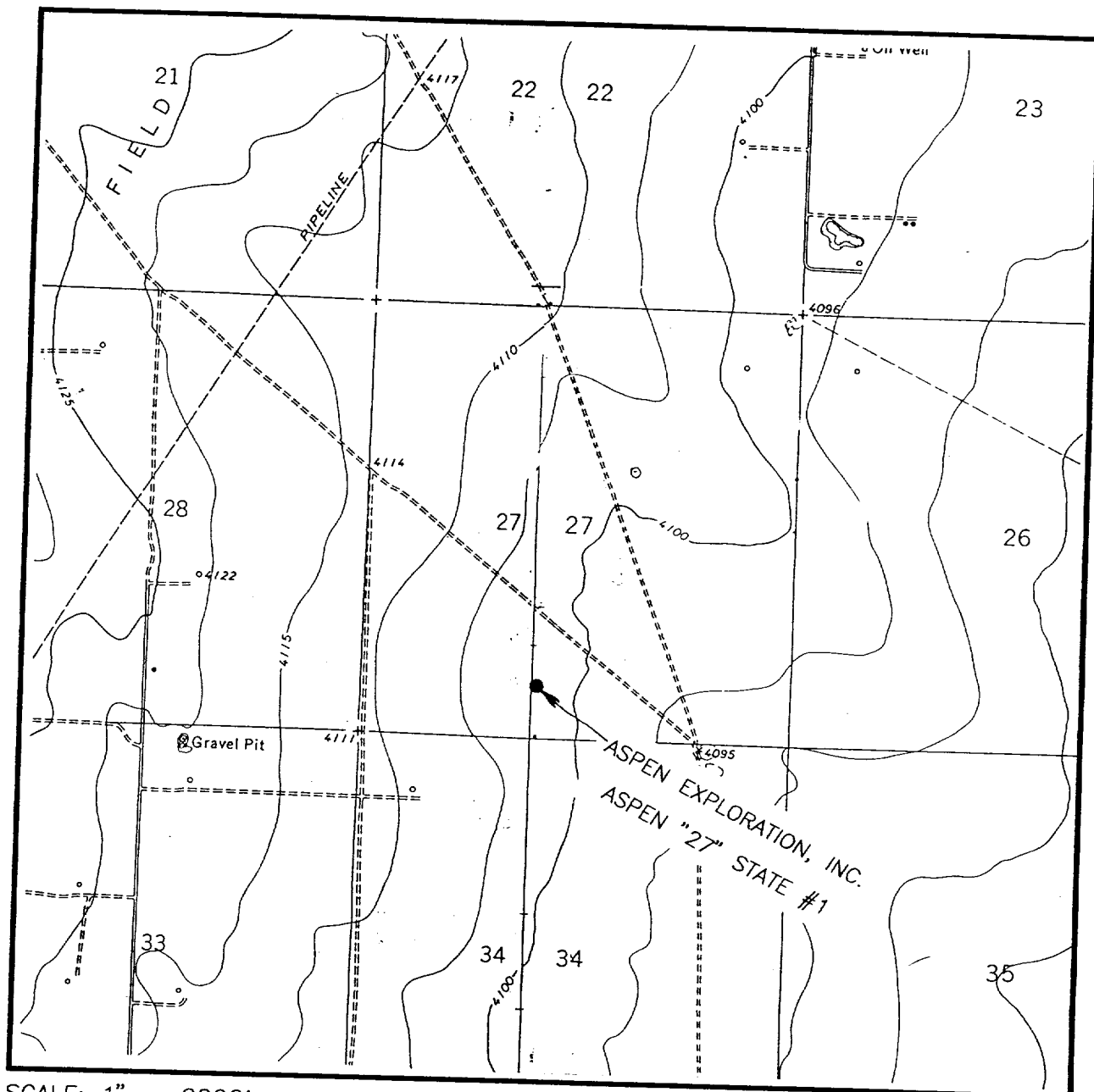
UL or lot No.	Section	Township	Range	Lot Idn	Feet from the	North/South line	Feet from the	East/West line	County
Dedicated Acres 40	Joint or Infill N	Consolidation Code	Order No.						

NO ALLOWABLE WILL BE ASSIGNED TO THIS COMPLETION UNTIL ALL INTERESTS HAVE BEEN CONSOLIDATED
OR A NON-STANDARD UNIT HAS BEEN APPROVED BY THE DIVISION

	<p>OPERATOR CERTIFICATION</p> <p>I hereby certify the the information contained herein is true and complete to the best of my knowledge and belief.</p> <p><i>[Signature]</i> Signature O.H. ROUTH Printed Name AGENT Title 1-26-98 Date</p>
	<p>SURVEYOR CERTIFICATION</p> <p>I hereby certify that the well location shown on this plat was plotted from field notes of actual surveys made by me or under my supervision, and that the same is true and correct to the best of my belief.</p> <p>JANUARY 20, 1998 Date Surveyed JLP</p> <p>Signature & Seal of Professional Surveyor <i>[Signature]</i> 01-21-98 W.O. Num. 98-11-0091</p>
	<p>Certificate No. RONALD J. EIDSON, 3239 GARY G. EIDSON, 12641 MACON McDONALD, 12185</p>

See Amended Plat

LOCATION VERIFICATION MAP



SCALE: 1" = 2000'

CONTOUR INTERVAL - 5'

SEC. 27 TWP. 14-S RGE. 34-E

SURVEY N.M.P.M.

COUNTY LEA

DESCRIPTION 660' FSL & 2130' FWL

ELEVATION 4104'

OPERATOR ASPEN EXPLORATION, INC.

LEASE ASPEN "27" STATE

U.S.G.S. TOPOGRAPHIC MAP

FORT RANCH & HILLBURN CITY SW, N.M.

**JOHN WEST ENGINEERING
HOBBS, NEW MEXICO**

(505) 393-3117