

DISTRICT I
1625 N. French Drive, Hobbs, NM 88240
DISTRICT II
811 South First, Artesia, NM 88210
DISTRICT III
1000 Rio Brazos Rd., Aztec, NM 87410
DISTRICT IV
2040 South Pacheco St., Santa Fe, NM 87505

State of New Mexico
Energy, Minerals and Natural Resources Department

Oil Conservation Division
2040 South Pacheco St.
Santa Fe, NM 87505

Form C-101
Revised February 10, 1994
Instructions on back
Submit to Appropriate District Office
State Lease - 6 Copies
Fee Lease - 5 Copies

☐ AMENDED REPORT

APPLICATION FOR PERMIT TO DRILL, RE-ENTER, DEEPEN, PLUGBACK, OR ADD A ZONE

¹ Operator Name and Address American Inland Resources Company, LLC. P.O. Box 50938 Midland, TX 79710		² OGRID Number 188294
⁴ Property Code 026185	⁵ Property Name NEW MEXICO -AN- STATE	³ API Number 30-025-35297 ⁶ Well No. 19

⁷ Surface Location									
UL or lot no.	Section	Township	Range	Lot Idn	Feet from the	North/South line	Feet from the	East/West line	County
F	22	14-S	33-E		1980	NORTH	1980	WEST	LEA

⁸ Proposed Bottom Hole Location If Different From Surface									
UL or lot no.	Section	Township	Range	Lot Idn	Feet from the	North/South line	Feet from the	East/West line	County
⁹ Proposed Pool 1 SAUNDERS PERMO UPPER PENN					¹⁰ Proposed Pool 2				

¹¹ Work Type Code N	¹² Well Type Code O	¹³ Cable/Rotary R	¹⁴ Lease Type Code S	¹⁵ Ground Level Elevations 4203
¹⁶ Multiple N	¹⁷ Proposed Depth 10100	¹⁸ Formations PENN	¹⁹ Contractor UTI	²⁰ Spud Date 25-Jan-01

²¹ Proposed Casing and Cement Program					
Hole Size	Casing Size	Casing weight/foot	Setting Depth	Sacks of Cement	Estimated TOC
17-1/2"	13-3/8"	48	500	600	CIRC.
12-1/4"	8-5/8"	32	4200	2800	CIRC.
7-7/8"	5-1/2"	17	10100	2220	CIRC.

²² Describe the proposed program. If this is to DEEPEN or PLUG BACK give the data on the present productive zone and proposed new productive zone. Describe the blowout prevention program, if any. Use additional sheets if necessary.

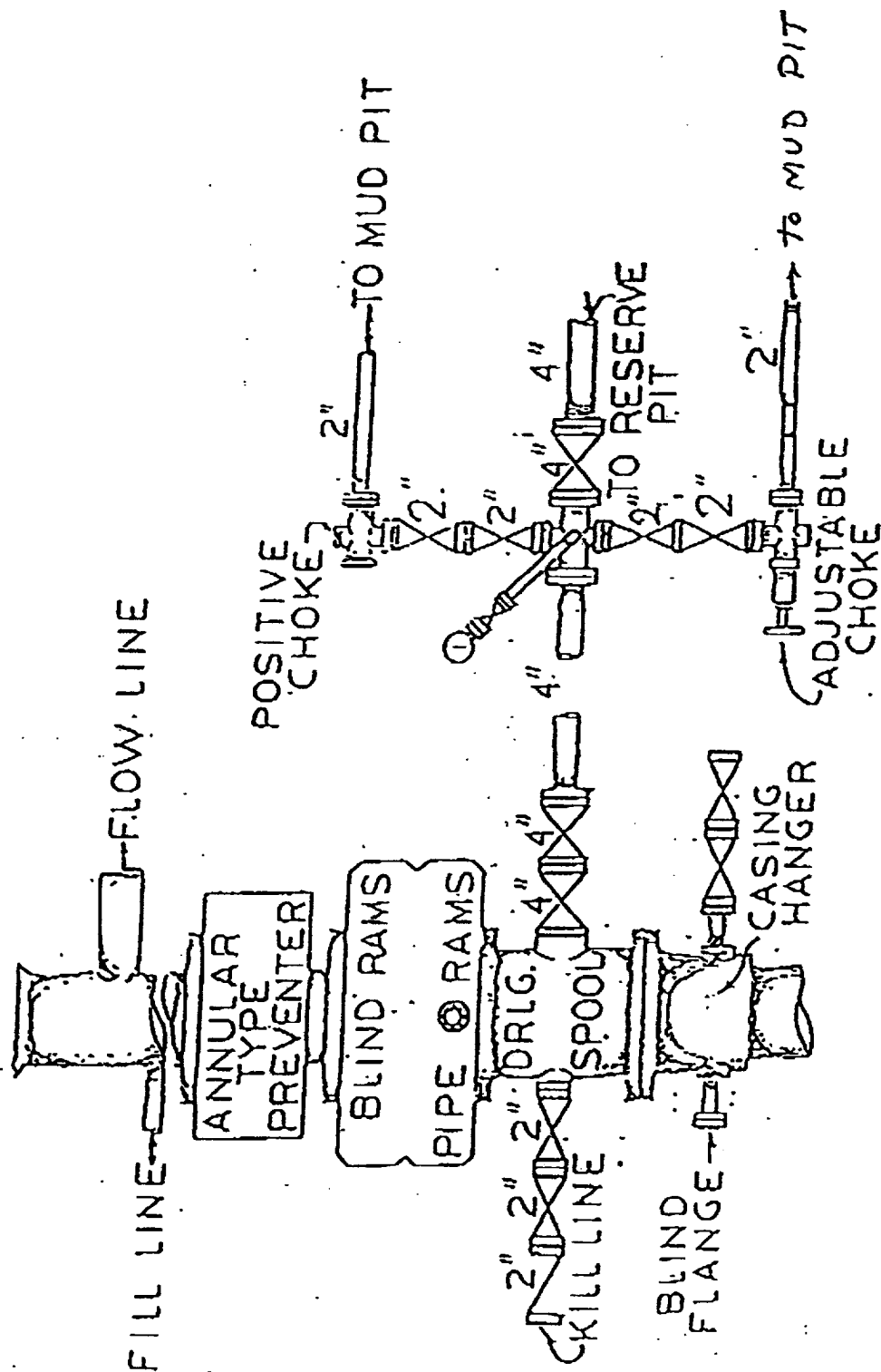
MIRU ROTARY TABLE, DRILL 17-1/2" HOLE TO 500'. SET 13-3/8" 48#/FT CSG. TO 500'. CEMENT WITH ENOUGH CEMENT TO CIRC. TO SURFACE. WOC 24 HOURS.
DRILL OUT CEMENT AND DRILL 12-1/4" HOLE TO 4200'. SET 8-5/8", 32#/FT CSG TO 4200. CEMENT WITH ENOUGH CEMENT TO CIRC. TO SURFACE. WOC 24 HOURS.
DRILL OUT CEMENT AND DRILL 7-7/8" HOLE TO 10,100'. SET 5-1/2", 17#/FT CSG TO 10,100. CEMENT WITH ENOUGH CEMENT TO CIRC. TO SURFACE AND MINIMALLY TO BRING CEMENT HIGHER THAN ZONE OF INTEREST. RDMO ROTARY TABLE AND MIRU COMPLETION UNIT.
COMPLETE WELL AS A PENN PRODUCER.

²³ I hereby certify that the above information is true and complete to the best of my knowledge and belief.		OIL CONSERVATION DIVISION	
Signature: <i>Michael D. Prichard</i>		Approved by: <i>ORIGINAL SIGNATURE OF DIRECTOR</i>	
Printed name: Michael D. Prichard		Title: <i>DEP. 13 2004</i>	
Title: Operations Engineer		Approval Date:	Expiration Date:
Date: December 6, 2000	Phone: 915-685-0981	Conditions of Approval: Attached: <input type="checkbox"/>	

Permit Expires 1 Year From Approval
Date Unless Drilling Underway

UTI Drilling L.P.

B.O.P ARRANGEMENT



ABOVE DATE DOES NOT
INDICATE WHEN
CONFIDENTIAL LOGS
WILL BE RELEASED

ELF

7/3/01