

DISTRICT I
1625 N. French Drive, Hobbs, NM 88240
DISTRICT II
811 South First, Artesia, NM 88210
DISTRICT III
1000 Rio Brazos Rd., Aztec, NM 87410
DISTRICT IV
2040 South Pacheco St., Santa Fe, NM 87505

State of New Mexico
Energy, Minerals and Natural Resources Department

Oil Conservation Division
2040 South Pacheco St.
Santa Fe, NM 87505

Form C-101
Revised February 10, 1994
Instructions on back
Submit to Appropriate District Office
State Lease - 6 Copies
Fee Lease - 5 Copies

☐ AMENDED REPORT

APPLICATION FOR PERMIT TO DRILL, RE-ENTER, DEEPEN, PLUGBACK, OR ADD A ZONE

¹ Operator Name and Address American Inland Resources Company, LLC. P.O. Box 50938 Midland, TX 79710		² OGRID Number 188294
		³ API Number 30-025-35299
⁴ Property Code 026207	⁵ Property Name STATE 31	⁶ Well No. 4

⁷ Surface Location									
UL or lot no. K	Section 31	Township 13-S	Range 33-E	Lot Idn	Feet from the 1980	North/South line SOUTH	Feet from the 1980	East/West line WEST	County LEA

⁸ Proposed Bottom Hole Location If Different From Surface									
UL or lot no.	Section	Township	Range	Lot Idn	Feet from the	North/South line	Feet from the	East/West line	County
⁹ Proposed Pool 1 BAUM UPPER PENN					¹⁰ Proposed Pool 2				

¹¹ Work Type Code N	¹² Well Type Code O	¹³ Cable/Rotary R	¹⁴ Lease Type Code S	¹⁵ Ground Level Elevations 4282
¹⁶ Multiple N	¹⁷ Proposed Depth 10000	¹⁸ Formations PENN	¹⁹ Contractor UTI	²⁰ Spud Date 16-May-01

²¹ Proposed Casing and Cement Program					
Hole Size	Casing Size	Casing weight/foot	Setting Depth	Sacks of Cement	Estimated TOC
17-1/2"	13-3/8"	48	500	600	CIRC.
12-1/4"	8-5/8"	32	4200	2800	CIRC.
7-7/8"	5-1/2"	17	10000	2220	CIRC.

²² Describe the proposed program. If this is to DEEPEN or PLUG BACK give the data on the present productive zone and proposed new productive zone. Describe the blowout prevention program, if any. Use additional sheets if necessary.

MIRU ROTARY TABLE, DRILL 17-1/2" HOLE TO 500'. SET 13-3/8" 48#/FT CSG. TO 500'. CEMENT WITH ENOUGH CEMENT TO CIRC. TO SURFACE. WOC 24 HOURS.
DRILL OUT CEMENT AND DRILL 12-1/4" HOLE TO 4200'. SET 8-5/8", 32#/FT CSG TO 4200. CEMENT WITH ENOUGH CEMENT TO CIRC. TO SURFACE. WOC 24 HOURS.
DRILL OUT CEMENT AND DRILL 7-7/8" HOLE TO 10,000'. SET 5-1/2", 17#/FT CSG TO 10,100. CEMENT WITH ENOUGH CEMENT TO CIRC. TO SURFACE AND MINIMALLY TO BRING CEMENT HIGHER THAN ZONE OF INTEREST. RDMO ROTARY TABLE AND MIRU COMPLETION UNIT.
COMPLETE WELL AS A PENN PRODUCER.

²³ I hereby certify that the above information is true and complete to the best of my knowledge and belief.		OIL CONSERVATION DIVISION	
Signature: <i>Michael D. Prichard</i>		Approved by:	
Printed name: Michael D. Prichard		Title:	
Title: Operations Engineer		Approval Date:	
Date: December 6, 2000	Phone: 915-685-0981	Expiration Date:	
		Conditions of Approval:	
		Attached: <input type="checkbox"/>	

Permit Expires 1 Year From Approval
Date Unless Drilling Underway

MP

District II
P.O. Drawer DD, Artesia, NM 88211-0719

District III
300 Rio Brasos Rd., Aztec, NM 87410

District IV
P.O. Box 2088, Santa Fe, NM 87504-2088

OIL CONSERVATION DIVISION

P.O. Box 2088
Santa Fe, NM 87504-2088

☐ AMENDED REPORT

WELL LOCATION AND ACREAGE DEDICATION PLAT

1 API Number 30-025-35299	2 Pool Code 4940	3 Pool Name Baum; Upper Perm
4 Property Code 26207	5 State 31	6 Well Number 4
7 OGRID No. 188294	8 Operator Name American Inland Resources Company, LLC	9 Elevation 4282

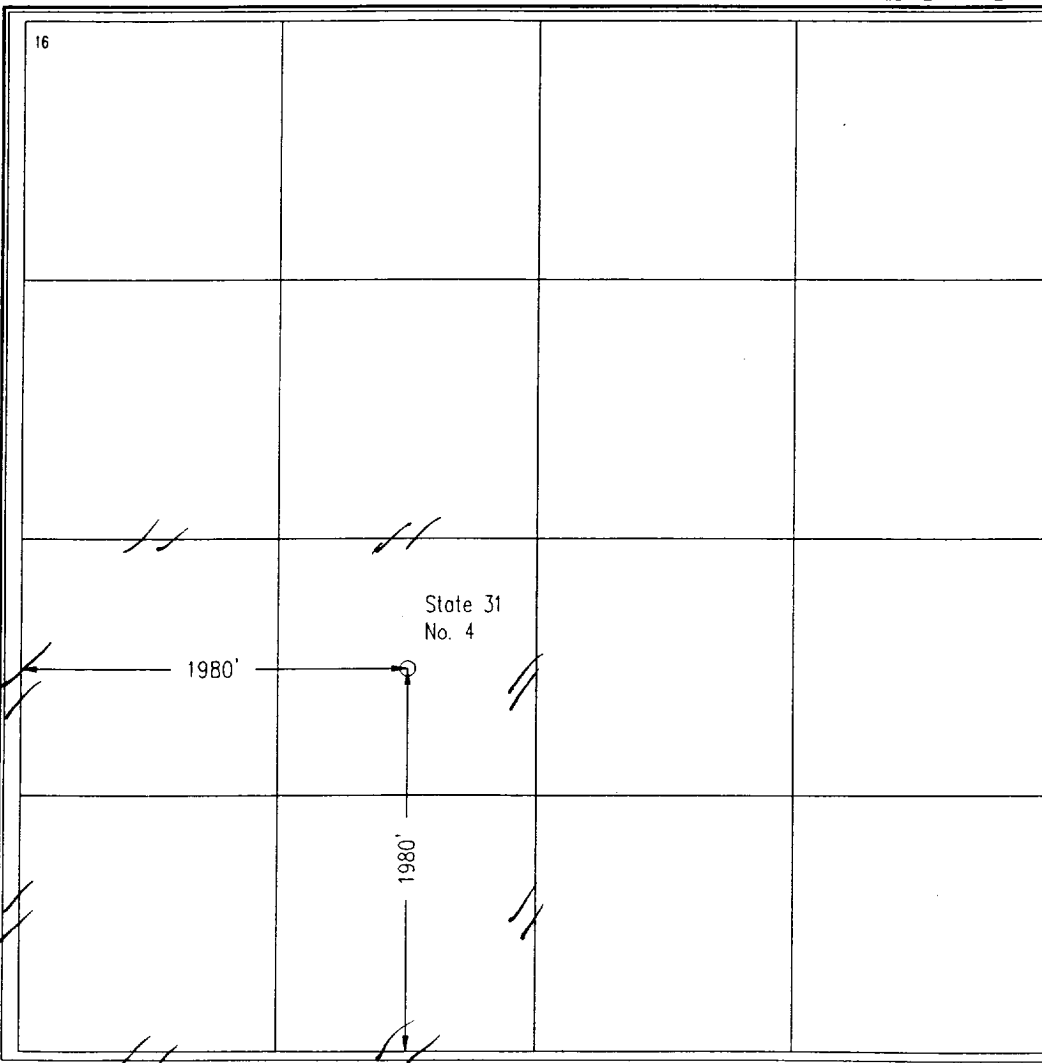
10 Surface Location

UL or lot no.	Section	Township	Range	Lot Idn	Feet from the	North/South line	Feet from the	East/West line	County
K	31	13 S	33 E		1980	South	1980	West	Lea

11 Bottom Hole Location If Different From Surface

12 Dedicated Acres 160	13 Joint or Infill	14 Consolidation Code	15 Order No.
-------------------------------------	-----------------------	--------------------------	-----------------

NO ALLOWABLE WILL BE ASSIGNED TO THIS COMPLETION UNIT. ALL INTERESTS HAVE BEEN CONSOLIDATED
OR A NON-STANDARD UNIT HAS BEEN APPROVED BY THE DIVISION



<p>17 OPERATOR CERTIFICATION</p> <p><i>I hereby certify that the information contained herein is true and complete to the best of my knowledge and belief.</i></p> <p>Michael D. Prichard Signature Michael D. Prichard Printed Name Operations Engineer Title Dec. 6, 2000 Date</p>	<p>18 SURVEYOR CERTIFICATION</p> <p><i>I hereby certify that the well location shown on this plat was plotted from field notes of actual surveys made by me or under my supervision, and that the same is true and correct to the best of my belief.</i></p> <p>November 14, 2000 Date of Survey Signature and Seal of Professional Surveyor.</p> <p>MICHAEL L. STANFORD NEW MEXICO REGISTERED PROFESSIONAL LAND SURVEYOR 10324</p> <p>Michael L. Stanford Certificate Number 10324</p>
--	--

UTI Drilling L.P.

B.O.P. ARRANGEMENT

