

DISTRICT I
1625 N. French Dr., Hobbs, NM 88240

DISTRICT II
811 South First, Artesia, NM 88210

DISTRICT III
1000 Rio Brazos Rd., Aztec, NM 87410

DISTRICT IV
2040 South Pacheco, Santa Fe, NM 87501

State of New Mexico
Energy, Minerals and Natural Resources Department

OIL CONSERVATION DIVISION

PO BOX 2088
Santa Fe, NM 87504-2088

Form C-101

Revised March 17, 1999
Instructions on back
Submit to appropriate District Office
State Lease - 6 Copies
Fee Lease - 5 Copies

☐ AMENDED REPORT

APPLICATION FOR PERMIT TO DRILL, RE-ENTER, DEEPEN, PLUGBACK, OR ADD A ZONE

¹ Operator Name and Address Yates Petroleum Corporation 105 South Fourth Street Artesia, New Mexico 88210		² OGRID Number 025575
		³ API Number 30-025-35327
⁴ Property Code 27052	⁵ Property Name North Papalotes State Unit	⁶ Well No. 1

⁷ Surface Location

UL or lot no.	Section	Township	Range	Lot Idn	Feet from the	North/South Line	Feet from the	East/West Line	County
A	36	14S	34E		990'	North	660'	East	Lea

⁸ Proposed Bottom Hole Location If Different From Surface

UL or lot no.	Section	Township	Range	Lot Idn	Feet from the	North/South Line	Feet from the	East/West Line	County
⁹ Proposed Pool 1 Wildcat Mississippian					¹⁰ Proposed Pool 2				

¹¹ Work Type Code N	¹² Well Type Code G	¹³ Cable/Rotary R	¹⁴ Lease Type Code S	¹⁵ Ground Level Elevation 4064'
¹⁶ Multiple No	¹⁷ Proposed Depth 13,950'	¹⁸ Formation Mississippian	¹⁹ Contractor Not Determined	²⁰ Spud Date ASAP

²¹ Proposed Casing and Cement Program

Hole Size	Casing Size	Casing weight/feet	Setting Depth	Sacks of Cement	Estimated TOC
14 3/4"	11 3/4"	42#	400'	400 sx	Circulate
11"	8 5/8"	32#	6000'	1600 sx	Circulate
7 7/8"	5 1/2"	17# & 20#	13950'	900 sx	TOC-7300'

²² Describe the proposed program. If this application is to DEEPEN or PLUG BACK give the data on the present productive zone and proposed new productive zone. Describe the blowout prevention program, if any. Use additional sheets if necessary.

SEE ATTACHED SHEETS

Permit Expires 1 Year From Approval
Date Unless Drilling Underway

²³ I hereby certify that the information given above is true and complete to the best of my knowledge and belief. Signature: <i>Clifton R. May</i>		OIL CONSERVATION DIVISION	
Printed name: Clifton R. May		Approved by: <i>[Signature]</i>	
Title: Regulatory Agent		Title:	
Date: December 21, 2000		Approval Date: <i>[Date]</i>	Expiration Date:
Phone: (505) 748-1471		Conditions of Approval Attached <input type="checkbox"/>	

[Signature]
dp

DISTRICT I
1626 E. French Dr., Hobbs, NM 88240

DISTRICT II
811 South First, Artesia, NM 88210

DISTRICT III
1000 Rio Brazos Rd., Aztec, NM 87410

DISTRICT IV
2048 South Pacheco, Santa Fe, NM 87505

State of New Mexico
Energy, Minerals and Natural Resources Department

Form C-102
Revised March 17, 1999
Instruction on back
Submit to Appropriate District Office
State Lease - 4 Copies
Fee Lease - 3 Copies

OIL CONSERVATION DIVISION
P.O. Box 2088
Santa Fe, New Mexico 87504-2088

☐ AMENDED REPORT

WELL LOCATION AND ACREAGE DEDICATION PLAT

API Number 30-025-35327	Pool Code -	Pool Name WILDCAT MISSISSIPPIAN
Property Code 27052	Property Name NORTH PAPALOTES STATE UNIT	Well Number 1
OGED No. 025575	Operator Name YATES PETROLEUM CORPORATION	Elevation 4064

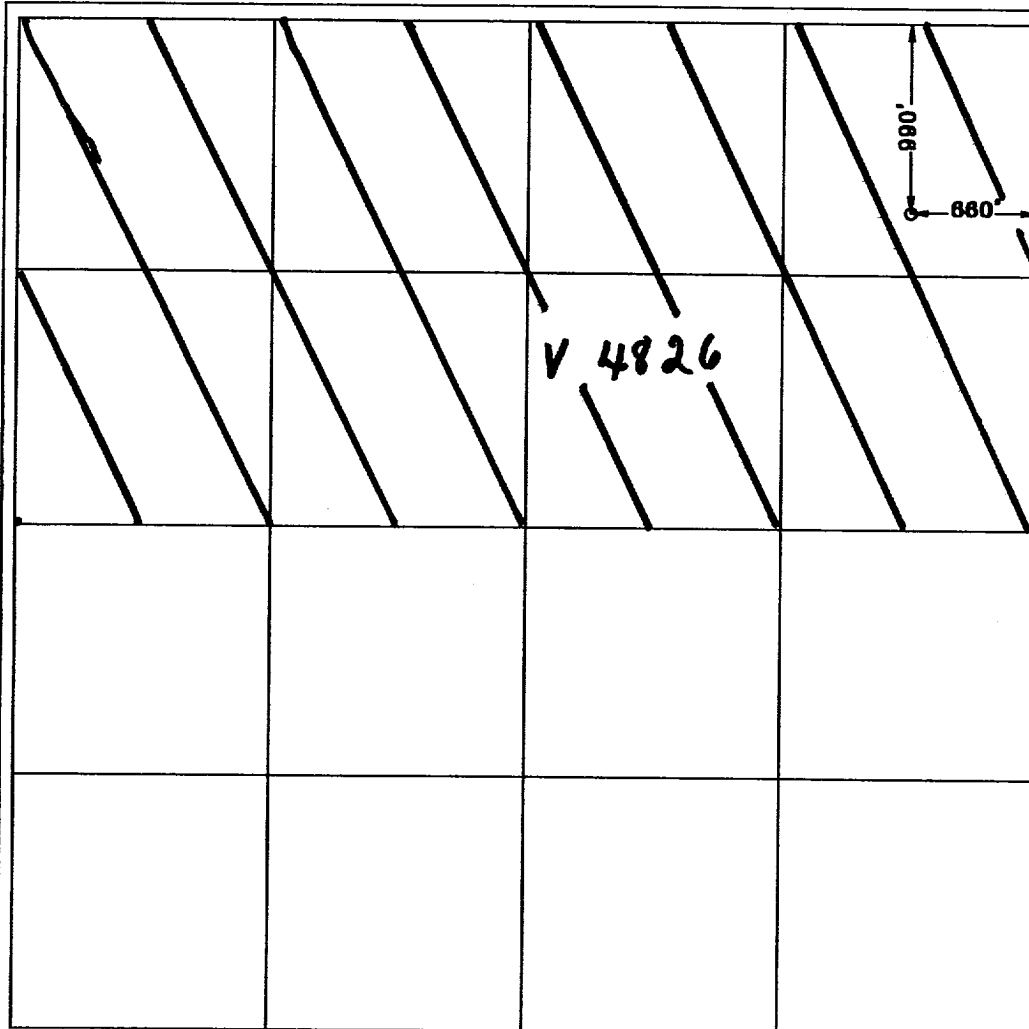
Surface Location

UL or lot No. A	Section 36	Township 14S	Range 34E	Lot Idn	Feet from the 990	North/South line NORTH	Feet from the 660	East/West line EAST	County LEA
---------------------------	----------------------	------------------------	---------------------	---------	-----------------------------	----------------------------------	-----------------------------	-------------------------------	----------------------

Bottom Hole Location If Different From Surface

UL or lot No.	Section	Township	Range	Lot Idn	Feet from the	North/South line	Feet from the	East/West line	County
Dedicated Acres 320	Joint or Infill	Consolidation Code	Order No.						

NO ALLOWABLE WILL BE ASSIGNED TO THIS COMPLETION UNTIL ALL INTERESTS HAVE BEEN CONSOLIDATED
OR A NON-STANDARD UNIT HAS BEEN APPROVED BY THE DIVISION



OPERATOR CERTIFICATION I hereby certify the the information contained herein is true and complete to the best of my knowledge and belief. Clifton R. May Signature CLIFTON R. MAY Printed Name REGULATORY AGENT Title 12-21-2000 Date
SURVEYOR CERTIFICATION I hereby certify that the well location shown on this plat was plotted from field notes of actual surveys made by me or under my supervision, and that the same is true and correct to the best of my belief. 11/21/2000 Date Surveyed HERNANDEZ Signature NEW MEXICO Professional Surveyor 3640 Certificate No. HERNANDEZ Professional Surveyor DISK 36 GENERAL SURVEYING COMPANY

YATES PETROLEUM CORPORATION
NORTH PAPALOTES STATE UNIT #1

990' FNL and 660' FEL
Section 36-T14S-R34E
Lea County, New Mexico

DRILLING PROGNOSIS

1. ESTIMATED TOPS OF IMPORTANT GEOLOGIC MARKERS

Rustler	1,870'	Strawn	12,025'
Yates	2,975'	Atoka	12,175'
San Andres	4,475'	Morrow Lime	13,240'
Glorieta	6,080'	Austin	13,675'
Tubb	7,440'	Chester	13,775'
Abo	8,210'	Mississippi Lime	13,850'
Wolfcamp	9,850'	TD	13,950'

2. PRESSURE CONTROL EQUIPMENT

A 5000 PSI BOPE System will be nipped up on the 8 5/8" casing and tested daily for Operational. See the attached 5000 PSI schematic.

3. THE PROPOSED CASING PROGRAM

Hole Size	Casing Size	Wt./Ft.	Grade	Joint	Interval
14 3/4"	11 3/4"	42#	H-40	ST&C	0-400'
11"	8 5/8"	32#	J-55	ST&C	0-6000'
7 7/8"	5 1/2"	17# & 20#	L-80, J-55, N-80, S-95, P-110	LT&C	0-13950'

4. Cementing Program:

Surface Casing - Set with approximately 400 class C + 2% CaCl₂ (YLD 1.32 WT 15.6).

Intermediate Casing-Set with approximately 1200 sx Lite (YLD 2.01 WT 12.0). Tail in with 200 sx Class C (YLD 1.32 WT 15.6). Circulated.

Production Casing-Set with approximately 900 sx Super C Modified (YLD 1.67 WT 13.0). Top of cement approximately 7,300'.

YATES PETROLEUM CORPORATION

North Papalotes State Unit #1

Page 2

The above cement volumes are approximate and were calculated under the assumption that a gauge hole will be achieved. Actual cement volumes may vary due to variations in the actual hole gauge and will be determined by running a caliper log on the drilled hole.

All waiting on cement (WOC) times will be adequate to achieve a minimum of 500 psi compressive strength at the casing shoe prior to drilling out.

5. MUD PROGRAM - Visual Monitoring

Interval	Mud Type	Weight	Viscosity	Fluid Loss
0 - 400'	FW Gel	8.6-9.2	28-34	No Control
400'-6000'	Cut Brine going to Brine	9.1-10.4	28-32	No Control
6000'-7900'	Cut Brine	9.0-9.8	28	No Control
7900'-12200'	Brine/S. Gel/Diesel	9.8-10	34-40	No Control
12200'-TD	Salt Gel/Starch	9.8-10	35-42	<12

Sufficient mud material(s) to maintain mud properties, control lost circulation and contain a blowout will be available at the well site during drilling operations.

6. EVALUATION PROGRAM

Logs: LDT/CNL; HALS GR; BHC SONIC TD to 6,000'. GR/Neutron to surface.

DST's: As Warranted.

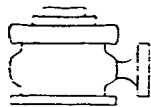
Samples: 10' samples from beneath intermediate casing to TD.

Cores: Possible sidewall over Atoka, Morrow & Mississippian.

The evaluation program may change at the discretion of the well site geologist.

7. ABNORMAL CONDITIONS

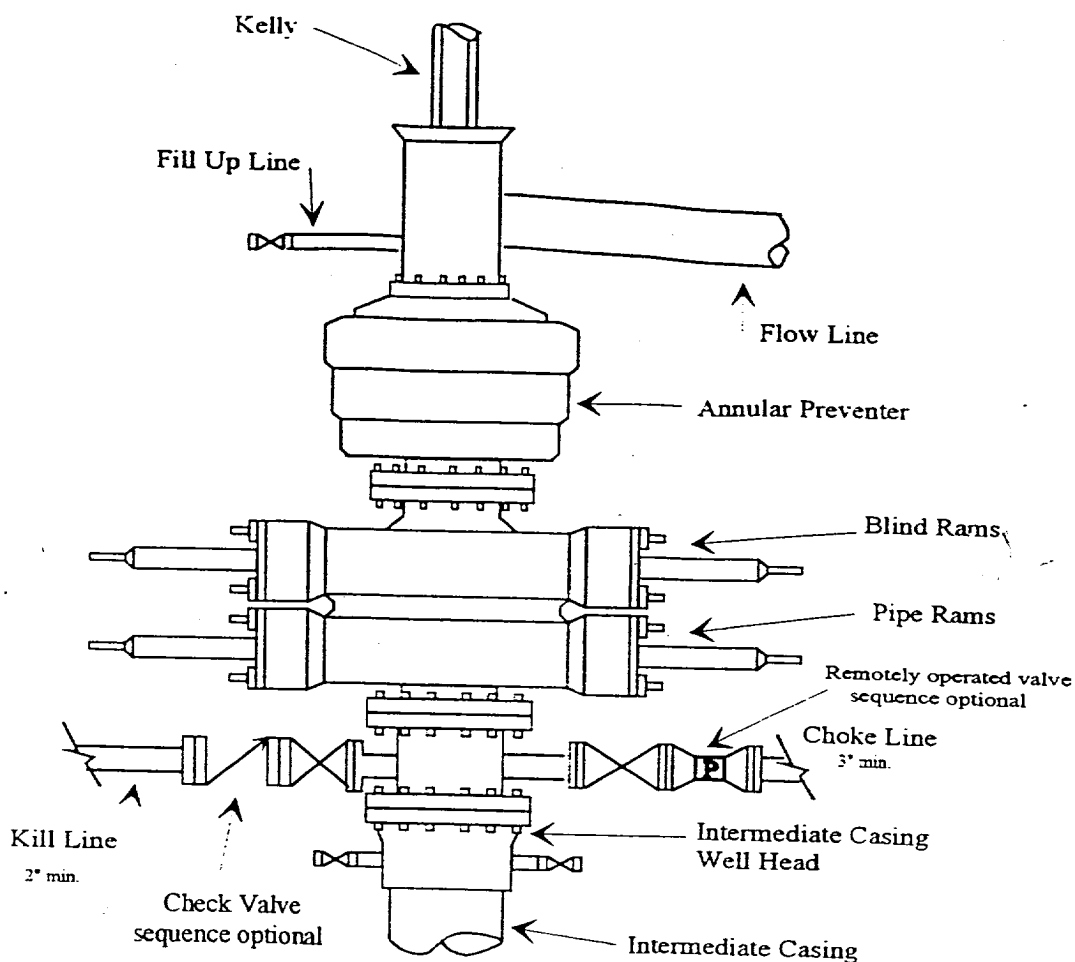
No abnormal temperatures or pressures are anticipated. No H₂S has been encountered in or known to exist from previous wells drilled to similar depths in the general area.



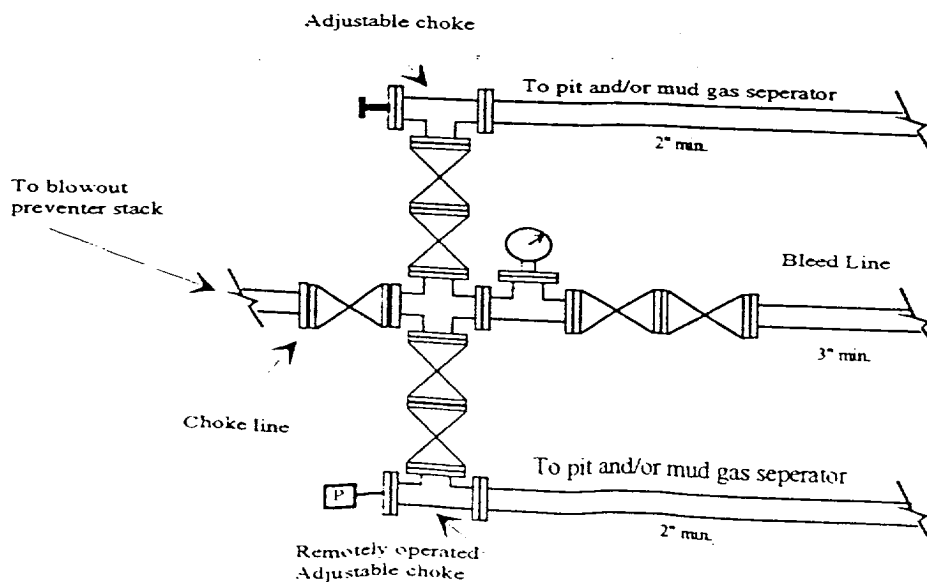
Yates Petroleum Corporation

BOP-4

Typical 5,000 psi Pressure System Schematic Annular with Double Ram Preventer Stack



Typical 5,000 psi choke manifold assembly with at least these minimum features



ABOVE DATE DOES NOT
INDICATE WHEN
CONFIDENTIAL LOGS
WILL BE RELEASED

ELF

12/31/71