

NEW MEXICO OIL CONSERVATION COMMISSION
Santa Fe, New Mexico

NOTICE OF INTENTION TO DRILL OR RECOMPLETE

Notice must be given to the District Office of the Oil Conservation Commission and approval obtained before drilling or recompletion begins. If changes in the proposed plan are considered advisable, a copy of this notice showing such changes will be returned to the sender. Submit this notice in QUINTUPPLICATE. One copy will be returned following approval. See additional instructions in Rules and Regulations of the Commission. If State Land submit 6 Copies

Wichita, Kansas

(Place)

September 24, 1956

(Date)

OIL CONSERVATION COMMISSION
SANTA FE, NEW MEXICO

Gentlemen:

You are hereby notified that it is our intention to commence the (Drilling) (Recompletion) of a well to be known as

The Vickers Petroleum Company, Inc.

(Company or Operator)

State "C"

(Lease)

Well No. 1

in B

(Unit)

The well is

located 660' feet from the North line and 1980' feet from the

East

line of Section 14

T. 12-S

R. 34-E, NMPM.

(GIVE LOCATION FROM SECTION LINE)

Wildcat

Pool,

Lea

County

If State Land the Oil and Gas Lease is No. E-1027

If patented land the owner is

Address

We propose to drill well with drilling equipment as follows: Cable tools to approximately 400' and rotary tools to total depth.

The status of plugging bond is Blanket bond

Drilling Contractor To be selected Aldridge & Stroud, Odessa, Texas will furnish cable tools, rotary contr. will be selected at a later date.

We intend to complete this well in the Siluro-Devonian Formation

formation at an approximate depth of 14,000' feet.

CASING PROGRAM

We propose to use the following strings of Casing and to cement them as indicated:

Size of Hole	Size of Casing	Weight per Foot	New or Second Hand	Depth	Sacks Cement
17 1/2"	13 3/8"	48#	New	360'	300
13 3/4"	9 5/8"	36#	New	4200'	3000
9"	7"	26#, 29#, 32#	New	14,000'	600

If changes in the above plans become advisable we will notify you immediately.

ADDITIONAL INFORMATION (If recompletion give full details of proposed plan of work.)

Approved _____, 19____
Except as follows:

OIL CONSERVATION COMMISSION

By _____

Sincerely yours,

The Vickers Petroleum Company, Inc.

(Company or Operator)

By H. L. Peel

Position Staff Engineer

Send Communications regarding well to

Name The Vickers Petroleum Company, Inc.

Address 610 Union Center

Handwritten marks at the bottom left of the page.

NEW MEXICO
OIL CONSERVATION COMMISSION

Form C-128

Well Location and Production Plat

Date September 21, 1956

Operator Vickers Petroleum Company Inc. Lease State of New Mexico

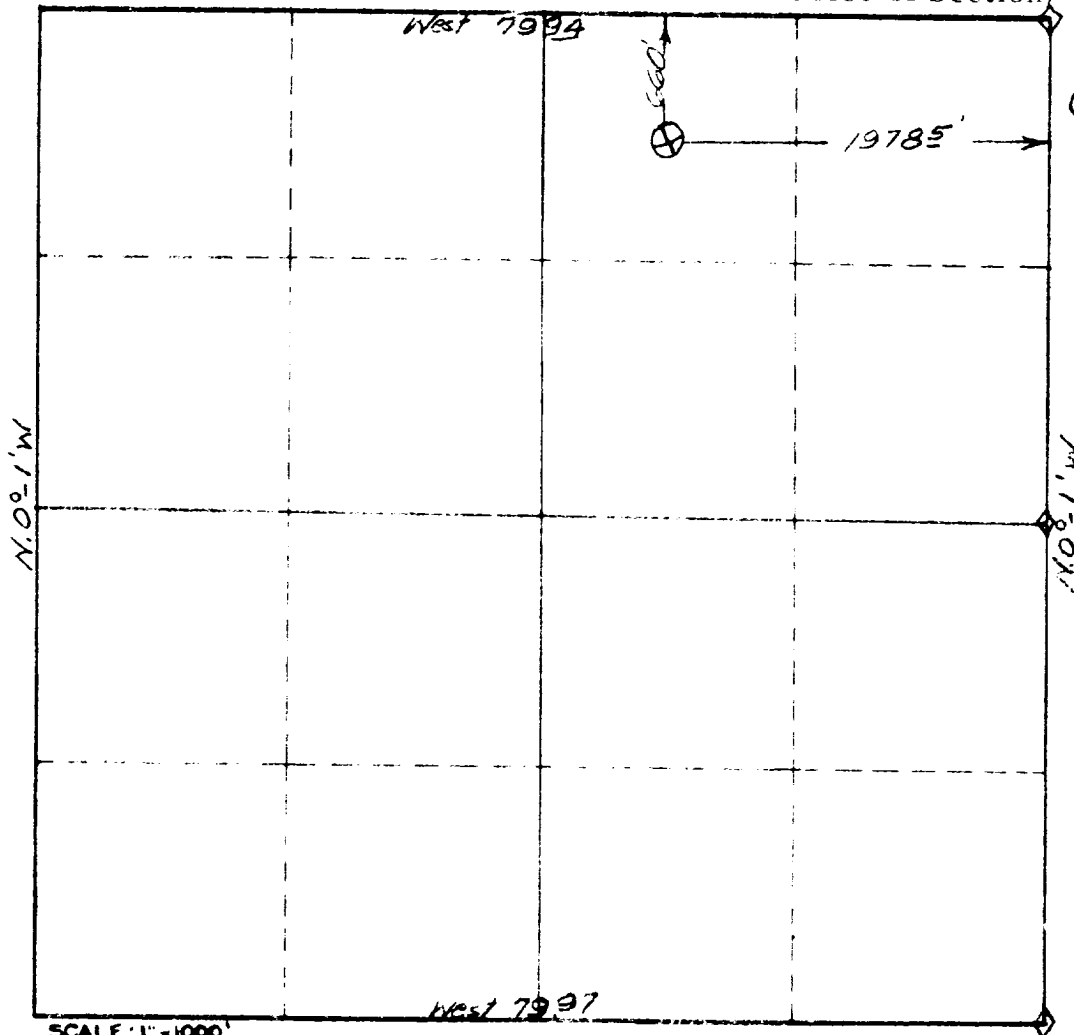
Well No. 1 Section 14 Township 12 South Range 34 East NMPM

Located 660 Feet From North Line, 1978.5 Feet From East Line,

Lea County, New Mexico G. L. Elevation 4146.2

Name of Producing Formation _____ Pool _____ Dedicated Acreage 40

(Note: All distances must be from outer boundaries of Section)



LEGEND:

- ⊗ - Staked well location
- ◇ - GLO Marked Rock

1. Is this Well a Dual Comp.? Yes ___ No X

2. If the answer to Question 1 is yes, are there any other dually completed wells within the dedicated acreage? Yes ___ No ___

This is to certify that the above plat was prepared from field notes of actual surveys made by me or under my supervision and that the same are true and correct to the best of my knowledge and belief.

Name J. P. Reel

Position STAFF ENGR.

Representing Vickers Pet. Co. INC.

Address 610 UNION Center Wichita, Kan

Date Surveyed September 20, 1956

Registered Professional Engineer and/or Land Surveyor License No. 1559