

NUMBER OF COPIES RECEIVED	
DISTRIBUTION	
SANTA FE	
FILE	
U.S.G.S.	
LAND OFFICE	
TRANSPORTER	OIL GAS
PRODUCTION OFFICE	
OPERATOR	

NEW MEXICO OIL CONSERVATION COMMISSION  
Santa Fe, New Mexico

HOBBS OFFICE O. C. C.  
Nov 18 21 AM '65

NOTICE OF INTENTION TO DRILL

Notice must be given to the District Office of the Oil Conservation Commission and approval obtained before drilling or recompletion begins. If changes in the proposed plan are considered advisable, a copy of this notice showing such changes will be returned to the sender. Submit this notice in QUINTUPPLICATE. One copy will be returned following approval. See additional instructions in Rules and Regulations of the Commission. If State Land submit 6 Copies. Attach Form C-128 in triplicate to first 3 copies of Form C-101.

Roswell, New Mexico

November 17, 1965

(Place)  
OIL CONSERVATION COMMISSION  
SANTA FE, NEW MEXICO

Gentlemen:

You are hereby notified that it is our intention to commence the Drilling of a well to be known as

**Jack L. McClellan**

(Company or Operator) **Kimmittz**, Well No. **1**, in **F** (Unit) The well is located **1980** (Lease) feet from the **North** line and **1980** feet from the **West** line of Section **10**, T **6-South**, R **36-East**, NMPM. (GIVE LOCATION FROM SECTION LINE) **Wildcat** Pool, **Roosevelt** County

D	C	E	A
E	<b>Q</b>	G	H
L	K	J	I
M	N	O	P

If State Land the Oil and Gas Lease is No. **A. A. Kimmittz**  
If patented land the owner is **917 East Green Acres, Hobbs, New Mexico**  
Address **Rotary from surface to 4800'**  
We propose to drill well with drilling equipment as follows:  
The status of plugging bond is **Statewide**  
Drilling Contractor **Verna Drilling Company, Levelland, Texas**  
We intend to complete this well in the **San Andres** formation at an approximate depth of **4600 - 4800** feet.

CASING PROGRAM

We propose to use the following strings of Casing and to cement them as indicated:

Size of Hole	Size of Casing	Weight per Foot	New or Second Hand	Depth	Sacks Cement
<b>11"</b>	<b>8-5/8"</b>	<b>20#</b>	<b>New</b>	<b>300'</b>	<b>Circ.</b>
<b>7-7/8"</b>	<b>4-1/2"</b>	<b>9.5#</b>	<b>New</b>	<b>4800'</b>	<b>150 sx.</b>

If changes in the above plans become advisable we will notify you immediately.

ADDITIONAL INFORMATION (If recompletion give full details of proposed plan of work.)

This notice replaces a Notice of Intention to Drill filed by Max Wilson of the No. **1** Kimmittz in April, 1965.

Approved \_\_\_\_\_, 19\_\_\_\_  
Except as follows:

Sincerely yours,

**Jack L. McClellan**

(Company or Operator)

By **Jack L. McClellan**  
Operator

Position \_\_\_\_\_  
Send Communications regarding well to

Name **Jack L. McClellan**

Address **Box 848, Roswell, New Mexico**

OIL CONSERVATION COMMISSION  
By **Jack L. McClellan**

APPROVAL PAID  
12 DAYS UNPAID  
11/18/65

NUMBER OF COPIES RECEIVED	
DISTRIBUTION	
SANTA FE	
FILE	
U.S.G.S.	
LAND OFFICE	
TRANSPORTER	OIL GAS
PRODUCTION OFFICE	
OPERATOR	

**NEW MEXICO OIL CONSERVATION COMMISSION**  
**WELL LOCATION AND ACREAGE DEDICATION PLAT**  
 SEE INSTRUCTIONS FOR COMPLETING THIS FORM ON THE REVERSE SIDE C.

FORM C-128  
Revised 5/1/57

NOV 19 11 21 AM '65  
 RECEIVED  
 O.C.C.

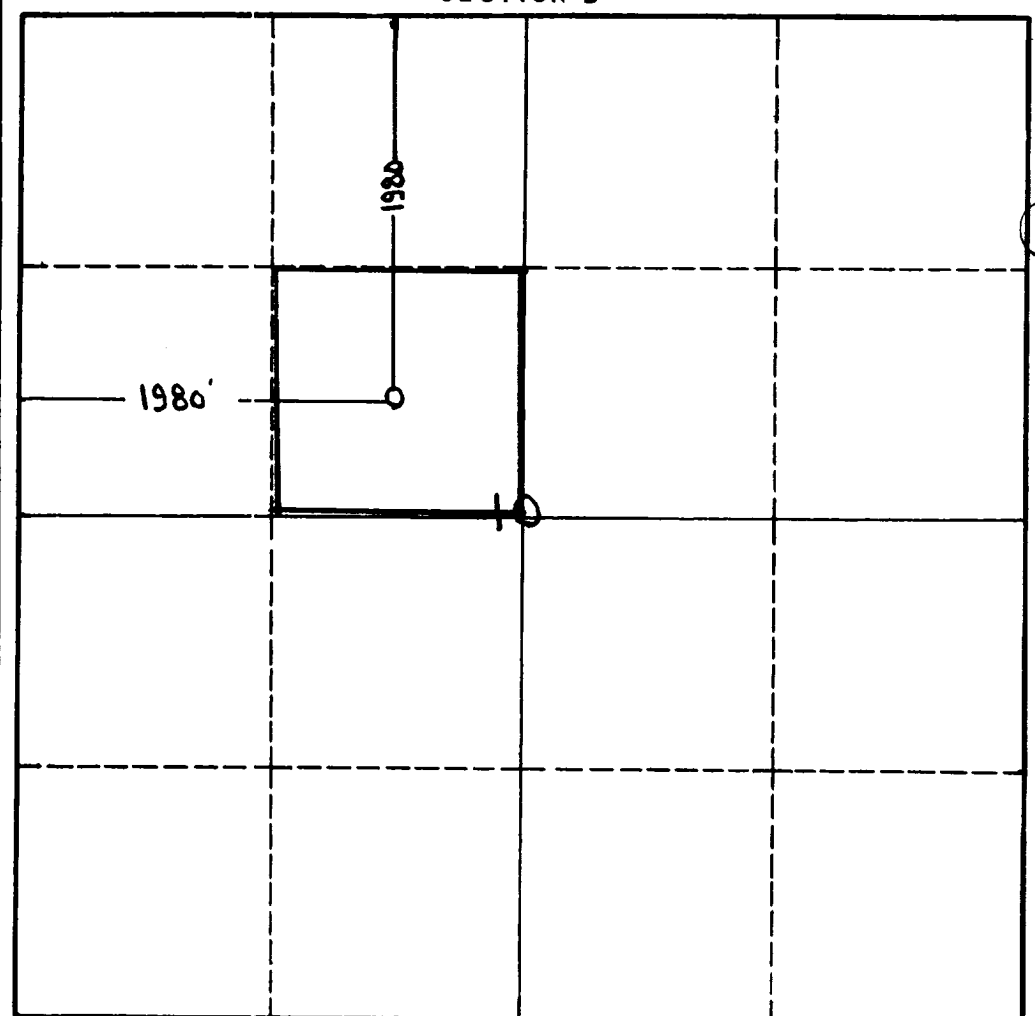
**SECTION A**

Operator <b>Jack L. McClellan</b>		Lease <b>Kinnitz</b>		Well No. <b>1</b>
Unit Letter <b>F</b>	Section <b>10</b>	Township <b>6-South</b>	Range <b>36-East</b>	County <b>Roosevelt County, New Mexico</b>
Actual Footage Location of Well: <b>1980</b> feet from the <b>North</b> line and <b>1980</b> feet from the <b>West</b> line				
Ground Level Elev. <b>4126 G. L.</b>	Producing Formation <b>San Andres</b>	Pool <b>Wildcat</b>	Dedicated Acreage: <b>40</b> Acres	

1. Is the Operator the only owner in the dedicated acreage outlined on the plat below? YES ☒ NO \_\_\_\_ . ("Owner" means the person who has the right to drill into and to produce from any pool and to appropriate the production either for himself or for himself and another. (65-3-2) (e) NMSA 1935 Comp.)
2. If the answer to question one is "no," have the interests of all the owners been consolidated by communitization agreement or otherwise? YES \_\_\_\_ NO \_\_\_\_ . If answer is "yes," Type of Consolidation \_\_\_\_\_
3. If the answer to question two is "no," list all the owners and their respective interests below:

Owner	Land Description

**SECTION B**



**CERTIFICATION**

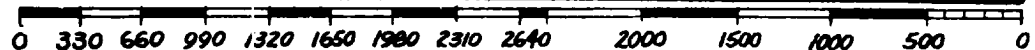
I hereby certify that the information in SECTION A above is true and complete to the best of my knowledge and belief.

Name	<b>Jack L. McClellan</b>
Position	<b>Operator</b>
Company	<b>Jack L. McClellan</b>
Date	<b>November 17, 1965</b>

I hereby certify that the well location shown on the plat in SECTION B was plotted from field notes of actual surveys made by me or under my supervision, and that the same is true and correct to the best of my knowledge and belief.

Date Surveyed	
Registered Professional Engineer and/or Land Surveyor	

Certificate No. \_\_\_\_\_



## INSTRUCTIONS FOR COMPLETION OF FORM C-128

1. Operator shall furnish and certify to the information called for in Section A.
2. Operator shall outline the dedicated acreage for *both* oil and gas wells on the plat in Section B.
3. A registered professional engineer or land surveyor registered in the State of New Mexico or approved by the Commission shall show on the plat the location of the well and certify this information in the space provided.
4. All distances shown on the plat must be from the outer boundaries of the Section.
5. If additional space is needed for listing owners and their respective interests as required in question 3 of Section A, please use space below.