

NO. OF COPIES RECEIVED	
DISTRIBUTION	
SANTA FE	
FILE	
U.S.G.S.	
LAND OFFICE	
OPERATOR	

# NEW MEXICO OIL CONSERVATION COMMISSION

Form C-101  
Revised 1-1-65

5A. Indicate Type of Lease
STATE <input type="checkbox"/> FEE <input checked="" type="checkbox"/>

5. State Oil & Gas Lease No.
------------------------------

## APPLICATION FOR PERMIT TO DRILL, DEEPEN, OR PLUG BACK

1a. Type of Work		7. Unit Agreement Name	
b. Type of Well OIL WELL <input checked="" type="checkbox"/> GAS WELL <input type="checkbox"/> OTHER <input type="checkbox"/>		8. Farm or Lease Name <b>J. G. Capps</b>	
2. Name of Operator <b>Sunray DX Oil Company</b>		9. Well No. <b>1</b>	
3. Address of Operator <b>P. O. Box 1416 - Roswell, New Mexico</b>		10. Field and Pool, or Wildcat <b>Wildcat</b>	
4. Location of Well UNIT LETTER <b>E</b> LOCATED <b>1980</b> FEET FROM THE <b>North</b> LINE AND <b>660</b> FEET FROM THE <b>West</b> LINE OF SEC. <b>8</b> TWP. <b>3-S</b> RGE. <b>35-E</b> NMPM		12. County <b>Roosevelt</b>	
19. Proposed Depth <b>4500</b>		19A. Formation <b>San Andres</b>	
20. Rotary or C.T. <b>Rotary</b>		21. Elevations (Show whether DF, RT, etc.) <b>Will furnish later</b>	
21A. Kind & Status Plug. Bond <b>Approved</b>		21B. Drilling Contractor <b>Cactus Drilg. Co.</b>	
22. Approx. Date Work will start <b>2-26-68</b>			

## PROPOSED CASING AND CEMENT PROGRAM

SIZE OF HOLE	SIZE OF CASING	WEIGHT PER FOOT	SETTING DEPTH	SACKS OF CEMENT	EST. TOP
12-1/4	8-5/8	24#	400'	250 sx	Surface
7-7/8	4-1/2	9.5#	4500'	300 sx	3000'

1. Drill 12-1/4" hole to approx. 400'. Run 8-5/8" csg to CP 400'. Cmt w/250 sx reg. cmt. w/2% CaCl<sub>2</sub>. Circ to surface. WOC 18 hrs. Test BOP & csg to 1000# for 30 min.
2. Drill 7-7/8" hole to approx TD of 4500'. Anticipate two 50' cores @ approx. 3640' & 3750'. Run Open Hole Logs - Density, Sonic, Sidewall Neutron, Laterolog and Microlaterolog.
3. Run 4-1/2" csg to approx. CP of 4500'. Cmt w/300 sx 50-50 Incore Poz w/approx. 8# salt per sx. WOC 24 hrs. Test BOP & csg to 1500# for 30 min. Run Temp. Survey.
4. Perf selected intervals w/1 - 1/2" bullet per interval.
5. Acidize w/250 gal. XFW acid per interval.
6. If necessary frac down csg w/30,000 gal. crude and 40,000# sand w/Adomite 1/40# per gal. Limit surface pressure to 4000 psig.
7. Recover load.
8. Test and place well on production.

**NOTE: Verbal Approval (2-26-68)**

IN ABOVE SPACE DESCRIBE PROPOSED PROGRAM: IF PROPOSAL IS TO DEEPEN OR PLUG BACK, GIVE DATA ON PRESENT PRODUCTIVE ZONE AND PROPOSED NEW PRODUCTIVE ZONE. GIVE BLOWOUT PREVENTER PROGRAM, IF ANY.

I hereby certify that the information above is true and complete to the best of my knowledge and belief.

Signed Ralph L. Maness Title Acting District Engineer Date 2-26-68

(This space for State Use)

APPROVED BY [Signature] TITLE [Signature] DATE [Signature]  
CONDITIONS OF APPROVAL, IF ANY:

NEW MEXICO OIL CONSERVATION COMMISSION  
WELL LOCATION AND ACREAGE DEDICATION PLAT

Form C-102  
Supersedes C-128  
Effective 1-1-65

All distances must be from the outer boundaries of the Section.

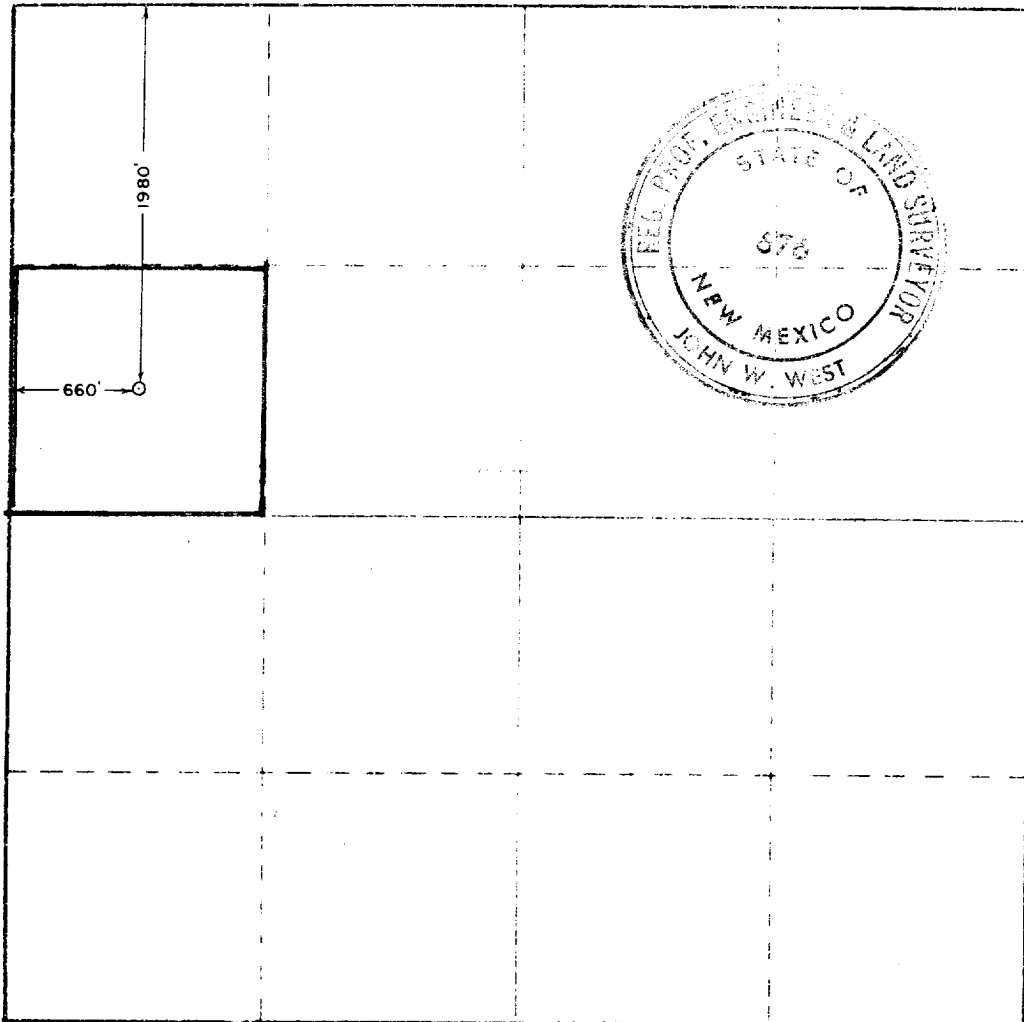
Operator <b>SUNRAY DX OIL COMPANY</b>		Lessee <b>J. G. CAPPS</b>		Well No. <b>1</b>
Tract Letter <b>E</b>	Section <b>8</b>	Township <b>3 SOUTH</b>	Range <b>35 EAST</b>	County <b>ROOSEVELT</b>
Actual Surface Location of Well: <b>1980</b> feet from the <b>NORTH</b> line and <b>660</b> feet from the <b>WEST</b> line.				
Ground Level Elev. <b>San Andres</b>	Producing Formation <b>Wildcat</b>		Designated Acreage <b>40</b>	

1. Outline the acreage dedicated to the subject well by colored pencil or hatchure marks on the plat below.
2. If more than one lease is dedicated to the well, outline each and identify the ownership thereof (both as to working interest and royalty).
3. If more than one lease of different ownership is dedicated to the well, have the interests of all owners been consolidated by communitization, unitization, force-pooling, etc?

☐ Yes ☐ No If answer is "yes," type of consolidation \_\_\_\_\_

If answer is "no," list the owners and tract descriptions which have actually been consolidated. (Use reverse side of this form if necessary.) \_\_\_\_\_

No allowable will be assigned to the well until all interests have been consolidated (by communitization, unitization, forced-pooling, or otherwise) or until a non-standard unit eliminating such interests has been approved by the Commission.



CERTIFICATION

I hereby certify that the information contained herein is true and complete to the best of my knowledge and belief.

*Ralph L. Maness*  
**Ralph L. Maness**  
**Acting District Engineer**

**Sunray DX Oil Company**

**February 26, 1968**

I hereby certify that the well location shown on this plat was plotted from field notes of actual surveys made by me or under my supervision, and that the same is true and correct to the best of my knowledge and belief.

**FEBRUARY 23, 1968**

Date Surveyed:

Registered Professional Engineer and/or Land Surveyor

*John W. West*  
Certificate No. **676**

0 330 660 990 1320 1650 1980 2310 2640 2970 3300 3630 3960 4290 4620 4950 5280 5610 5940 6270 6600

171

SUNRAY DX OIL CO.  
RECEIVED

FEB 26 1968

ROSWELL, N. M.