

NEW (ICO OIL CONSERVATION COMMISSION
WELL LOCATION AND ACREAGE DEDICATION PLAT

Form C-102
Supersedes C-128
Effective 1-1-65

All distances must be from the outer boundaries of the Section.

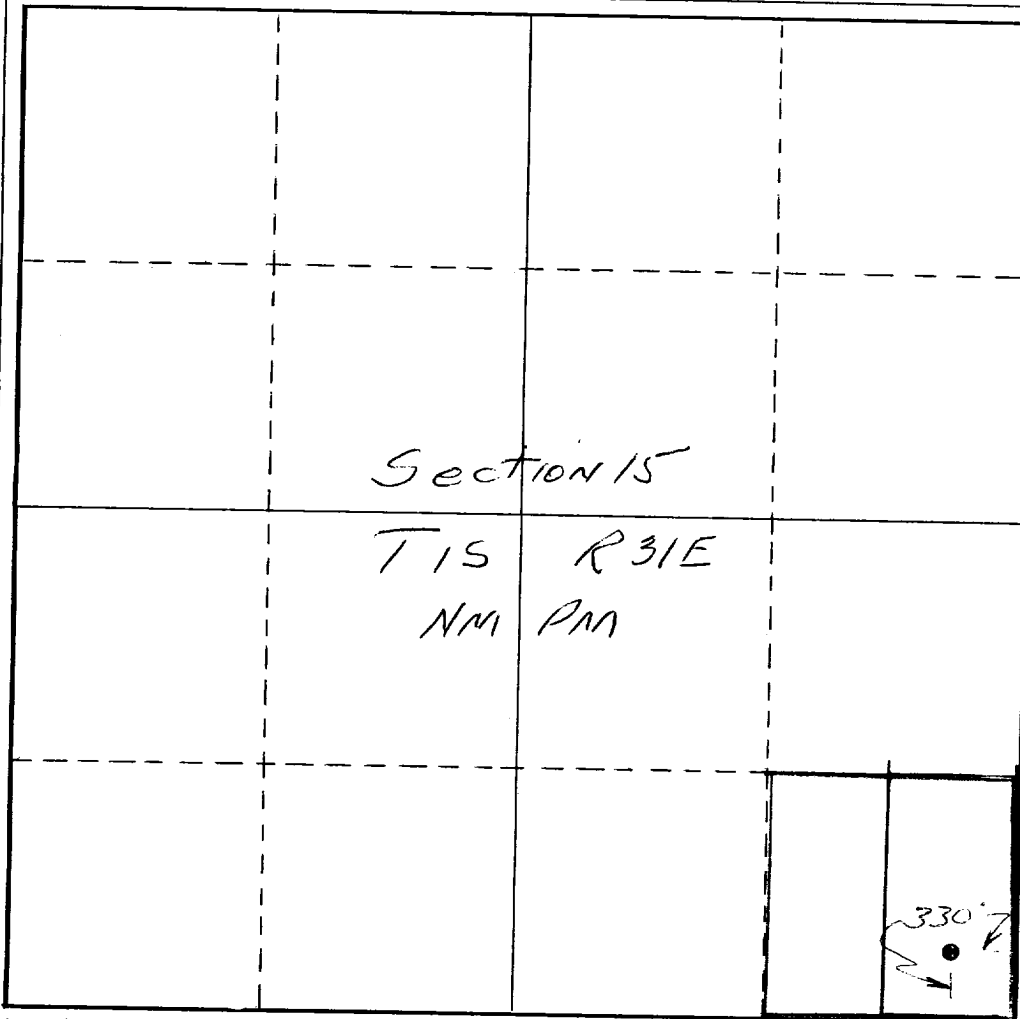
Operator M.R. KOGER			Lease C.S. GREATHOUSE			Well No. # 1		
Unit Letter WILDCAT	Section 15	Township 1 SOUTH	Range 31 EAST	County ROOSEVELT, NEW MEXICO				
Actual Footage Location of Well: 330' feet from the SOUTH line and 330 feet from the EAST line								
Ground Level Elev. 4272	Producing Formation GLORIETA		Pool WILDCAT			Dedicated Acreage: 820 Acres		

1. Outline the acreage dedicated to the subject well by colored pencil or hachure marks on the plat below.
2. If more than one lease is dedicated to the well, outline each and identify the ownership thereof (both as to working interest and royalty).
3. If more than one lease of different ownership is dedicated to the well, have the interests of all owners been consolidated by communitization, unitization, force-pooling, etc?

☐ Yes ☐ No If answer is "yes," type of consolidation **ONLY ONE LEASE**

If answer is "no," list the owners and tract descriptions which have actually been consolidated. (Use reverse side of this form if necessary.)

No allowable will be assigned to the well until all interests have been consolidated (by communitization, unitization, forced-pooling, or otherwise) or until a non-standard unit, eliminating such interests, has been approved by the Commission.



CERTIFICATION

I hereby certify that the information contained herein is true and complete to the best of my knowledge and belief.

Name
M.R. KOGER
Position
OWNER
Company
M.R. KOGER OIL Co.
Date
9-30-1968

I hereby certify that the well location shown on this plat was plotted from field notes of actual surveys made by me or under my supervision, and that the same is true and correct to the best of my knowledge and belief.

Date Surveyed
September 27, 1968
Registered Professional Engineer and/or Land Surveyor

Certificate No.

3255

0 330 660 990 1320 1650 1980 2310 2640 2000 1500 1000 500 0