

NEW MEXICO OIL CONSERVATION COMMISSION
WELL LOCATION AND ACREAGE DEDICATION PLAT

Form C-102
Supersedes C-128
Effective 1-1-65

All distances must be from the outer boundaries of the Section

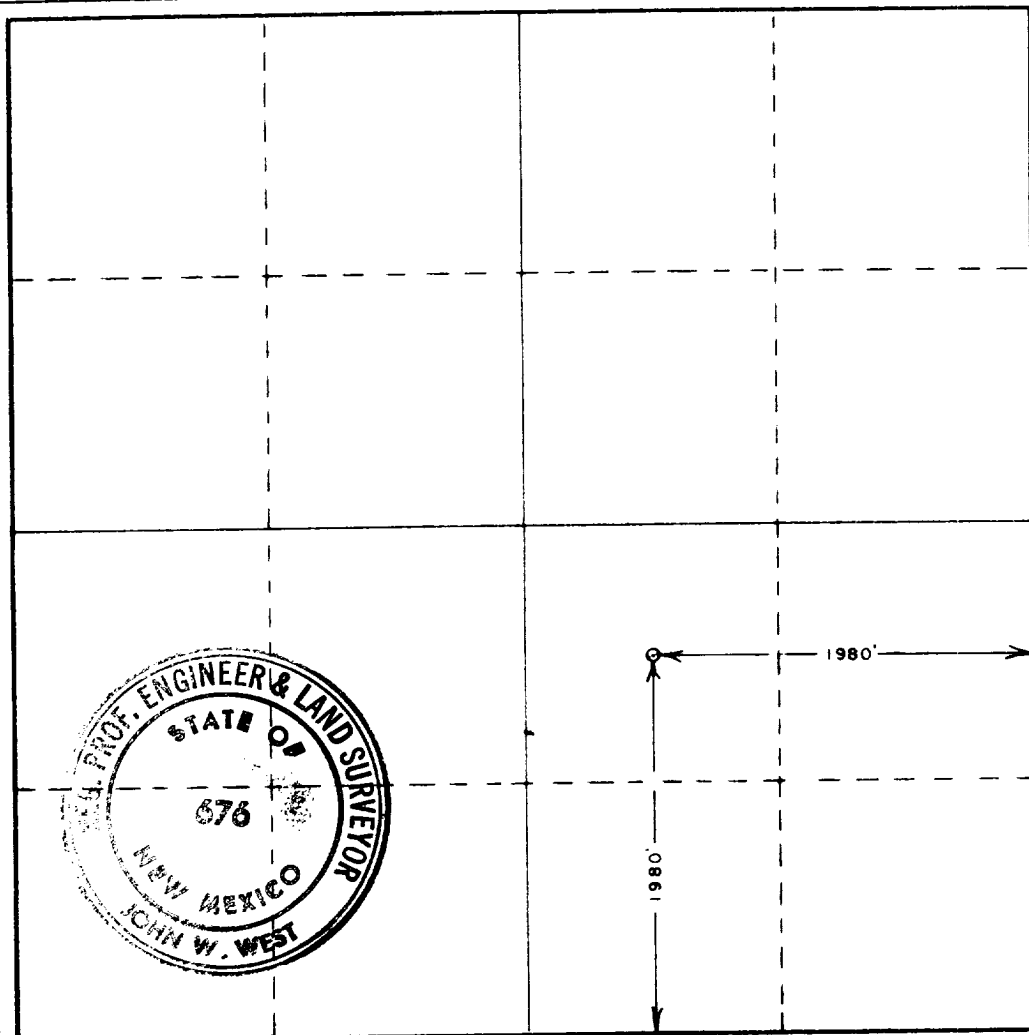
Operator Gas Producing Enterprises Co.			Lease Bessie Simpson		Well No. 1
Unit Letter J	Section 34	Township 6 South	Range 34 East	County Roosevelt	
Actual Footage Location of Well: 1980 feet from the South line and 1980 feet from the East line					
Ground Level Elev. 4311.0	Producing Formation		Pool	Dedicated Acreage: Acres	

1. Outline the acreage dedicated to the subject well by colored pencil or hachure marks on the plat below.
2. If more than one lease is dedicated to the well, outline each and identify the ownership thereof (both as to working interest and royalty).
3. If more than one lease of different ownership is dedicated to the well, have the interests of all owners been consolidated by communitization, unitization, force-pooling, etc?

☐ Yes ☐ No If answer is "yes," type of consolidation _____

If answer is "no," list the owners and tract descriptions which have actually been consolidated. (Use reverse side of this form if necessary.) _____

No allowable will be assigned to the well until all interests have been consolidated (by communitization, unitization, forced-pooling, or otherwise) or until a non-standard unit, eliminating such interests, has been approved by the Commission.



CERTIFICATION

I hereby certify that the information contained herein is true and complete to the best of my knowledge and belief.

Ray Woods
Name

Ray Woods

Position

District Engineer

Company

G.P.E., Inc.

Date

June 19, 1978

I hereby certify that the well location shown on this plat was plotted from field notes of actual surveys made by me or under my supervision, and that the same is true and correct to the best of my knowledge and belief.

Date Surveyed

June 15, 1978

Registered Professional Engineer
and/or Land Surveyor

John W. West
Certificate No. John W. West 676

Ronald J. Eidson 3239

0 330 660 990 1320 1650 1980 2310 2640 2000 1800 1000 500 0

RECEIVED

NOV 19 1958

U.S. DEPARTMENT OF AGRICULTURE
WASHINGTON, D.C.

172