

NO. OF COPIES RECEIVED	
DISTRIBUTION	
SANTA FE	
FILE	
U.S.G.S.	
LAND OFFICE	
OPERATOR	

NEW MEXICO OIL CONSERVATION COMMISSION

30-041-20526

Form C-101
Revised 11-65

5A. Indicate Type of Lease

STATE ☐ FEE ☒

5. State of New Mexico

APPLICATION FOR PERMIT TO DRILL, DEEPEN, OR PLUG BACK

1a. Type of Work		7. Field Name	
b. Type of Well DRILL <input checked="" type="checkbox"/> DEEPEN <input type="checkbox"/> PLUG BACK <input type="checkbox"/> GAS WELL <input type="checkbox"/> SINGLE ZONE <input checked="" type="checkbox"/> MULTIPLE ZONE <input type="checkbox"/>		8. Field Name	
c. Operator Coquina Oil Corporation		9. Well No. 1	
10. Address of Operator P. O. Drawer 2960 Midland, Texas 79702		11. Field and Well, if different Wildcat	
12. Location of Well UNIT LETTER C LOCATED 660 FEET FROM THE North LINE AND 1980 FEET FROM THE West LINE OF SEC. 10 TWP. 6S R1E. 32E N40W		13. County Roosevelt	
14. Proposed Depth 7800		15A. Formation Cisco	
15B. Drilling Contractor Not selected		16. Type of C.T. Rotary	
17. Elevations, show whether DT, RL, etc.) 4467.6 GR		18. Kind & Status Plug. Bond Blanket	
19. Approx. Date Work will start March 1, 1980			

PROPOSED CASING AND CEMENT PROGRAM

SIZE OF HOLE	SIZE OF CASING	WEIGHT PER FOOT	SETTING DEPTH	SACKS OF CEMENT	EST. TOP
17 1/2	13 3/8"	48#	400	430	surface
12 1/4	8 5/8"	24 & 32#	3100	475	2100
7 7/8	5 1/2"	14 & 15.5#	7800	200	6800

MI & RURT. Drill a 17 1/2" hole with fresh water spud mud to 400'. Set and cement surface casing. Cut off, install CH, NU BOP. After 18 hours WOC, pressure test BOP and casing to 1000 psi. Drill out in 12 1/4" hole with fresh water mud. Drill to 3100'. Set and cement intermediate string. Cut off, NU BOP. After 18 hours WOC, pressure test BOP and casing to 1000 psi. Drill out in 7 7/8" hole with cut brine water, mudding up as necessary to clean the hole and weighting as necessary to control BHP. Significant shows will be DST'd. At TD run electric logs and if production is indicated, run 5 1/2" casing, cementing to 500' above the top of any prospective pays, or at least to 6800'.

****Cement on the intermediate casing must be brought from the top of the salt or anhydrite. You can do this by either circulating the intermediate casing with cement, or a DV tool at the top of the salt.**

IN ABOVE SPACE DESCRIBE PROPOSED PROGRAM; IF PROPOSAL IS TO DEEPEN OR PLUG BACK, GIVE DATA ON PRESENT PRODUCTIVE ZONE AND PROPOSED NEW PRODUCTIVE ZONE. GIVE BLOWOUT PREVENTER PROGRAM, IF ANY.

I hereby certify that the information above is true and complete to the best of my knowledge and belief.

Signed Leland Hanz Title Drilling Manager Date 12/13/79

(This space for State Use)

APPROVED BY [Signature] TITLE SUPERVISOR DISTRICT I DATE DEC 21 1979

CONDITIONS OF APPROVAL, IF ANY:

****SEE ABOVE**

**NEW MEXICO OIL CONSERVATION COMMISSION
WELL LOCATION AND ACREAGE DEDICATION PLAT**

Form C-102
Supersedes C-128
Effective 1-1-65

All distances must be from the outer boundaries of the Section.

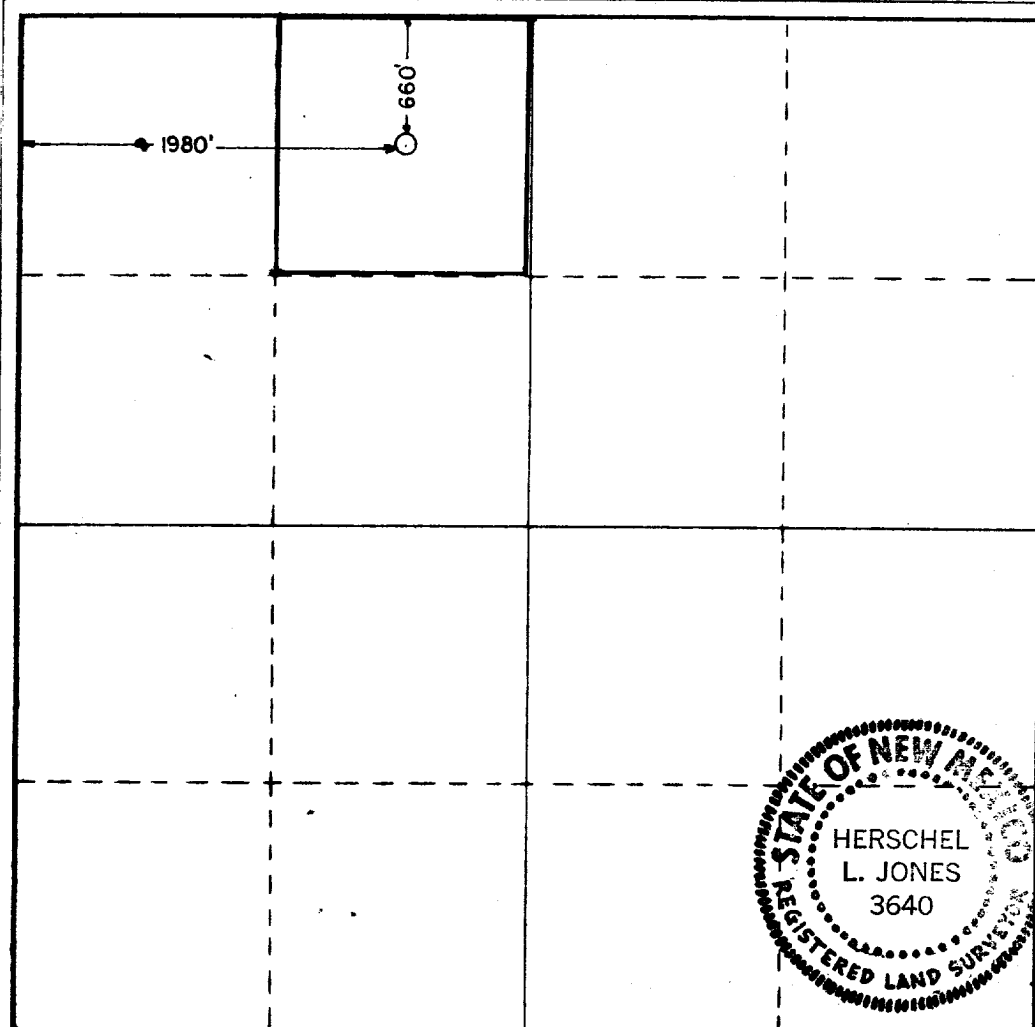
Operator COQUINA OIL CORPORATION			Lease Clemons		Well No. 1
Unit Letter 'C'	Section 10	Township 6 South	Range 32 East	County Roosevelt	
Actual Footage Location of Well: 660 feet from the North line and 1980 feet from the West line					
Ground Level Elev. 4467.6	Producing Formation Cisco		Pool Wildcat	Dedicated Acreage: 40 Acres	

1. Outline the acreage dedicated to the subject well by colored pencil or hachure marks on the plat below.
2. If more than one lease is dedicated to the well, outline each and identify the ownership thereof (both as to working interest and royalty).
3. If more than one lease of different ownership is dedicated to the well, have the interests of all owners been consolidated by communitization, unitization, force-pooling, etc?

☐ Yes ☐ No If answer is "yes," type of consolidation _____

If answer is "no," list the owners and tract descriptions which have actually been consolidated. (Use reverse side of this form if necessary.) _____

No allowable will be assigned to the well until all interests have been consolidated (by communitization, unitization, forced-pooling, or otherwise) or until a non-standard unit, eliminating such interests, has been approved by the Commission.



CERTIFICATION

I hereby certify that the information contained herein is true and complete to the best of my knowledge and belief.

Name *Leland J. Jones*
Position
Drilling Manager

Company
Coquina Oil Corporation

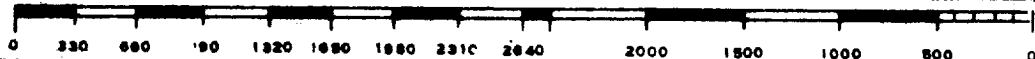
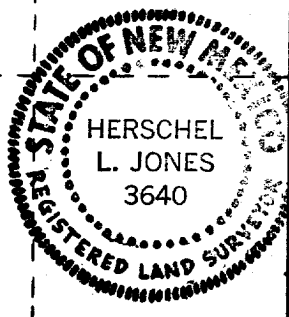
Date
December 13, 1979

I hereby certify that the well location shown on this plat was plotted from field notes of actual surveys made by me or under my supervision, and that the same is true and correct to the best of my knowledge and belief.

Date Surveyed
December 11, 1979

Registered Professional Engineer and/or Land Surveyor

Herschel L. Jones
Certificate No. **3640**



RECEIVED
DEC 14 1979
CONSERVATION DIV

RECEIVED
DEC 20 1979
CONSERVATION DIV
773