

UNITED STATES  
DEPARTMENT OF THE INTERIOR  
GEOLOGICAL SURVEY

30-041-20567

## APPLICATION FOR PERMIT TO DRILL, DEEPEN, OR PLUG BACK

## 1a. TYPE OF WORK

DRILL ☒DEEPEN ☐PLUG BACK ☐

## 5. LEASE DESIGNATION AND SERIAL NO.

NM-15019

## 6. IF INDIAN, ALLOTTEE OR TRIBE NAME

## 7. UNIT AGREEMENT NAME

## 8. FARM OR LEASE NAME

Cone Federal

## 9. WELL NO.

28

## 10. FIELD AND POOL, OR WILDCAT

Tomahawk, San Andres

11. SEC., T., R., M., OR BLK.  
AND SURVEY OR AREA

SW NW

Section 19, T.7S., R.32E.

## 12. COUNTY OR PARISH

Roosevelt

## 13. STATE

New Mexico

## b. TYPE OF WELL

OIL  
WELL ☒GAS  
WELL ☐

OTHER

SINGLE  
ZONE ☐MULTIPLE  
ZONE ☐

## 2. NAME OF OPERATOR

SUNDANCE OIL COMPANY

## 3. ADDRESS OF OPERATOR

Suite 910, 1776 Lincoln St., Denver, CO 80203

## 4. LOCATION OF WELL (Report location clearly and in accordance with any State requirements.)

At surface

1980' FNL and 610' FWL, Unit E

At proposed prod. zone

Same

## 14. DISTANCE IN MILES AND DIRECTION FROM NEAREST TOWN OR POST OFFICE\*

15 miles south of Kenna, New Mexico.

## 15. DISTANCE FROM PROPOSED\*

LOCATION TO NEAREST

PROPERTY OR LEASE LINE, FT.

(Also to nearest drlg. unit line, if any)

610

## 16. NO. OF ACRES IN LEASE

560

## 17. NO. OF ACRES ASSIGNED

TO THIS WELL

40

## 18. DISTANCE FROM PROPOSED LOCATION\*

TO NEAREST WELL, DRILLING COMPLETED,  
OR APPLIED FOR, ON THIS LEASE, FT.

1171

## 19. PROPOSED DEPTH

4350

## 20. ROTARY OR CABLE TOOLS

Rotary

## 21. ELEVATIONS (Show whether DF, RT, GR, etc.)

4392.4' GL

## 22. APPROX. DATE WORK WILL START\*

February 1, 1981

## 23.

## PROPOSED CASING AND CEMENTING PROGRAM

SIZE OF HOLE	SIZE OF CASING	WEIGHT PER FOOT	SETTING DEPTH	QUANTITY OF CEMENT
12 1/4"	8 5/8"	24	1800 CIRCULATE	500 sx Econ & 100 sx Class C
7 7/8"	4 1/2"	10.5	4350	300 sx 50/50 Poz

Well will be drilled to total depth and evaluated by running logs and DST's when necessary. Casing will be run when logs and DST's indicate possible commercial production.

IN ABOVE SPACE DESCRIBE PROPOSED PROGRAM: If proposal is to deepen or plug back, give data on present productive zone and proposed new productive zone. If proposal is to drill or deepen directionally, give pertinent data on subsurface locations and measured and true vertical depths. Give blowout preventer program, if any.

## 24.

SIGNED

  
Richard O. Dimit

TITLE Vice President, Production DATE Dec. 16, 1980

(This space for Federal or State office use)

PERMIT NO.

APPROVAL DATE

APPROVED BY (Orig. Sgd.) PETER W. CHESTER  
CONDITIONS OF APPROVAL, IF ANY:

TITLE ACTING DISTRICT ENGINEER

DATE DEC 31 1980

**NEW MEXICO OIL CONSERVATION COMMISSION  
WELL LOCATION AND ACREAGE DEDICATION PLAT**

Form C-102  
Supersedes C-128  
Effective 1-1-65

All distances must be from the outer boundaries of the Section

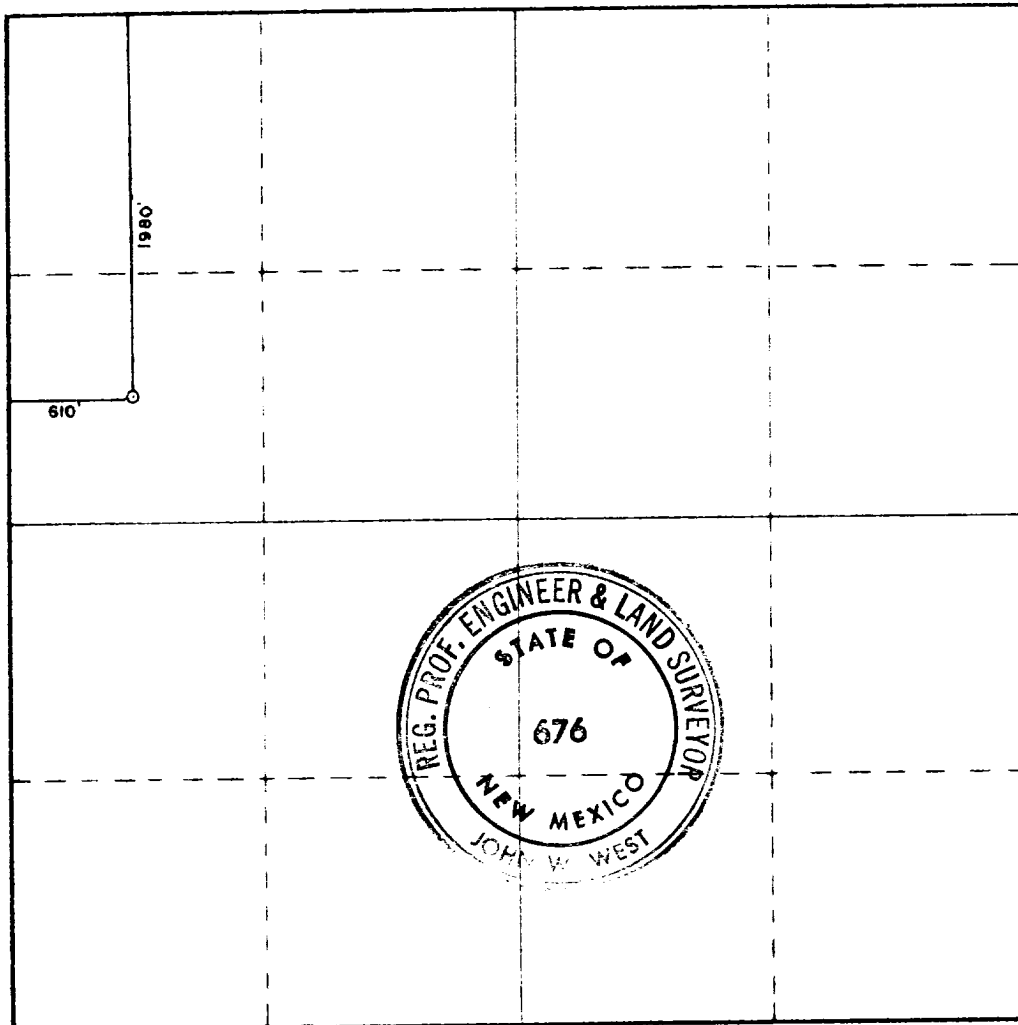
Operator <b>SUNDANCE OIL CO.</b>			Lease <b>Cone</b>		Well No. <b>28</b>
Unit Letter <b>E</b>	Section <b>19</b>	Township <b>7 South</b>	Range <b>32 East</b>	County <b>Roosevelt Co.</b>	
Actual Footage Location of Well: <b>1980</b> feet from the <b>North</b> line and <b>610</b> feet from the <b>West</b> line					
Ground Level Elev. <b>4392.4</b>	Producing Formation <b>San Andres</b>		Pool <b>Tomahawk</b>		Dedicated Acreage: <b>40</b> Acres

1. Outline the acreage dedicated to the subject well by colored pencil or hatchure marks on the plat below.
2. If more than one lease is dedicated to the well, outline each and identify the ownership thereof (both as to working interest and royalty).
3. If more than one lease of different ownership is dedicated to the well, have the interests of all owners been consolidated by communitization, unitization, force-pooling, etc?

☐ Yes    ☐ No    If answer is "yes," type of consolidation \_\_\_\_\_

If answer is "no," list the owners and tract descriptions which have actually been consolidated. (Use reverse side of this form if necessary.) \_\_\_\_\_

No allowable will be assigned to the well until all interests have been consolidated (by communitization, unitization, forced-pooling, or otherwise) or until a non-standard unit, eliminating such interests, has been approved by the Commission.



**CERTIFICATION**

I hereby certify that the information contained herein is true and complete to the best of my knowledge and belief.

*Richard O. Dimit*  
Name

Richard O. Dimit

Position

Vice President, Production

Company

Sundance Oil Company

Date

December 16, 1980

I hereby certify that the well location shown on this plat was plotted from field notes of actual surveys made by me or under my supervision, and that the same is true and correct to the best of my knowledge and belief.

Date Surveyed

11-22-80

Registered Professional Engineer and/or Land Surveyor

*John W. West*

Certificate No. **JOHN W. WEST 676**  
**PATRICK A. ROMERO 6663**  
**Ronald J. Edison 3239**

