

UNITED STATES
DEPARTMENT OF THE INTERIOR
GEOLOGICAL SURVEY

APPLICATION FOR PERMIT TO DRILL, DEEPEN, OR PLUG BACK

1a. TYPE OF WORK

DRILL ☒DEEPEN ☐PLUG BACK ☐

b. TYPE OF WELL

OIL
WELL ☒GAS
WELL ☐

OTHER

SINGLE
ZONE ☐MULTIPLE
ZONE ☐

2. NAME OF OPERATOR

SUNDANCE OIL COMPANY

3. ADDRESS OF OPERATOR

Suite 910, 1776 Lincoln St., Denver, CO 80203

4. LOCATION OF WELL (Report location clearly and in accordance with any State requirements.)*

At surface

660' FNL and 1781' FWL, Unit C

At proposed prod. zone

Same

14. DISTANCE IN MILES AND DIRECTION FROM NEAREST TOWN OR POST OFFICE*

15 miles south of Kenna, New Mexico

15. DISTANCE FROM PROPOSED*

LOCATION TO NEAREST
PROPERTY OR LEASE LINE, FT.
(Also to nearest drlg. unit line, if any)

660

16. NO. OF ACRES IN LEASE

560

17. NO. OF ACRES ASSIGNED
TO THIS WELL

40

18. DISTANCE FROM PROPOSED LOCATION*
TO NEAREST WELL, DRILLING, COMPLETED,
OR APPLIED FOR, ON THIS LEASE, FT.

1271

19. PROPOSED DEPTH

4350

20. ROTARY OR CABLE TOOLS

Rotary

21. ELEVATIONS (Show whether DF, RT, GR, etc.)

4407.5'

22. APPROX. DATE WORK WILL START*

February 28, 1981

23.

PROPOSED CASING AND CEMENTING PROGRAM

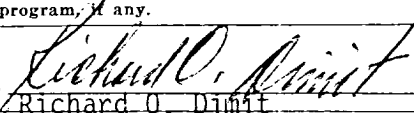
SIZE OF HOLE	SIZE OF CASING	WEIGHT PER FOOT	SETTING DEPTH	QUANTITY OF CEMENT
12 1/4"	8 5/8"	24	1800	300 sx Econ & 100 sx Class C
7 7/8"	4 1/2"	10.5	4350	300 sx 50/50 Poz

Well will be drilled to total depth and evaluated by running logs and DST's when necessary. Casing will be run when logs and DST's indicate possible commercial production.

IN ABOVE SPACE DESCRIBE PROPOSED PROGRAM: If proposal is to deepen or plug back, give data on present productive zone and proposed new productive zone. If proposal is to drill or deepen directionally, give pertinent data on subsurface locations and measured and true vertical depths. Give blowout preventer program, if any.

24.

SIGNED



TITLE Vice President, Production

DATE Dec. 16, 1980

(This space for Federal or State office use)

PERMIT NO.

APPROVAL DATE

APPROVED BY (Orig. Sgd.) PETER W. CHESTER

TITLE ACTING DISTRICT ENGINEER

DATE DEC 31 1980

CONDITIONS OF APPROVAL, IF ANY:

**MEXICO OIL CONSERVATION COMMISSION
WELL LOCATION AND ACREAGE DEDICATION PLAT**

Form C-102
Supersedes C-128
Effective 1-1-65

All distances must be from the outer boundaries of the Section

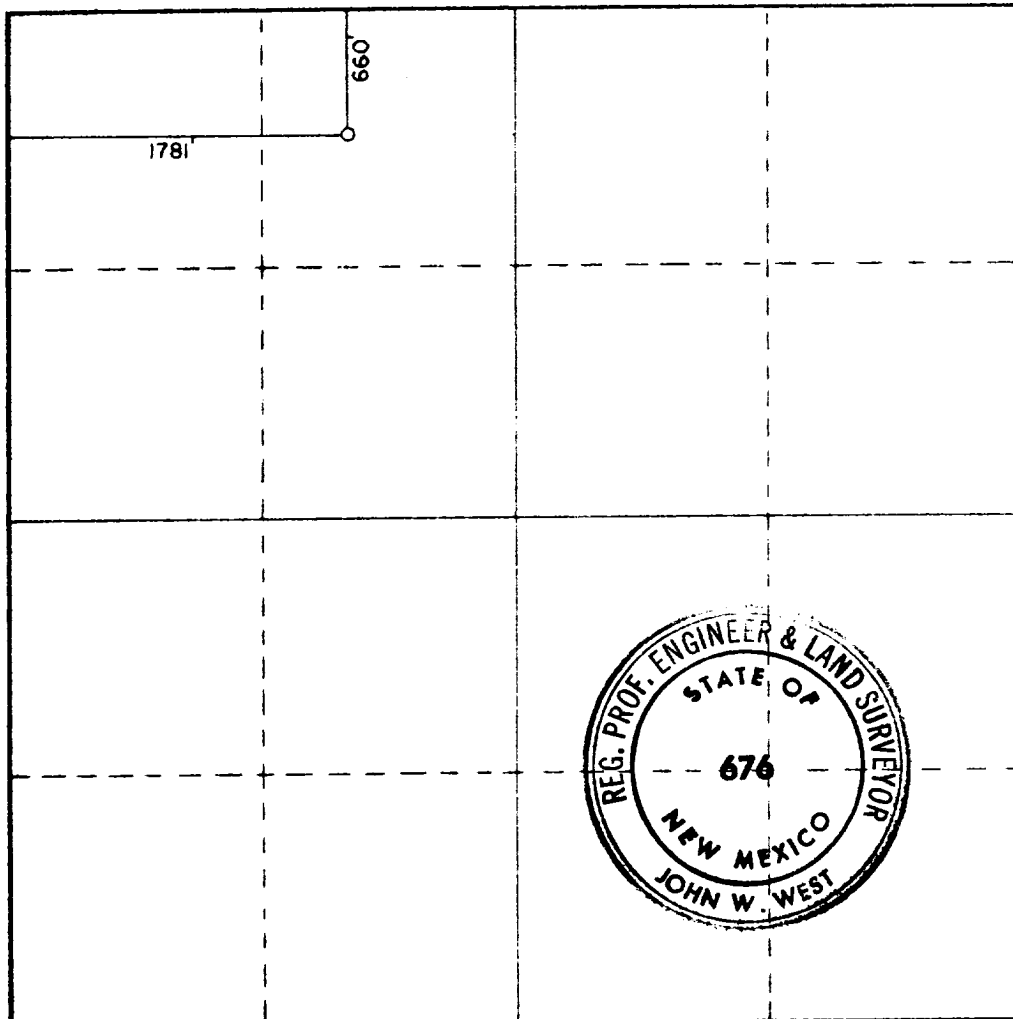
Operator Sundance Oil Co.			Lease Cone		Well No. 31
Unit Letter C	Section 19	Township 7 South	Range 32 East	County Roosevelt Co.	
Actual Footage Location of Well: 660 feet from the North line and 1781 feet from the West line					
Ground Level Elev. 4407.5	Producing Formation San Andres		Pool Tomahawk	Section of Acreage: 40 Acres	

1. Outline the acreage dedicated to the subject well by colored pencil or hatchure marks on the plat below.
2. If more than one lease is dedicated to the well, outline each and identify the ownership thereof (both as to working interest and royalty).
3. If more than one lease of different ownership is dedicated to the well, have the interests of all owners been consolidated by communitization, unitization, force-pooling, etc?

☐ Yes ☐ No If answer is "yes," type of consolidation _____

If answer is "no," list the owners and tract descriptions which have actually been consolidated (Use reverse side of this form if necessary.) _____

No allowable will be assigned to the well until all interests have been consolidated (by communitization, unitization, forced-pooling, or otherwise) or until a non-standard unit, eliminating such interests, has been approved by the Commission.



CERTIFICATION

I hereby certify that the information contained herein is true and complete to the best of my knowledge and belief.

Richard O. Dimit
Name
Richard O. Dimit
Position
Vice President, Production
Company
Sundance Oil Company
Date
December 16, 1980

I hereby certify that the well location shown on this plat was plotted from field notes of actual surveys made by me or under my supervision, and that the same is true and correct to the best of my knowledge and belief.

Date Surveyed
12-3-80
Registered Professional Engineer and or Land Surveyor
John W. West
Certificate No. **JOHN W. WEST 676**
PATRICK A. ROMERO 6668
Ronald J. Eldson 3239

