

**NEW MEXICO OIL CONSERVATION COMMISSION
WELL LOCATION AND ACREAGE DEDICATION PLAT**

Form C-102
Supersedes C-128
Effective 1-1-65

All distances must be from the outer boundaries of the Section.

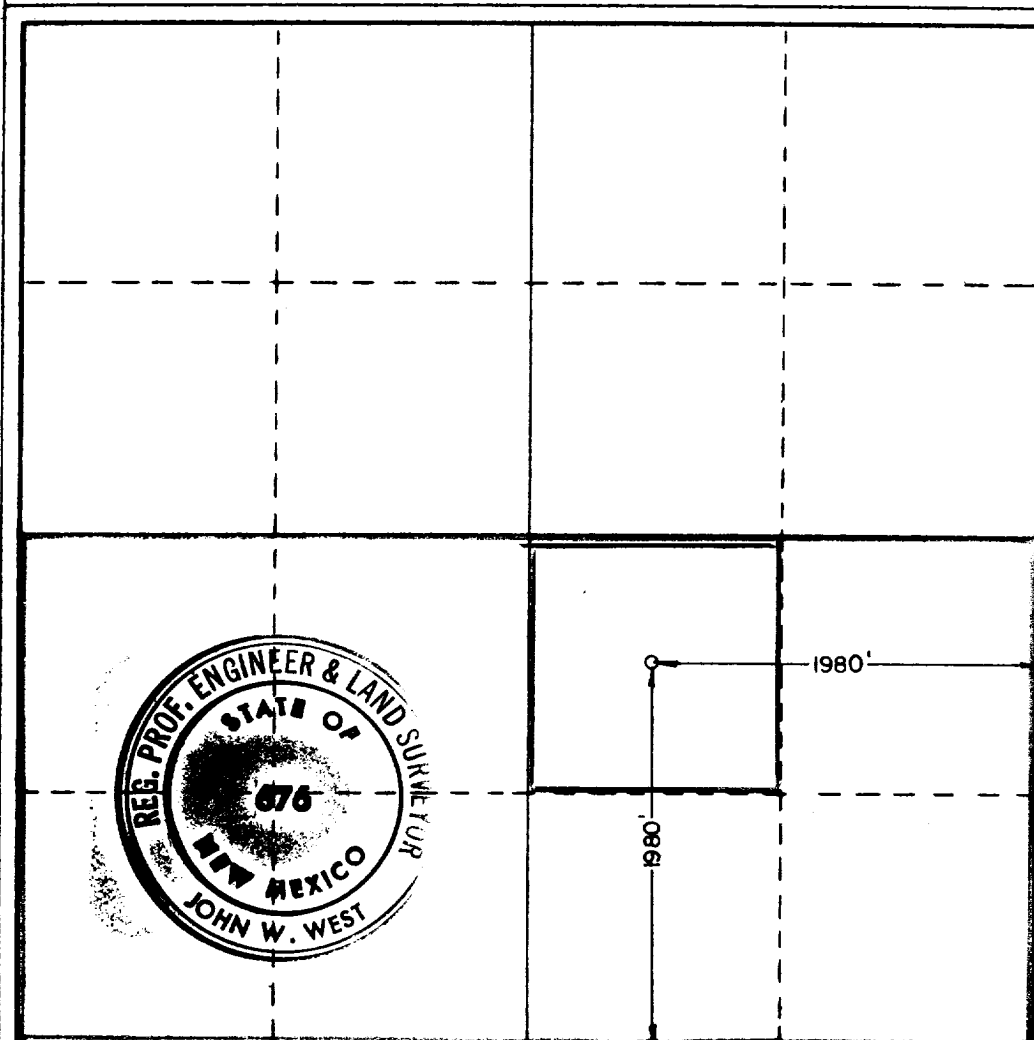
Operator Energy Reserves Group, Inc.,			Lease Miller "A"		Well No. 1
Unit Letter I	Section 11	Township 6 South	Range 33 East	County Roosevelt	
Actual Footage Location of Well: <div style="display: flex; justify-content: space-between;"> 1980 feet from the south line and 1980 feet from the east line </div>					
Ground Level Elev. 4388.6	Producing Formation Cisco	Pool UNDESIGNATED		Dedicated Acreage: 320 40 Acres	

1. Outline the acreage dedicated to the subject well by colored pencil or hachure marks on the plat below.
2. If more than one lease is dedicated to the well, outline each and identify the ownership thereof (both as to working interest and royalty).
3. If more than one lease of different ownership is dedicated to the well, have the interests of all owners been consolidated by communitization, unitization, force-pooling, etc?

☐ Yes ☐ No If answer is "yes," type of consolidation _____

If answer is "no," list the owners and tract descriptions which have actually been consolidated. (Use reverse side of this form if necessary.) _____

No allowable will be assigned to the well until all interests have been consolidated (by communitization, unitization, forced-pooling, or otherwise) or until a non-standard unit, eliminating such interests, has been approved by the Commission.



CERTIFICATION

I hereby certify that the information contained herein is true and complete to the best of my knowledge and belief.

R. L. Robertson

Name
R. L. Robertson
Position
Production Engineer II
Company
Energy Reserves Group, Inc.

Date
April 29, 1981

I hereby certify that the well location shown on this plat was plotted from field notes of actual surveys made by me or under my supervision, and that the same is true and correct to the best of my knowledge and belief.

Date Surveyed
4-25-81

Registered Professional Engineer and/or Land Surveyor

John W. West

Certificate No. **JOHN W. WEST 676**
PATRICK A. ROMERO 6888
Ronald J. Eidson 3239

0 320 640 960 1280 1600 1920 2240 2560 2880 3200 3520 3840 4160 4480 4800 5120 5440 5760 6080 6400

173

RECEIVED

APR 30 1981

OIL CONSERVATION DIV.