

30-041-20621

NO. OF COPIES RECEIVED

DISTRIBUTION

SANTA FE

FILE

U.S.G.S.

LAND OFFICE

OPERATOR

NEW MEXICO OIL CONSERVATION COMMISSION

Form C-101
Revised 1-1-65

5A. Indicate Type of Lease

STATE ☐FEE ☒

5. State Oil & Gas Lease No.

APPLICATION FOR PERMIT TO DRILL, DEEPEN, OR PLUG BACK

1a. Type of Work

DRILL ☒DEEPEN ☐PLUG BACK ☐

b. Type of Well

OIL WELL ☒GAS WELL ☐

OTHER

SINGLE ZONE ☒MULTIPLE ZONE ☐

2. Name of Operator

NRM Petroleum Corporation

3. Address of Operator

900 Building of the Southwest / Midland, Texas 79701

4. Location of Well

UNIT LETTER E

LOCATED 1980

FEET FROM THE West

LINE

AND 1980

FEET FROM THE

North

LINE OF SEC. 18

TWP. 7S

RGE. 32E

NMPM

7. Unit Agreement Name

8. Farm or Lease Name

Southard

9. Well No.

1

10. Field and Pool, or Wildcat

INDICATE

12. County

Roosevelt

19. Proposed Depth

4400

19A. Formation

San Andres

20. Rotary or C.T.

Rotary

21. Elevations (Show whether DF, RT, etc.)

4423.4 GL

21A. Kind & Status Plug. Bond

Blanket on File

21B. Drilling Contractor

Vision Drilling

22. Approx. Date Work will start

Oct. 20, 1981

PROPOSED CASING AND CEMENT PROGRAM

SIZE OF HOLE	SIZE OF CASING	WEIGHT PER FOOT	SETTING DEPTH	SACKS OF CEMENT	EST. TOP
12 1/4"	8 5/8"	24#	400'	250 Class "C"	surface
7 7/8"	4 1/2"	10.50#	4400'	1100 sx	surface

Drill 12 1/4" hole to 400'. Set 8 5/8", 24#, surface casing. Circ cmt to surface.
 Drill 7 7/8" hole to top of San Andres porosity, approx 4165'. Core San Andres.
 If commercial production is indicated, run 4 1/2" casing & cmt to surface.

Vision Drilling Rig #2 - BOP's 8 5/8" 2000# Ragan Hydromatic

APPROVAL VALID FOR 180 DAYS
 PERMIT EXPIRES 4/8/82
 UNLESS DRILLING UNDERWAY

IN ABOVE SPACE DESCRIBE PROPOSED PROGRAM: IF PROPOSAL IS TO DEEPEN OR PLUG BACK, GIVE DATA ON PRESENT PRODUCTIVE ZONE AND PROPOSED NEW PRODUCTIVE ZONE. GIVE BLOWOUT PREVENTER PROGRAM, IF ANY.

I hereby certify that the information above is true and complete to the best of my knowledge and belief.

Signed Cecil Tucker Title Operations Manager Date Sept. 30, 1981

(This space for State Use)

Orig. Signed by

Jerry Sexton

APPROVED BY

D. J. Suggs

TITLE

DATE

CONDITIONS OF APPROVAL

OCT 6 1981

**NEW MEXICO OIL CONSERVATION COMMISSION
WE. LOCATION AND ACREAGE DEDICATION PLAT**

Form C-102
Supersedes C-128
Effective 1-1-65

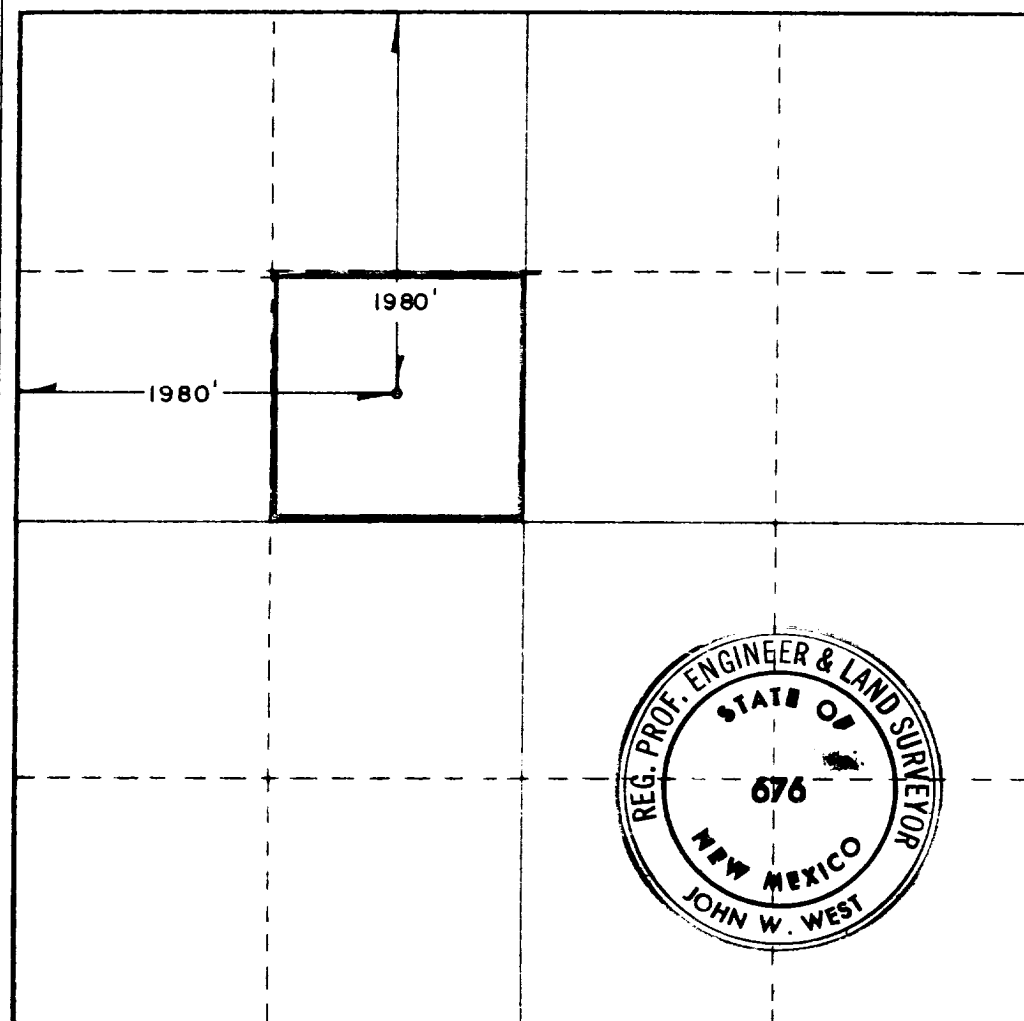
All distances must be from the outer boundaries of the Section

Operator N.R.M. Petroleum Corp.			Lease Southard		Well No. 1
Unit Letter F	Section 18	Township 7 South	Range 32 East	County Roosevelt	
Actual Footage Location of Well: 1980 feet from the North line and 1980 feet from the West line					
Ground Level Elev. 4423.4	Producing Formation San Andres		Pool Wildcat	Dedicated Acreage: 40 Acres	

1. Outline the acreage dedicated to the subject well by colored pencil or hatchure marks on the plat below.
 2. If more than one lease is dedicated to the well, outline each and identify the ownership thereof (both as to working interest and royalty). **NA**
 3. If more than one lease of different ownership is dedicated to the well, have the interests of all owners been consolidated by communitization, unitization, force-pooling, etc? **NA**
- ☐ Yes ☐ No If answer is "yes," type of consolidation _____

If answer is "no," list the owners and tract descriptions which have actually been consolidated. (Use reverse side of this form if necessary.) _____

No allowable will be assigned to the well until all interests have been consolidated (by communitization, unitization, forced-pooling, or otherwise) or until a non-standard unit, eliminating such interests, has been approved by the Commission.



CERTIFICATION

I hereby certify that the information contained herein is true and complete to the best of my knowledge and belief.

Cecil Tucker

Name **Cecil Tucker**
Position **Operations Manager**

NRM Petroleum Corporation
Company

9-30-81
Date

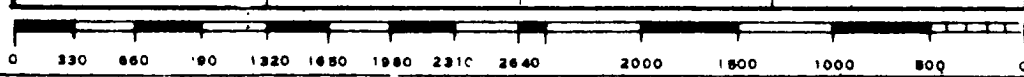
I hereby certify that the well location shown on this plat was plotted from field notes of actual surveys made by me or under my supervision, and that the same is true and correct to the best of my knowledge and belief.

Date Surveyed **9/25/81**

Registered Professional Engineer and/or Land Surveyor

John W. West

Certificate No. **JOHN W. WEST 676**
PATRICK A. ROMERO 6663
Ronald J. Eidson 3239



RECEIVED

OCT 5 1981

FIL CONSERVATION DIV