

**NEW MEXICO OIL CONSERVATION COMMISSION
WELL LOCATION AND ACREAGE DEDICATION PLAT**

Form C-102
Supersedes C-1,
Effective 1-1-65

All distances must be from the outer boundaries of the Section

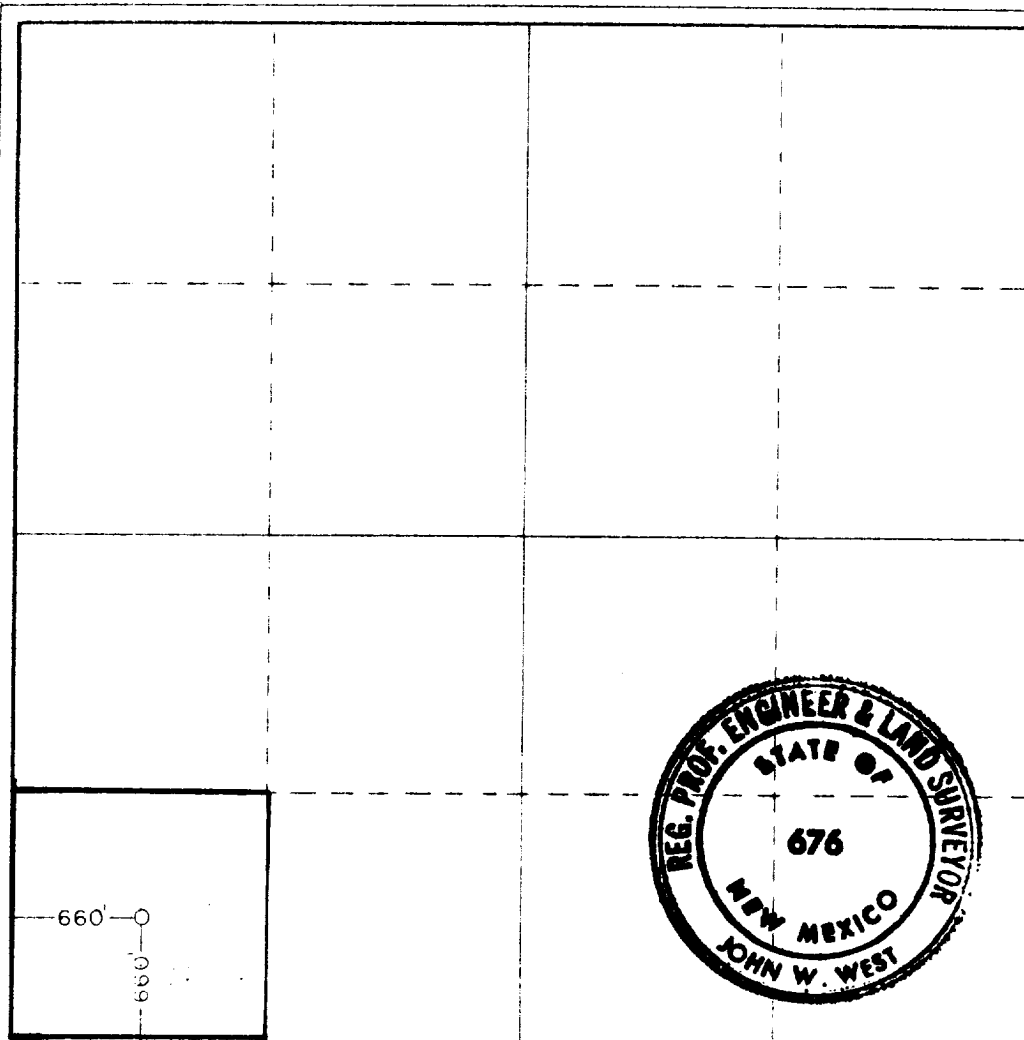
Operator Ike Lovelady Inc.			Lease P. D Craig			Well No. 1		
Quarter Section M	Section 11	Township 4 South	Range 33 East	County Roosevelt				
Actual true location of Well: 660 feet from the South line and 660 feet from the West line								
Section Level Elev. 4321.2'	Producing Formation Montoya		Pool Wildcat			Dedicated Acreage 40		

1. Outline the acreage dedicated to the subject well by colored pencil or hachure marks on the plat below.
2. If more than one lease is dedicated to the well, outline each and identify the ownership thereof (both as to working interest and royalty).
3. If more than one lease of different ownership is dedicated to the well, have the interests of all owners been consolidated by communitization, unitization, force-pooling, etc?

☐ Yes ☒ No If answer is "yes," type of consolidation _____

If answer is "no," list the owners and tract descriptions which have actually been consolidated. (Use reverse side of this form if necessary.) _____

No allowable will be assigned to the well until all interests have been consolidated (by communitization, unitization, forced-pooling, or otherwise) or until a non-standard unit, eliminating such interests, has been approved by the Commission.



CERTIFICATION

I hereby certify that the information contained herein is true and complete to the best of my knowledge and belief.

Paul J. Sims

Name
Paul J. Sims
Position
Vice President
Company
Ike Lovelady, Inc.

Date
November 25, 1981

I hereby certify that the well location shown on this plat was plotted from field notes of actual surveys made by me or under my supervision, and that the same is true and correct to the best of my knowledge and belief.

Date Surveyed
Nov. 21, 1981

Registered Professional Engineer and Land Surveyor

John W. West

Certificate No. **JOHN W. WEST 676**
PATRICK A. ROMERO 6863
Ronald J. Eideen 3230



171

RECEIVED

NOV 30 1981

CONSERVATION DIV