

NO. OF COPIES RECEIVED	
DISTRIBUTION	
SANTA FE	
FILE	
U.S.G.S.	
LAND OFFICE	
OPERATOR	

5A. Indicate Type of Lease STATE <input type="checkbox"/> FEE <input checked="" type="checkbox"/>
5. State Oil & Gas Lease No.
7. Unit Agreement Name
8. Farm or Lease Name Wilcox "TS"
9. Well No. 1
10. Field and Pool, or Wildcat Undes. San Andres <i>Tomahawk</i>
12. County Roosevelt

APPLICATION FOR PERMIT TO DRILL, DEEPEN, OR PLUG BACK

1. Type of Work  
DRILL ☒ DEEPEN ☐ PLUG BACK ☐

2. Type of Well  
OIL WELL ☒ GAS WELL ☐ OTHER ☐ SINGLE ZONE ☐ MULTIPLE ZONE ☐

Name of Operator  
Yates Petroleum Corporation

Address of Operator  
207 S. 4th, Artesia, New Mexico 88210

Location of Well  
UNIT LETTER A LOCATED 330 FEET FROM THE North LINE  
330 FEET FROM THE East LINE OF SEC. 19 TWP. 7S RGE. 32E NMPM

19. Proposed Depth 4250'	19A. Formation San Andres	20. Rotary or C.T. Rotary
21A. Kind & Status Plug. Bond Blanket	21B. Drilling Contractor Horizon	22. Approx. Date Work will start ASAP

2. Elevations (show whether DF, HT, etc.)  
4466.6 GL

PROPOSED CASING AND CEMENT PROGRAM

SIZE OF HOLE	SIZE OF CASING	WEIGHT PER FOOT	SETTING DEPTH	SACKS OF CEMENT	EST. TOP
12 1/2"	8 5/8"	24#	Appr. 1700'	500 sx	circulated
7 7/8"	4 1/2"	9.5#	TD	300 sx	

We propose to drill and test the San Andres and intermediate formations. Approximately 1700' of surface casing will be set and cement circulated to shut off gravel and caving. If commercial, production casing will be run and cemented with adequate cover, perforated and stimulated as needed for production.

MUD PROGRAM: Native mud to 1700', Fresh water to TD.

BOP PROGRAM: BOP's will be installed at 1700' and tested daily.

APPROVAL VALID FOR 180 DAYS  
PERMIT EXPIRES 10/7/82  
UNLESS DRILLING UNDERWAY

ABOVE SPACE DESCRIBE PROPOSED PROGRAM: IF PROPOSAL IS TO DEEPEN OR PLUG BACK, GIVE DATA ON PRESENT PRODUCTIVE ZONE AND PROPOSED NEW PRODUCTION ZONE. GIVE BLOWOUT PREVENTER PROGRAM, IF ANY.

I hereby certify that the information above is true and complete to the best of my knowledge and belief.

Signed Blasario Rodriguez Title Regulatory Manager Date 4/5/82

by: Rebecca L. Whitbourn  
Orig. Signed by Les Clements  
PROVED BY Les Clements TITLE Oil & Gas Insp. DATE 4/5/82

CONDITIONS OF APPROVAL: Oil & Gas Insp.

NEW MEXICO OIL CONSERVATION COMMISSION  
WELL LOCATION AND ACREAGE DEDICATION PLAT

Form C-102  
Supersedes C-128  
Effective 1-1-65

All distances must be from the outer boundaries of the Section.

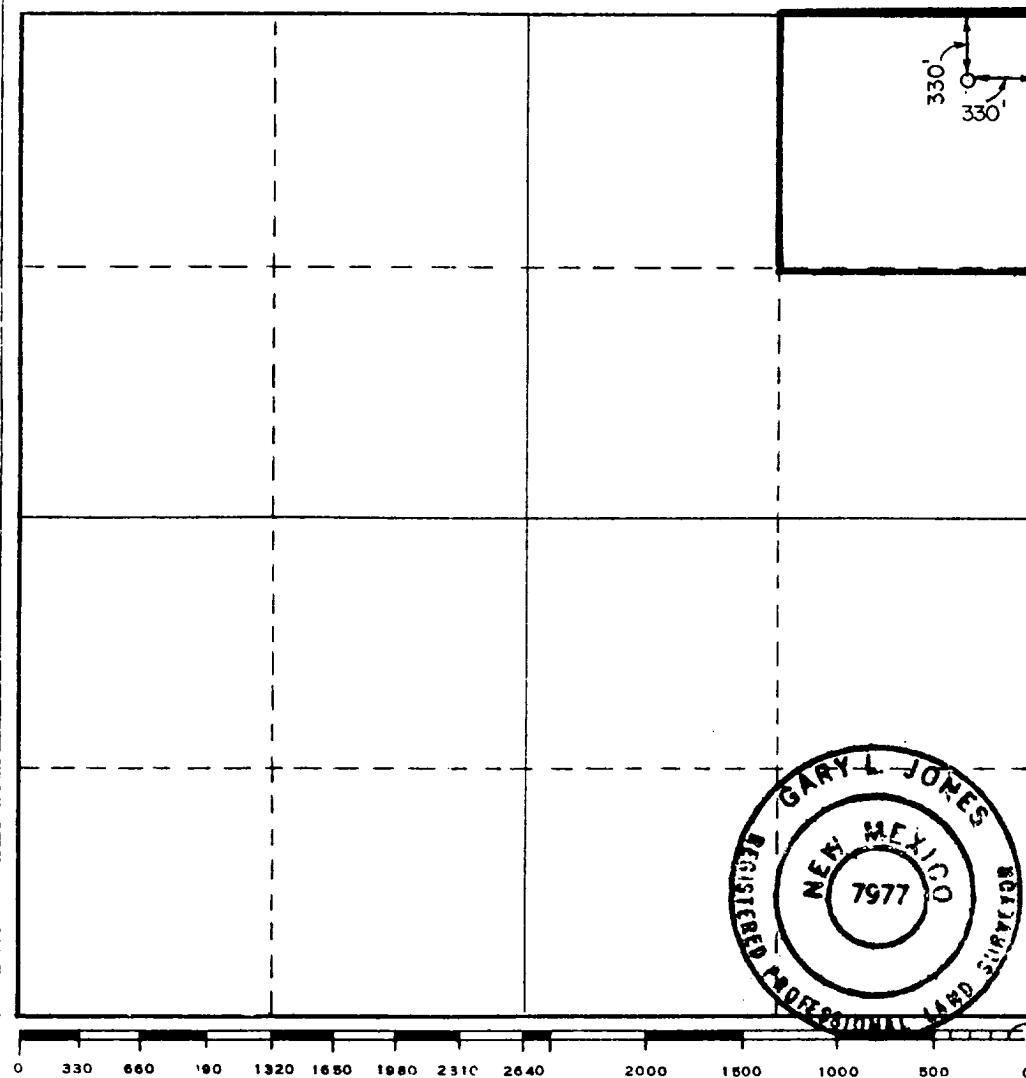
Operator <b>YATES PETROLEUM CORPORATION</b>			Lease <b>Wilcox "TS"</b>		Well No. <b>1</b>
Unit Letter <b>A</b>	Section <b>19</b>	Township <b>7 South</b>	Range <b>32 East</b>	County <b>Chaves</b>	
Actual Footage Location of Well: <b>330</b> feet from the <b>North</b> line and <b>330</b> feet from the <b>East</b> line					
Ground Level Elev. <b>4466.6'</b>	Producing Formation <b>SAN ANDRES</b>		Pool <b>Undes. San Andres</b>	Dedicated Acreage: <b>40</b> Acres	

1. Outline the acreage dedicated to the subject well by colored pencil or hatchure marks on the plat below.
2. If more than one lease is dedicated to the well, outline each and identify the ownership thereof (both as to working interest and royalty).
3. If more than one lease of different ownership is dedicated to the well, have the interests of all owners been consolidated by communitization, unitization, force-pooling, etc?

☐ Yes    ☐ No    If answer is "yes," type of consolidation \_\_\_\_\_

If answer is "no," list the owners and tract descriptions which have actually been consolidated. (Use reverse side of this form if necessary.) \_\_\_\_\_

No allowable will be assigned to the well until all interests have been consolidated (by communitization, unitization, forced-pooling, or otherwise) or until a non-standard unit, eliminating such interests, has been approved by the Commission.



**CERTIFICATION**

I hereby certify that the information contained herein is true and complete to the best of my knowledge and belief.

*Gliserio Rodriguez*

Name

**GLISERIO RODRIGUEZ**

Position

**REG. MGR.**

Company

**YATES PETROLEUM CORP.**

Date

**4-5-82**

I hereby certify that the well location shown on this plat was plotted from field notes of actual surveys made by me or under my supervision, and that the same is true and correct to the best of my knowledge and belief.

Date Surveyed

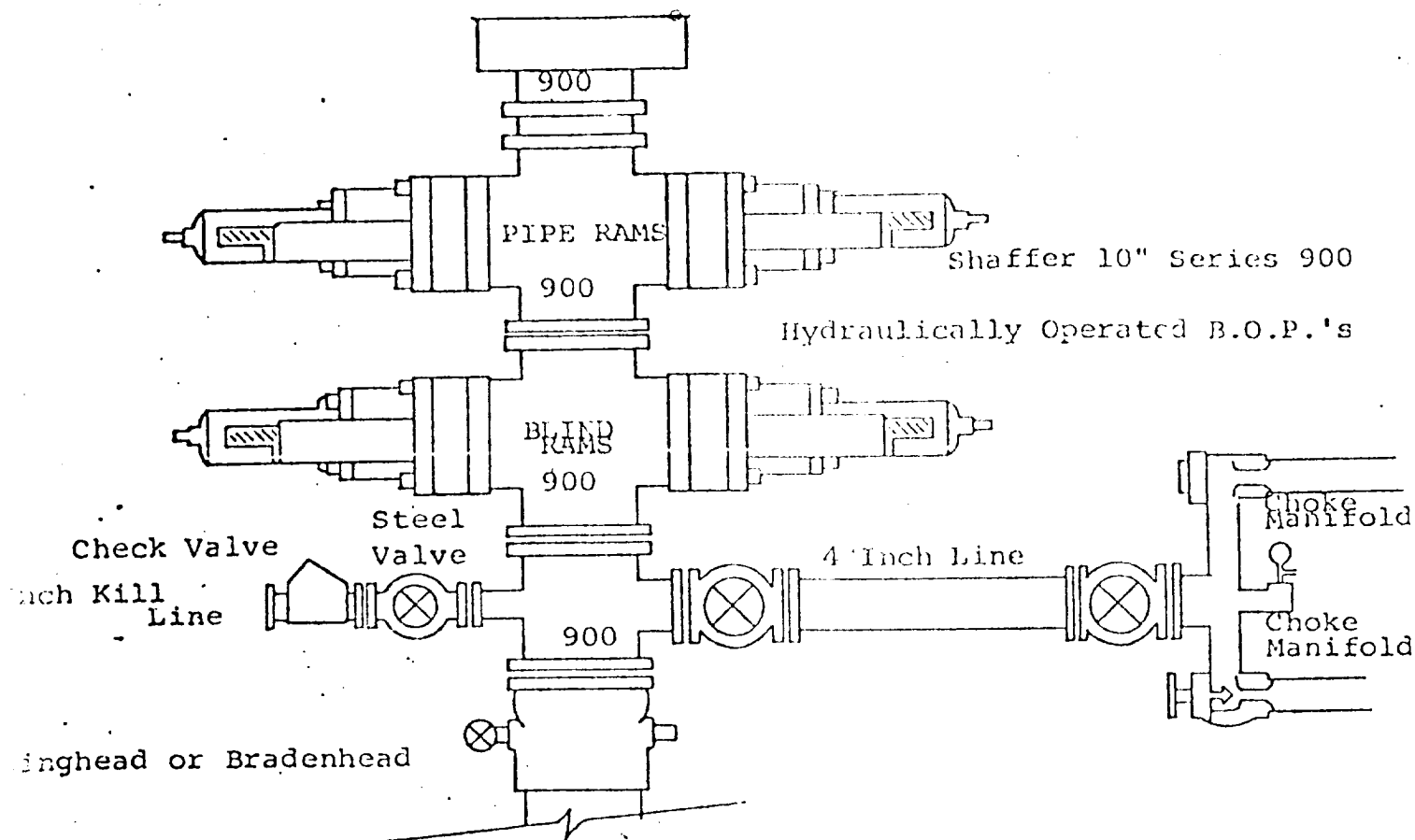
**March 26, 1982**

Registered Professional Engineer and/or Land Surveyor

*Sam R. Jones*

Certificate No.

**7977**



#### FOLLOWING CONSTITUTE MINIMUM BLOWOUT PREVENTER REQUIREMENTS

- All preventers to be hydraulically operated with secondary manual controls installed prior to drilling out from under casing.
- Choke outlet to be a minimum of 4" diameter.
- Kill line to be of all steel construction of 2" minimum diameter.
- All connections from operating manifolds to preventers to be all steel.
- hole or tube a minimum of one inch in diameter.
- The available closing pressure shall be at least 15% in excess of that required with sufficient volume to operate the B.O.P.'s.
- All connections to and from preventer to have a pressure rating equivalent to that of the B.O.P.'s.
- Inside blowout preventer to be available on rig floor.
- Operating controls located a safe distance from the rig floor.
- Hole must be kept filled on trips below intermediate casing. Operator not responsible for blowouts resulting from not keeping hole full.
- D. P. float must be installed and used below zone of first gas intrusion.