

NO. OF COPIES RECEIVED	
DISTRIBUTION	
SANTA FE	
FILE	
U.S.G.S.	
LAND OFFICE	
OPERATOR	

5A. Indicate Type of Lease  
STATE ☒ REC ☐

5. State Oil & Gas Lease No.

7. Unit Agreement Name  
NA

8. Farm or Lease Name  
Roosevelt State 9st

9. Well No.  
1

10. Field and Pool, or Wildcat  
Wildcat

12. County  
Roosevelt

APPLICATION FOR PERMIT TO DRILL, DEEPEN, OR PLUG BACK

a. Type of Work  
DRILL ☒ DEEPEN ☐ PLUG BACK ☐

b. Type of Well  
OIL WELL ☒ GAS WELL ☐ OTHER ☐

SINGLE ZONE ☐ MULTIPLE ZONE ☒

Name of Operator  
OGR Operating Co., Inc.

Address of Operator  
1140 2 First City Center, Midland, Texas 79701

Location of Well  
UNIT LETTER L LOCATED 1980 FEET FROM THE South LINE  
AND 990 FEET FROM THE West LINE OF SEC. 9 TWP. 6 S REC. 34E NMPM

19. Proposed Depth  
8400'

19A. Formation  
Fusselman

20. Rotary or C.T.  
Rotary

21. Elevations (Show whether DF, KT, etc.)  
4361.4 gl

21A. Kind & Status Plug. Bond  
Blanket

21B. Drilling Contractor  
Parker

22. Approx. Date Work will start  
11-15-83

23. PROPOSED CASING AND CEMENT PROGRAM

SIZE OF HOLE	SIZE OF CASING	WEIGHT PER FOOT	SETTING DEPTH	SACKS OF CEMENT	EST. TOP
12-1/4"	8-5/8"	24#	1950'	930	surface
7-7/8"	5-1/2"	15.5 & 17#	8400'	300	7000

1. Drill 12-1/4" hole to 1950' with native mud.
2. Run 8-5/8" csg to 1950' & circulate cement with 730 sx of Pacesetter Lite & 200 sx Class C neat.
3. Install 10" 3000 psi double hydraulic BOP's & choke manifold. Test casing & BOP's to 1000 psi for 30 min.
4. Drill to approx 8400 & test Cisco and Fusselman formations.

APPROVAL VALID FOR 180 DAYS  
PERMIT EXPIRES 5/10/84  
UNLESS DRILLING UNDERWAY

IN ABOVE SPACE DESCRIBE PROPOSED PROGRAM: IF PROPOSAL IS TO DEEPEN OR PLUG BACK, GIVE DATA ON PRESENT PRODUCTIVE ZONE AND PROPOSED NEW PRODUCTIVE ZONE. GIVE BLOWOUT PREVENTER PROGRAM, IF ANY.

I hereby certify that the information above is true and complete to the best of my knowledge and belief.

Signed Mickey Nelson Title Agent for OGR Operating Co. Date 10-26-83  
(This space for State Use)

APPROVED BY ORIGINAL SIGNED BY JERRY SEXTON TITLE DISTRICT SUPERVISOR DATE NOV 10 1983  
CONDITIONS OF APPROVAL, IF ANY:

RECEIVED

OCT 27 1983

O.C.D.  
HOBBS OFFICE

NEW MEXICO OIL CONSERVATION COMMISSION  
WELL LOCATION AND ACREAGE DEDICATION PLAT

Form C-102  
Supersedes C-128  
Effective 1-1-65

All distances must be from the outer boundaries of the Section.

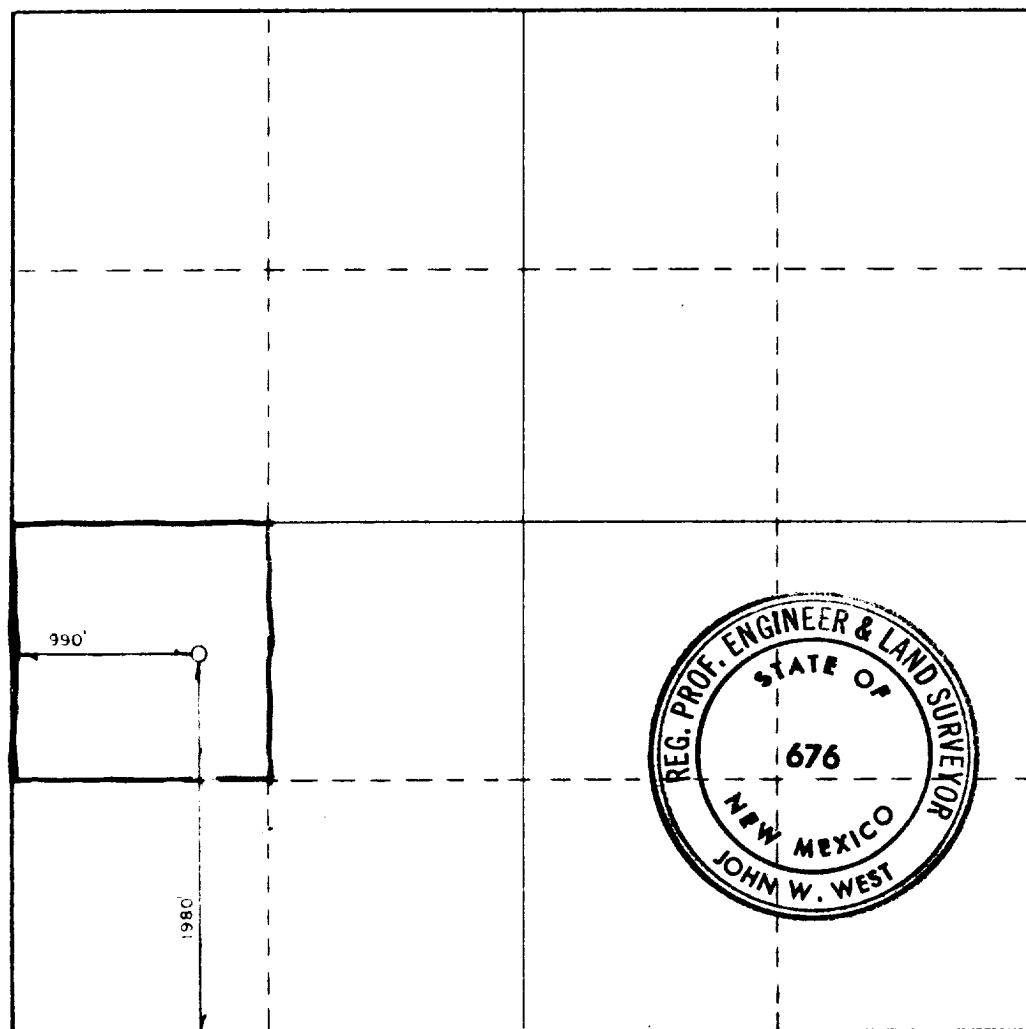
Operator <b>OGR OPERATING CO., INC.</b>			Lease <b>ROOSEVELT STATE "9" State</b>		Well No. <b>1</b>
Grid Letter <b>L</b>	Section <b>9</b>	Township <b>6 SOUTH</b>	Range <b>34 EAST</b>	County <b>ROOSEVELT</b>	
Actual Postage Location of Well:					
<b>1980</b> feet from the <b>SOUTH</b> line and		<b>990</b> feet from the <b>WEST</b> line			
Grid Level Elev. <b>4361.4</b>	Producing Formation <b>Fusselman</b>	Pool <b>Wildcat</b>		Dedicated Acreage: <b>40</b> Acres	

1. Outline the acreage dedicated to the subject well by colored pencil or hachure marks on the plat below.
2. If more than one lease is dedicated to the well, outline each and identify the ownership thereof (both as to working interest and royalty).
3. If more than one lease of different ownership is dedicated to the well, have the interests of all owners been consolidated by communitization, unitization, force-pooling, etc?

☐ Yes ☐ No If answer is "yes," type of consolidation NA

If answer is "no," list the owners and tract descriptions which have actually been consolidated. (Use reverse side of this form if necessary.) \_\_\_\_\_

No allowable will be assigned to the well until all interests have been consolidated (by communitization, unitization, forced-pooling, or otherwise) or until a non-standard unit, eliminating such interests, has been approved by the Commission.



CERTIFICATION

I hereby certify that the information contained herein is true and complete to the best of my knowledge and belief.

*Mickey Dobson*  
Name

Mickey Dobson

Position

Agent for OGR Operating Co.

Company

OGR Operating Co., Inc.

Date

10-26-83

I hereby certify that the well location shown on this plat was plotted from field notes of actual surveys made by me or under my supervision, and that the same is true and correct to the best of my knowledge and belief.

Date Surveyed

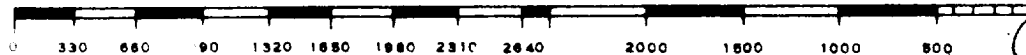
OCTOBER 21, 1983

Registered Professional Engineer and/or Land Surveyor

*John W. West*

Certificate No. JOHN W. WEST, 676

RONALD J. EIDSON, 3239



RECEIVED  
OCT 27 1983  
O.C.D.  
HOBBS OFFICE