

MEXICO OIL CONSERVATION COMMISSION
WELL LOCATION AND ACREAGE DEDICATION PLAT

Form O-112
Superseded O-11A
Effective 1-1-65

All distances must be from the outer boundaries of the Section

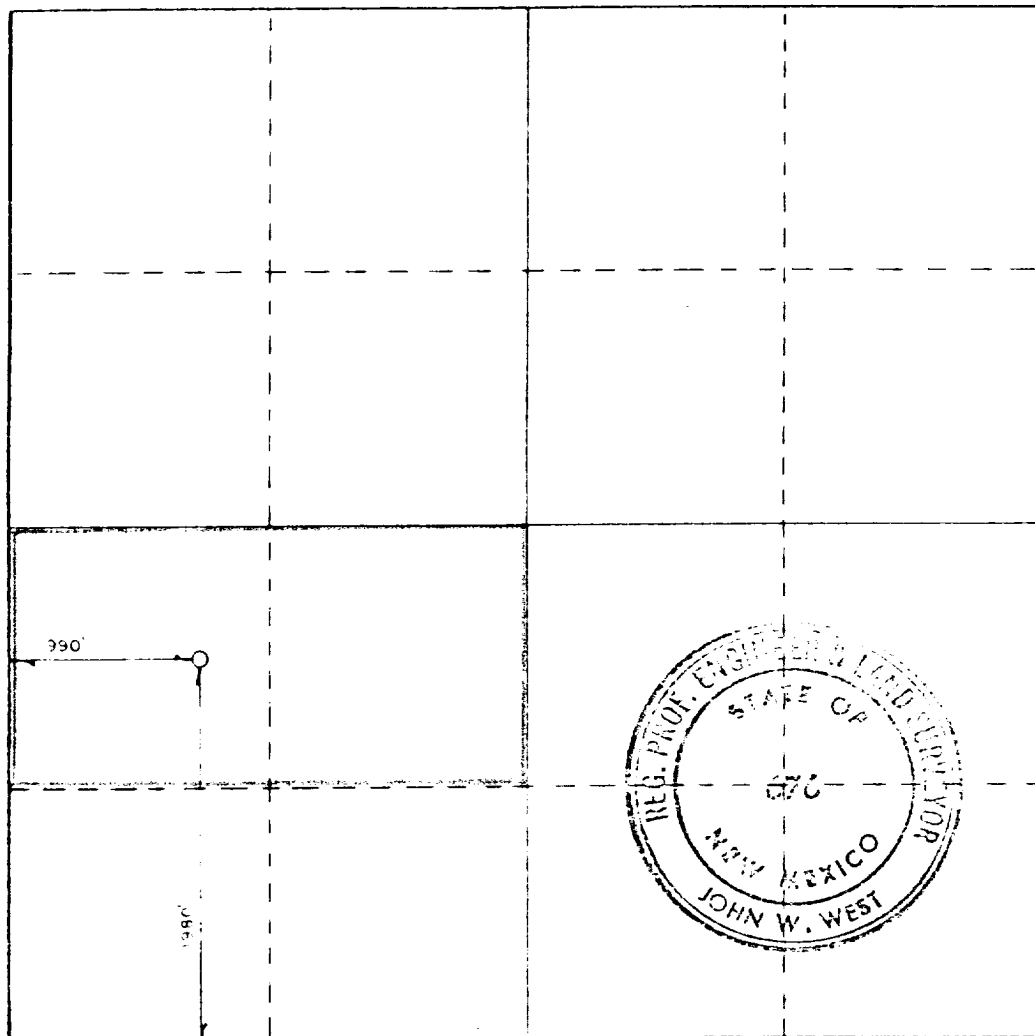
OGR OPERATING CO., INC.			Lease ROOSEVELT STATE "9" <i>State</i>		Acres 1
Section L	Section 9	Township 6 SOUTH	Range 34 EAST	County ROOSEVELT	
Well Location of Well:					
1980 feet from the SOUTH line and	990 feet from the WEST line				
4361.4	Fusselman	Pool <i>East Tanneyhill</i> Wildcat	Dedicated Acreage 80		

- 1 Outline the acreage dedicated to the subject well by colored pencil or hatchure marks on the plat below.
- 2 If more than one lease is dedicated to the well, outline each and identify the ownership thereof (both as to working interest and royalty).
- 3 If more than one lease of different ownership is dedicated to the well, have the interests of all owners been consolidated by communitization, unitization, force-pooling, etc?

☐ Yes ☐ No If answer is "yes!" type of consolidation NA

If answer is "no," list the owners and tract descriptions which have actually been consolidated. (Use reverse side of this form if necessary.)

No allowable will be assigned to the well until all interests have been consolidated (by communitization, unitization, forced-pooling, or otherwise) or until a non-standard unit, eliminating such interests, has been approved by the Commission.



CERTIFICATION

I hereby certify that the information contained herein is true and complete to the best of my knowledge and belief.

Sal J. Pagano

Name
Sal J. Pagano
Position
Production Manager

Company
OGR Operating Co., Inc.

Date
March 26, 1984

I hereby certify that the well location shown on this plat was plotted from field notes of actual surveys made by me or under my supervision, and that the same is true and correct to the best of my knowledge and belief.

Date Surveyed
OCTOBER 21, 1983

Registered Professional Engineer and/or Land Surveyor

John W. West

Certificate No. JOHN W. WEST

RONALD J. EIDSON



RECEIVED
APR 11 1984
O.C.D.
HOBBS OFFICE