

STATE OF NEW MEXICO
ENERGY AND MINERALS DEPARTMENT

CONSERVATION DIVISION

P. O. BOX 2088
SANTA FE, NEW MEXICO 87501

30-041-20692
Form C-101
Revised 10-1-78

NO. OF COPIES RECEIVED	
DISTRIBUTION	
SANTA FE	
FILE	
U.S.G.S.	
LAND OFFICE	
OPERATOR	

5A. Indicate Type of Lease
STATE ☐ FEE ☒

5. State Oil & Gas Lease No.

APPLICATION FOR PERMIT TO DRILL, DEEPEN, OR PLUG BACK

a. Type of Work

DRILL ☒

DEEPEN ☐

PLUG BACK ☐

b. Type of Well

OIL WELL ☒

GAS WELL ☐

OTHER ☐

SINGLE ZONE ☐

MULTIPLE ZONE ☐

2. Name of Operator

Yates Petroleum Corporation

3. Address of Operator

207 S. 4th, Artesia, New Mexico 88210

4. Location of Well

UNIT LETTER M LOCATED 330 FEET FROM THE South LINE

AND 990 FEET FROM THE West LINE OF SEC. 17 TWP. 7S RGE. 32E

7. Unit Agreement Name

8. Farm or Lease Name

Howard "XY"

9. Well No.

1

10. Field and Pool, or Wildcat

Undes. Tomahawk SA

17. County

Roosevelt

19. Proposed Depth

appr. 4250'

19A. Formation

San Andres

20. Rotary or C.T.

Rotary

21. Elevations (Show whether DF, HI, etc.)

4470.2' GL

21A. Kind & Status Plug. Bond

Blanket

21B. Drilling Contractor

not determined

22. Approx. Date Work will start

ASAP

23.

PROPOSED CASING AND CEMENT PROGRAM

SIZE OF HOLE	SIZE OF CASING	WEIGHT PER FOOT	SETTING DEPTH	SACKS OF CEMENT	EST. TOP
12 1/2"	8 5/8"	24# J-55	appr. 1700'	500 sx	circulated
7 7/8"	4 1/2"	9.5#	TD	300 sx	

We propose to drill and test the San Andres and intermediate formations. Approximately 1700' of surface casing will be set and cement circulated to shut off gravel and caving. If commercial, production casing will be run and cemented with adequate cover, perforated and stimulated as needed for production.

MUD PROGRAM: Native mud to 1700', Fresh water to TD.

BOP PROGRAM: BOP's will be installed at 1700' and tested daily.

4 ABOVE SPACE DESCRIBE PROPOSED PROGRAM; IF PROPOSAL IS TO DEEPEN OR PLUG BACK, GIVE DATA ON PRESENT PRODUCTIVE ZONE AND PROPOSED NEW PRODUCTIVE ZONE. GIVE BLOWOUT PREVENTER PROGRAM, IF ANY.

hereby certify that the information above is true and complete to the best of my knowledge and belief.

Signed [Signature] Title Regulatory Agent

Date 10-27-83

(This space for State Use)

ORIGINAL SIGNED BY JERRY SEXTON

APPROVED BY DISTRICT SUPERVISOR TITLE

DATE

CONDITIONS OF APPROVAL, IF ANY:

OCT 31 1983

APPROVAL VALID FOR 180 DAYS
PERMIT EXPIRES 5/1/84
UNLESS DRILLING UNDERWAY

f

RECEIVED
OCT 28 1983
C.C.O.
HOBBS OFFICE

**NEW MEXICO OIL CONSERVATION COMMISSION
WELL LOCATION AND ACREAGE DEDICATION PLAT**

Form C-102
Supersedes C-128
Effective 1-1-65

All distances must be from the outer boundaries of the Section.

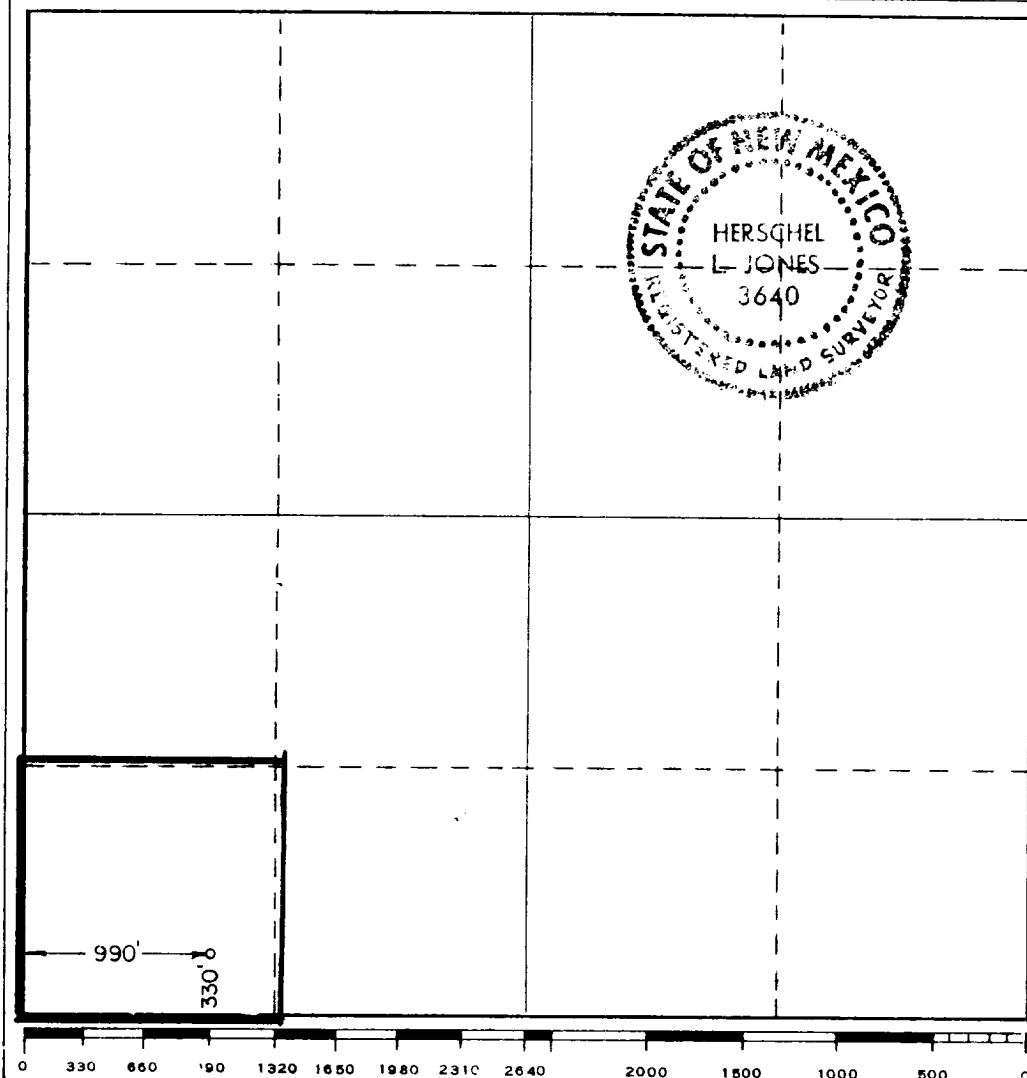
Operator YATES PETROLEUM CORPORATION			Lease HOWARD "XY"		Well No. 1
Unit Letter M	Section 17	Township 7 South	Range 32 East	County Roosevelt	
Actual Footage Location of Well: 990 feet from the West line and 330 feet from the South line					
Ground Level Elev. 4470.2	Producing Formation San Andres		Pool Undes. Tomahawk SA	Dedicated Acreage: 40 Acres	

1. Outline the acreage dedicated to the subject well by colored pencil or hatchure marks on the plat below.
2. If more than one lease is dedicated to the well, outline each and identify the ownership thereof (both as to working interest and royalty).
3. If more than one lease of different ownership is dedicated to the well, have the interests of all owners been consolidated by communitization, unitization, force-pooling, etc?

☐ Yes ☐ No If answer is "yes," type of consolidation _____

If answer is "no," list the owners and tract descriptions which have actually been consolidated. (Use reverse side of this form if necessary.) _____

No allowable will be assigned to the well until all interests have been consolidated (by communitization, unitization, forced-pooling, or otherwise) or until a non-standard unit, eliminating such interests, has been approved by the Commission.



CERTIFICATION

I hereby certify that the information contained herein is true and complete to the best of my knowledge and belief.

Gliserio Rodriguez
Name
Gliserio Rodriguez

Position
Regulatory Agent

Company
Yates Petroleum Corp.

Date
10/27/83

I hereby certify that the well location shown on this plat was plotted from field notes of actual surveys made by me or under my supervision, and that the same is true and correct to the best of my knowledge and belief.

Date Surveyed
10/24/83

Registered Professional Engineer and/or Land Surveyor

Herschel L. Jones
Certificate No.
3640

EXHIBIT B

BOP DIAGRAM

RATED 3000[#]

