

NEW MEXICO OIL CONSERVATION COMMISSIC
WELL LOCATION AND ACREAGE DEDICATION PLAT

Form C-128
Superseded C-128
Effective 1-1-65

All distances must be from the outer boundaries of the Section

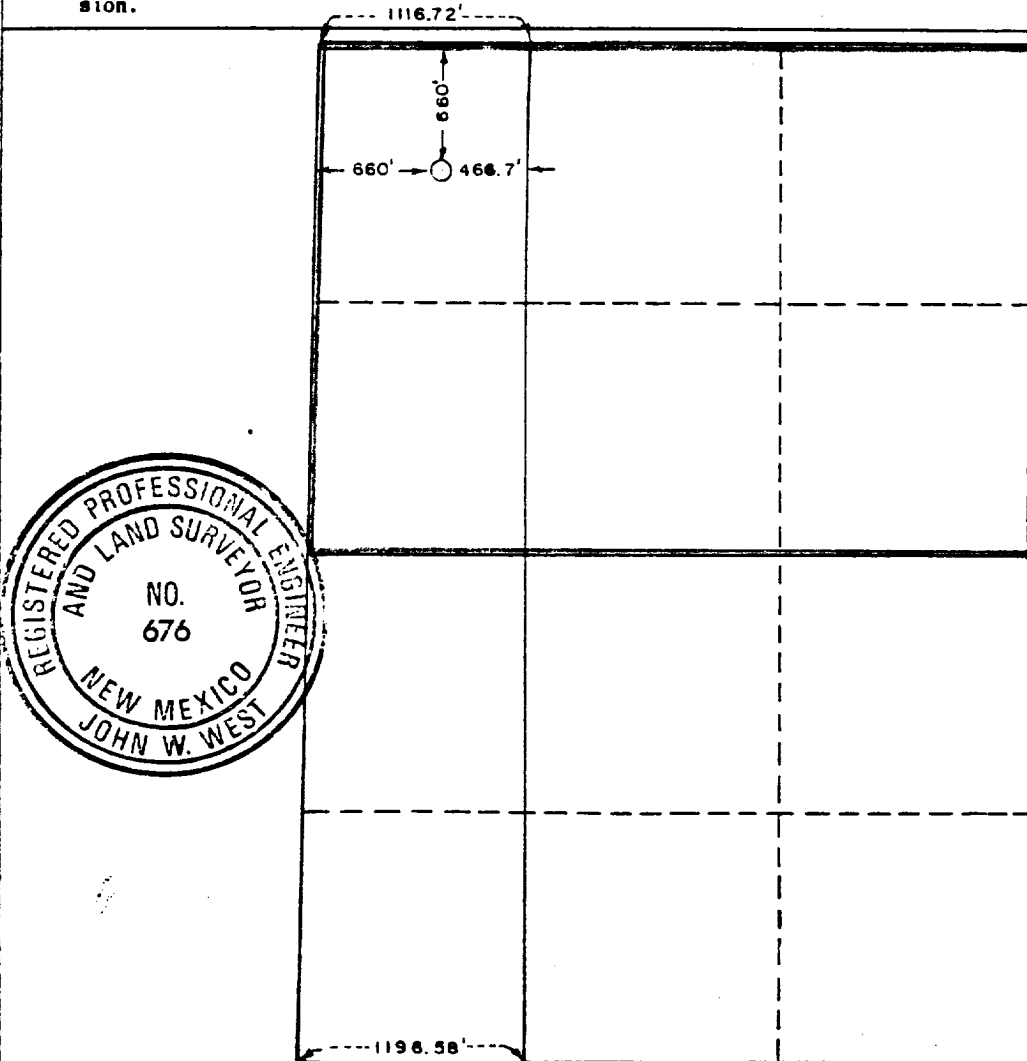
Operator ENERGY RESERVES GROUP, INC.		Lease Lambuth		Well No. 1
Section C	Section 18	Township 6 SOUTH	Range 34 EAST	County ROOSEVELT
Actual Footage Location of Well: 660 feet from the NORTH line and 660 feet from the WEST line				
Ground Level Elev. 4372.7	Producing Formation Cisco	Pool S. Peterson Penn. Assoc.	Dedicated Acreage: 228.89	

1. Outline the acreage dedicated to the subject well by colored pencil or hatchure marks on the plat below.
2. If more than one lease is dedicated to the well, outline each and identify the ownership thereof (both as to working interest and royalty).
3. If more than one lease of different ownership is dedicated to the well, have the interests of all owners been consolidated by communitization, unitization, force-pooling, etc?

☐ Yes ☐ No If answer is "yes," type of consolidation _____

If answer is "no," list the owners and tract descriptions which have actually been consolidated. (Use reverse side of this form if necessary.) _____

No allowable will be assigned to the well until all interests have been consolidated (by communitization, unitization, forced-pooling, or otherwise) or until a non-standard unit, eliminating such interests, has been approved by the Commission.



CERTIFICATION

I hereby certify that the information contained herein is true and complete to the best of my knowledge and belief.

RLR

Name
R. L. Robertson
Position
Prod. Engineer III
Company
Energy Reserves Group, Inc.
Date
2/6/84

I hereby certify that the well location shown on this plat was plotted from field notes of actual surveys made by me or under my supervision, and that the same is true and correct to the best of my knowledge and belief.

Date Surveyed
DEC. 5, 1983
Registered Professional Engineer and/or Land Surveyor
John W. West
Certificate No. **JOHN W. WEST 676**
PATRICK A. ROMERO 6863
Ronald J. Eidson 3239