

DISTRIBUTION		
SANTA FE		
FILE		
U.S.G.S.		
LAND OFFICE		
OPERATOR		

MEXICO OIL CONSERVATION COMMISS

Form C-101
Revised 1-1-855A. Indicate Type of Lease
STATE ☐ FEE ☒

5. State Oil & Gas Lease No.

APPLICATION FOR PERMIT TO DRILL, DEEPEN, OR PLUG BACK

1a. Type of Work

b. Type of Well
OIL WELL ☒ GAS WELL ☐ OTHER ☐
DRILL ☒ DEEPEN ☐ PLUG BACK ☐
SINGLE ZONE ☐ MULTIPLE ZONE ☐

2. Name of Operator

Coastal Oil & Gas Corp.

3. Address of Operator

P. O. Box 235, Midland, Texas 79702

4. Location of Well

UNIT LETTER P LOCATED 330 FEET FROM THE south LINEAND 330 FEET FROM THE east LINE OF SEC. 3 TWP. T-6-S RGE. R-32-E WMPM

7. Unit Agreement Name

8. Farm or Lease Name

A. Ellison

9. Well No.

1

10. Field and Pool, or Wildcat

Wildcat

12. County

Roosevelt

11. Elevations (Show whether DF, RT, etc.)

4,449.4

21A. Kind & Status Plug. Bond

Blanket

19. Proposed Depth

7800'

19A. Formation

Siluro Devonian

20. Rotary or C.T.

Rotary

21B. Drilling Contractor

Undesignated

22. Approx. Date Work will start

5-15-84

23.

PROPOSED CASING AND CEMENT PROGRAM

SIZE OF HOLE	SIZE OF CASING	WEIGHT PER FOOT	SETTING DEPTH	SACKS OF CEMENT	EST. TOP
17 1/2"	13 3/8"	48#	350'	400	Surface
11"	8 5/8"	24# & 28#	3400'	1050	Surface
7 7/8"	5 1/2"	15.5# & 17#	7800'	625	5000'

Cementing Program:

- Surface casing: 400 sacks of class "c" cement containing 2% CaCl_2 : This is 100% excess to circulate to surface.
- Intermediate casing: Lead with 750 sacks of lightweight cement containing 15#/sk salt, 1/4 #/sk. flocele (yield = $2.08 \text{ ft}^3/\text{sk}$) followed by 300 sacks Class "C" containing 2% CaCl_2 (yield = $1.32 \text{ ft}^3/\text{sk}$). This is 1956 ft^3 of cement, 125% excess to circulate to surface.
- Production Casing: 625 sacks of class "H" (yield = $1.18 \text{ ft}^3/\text{sk}$). This is 50% excess to fill to 5,000'.

Mud Program:

- Surface Hole: Fresh water base/native mud.
- Intermediate Hole: Brine base/native mud.
- Production Hole: Fresh water base mud with starch to control fluid loss.

A. PERMIT VALID FOR 180 DAYS
PERMIT EXPIRES 11/4/84
UNLESS DRILLING UNDERWAY

IN ABOVE SPACE DESCRIBE PROPOSED PROGRAM: IF PROPOSAL IS TO DEEPEN OR PLUG BACK, GIVE DATA ON PRESENT PRODUCTIVE ZONE AND PROPOSED NEW PRODUCTIVE ZONE. GIVE BLOWOUT PREVENTER PROGRAM, IF ANY.

I hereby certify that the information above is true and complete to the best of my knowledge and belief.

Signed Eddie W. Seay Title Operations Analyst Date 4-25-84

(This space for State Use)

Eddie W. Seay

APPROVED BY Oil & Gas Inspector

TITLE

DATE

MAY 4 1984

CONDITIONS OF APPROVAL, IF ANY:

RECEIVED
APR 27 1984
O.C.D.
HOBBS OFFICE

RECEIVED
MAY 3 1984
O.C.D.
HOBBS OFFICE

**NEW MEXICO OIL CONSERVATION COMMISSION
WELL LOCATION AND ACREAGE DEDICATION PLAT**

Form C-102
Supersedes C-128
Effective 1-1-65

All distances must be from the outer boundaries of the Section

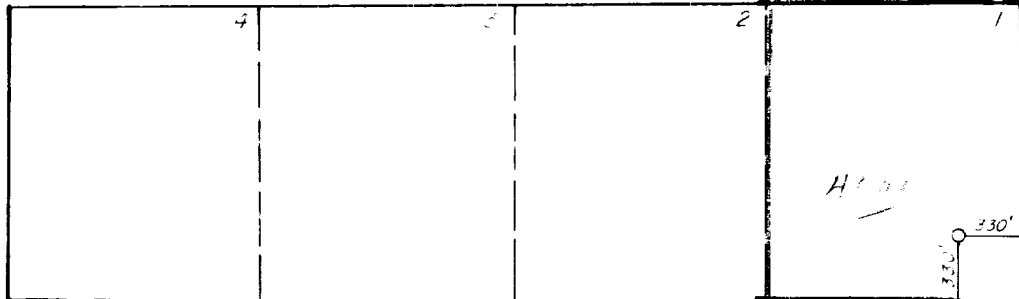
Operator COASTAL OIL & GAS CORP.			Lease A. ELLISON		Well No. 1
Tract Letter P	Section 5	Township 6 S	Range 32 EAST	County ROOSEVELT	
Actual Footage Location of Well: <div style="display: flex; justify-content: space-between;"> 550 feet from the WEST line and 330 feet from the EAST line </div>					
Ground Level Elev. 429.1	Producing Formation Siluro Devonian		Pool Wildcat		Dedicated Acreage 40 46.60 Acres

1. Outline the acreage dedicated to the subject well by colored pencil or hachure marks on the plat below.
2. If more than one lease is dedicated to the well, outline each and identify the ownership thereof (both as to working interest and royalty).
3. If more than one lease of different ownership is dedicated to the well, have the interests of all owners been consolidated by communitization, unitization, force-pooling, etc?

☐ Yes ☒ No If answer is "yes," type of consolidation _____

If answer is "no," list the owners and tract descriptions which have actually been consolidated. (Use reverse side of this form if necessary.) _____

No allowable will be assigned to the well until all interests have been consolidated (by communitization, unitization, forced-pooling, or otherwise) or until a non-standard unit, eliminating such interests, has been approved by the Commission.



CERTIFICATION

I hereby certify that the information contained herein is true and complete to the best of my knowledge and belief.

Sue Vanderford

Sue Vanderford
Position
Operations Analyst

Company
Coastal Oil & Gas Corp.

Date
4-25-84

I hereby certify that the well location shown on this plat was plotted from field notes of actual surveys made by me or under my supervision, and that the same is true and correct to the best of my knowledge and belief.

Date Surveyed
APRIL 18, 1984

Registered Professional Engineer and/or Land Surveyor

John W. West

Certificate No **JOHN W. WEST 676**

Ronald J. Eidson 3239



RECEIVED
APR 27 1984
O.C.D.
HOBBS OFFICE

RECEIVED
MAY 3 1984
O.C.D.
HOBBS OFFICE

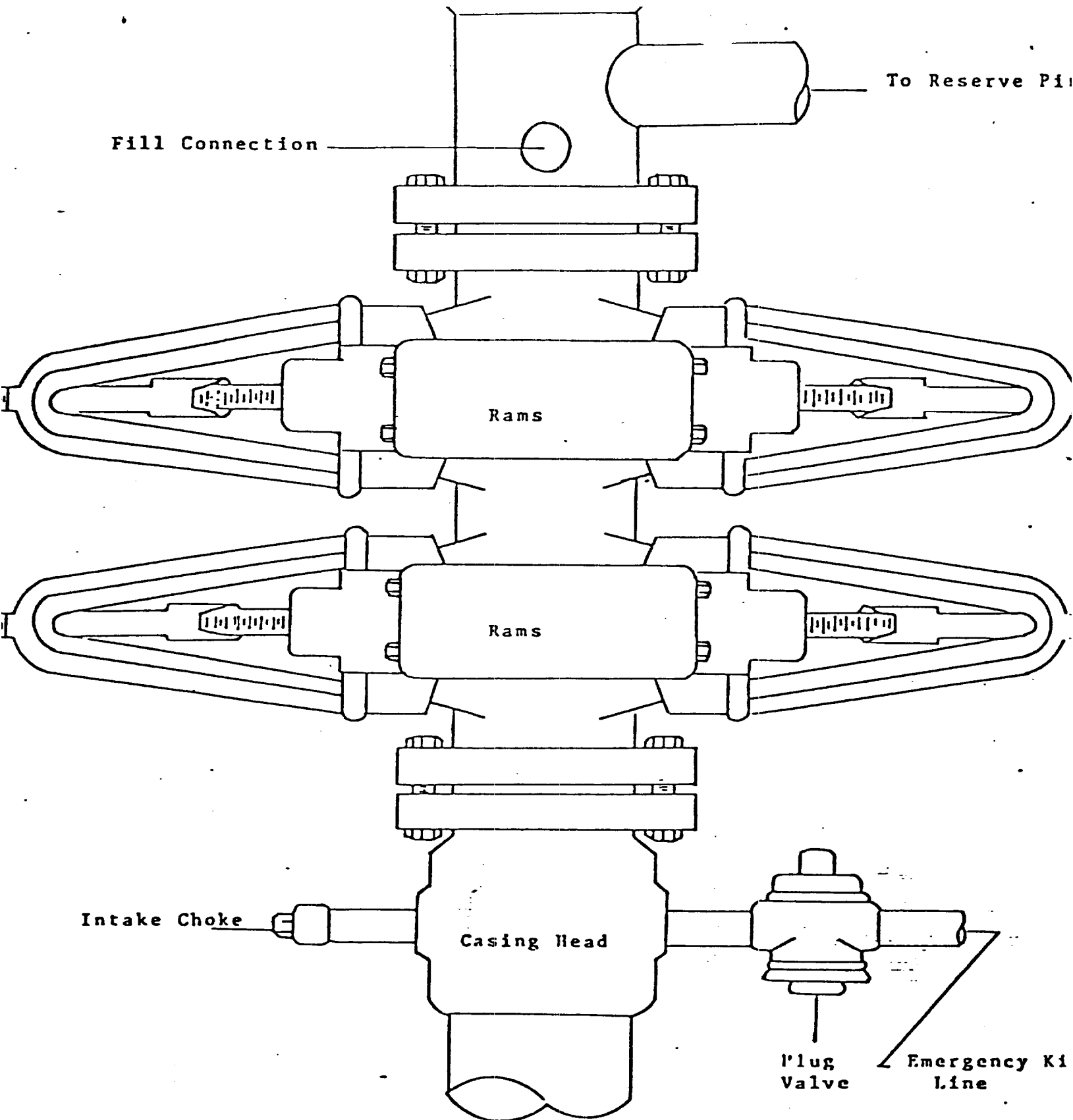


EXHIBIT "D"
3000 PSI Working Pressure
Blowout Preventer Stack

RECEIVED MAY 3 1984
O.C.D. HOBBS OFFICE
APR 27 1984
O.C.D. HOBBS OFFICE