

All distances must be from the outer boundaries of the Section.

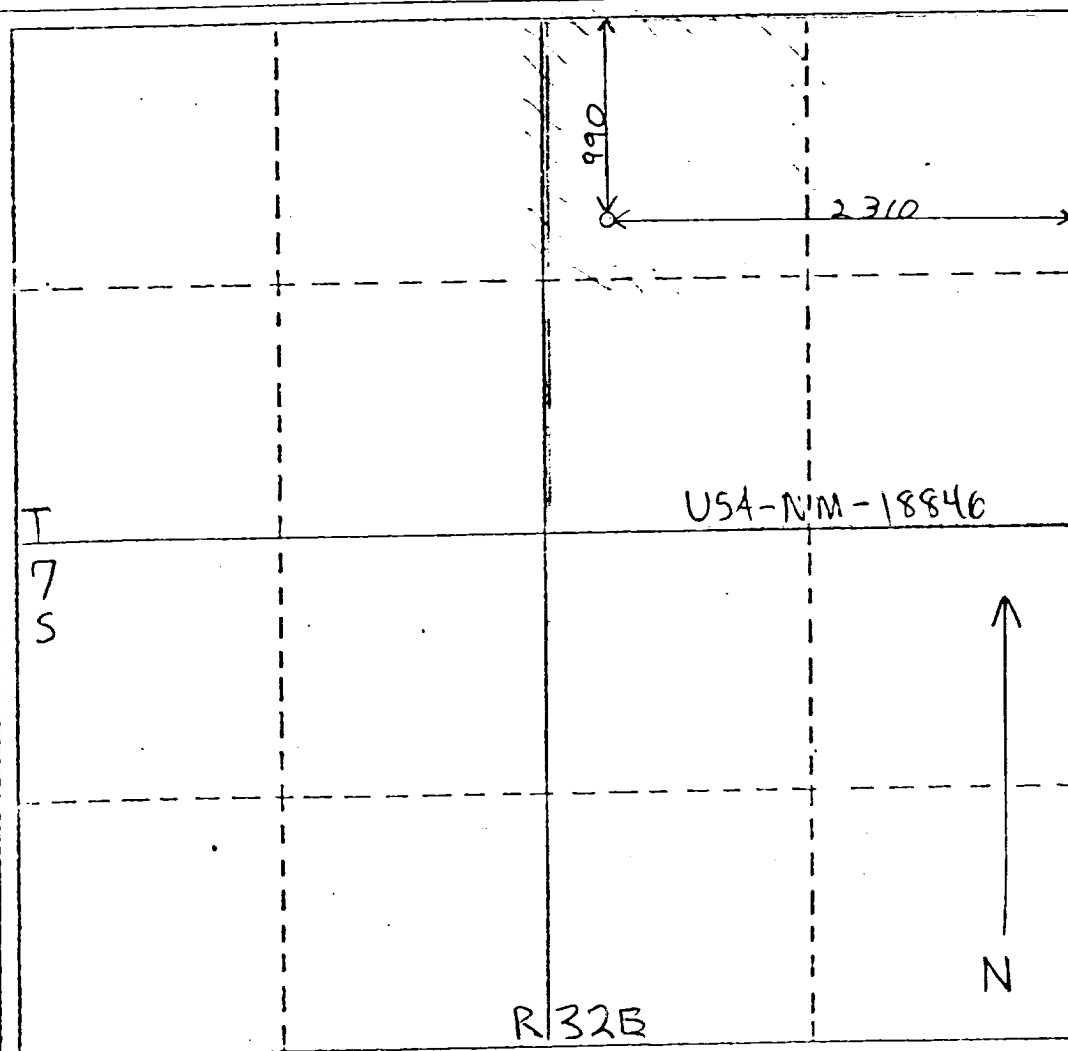
Operator <b>Celeste C. Grynberg</b>			Lease <b>Celsius Federal</b>			Well No. <b>1</b>		
Unit Letter <b>B</b>	Section <b>20</b>	Township <b>7 South</b>	Range <b>32 East</b>	County <b>Roosevelt</b>				
Actual Footage Location of Well:								
990 feet from the North			line and 2310			feet from the East		
Ground Level Elev. <b>4468</b>	Producing Formation <b>San Andres</b>		Pool <b>Tomahawk</b>			Dedicated Acres <b>40</b> Acres		

- Outline the acreage dedicated to the subject well by colored pencil or hatchure marks on the plat below.
- If more than one lease is dedicated to the well, outline each and identify the ownership thereof (both as to working interest and royalty).
- If more than one lease of different ownership is dedicated to the well, have the interests of all owners been consolidated by communitization, unitization, force-pooling, etc?

☐ Yes ☐ No If answer is "yes," type of consolidation \_\_\_\_\_

If answer is "no," list the owners and tract descriptions which have actually been consolidated. (Use reverse side of this form if necessary.) \_\_\_\_\_

No allowable will be assigned to the well until all interests have been consolidated (by communitization, unitization, forced-pooling, or otherwise) or until a non-standard unit, eliminating such interests, has been approved by the Division.



# CERTIFICATION

I hereby certify that the information contained herein is true and complete to the best of my knowledge and belief.

Name

Drilling & Production Coordinator

Position

Grynberg Petroleum Company

Company

June 8, 1984

Date

I hereby certify that the well location shown on this plat was plotted from field notes of actual surveys made by me or under my supervision, and that the same is true and correct to the best of my knowledge and belief.

June 4, 1984. P. R. Patton

Date Surveyed

P. R. Patton

Registered Professional Engineer and/or Land Surveyor

8112

Certificate No.