

UNITED STATES  
DEPARTMENT OF THE INTERIOR  
BUREAU OF LAND MANAGEMENT

SUBMIT IN TRIP DATE  
N. M. OIL CONS. MISSION  
P. O. BOX 1380  
ROBBS, NEW MEXICO

30-041-00773  
Form approved.  
Budget Bureau No. 1004-0136  
Expires August 31, 1985

APPLICATION FOR PERMIT TO DRILL, DEEPEN, OR PLUG BACK

1a. TYPE OF WORK

DRILL ☒

DEEPEN ☐

PLUG BACK ☐

b. TYPE OF WELL

OIL  
WELL ☒

GAS  
WELL ☐

OTHER

SINGLE  
ZONE ☒

MULTIPLE  
ZONE ☐

2. NAME OF OPERATOR

L & B Oil Company, Inc.

3. ADDRESS OF OPERATOR

9800 Centre Parkway, Ste. 900 Houston, Texas 77036

4. LOCATION OF WELL (Report location clearly and in accordance with any State requirements.)\*

At surface

1650' FSL & 660' FEL of Sec. 24, T-5-S, R-31-E

At proposed prod. zone

Fusselman

14. DISTANCE IN MILES AND DIRECTION FROM NEAREST TOWN OR POST OFFICE\*

7 miles South of Elida.

10. DISTANCE FROM PROPOSED\*

LOCATION TO NEAREST  
PROPERTY OR LEASE LINE, FT.  
(Also to nearest drlg. unit line, if any)

660'

16. NO. OF ACRES IN LEASE

320\*

17. NO. OF ACRES ASSIGNED  
TO THIS WELL

40

18. DISTANCE FROM PROPOSED LOCATION\*

TO NEAREST WELL, DRILLING, COMPLETED,  
OR APPLIED FOR, ON THIS LEASE, FT.

None

19. PROPOSED DEPTH

8100'

20. ROTARY OR CABLE TOOLS

Rotary

21. ELEVATIONS (Show whether DF, RT, GR, etc.)

4404' GR

22. APPROX. DATE WORK WILL START\*

12-15-84

23.

PROPOSED CASING AND CEMENTING PROGRAM

SIZE OF HOLE	SIZE OF CASING	WEIGHT PER FOOT	SETTING DEPTH	QUANTITY OF CEMENT
17-1/2	13-3/8"	48#	400'	420 sx.
12-1/4	9-5/8"	36#	3400'	1700 sx.
8-3/4	5-1/2"	15.5 & 17#	8100'	730 sx.

Cement on production string may be modified as necessary due to shows and problems encountered during drilling.

Blowout preventers - 10" x 900 series, 3000 psi WP, with manifold and closing unit.

\* Original lease contained 560 acres - L & B has acquired only 320 acres of the original 560.

MUD PROGRAM

0-400'

Spud mud, FW, Gel

400-2000'

Brine & Native mud, wt. 9.9-10.2 ppg. Vis 32-34, No WL. NOV 2 1984

2000-6200'

Saturated Brine Water, wt. 10, Vis. 29-30, No WL.

6200-8100'

Salt mud, wt. 9.5-10.1, Vis 34-40, WL 10-12 cc.

IN ABOVE SPACE DESCRIBE PROPOSED PROGRAM: If proposal is to deepen or plug back, give data on present productive zone and proposed new productive zone. If proposal is to drill or deepen directionally, give pertinent data on subsurface locations and measured and true vertical depths. Give blowout preventer program, if any.

SIGNED Steve Manley

TITLE Engineer

DATE 11-16-84

(This space for Federal or State office use)

PERMIT NO.

APPROVAL DATE

APPROVED BY

S/Phil Kirk

TITLE

Area Manager

DATE

11-27-84

CONDITIONS OF APPROVAL, IF ANY:

\*See Instructions On Reverse Side

HOCHTIEF

NOV 28 1984

RECEIVED

## OIL CONSERVATION DIVISION

STATE OF NEW MEXICO  
ENERGY AND MINERALS DEPARTMENTP. O. BOX 2088  
SANTA FE, NEW MEXICO 87501Form C-102  
Revised 10-1-78

All distances must be from the outer boundaries of the Section.

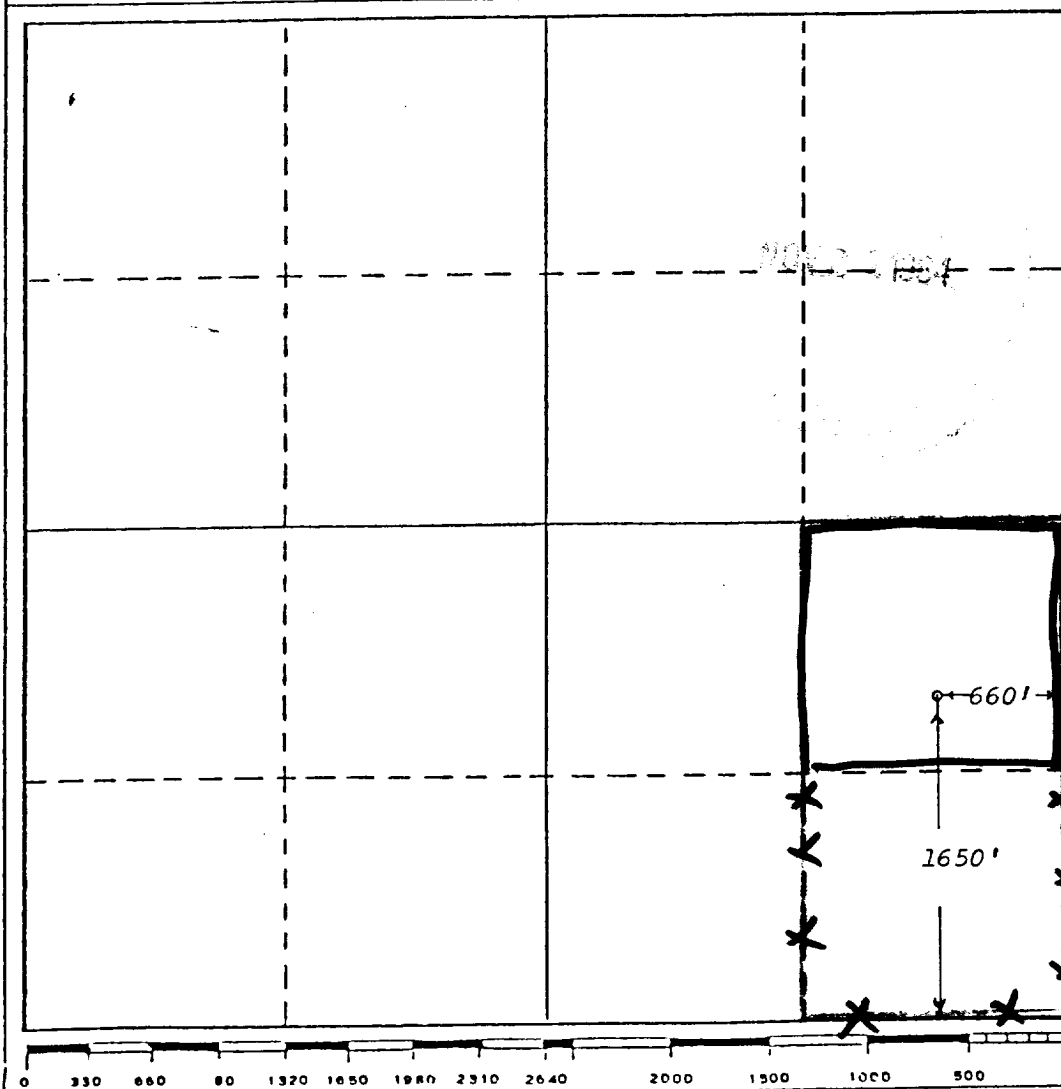
Operator <b>L &amp; B OIL COMPANY</b>		Lease <b>FEDERAL 24</b>		Well No. <b>1</b>
Unit Letter	Section <b>24</b>	Township <b>T-5-S</b>	Range <b>R-31-E</b>	County <b>ROOSEVELT</b>
Actual Footage Location of Well: <b>1650</b> feet from the <b>South</b> line and <b>660</b> feet from the <b>East</b> line				
Ground Level Elev. <b>4404'</b>	Producing Formation <b>Fusselman</b>		Pool <b>Wildcat</b>	Dedicated Acreage: <b>40</b> Acres

1. Outline the acreage dedicated to the subject well by colored pencil or hatchure marks on the plat below.
2. If more than one lease is dedicated to the well, outline each and identify the ownership thereof (both as to working interest and royalty).
3. If more than one lease of different ownership is dedicated to the well, have the interests of all owners been consolidated by communitization, unitization, force-pooling, etc?

☐ Yes ☐ No If answer is "yes," type of consolidation \_\_\_\_\_

If answer is "no," list the owners and tract descriptions which have actually been consolidated. (Use reverse side of this form if necessary.) \_\_\_\_\_

No allowable will be assigned to the well until all interests have been consolidated (by communitization, unitization, forced-pooling, or otherwise) or until a non-standard unit, eliminating such interests, has been approved by the Division.



## CERTIFICATION

I hereby certify that the information contained herein is true and complete to the best of my knowledge and belief.

Name

Engineer

Position

L &amp; B Oil Company, Inc.

Company

11-16-84

Date

I hereby certify that the well location shown on this plat was plotted from field notes of actual surveys made by me or under my supervision, and that the same is true and correct to the best of my knowledge and belief.

Date Surveyed

Nov. 15, 1984

Registered Professional Engineer  
and/or Land Surveyor

Certificate No.

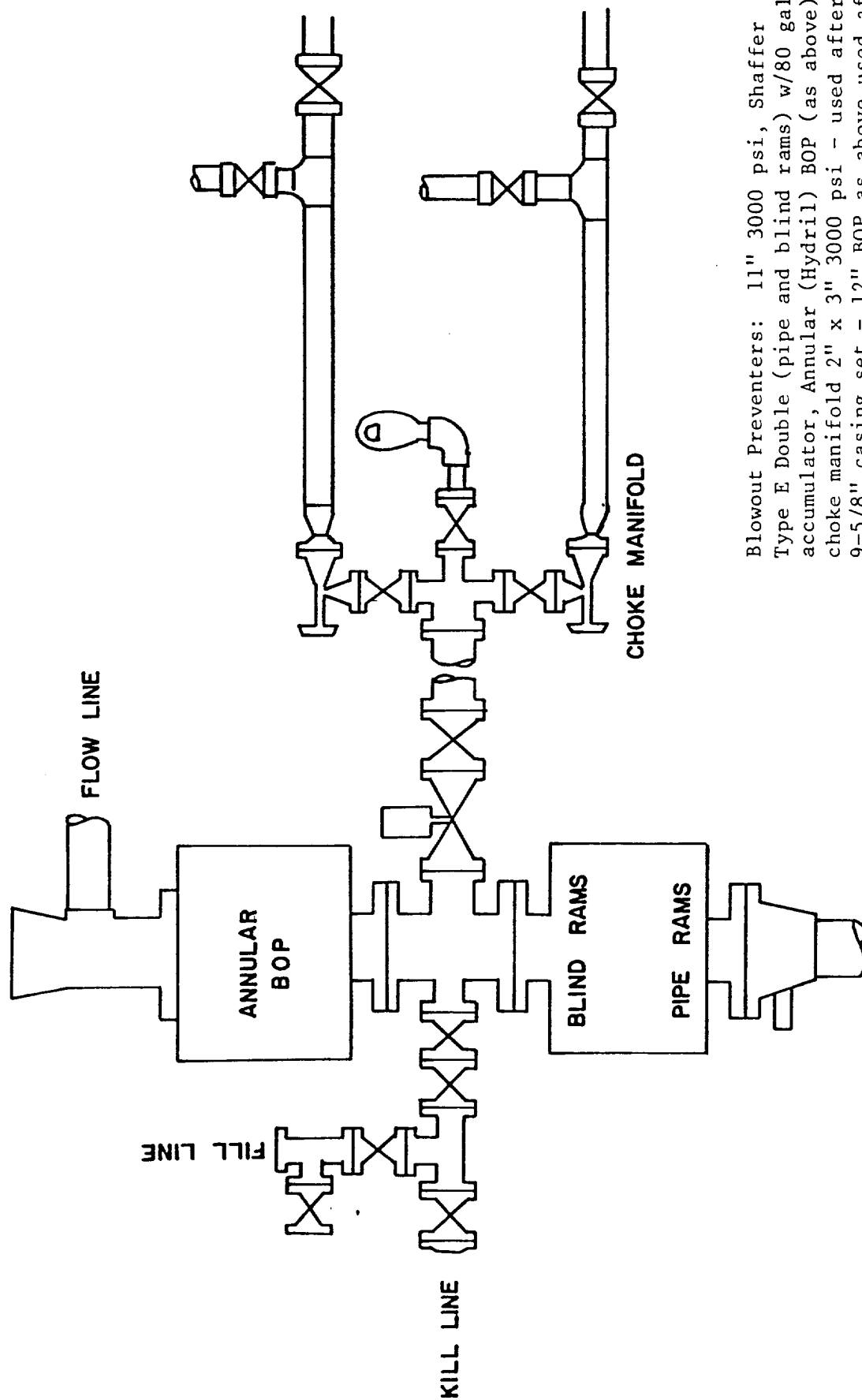
6689

CONFIDENTIAL  
10/10

10/10

CONFIDENTIAL

# BLOWOUT PREVENTER CONFIGURATION



Blowout Preventers: 11" 3000 psi, Shaffer  
 Type E Double (pipe and blind rams) w/80 gallon accumulator, Annular (Hydril) BOP (as above)  
 choke manifold 2" x 3" 3000 psi - used after 9-5/8" casing set - 12" BOP as above used after 13-3/8" casing set.